

REV	DESCRIPTION	DATE
A	NEW ISSUE	09-09-2021
B	ITEM 1 PN CHANGED, NOTE 17 REMOVED, TCAS COMPONENTS DESCRIPTION AND CB LABEL CHANGED FROM TAS TO TCAS. ADDED -013 NO DME INSTALLED CONFIG.	17-12-2022


\_\_\_\_\_ NEW WIRE / UNIT  
 - - - - - EXISTING WIRE / UNIT

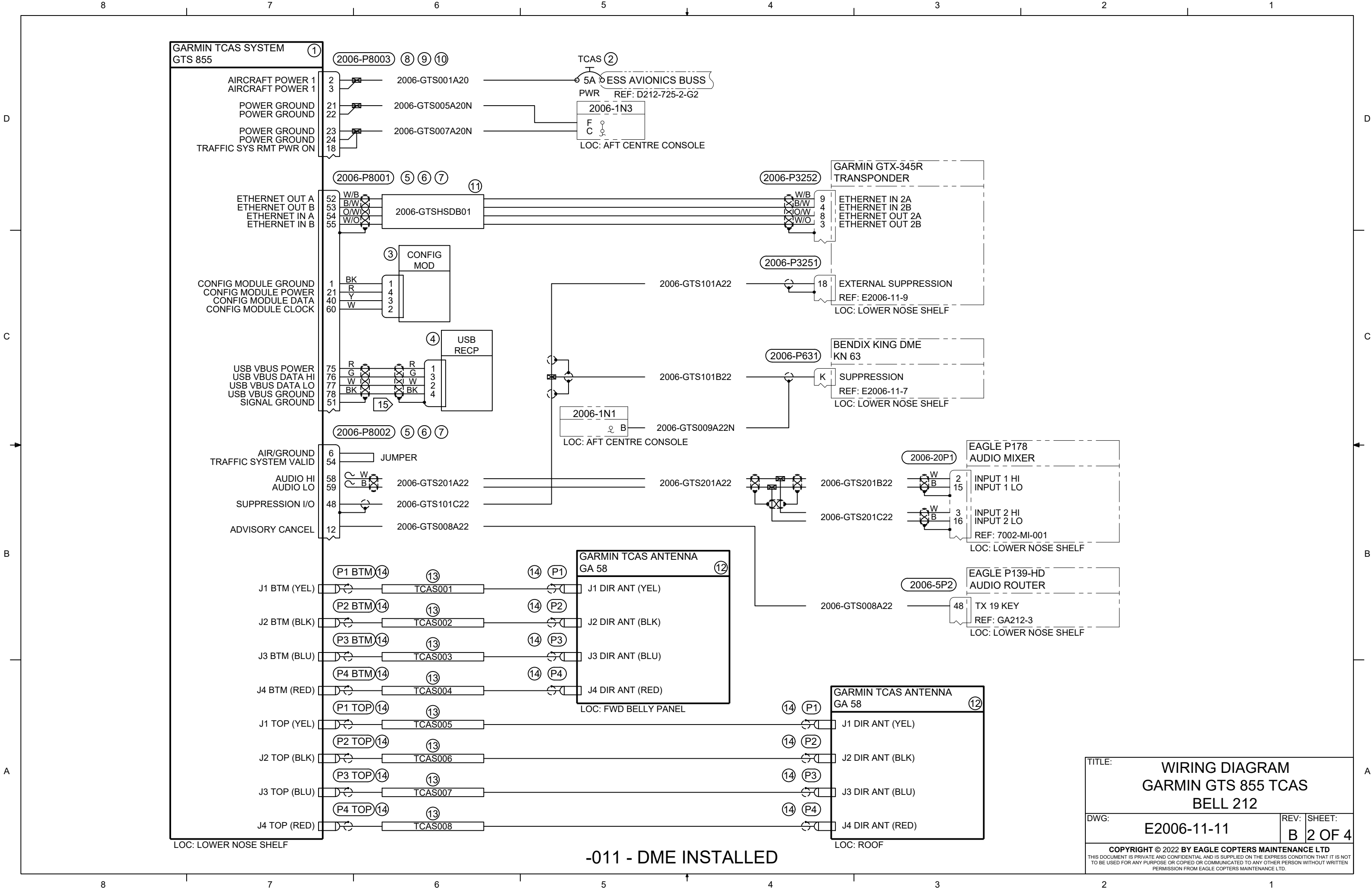
**NOTES:**

- PERFORM ALL WORK IN ACCORDANCE WITH BELL HELICOPTER STANDARD PRACTICES MANUAL BHT-ELEC-SPM.
- ALL NEW UNSHIELDED WIRE USE M22759/41-(XX)-9 OR EQUIVALENT TYPE WIRE. (M22759/41-(XX)-9 IS NOT INTENDED TO BE USED IN SOLDER APPLICATIONS, SOLDERABILITY CAN BE ACHIEVED WITH THE PROPER SOLDER. USE CRIMP SPLICES FOR REPAIR). ALL WIRES 22 AWG UNLESS OTHERWISE SPECIFIED BY WIRE CODE. ALL JUMPERS TO BE LESS THAN 6 INCHES.
- ALL NEW SHIELDED WIRE USE M27500-(XX)SM(X)N23 OR EQUIVALENT TYPE WIRE. (M27500-(XX)SM(X)N23 IS NOT INTENDED TO BE USED IN SOLDER APPLICATIONS, SOLDERABILITY CAN BE ACHIEVED WITH THE PROPER SOLDER. USE CRIMP SPLICES FOR REPAIR). SOLDER SLEEVES SHALL USE SN96 SOLDER, USE P/N S200-X-00 OR EQUIVALENT.
- ALL SHIELD TERMINATIONS SHALL BE INSTALLED PER MIL-S-83519 OR EQUIVALENT. SHIELD TERMINATIONS SHOWN AS "DAISY-CHAINED" ARE FOR DRAWING CLARITY ONLY. INDIVIDUAL SHIELD EXTENSIONS SHALL BE SPLICED AT A COMMON TIE POINT TO THE TERMINATING WIRES. THE BACK SHELL OR AIRFRAME GROUND MAY BE USED.
- ALL AIRFRAME GROUNDS SHALL BE VIA AMP LUG OR GROUNDING BLOCK AND PROVIDE SEPARATE GROUND STUD LOCATIONS FOR DC POWER GROUNDS, AC POWER GROUNDS, CHASSIS GROUNDS, SIGNAL GROUNDS AND SHIELD GROUNDS.
- ALL EQUIPMENT BONDING TO ADJACENT AIRFRAME STRUCTURE TO BE 0.003 OHM OR LESS. ALL ELECTRICAL GROUNDING AND BONDING TO BE INSTALLED IN ACCORDANCE WITH THE LATEST REVISION OF BHT-ELEC-SPM CHAPTER 8.
- ALL TERMINALS TO BE INSTALLED IN ACCORDANCE WITH THE LATEST REVISION OF BHT-ELEC-SPM CHAPTER 4 PARAGRAPH 4-9.
- ALL CONNECTORS TO BE INSTALLED IN ACCORDANCE WITH THE LATEST REVISION OF BHT-ELEC-SPM CHAPTER 5. ENSURE ALL UNUSED CONNECTOR CONTACTS ARE FILLED WITH SPARE PINS/SOCKETS OR PLASTIC GROMMET SEALING PLUGS. ENSURE ALL BULKHEAD MOUNTED CONNECTORS ARE PROPERLY BONDED TO AIRFRAME.
- ENSURE ALL SWITCHES, CIRCUIT BREAKERS, AND REMOTE MOUNTED BOXES ARE LABELED WITH A CONSISTENT SIZE, FONT, COLOR, BACKGROUND AND ARE ILLUMINATED CONSISTENT AS EXISTING LABELS.
- ROUTE ALL WIRES AND CABLES WITH EXISTING WIRE ROUTES WHERE POSSIBLE AND CLAMP IN ACCORDANCE WITH THE LATEST REVISION OF BHT-ELEC-SPM CHAPTER 6. WIRES MUST BE ROUTED WITH A MINIMUM OF 6 INCHES OF SEPARATION FROM OXYGEN AND FLUID LINES (MIN 2 INCHES IF WIRES IN CONDUIT).
- INSTALL SYSTEM IN ACCORDANCE WITH THE LATEST REVISION OF THE MANUFACTURERS INSTALLATION MANUAL.
- LOWERCASE LETTER CONNECTOR PIN DESIGNATORS ARE SHOWN AS UNDERLINED UPPER CASE LETTERS.
- AS THE DRAIN WIRE IS UN-INSULATED, A TEFLON SLEEVE (18 AWG OR HIGHER) IS REQUIRED OVER THE EXPOSED AREA BACK TO THE OUTER INSULATION OF THE CABLE. REFERENCE GARMIN GTS 855 INSTALLATION MANUAL, PN: 190-00587-50 REV. M, APPENDIX B, PAGE B-6, NOTE 5.
- EACH SET OF COAX CABLE MUST BE A MATCHING SET WITH EACH INDIVIDUAL CABLE THE SAME LENGTH (WITHIN +/- 6 INCHES) AND THE LENGTH BETWEEN LRU AND ANTENNA NOT TO EXCEED 35 FT.
- INCLUDED IN KIT PN: 011-01360-01
- POWER WIRES NOT TO EXCEED 20 FT FROM A 5A CIRCUIT BREAKER.

16	--	17	190508	CONNECTOR, STRAIGHT, TNC MALE	PIC
AR (200)	--	16	S67163	CABLE, COAX	PIC
AR	--	15	E40424	CABLE, ETHERNET	PIC
--	16	14	190108	CONNECTOR, STRAIGHT, TNC MALE	PIC
--	AR (200)	13	S44193	CABLE, COAX	PIC
REF	REF	12	011-01346-02	GA 58 DIRECTIONAL ANTENNA	GARMIN
--	AR	11	392404	CABLE, ETHERNET	CARLISLE
15	1	10	011-01855-03	BACKSHELL	GARMIN
15	1	9	330-00853-37	CONNECTOR, PLUG (J8003)	GARMIN
15	AR (9)	AR (9)	8	336-00022-00	CONTACT, SOCKET ALT P/N: M39029/63-368
15	2	7	011-01855-04	BACKSHELL	GARMIN
15	2	6	330-00776-78	CONNECTOR, PLUG (J8001/J8002)	GARMIN
15	AR (19)	AR (19)	5	336-00021-00	CONTACT, PIN ALT: P/N M39029/58-360
15	1	4	011-01782-00	USB-B PIGTAIL	GARMIN
	1	3	011-00979-20	CONFIGURATION MODULE	GARMIN
	1	2	MS26574-5	CIRCUIT BREAKER, 5A	MIL SPEC
	1	1	010-00962-10	GTS 855	GARMIN
			-013	NO DME INSTALLED	
			-011	DME INSTALLED	
-013 QTY	-011 QTY	ITEM	PART NUMBER	DESCRIPTION	REMARKS

**BILL OF MATERIALS**

PREPARED	<i>[Signature]</i>	 <p>COPYRIGHT ©2022 BY EAGLE COPTERS MAINTENANCE LTD THIS DOCUMENT IS PRIVATE AND CONFIDENTIAL AND IS SUPPLIED ON THE EXPRESS CONDITION THAT IT IS NOT TO BE USED FOR ANY PURPOSE OR COPIED OR COMMUNICATED TO ANY OTHER PERSON WITHOUT WRITTEN PERMISSION FROM EAGLE COPTERS MAINTENANCE LTD.</p>
REVIEWED	<i>[Signature]</i>	
RELEASED	<i>[Signature]</i>	
SCALE:	NTS	
TITLE:		<b>WIRING DIAGRAM</b> <b>GARMIN GTS 855 TCAS</b> <b>BELL 212</b>
DWG:		<b>E2006-11-11</b>
REV:	B	SHEET:
		<b>1 OF 4</b>



**GARMIN TCAS SYSTEM GTS 855** (1)

AIRCRAFT POWER 1  
AIRCRAFT POWER 1

POWER GROUND  
POWER GROUND

POWER GROUND  
POWER GROUND  
TRAFFIC SYS RMT PWR ON

ETHERNET OUT A  
ETHERNET OUT B  
ETHERNET IN A  
ETHERNET IN B

CONFIG MODULE GROUND  
CONFIG MODULE POWER  
CONFIG MODULE DATA  
CONFIG MODULE CLOCK

USB VBUS POWER  
USB VBUS DATA HI  
USB VBUS DATA LO  
USB VBUS GROUND  
SIGNAL GROUND

AIR/GROUND  
TRAFFIC SYSTEM VALID

AUDIO HI  
AUDIO LO

SUPPRESSION I/O

ADVISORY CANCEL

J1 BTM (YEL)  
J2 BTM (BLK)  
J3 BTM (BLU)  
J4 BTM (RED)  
J1 TOP (YEL)  
J2 TOP (BLK)  
J3 TOP (BLU)  
J4 TOP (RED)

(2006-P8003) (8) (9) (10)

2006-GTS001A20

2006-GTS005A20N

2006-GTS007A20N

(2006-P8001) (5) (6) (7) (11)

2006-GTSHSDB01

(3) CONFIG MOD

BK  
R  
Y  
W

(4) USB RECP

R  
G  
W  
BK

(2006-P8002) (5) (6) (7)

JUMPER

W  
B

2006-GTS201A22

2006-GTS101C22

2006-GTS008A22

(P1 BTM) (14) (13) (14) (P1)

TCAS001

(P2 BTM) (14) (13) (14) (P2)

TCAS002

(P3 BTM) (14) (13) (14) (P3)

TCAS003

(P4 BTM) (14) (13) (14) (P4)

TCAS004

(P1 TOP) (14) (13) (14) (P1)

TCAS005

(P2 TOP) (14) (13) (14) (P2)

TCAS006

(P3 TOP) (14) (13) (14) (P3)

TCAS007

(P4 TOP) (14) (13) (14) (P4)

TCAS008

TCAS (2)

5A ES AVIONICS BUSS  
PWR REF: D212-725-2-G2

2006-1N3  
F  
C  
LOC: AFT CENTRE CONSOLE

(2006-P3252) GARMIN GTX-345R TRANSPONDER

ETHERNET IN 2A  
ETHERNET IN 2B  
ETHERNET OUT 2A  
ETHERNET OUT 2B

(2006-P3251) EXTERNAL SUPPRESSION  
REF: E2006-11-9  
LOC: LOWER NOSE SHELF

(2006-P631) BENDIX KING DME KN 63  
SUPPRESSION  
REF: E2006-11-7  
LOC: LOWER NOSE SHELF

2006-GTS101A22

2006-GTS101B22

2006-1N1  
B  
LOC: AFT CENTRE CONSOLE

2006-GTS009A22N

(2006-20P1) EAGLE P178 AUDIO MIXER

INPUT 1 HI  
INPUT 1 LO  
INPUT 2 HI  
INPUT 2 LO  
REF: 7002-MI-001  
LOC: LOWER NOSE SHELF

(2006-5P2) EAGLE P139-HD AUDIO ROUTER

TX 19 KEY  
REF: GA212-3  
LOC: LOWER NOSE SHELF

GARMIN TCAS ANTENNA GA 58 (12)  
LOC: FWD BELLY PANEL

J1 DIR ANT (YEL)  
J2 DIR ANT (BLK)  
J3 DIR ANT (BLU)  
J4 DIR ANT (RED)

GARMIN TCAS ANTENNA GA 58 (12)  
LOC: ROOF

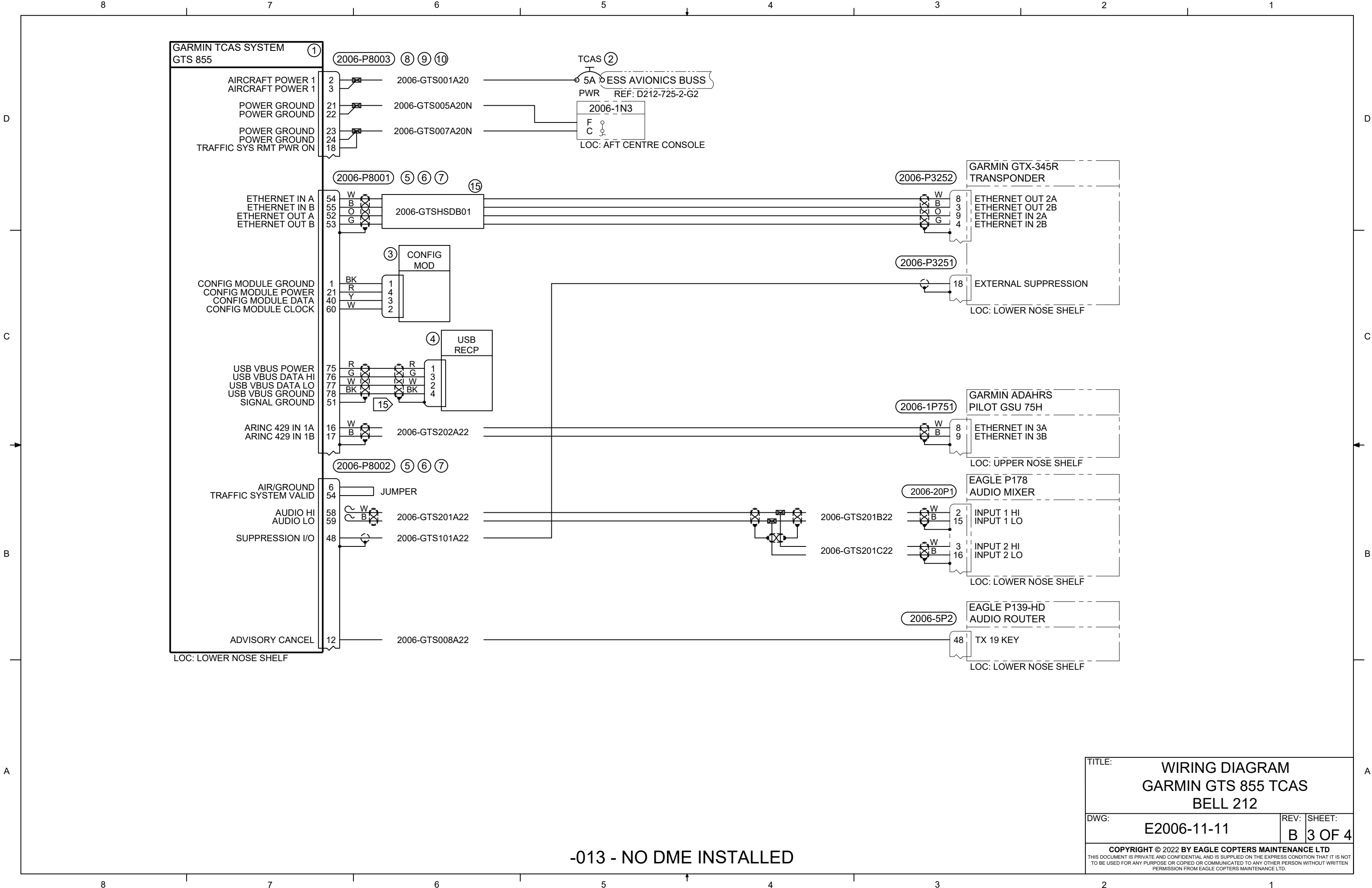
J1 DIR ANT (YEL)  
J2 DIR ANT (BLK)  
J3 DIR ANT (BLU)  
J4 DIR ANT (RED)

TITLE: **WIRING DIAGRAM  
GARMIN GTS 855 TCAS  
BELL 212**

DWG: **E2006-11-11** REV: **B** SHEET: **2 OF 4**

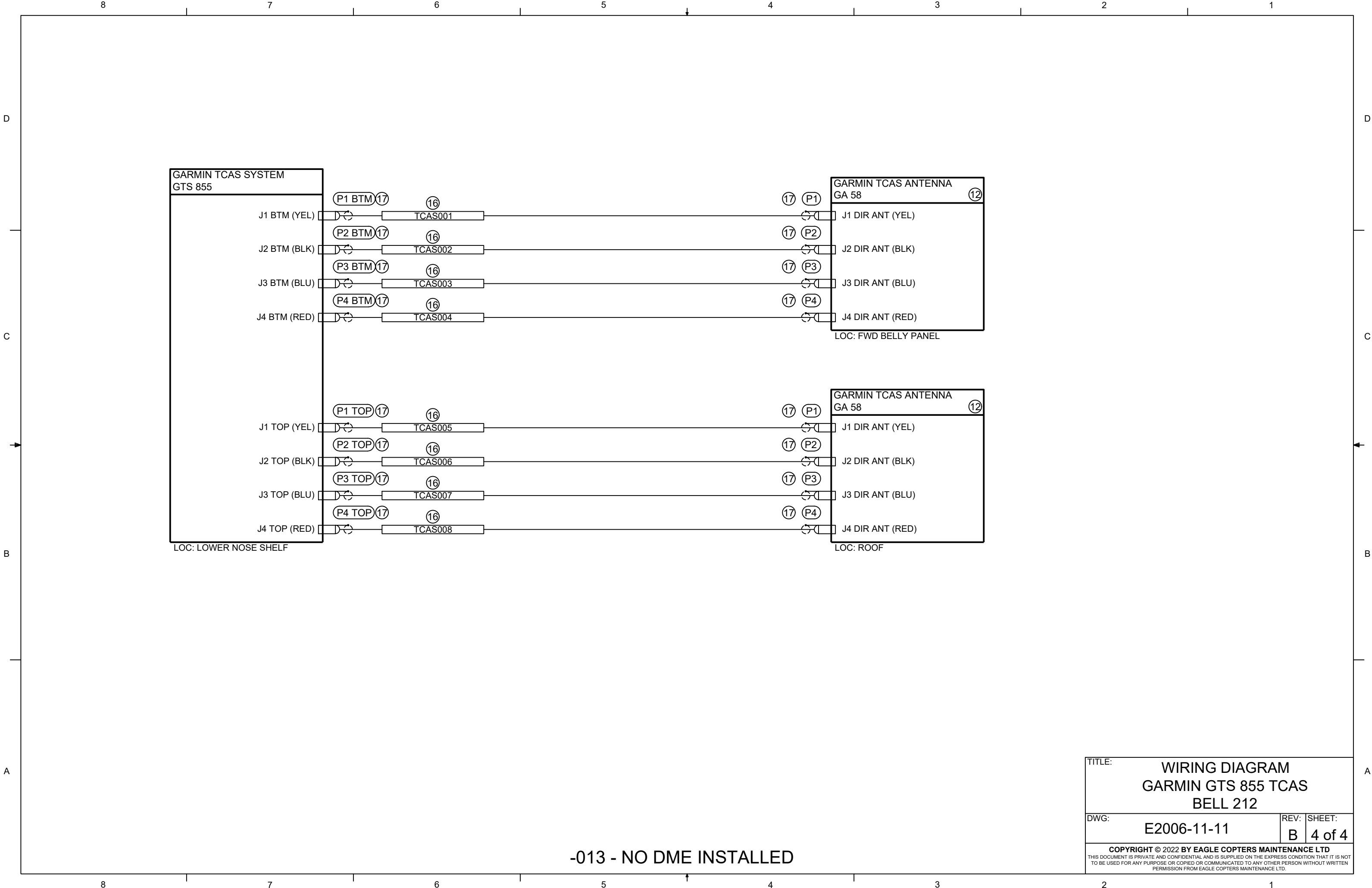
COPYRIGHT © 2022 BY EAGLE COPTERS MAINTENANCE LTD  
THIS DOCUMENT IS PRIVATE AND CONFIDENTIAL AND IS SUPPLIED ON THE EXPRESS CONDITION THAT IT IS NOT  
TO BE USED FOR ANY PURPOSE OR COPIED OR COMMUNICATED TO ANY OTHER PERSON WITHOUT WRITTEN  
PERMISSION FROM EAGLE COPTERS MAINTENANCE LTD.

**-011 - DME INSTALLED**



-013 - NO DME INSTALLED

TITLE:		WIRING DIAGRAM GARMIN GTS 855 TCAS BELL 212	
DWG:	E2006-11-11	REV:	B
SHEET:		3 OF 4	
<small>COPYRIGHT © 2022 BY EAGLE COPTERS MAINTENANCE LTD        THIS DOCUMENT IS PRIVATE AND CONFIDENTIAL AND IS SUPPLIED ON THE EXPRESS CONDITION THAT IT IS NOT TO BE USED FOR ANY PURPOSE OR COPIED OR COMMUNICATED TO ANY OTHER PERSON WITHOUT WRITTEN PERMISSION FROM EAGLE COPTERS MAINTENANCE LTD.</small>			



-013 - NO DME INSTALLED

TITLE:			WIRING DIAGRAM GARMIN GTS 855 TCAS BELL 212		
DWG:	E2006-11-11	REV:	B	SHEET:	4 of 4
<small>COPYRIGHT © 2022 BY EAGLE COPTERS MAINTENANCE LTD THIS DOCUMENT IS PRIVATE AND CONFIDENTIAL AND IS SUPPLIED ON THE EXPRESS CONDITION THAT IT IS NOT TO BE USED FOR ANY PURPOSE OR COPIED OR COMMUNICATED TO ANY OTHER PERSON WITHOUT WRITTEN PERMISSION FROM EAGLE COPTERS MAINTENANCE LTD.</small>					