

REV	DESCRIPTION	DATE
A	NEW ISSUE	09-09-2021
B	UPDATED GARMIN GDU 1060 PILOT/COPILOT PFD/MFD CONNECTION LABELS	11-11-2022

NOTES:

————— NEW WIRE / UNIT
 ————— EXISTING WIRE / UNIT

- PERFORM ALL WORK IN ACCORDANCE WITH BELL HELICOPTER STANDARD PRACTICES MANUAL BHT-ELEC-SPM.
- ALL NEW UNSHIELDED WIRE USE M22759/41-(XX)-9 OR EQUIVALENT TYPE WIRE. (M22759/41-(XX)-9 IS NOT INTENDED TO BE USED IN SOLDER APPLICATIONS, SOLDERABILITY CAN BE ACHIEVED WITH THE PROPER SOLDER. USE CRIMP SPLICES FOR REPAIR). ALL WIRES 22 AWG UNLESS OTHERWISE SPECIFIED BY WIRE CODE. ALL JUMPERS TO BE LESS THAN 6 INCHES.
- ALL NEW SHIELDED WIRE USE M27500-(XX)SM(X)N23 OR EQUIVALENT TYPE WIRE. (M27500-(XX)SM(X)N23 IS NOT INTENDED TO BE USED IN SOLDER APPLICATIONS, SOLDERABILITY CAN BE ACHIEVED WITH THE PROPER SOLDER. USE CRIMP SPLICES FOR REPAIR). SOLDER SLEEVES SHALL USE SN96 SOLDER, USE P/N S200-X-00 OR EQUIVALENT.
- ALL SHIELD TERMINATIONS SHALL BE INSTALLED PER MIL-S-83519 OR EQUIVALENT. SHIELD TERMINATIONS SHOWN AS "DAISY-CHAINED" ARE FOR DRAWING CLARITY ONLY. INDIVIDUAL SHIELD EXTENSIONS SHALL BE SPLICED AT A COMMON TIE POINT TO THE TERMINATING WIRES. THE BACK SHELL OR AIRFRAME GROUND MAY BE USED.
- ALL AIRFRAME GROUNDS SHALL BE VIA AMP LUG OR GROUNDING BLOCK AND PROVIDE SEPARATE GROUND STUD LOCATIONS FOR DC POWER GROUNDS, AC POWER GROUNDS, CHASSIS GROUNDS, SIGNAL GROUNDS AND SHIELD GROUNDS.
- ALL EQUIPMENT BONDING TO ADJACENT AIRFRAME STRUCTURE TO BE 0.003 OHM OR LESS. ALL ELECTRICAL GROUNDING AND BONDING TO BE INSTALLED IN ACCORDANCE WITH THE LATEST REVISION OF BHT-ELEC-SPM CHAPTER 8.
- ALL TERMINALS TO BE INSTALLED IN ACCORDANCE WITH THE LATEST REVISION OF BHT-ELEC-SPM CHAPTER 4 PARAGRAPH 4-9.
- ALL CONNECTORS TO BE INSTALLED IN ACCORDANCE WITH THE LATEST REVISION OF BHT-ELEC-SPM CHAPTER 5. ENSURE ALL UNUSED CONNECTOR CONTACTS ARE FILLED WITH SPARE PINS/SOCKETS OR PLASTIC GROMMET SEALING PLUGS. ENSURE ALL BULKHEAD MOUNTED CONNECTORS ARE PROPERLY BONDED TO AIRFRAME.
- ENSURE ALL SWITCHES, CIRCUIT BREAKERS, AND REMOTE MOUNTED BOXES ARE LABELED WITH A CONSISTENT SIZE, FONT, COLOR, BACKGROUND AND ARE ILLUMINATED CONSISTENT AS EXISTING LABELS.
- ROUTE ALL WIRES AND CABLES WITH EXISTING WIRE ROUTES WHERE POSSIBLE AND CLAMP IN ACCORDANCE WITH THE LATEST REVISION OF BHT-ELEC-SPM CHAPTER 6. WIRES MUST BE ROUTED WITH A MINIMUM OF 6 INCHES OF SEPARATION FROM OXYGEN AND FLUID LINES (MIN 2 INCHES IF WIRES IN CONDUIT).
- INSTALL SYSTEM IN ACCORDANCE WITH THE LATEST REVISION OF THE MANUFACTURERS INSTALLATION MANUAL.
- LOWERCASE LETTER CONNECTOR PIN DESIGNATORS ARE SHOWN AS UNDERLINED UPPERCASE LETTERS.
- AS THE DRAIN WIRE IS UN-INSULATED, A TEFLON SLEEVE (18 AWG OR HIGHER) IS REQUIRED OVER THE EXPOSED AREA BACK TO THE OUTER INSULATION OF THE CABLE. THE DRAIN WIRE IS CONNECTED TO THE METALLIC AREA AROUND THE USB RECEPTACLE. REFERENCE GARMIN GRA 5500 INSTALLATION MANUAL, PN: 190-01277-00 REV. F, APPENDIX D, PAGE D-4, NOTE 5.
- INCLUDED IN KIT PN: 011-02573-01
- THE CUMULATIVE COAX CABLE LENGTH BETWEEN LRU AND ANTENNA NOT TO EXCEED 40 FT.
- POWER WIRES NOT TO EXCEED 40 FT.

2	11	PE9154	CONNECTOR, BULKHEAD, TNC/TNCF	PASTERNAK
2	10	013-00378-00	ANTENNA, RAD ALT	GARMIN
AR (80)	9	S44193	COAX CABLE, 50 OHM	PIC
3	8	190108	CONNECTOR, TNC, COAX	PIC
14	1	011-02582-00	CONFIGURATION MODULE	GARMIN
14	1	011-01782-00	USB TYPE B RECEPTACLE	GARMIN
14	1	M85049/38S17N	BACKSHELL	MIL SPEC
14	AR (55)	M39029/56-348	CONTACT, SOCKET	MIL SPEC
14	1	D38999/26ME35SA	CONNECTOR, PLUG	MIL SPEC
1	2	MS22073-5	CIRCUIT BREAKER, 5A	MIL SPEC
1	1	010-00946-00	RAD ALT. GRA 5500	GARMIN
-1 QTY	ITEM	PART NUMBER	DESCRIPTION	REMARKS

BILL OF MATERIALS

PREPARED	<i>EL</i>
REVIEWED	<i>EB</i>
RELEASED	<i>JP</i>
SCALE:	NTS



TITLE: WIRING DIAGRAM GARMIN GRA 5500 RAD ALT BELL 212		DWG: E2006-11-5
REV: B	SHEET: 1 OF 2	

THIS DRAWING IS UNCONTROLLED UNLESS OPENED DIRECTLY FROM ECML'S CONTROLLED REPOSITORY

D

D

C

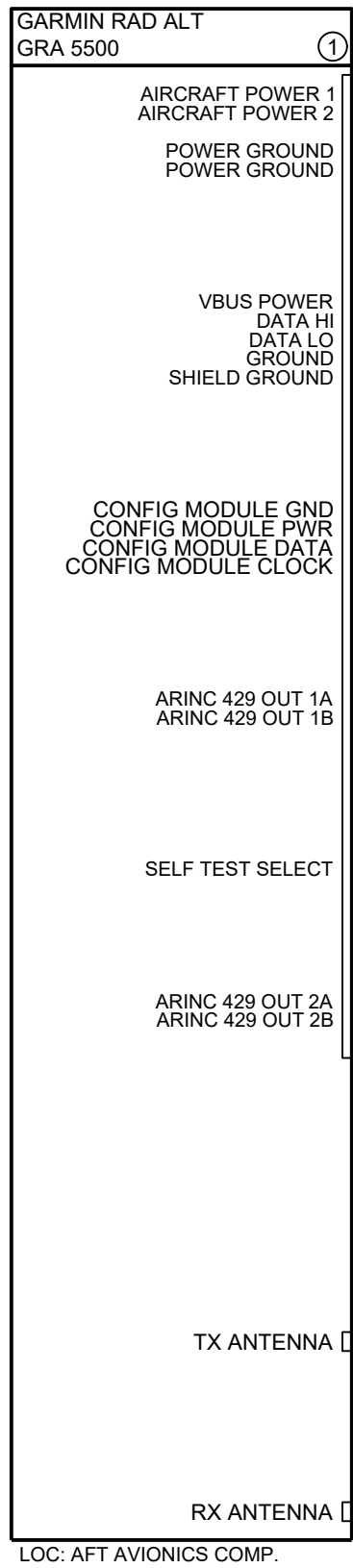
C

B

B

A

A



RAD ALT (2)

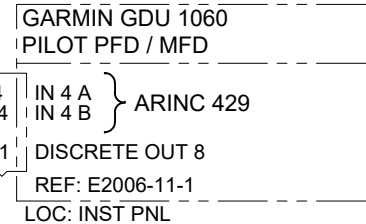
5A NON-ESS AVIONICS BUSS
PWR REF: D212-725-2-G2

(2006-3N1)

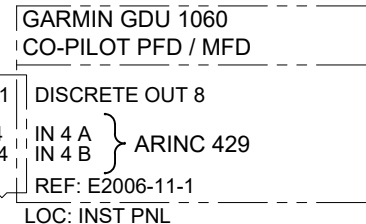
(6)

(7)

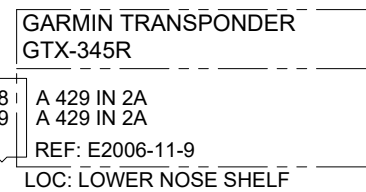
(2006-1P4)



(2006-2P4)



(2006-P3251)



(8)

(9)

(8)

(11)

(8)

(9)

(8)

(10)

LOC: TAILBOOM FWD

(8)

(9)

(8)

(11)

(8)

(9)

(8)

(10)

LOC: TAILBOOM AFT

TITLE:		WIRING DIAGRAM GARMIN GRA 5500 RAD ALT BELL 212	
DWG:	E2006-11-5	REV:	B 2 OF 2
<small>COPYRIGHT © 2022 BY EAGLE COPTERS MAINTENANCE LTD THIS DOCUMENT IS PRIVATE AND CONFIDENTIAL AND IS SUPPLIED ON THE EXPRESS CONDITION THAT IT IS NOT TO BE USED FOR ANY PURPOSE OR COPIED OR COMMUNICATED TO ANY OTHER PERSON WITHOUT WRITTEN PERMISSION FROM EAGLE COPTERS MAINTENANCE LTD.</small>			