

REV	DESCRIPTION	DATE
A	NEW ISSUE	09-09-2021
B	RENAMED TCAS. ADDED -013 CONFIG WITH NO DME INSTALLED.	14-01-2023

_____ NEW WIRE / UNIT
 - - - - - EXISTING WIRE / UNIT

NOTES:

- PERFORM ALL WORK IN ACCORDANCE WITH BELL HELICOPTER STANDARD PRACTICES MANUAL BHT-ELEC-SPM.
- ALL NEW UNSHIELDED WIRE USE M22759/41-(XX)-9 OR EQUIVALENT TYPE WIRE. (M22759/41-(XX)-9 IS NOT INTENDED TO BE USED IN SOLDER APPLICATIONS, SOLDERABILITY CAN BE ACHIEVED WITH THE PROPER SOLDER. USE CRIMP SPLICES FOR REPAIR). ALL WIRES 22 AWG UNLESS OTHERWISE SPECIFIED BY WIRE CODE. ALL JUMPERS TO BE LESS THAN 6 INCHES.
- ALL NEW SHIELDED WIRE USE M27500-(XX)SM(X)N23 OR EQUIVALENT TYPE WIRE. (M27500-(XX)SM(X)N23 IS NOT INTENDED TO BE USED IN SOLDER APPLICATIONS, SOLDERABILITY CAN BE ACHIEVED WITH THE PROPER SOLDER. USE CRIMP SPLICES FOR REPAIR). SOLDER SLEEVES SHALL USE SN96 SOLDER, USE P/N S200-X-00 OR EQUIVALENT.
- ALL SHIELD TERMINATIONS SHALL BE INSTALLED PER MIL-S-83519 OR EQUIVALENT. SHIELD TERMINATIONS SHOWN AS "DAISY-CHAINED" ARE FOR DRAWING CLARITY ONLY. INDIVIDUAL SHIELD EXTENSIONS SHALL BE SPLICED AT A COMMON TIE POINT TO THE TERMINATING WIRES. THE BACK SHELL OR AIRFRAME GROUND MAY BE USED.
- ALL AIRFRAME GROUNDS SHALL BE VIA AMP LUG OR GROUNDING BLOCK AND PROVIDE SEPARATE GROUND STUD LOCATIONS FOR DC POWER GROUNDS, AC POWER GROUNDS, CHASSIS GROUNDS, SIGNAL GROUNDS AND SHIELD GROUNDS.
- ALL EQUIPMENT BONDING TO ADJACENT AIRFRAME STRUCTURE TO BE 0.003 OHM OR LESS. ALL ELECTRICAL GROUNDING AND BONDING TO BE INSTALLED IN ACCORDANCE WITH THE LATEST REVISION OF BHT-ELEC-SPM CHAPTER 8.
- ALL TERMINALS TO BE INSTALLED IN ACCORDANCE WITH THE LATEST REVISION OF BHT-ELEC-SPM CHAPTER 4 PARAGRAPH 4-9.
- ALL CONNECTORS TO BE INSTALLED IN ACCORDANCE WITH THE LATEST REVISION OF BHT-ELEC-SPM CHAPTER 5. ENSURE ALL UNUSED CONNECTOR CONTACTS ARE FILLED WITH SPARE PINS/SOCKETS OR PLASTIC GROMMET SEALING PLUGS. ENSURE ALL BULKHEAD MOUNTED CONNECTORS ARE PROPERLY BONDED TO AIRFRAME.
- ENSURE ALL SWITCHES, CIRCUIT BREAKERS, AND REMOTE MOUNTED BOXES ARE LABELED WITH A CONSISTENT SIZE, FONT, COLOR, BACKGROUND AND ARE ILLUMINATED CONSISTENT AS EXISTING LABELS.
- ROUTE ALL WIRES AND CABLES WITH EXISTING WIRE ROUTES WHERE POSSIBLE AND CLAMP IN ACCORDANCE WITH THE LATEST REVISION OF BHT-ELEC-SPM CHAPTER 6. WIRES MUST BE ROUTED WITH A MINIMUM OF 6 INCHES OF SEPARATION FROM OXYGEN AND FLUID LINES (MIN 2 INCHES IF WIRES IN CONDUIT).
- INSTALL SYSTEM IN ACCORDANCE WITH THE LATEST REVISION OF THE MANUFACTURERS INSTALLATION MANUAL.
- LOWERCASE LETTER CONNECTOR PIN DESIGNATORS ARE SHOWN AS UNDERLINED UPPERCASE LETTERS.
- INCLUDED IN KIT PN: 011-02977-01
- INCLUDED IN KIT PN: 010-01217-02
- THE CUMULATIVE COAX CABLE LENGTH BETWEEN LRU AND ANTENNA NOT TO EXCEED 10 FT.
- POWER WIRES NOT TO EXCEED 30 FT.

AR (25)	AR (25)	11	M17/60-RG142	CABLE, COX	PIC
1	1	10	CI-105	ANTENNA, TRANSPONDER	COMANT
2	2	9	190112	CONNECTOR, BNC	TE CONNECTIVITY
13	1	8	011-00979-03	KIT, CONFIGURATION MODULE	GARMIN
13	1	7	125-00081-00	BACKSHELL	GARMIN
13	1	6	125-00084-00	BACKSHELL	GARMIN
13	AR (77)	AR (77)	5	336-00021-00	CONTACT, PIN
13	1	4	330-00185-15	CONNECTOR, PLUG	GARMIN
14	1	3	330-00185-62	CONNECTOR, PLUG	GARMIN
1	1	2	MS22073-3	CIRCUIT BREAKER, 5A	MIL SPEC
1	1	1	011-03303-00	TRANSPONDER, GTX 345R	GARMIN
			-013	NO DME INSTALLED	
			-011	DME INSTALLED	
-013 QTY	-011 QTY	ITEM	PART NUMBER	DESCRIPTION	REMARKS

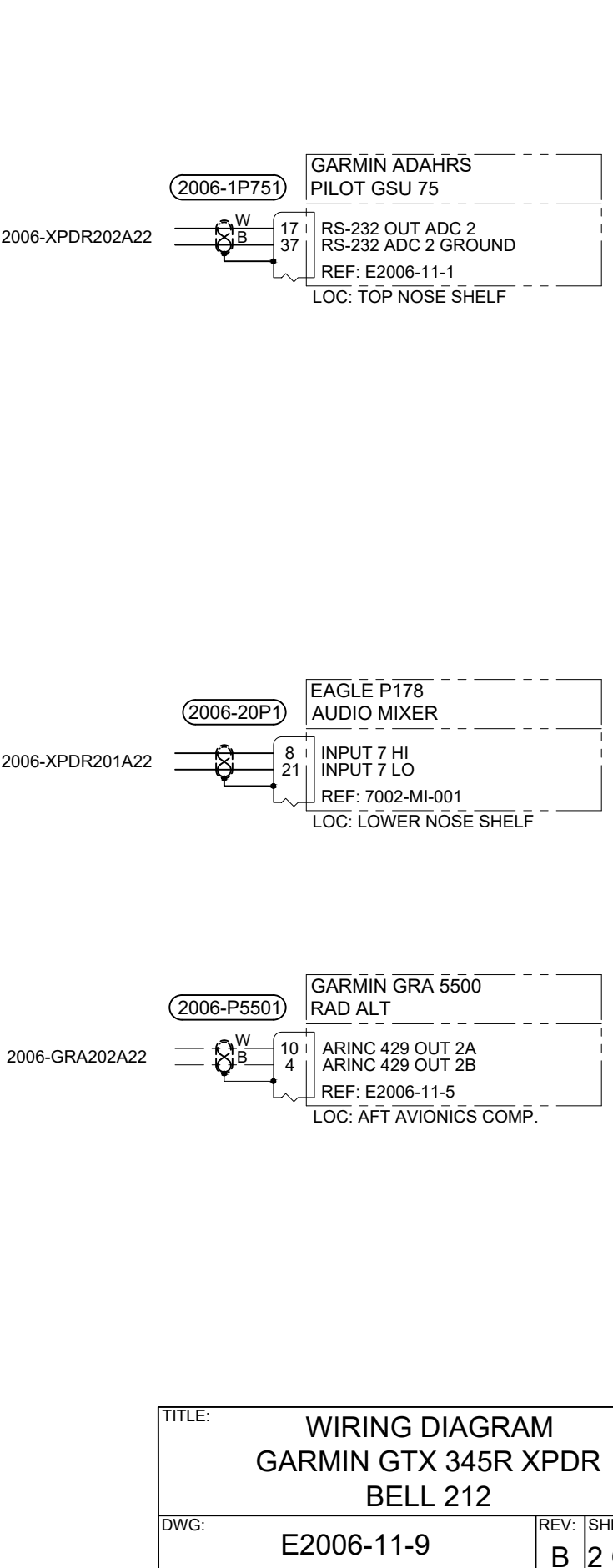
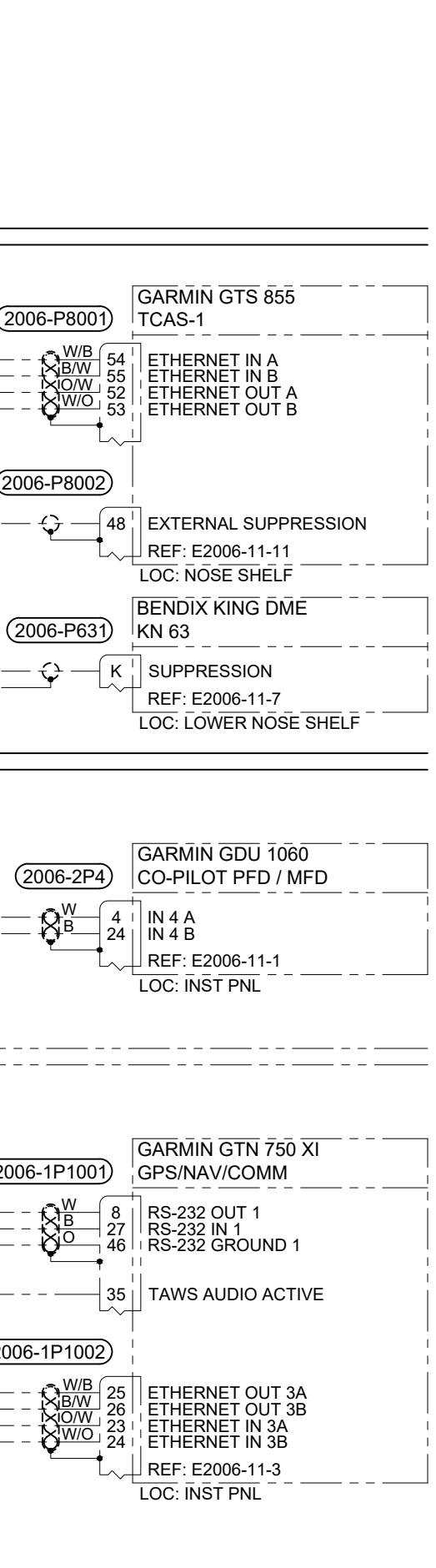
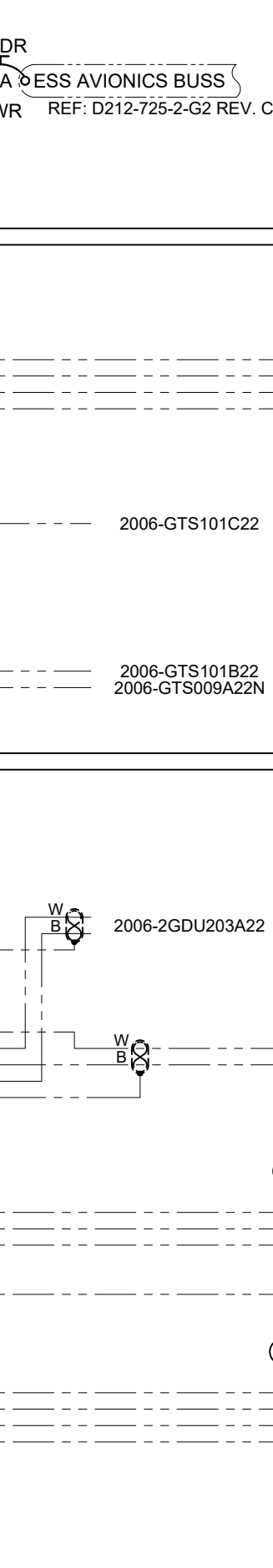
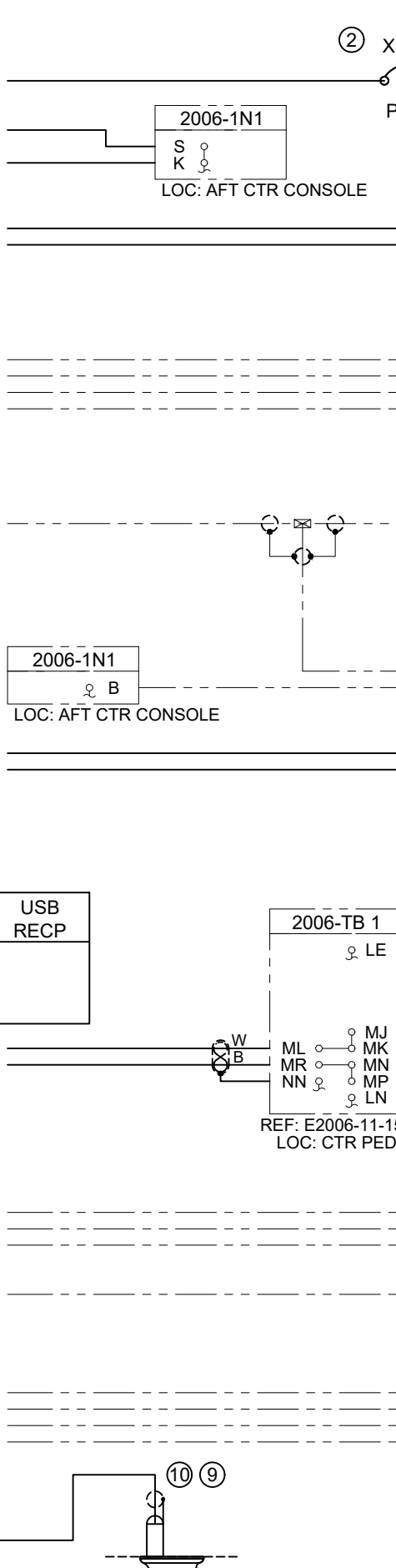
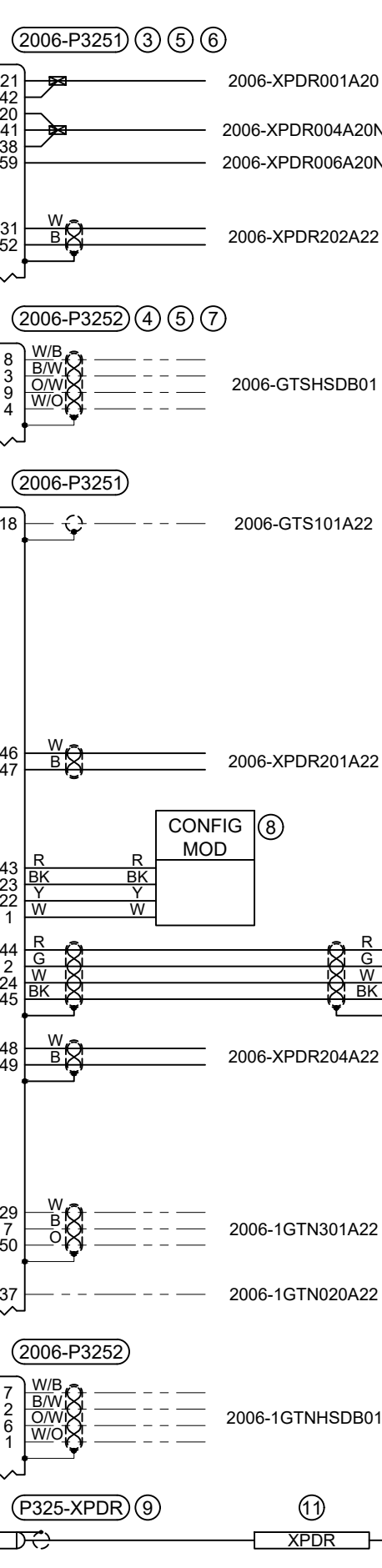
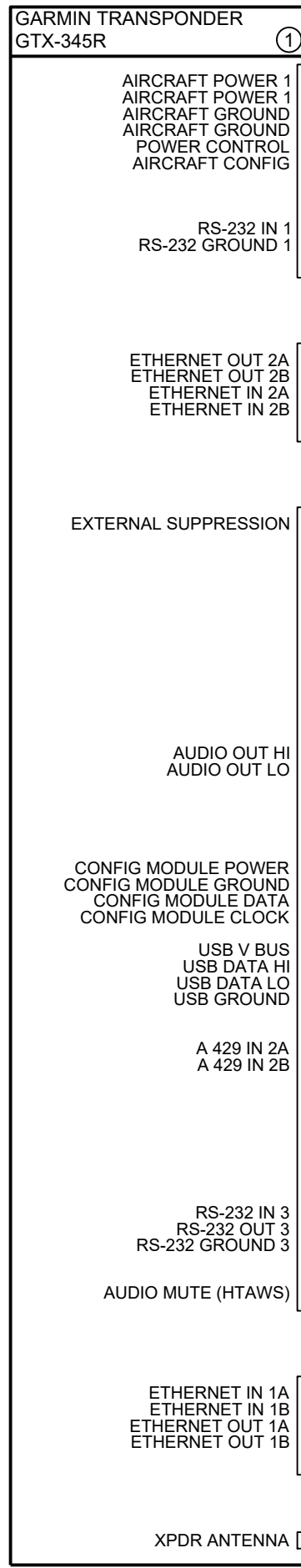
BILL OF MATERIALS

PREPARED	<i>[Signature]</i>
REVIEWED	<i>NF</i>
RELEASED	<i>[Signature]</i>
SCALE:	NTS



TITLE: WIRING DIAGRAM GARMIN GTX 345R XPDR BELL 212		DWG: E2006-11-9
REV: B	SHEET: 1 OF 3	

THIS DRAWING IS UNCONTROLLED UNLESS OPENED DIRECTLY FROM ECML'S CONTROLLED REPOSITORY



TITLE: **WIRING DIAGRAM GARMIN GTX 345R XPDR BELL 212**

DWG: **E2006-11-9** REV: **B** SHEET: **2 OF 3**

COPYRIGHT © 2023 BY EAGLE COPTERS MAINTENANCE LTD
 THIS DOCUMENT IS PRIVATE AND CONFIDENTIAL AND IS SUPPLIED ON THE EXPRESS CONDITION THAT IT IS NOT TO BE USED FOR ANY PURPOSE OR COPIED OR COMMUNICATED TO ANY OTHER PERSON WITHOUT WRITTEN PERMISSION FROM EAGLE COPTERS MAINTENANCE LTD.

-011 - DME INSTALLED

D
C
B
A

D
C
B
A

8 7 6 5 4 3 2 1

8 7 6 5 4 3 2 1

**GARMIN TRANSPONDER
GTX-345R** (1)

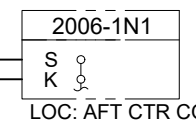
(2006-P3251) (3) (5) (6)

(2) XPDR
3A
PWR REF: D212-725-2-G2 REV. C

AIRCRAFT POWER 1
AIRCRAFT POWER 1
AIRCRAFT GROUND
AIRCRAFT GROUND
POWER CONTROL
AIRCRAFT CONFIG

21
42
20
41
38
59

2006-XPDR001A20
2006-XPDR004A20N
2006-XPDR006A20N



RS-232 IN 1
RS-232 GROUND 1

31
52

2006-XPDR202A22

ETHERNET OUT 2A
ETHERNET OUT 2B
ETHERNET IN 2A
ETHERNET IN 2B

8
3
9
4

2006-GTSHSDB01

(2006-P8001)

**GARMIN GTS 855
TCAS-1**

ETHERNET IN A
ETHERNET IN B
ETHERNET OUT A
ETHERNET OUT B

54
55
52
53

EXTERNAL SUPPRESSION

18

2006-GTS101A22

(2006-P8002)

**GARMIN GTS 855
TCAS-1**

EXTERNAL SUPPRESSION
REF: E2006-11-11
LOC: NOSE SHELF

48

AUDIO OUT HI
AUDIO OUT LO

46
47

2006-XPDR201A22

2006-XPDR201A22

(2006-20P1)

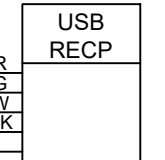
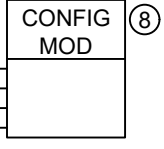
**EAGLE P178
AUDIO MIXER**

INPUT 7 HI
INPUT 7 LO
REF: 7002-MI-001
LOC: LOWER NOSE SHELF

8
21

CONFIG MODULE POWER
CONFIG MODULE GROUND
CONFIG MODULE DATA
CONFIG MODULE CLOCK

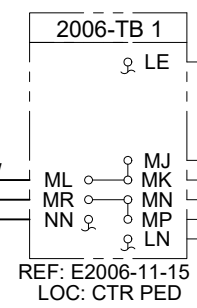
43
23
22
1



USB V BUS
USB DATA HI
USB DATA LO
USB GROUND

44
2
24
45

2006-XPDR204A22



2006-2GDU203A22

(2006-2P4)

**GARMIN GDU 1060
CO-PILOT PFD / MFD**

IN 4 A
IN 4 B
REF: E2006-11-1
LOC: INSTR PNL

4
24

A 429 IN 2A
A 429 IN 2B

48
49

2006-XPDR204A22

2006-GRA202A22

(2006-P5501)

**GARMIN GRA 5500
RAD ALT**

ARINC 429 OUT 2A
ARINC 429 OUT 2B
REF: E2006-11-5
LOC: AFT AVIONICS COMP.

10
4

RS-232 IN 3
RS-232 OUT 3
RS-232 GROUND 3

29
7
50

2006-1GTN301A22

(2006-1P1001)

**GARMIN GTN 750 XI #1
GPS/NAV/COMM**

RS-232 OUT 1
RS-232 IN 1
RS-232 GROUND 1

8
27
46

AUDIO MUTE (HTAWS)

37

2006-1GTN020A22

(2006-1P1002)

**GARMIN GTN 750 XI #1
GPS/NAV/COMM**

ETHERNET OUT 3A
ETHERNET OUT 3B
ETHERNET IN 3A
ETHERNET IN 3B
REF: E2006-11-3
LOC: CTR PED

25
26
23
24

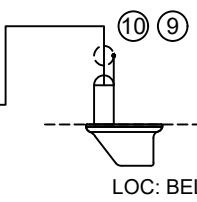
ETHERNET IN 1A
ETHERNET IN 1B
ETHERNET OUT 1A
ETHERNET OUT 1B

7
2
6
1

2006-1GTNHSD01

(P325-XPDR) (9)

(11)



XPDR ANTENNA
LOC: LOWER NOSE SHELF

-013 - NO DME INSTALLED

TITLE: **WIRING DIAGRAM
GARMIN GTX 345R XPDR
BELL 212**

DWG: **E2006-11-9** REV: **B** SHEET: **3 OF 3**

COPYRIGHT © 2023 BY EAGLE COPTERS MAINTENANCE LTD
THIS DOCUMENT IS PRIVATE AND CONFIDENTIAL AND IS SUPPLIED ON THE EXPRESS CONDITION THAT IT IS NOT
TO BE USED FOR ANY PURPOSE OR COPIED OR COMMUNICATED TO ANY OTHER PERSON WITHOUT WRITTEN
PERMISSION FROM EAGLE COPTERS MAINTENANCE LTD.