


REV	DESCRIPTION	DATE
A	NEW ISSUE FOR GENERATION 2 HELICOPTERS.	14-03-2008
B	UPDATED SERIAL NUMBER APPLICABILITY.	16-02-2023
C	ALL SHEETS: CLARIFIED WIRE ROUTING.	23-01-2024

NOTES:

1. CABLES ROUTE INTO CB PANELS.
2. WIRE BUNDLE ROUTES DOWN LH SIDEWALL.
3. CABLE ROUTES DOWN RH SIDEWALL TO LOWER NOSE COMPARTMENT.
4. WIRE BUNDLE ROUTES UP TO CB PANEL DISCONNECTS.
5. WIRE BUNDLE ROUTES FORWARD TO LOWER NOSE COMPARTMENT.
6. WIRE BUNDLE ROUTES UP RH SIDEWALL TO Z55 & DS26.
7. WIRE BUNDLE ROUTES UP LH SIDEWALL FOR CEILING WIRE RUNS.
8. WIRE BUNDLE IS CAPPED AND STOWED UNLESS LONGLINE/HELITORCH SYSTEM INSTALLED.
9. CABLE ROUTES UP RH SIDEWALL TO TB901.
10. WIRING TO BE ENCLOSED IN TYGON R-3603 TUBING (OR EQUIVALENT) INSIDE LEFT & RIGHT FUEL CELL AREA.
11. COMPONENT PLACEMENT MAY VARY DUE TO AVIONICS INSTALLATIONS.
12. WIRE BUNDLE ROUTES TO MAIN BUNDLE.
13. INSTALLED ON BACK SIDE OF PANEL.
14. CAP AND STOW UNUSED CONNECTORS.
15. INSTALL GROUND STUDS AS INDICATED BY . INSTALL GROUND STUDS I.A.W. BHT-ELEC-SPM.
16. ALL WIRING TO BE INSTALLED IN ACCORDANCE WITH THE LATEST REVISION OF BHT-ELEC-SPM CHAPTER 6. WIRES MUST BE ROUTED WITH A MINIMUM OF 6 INCHES OF SEPARATION FROM OXYGEN AND FLUID LINES (MIN 2 INCHES IF WIRES IN CONDUIT).
17. CONNECTORS P/J 9001 THRU 9008 ARE OPTIONAL DISCONNECTS AND MAY NOT BE INSTALLED.

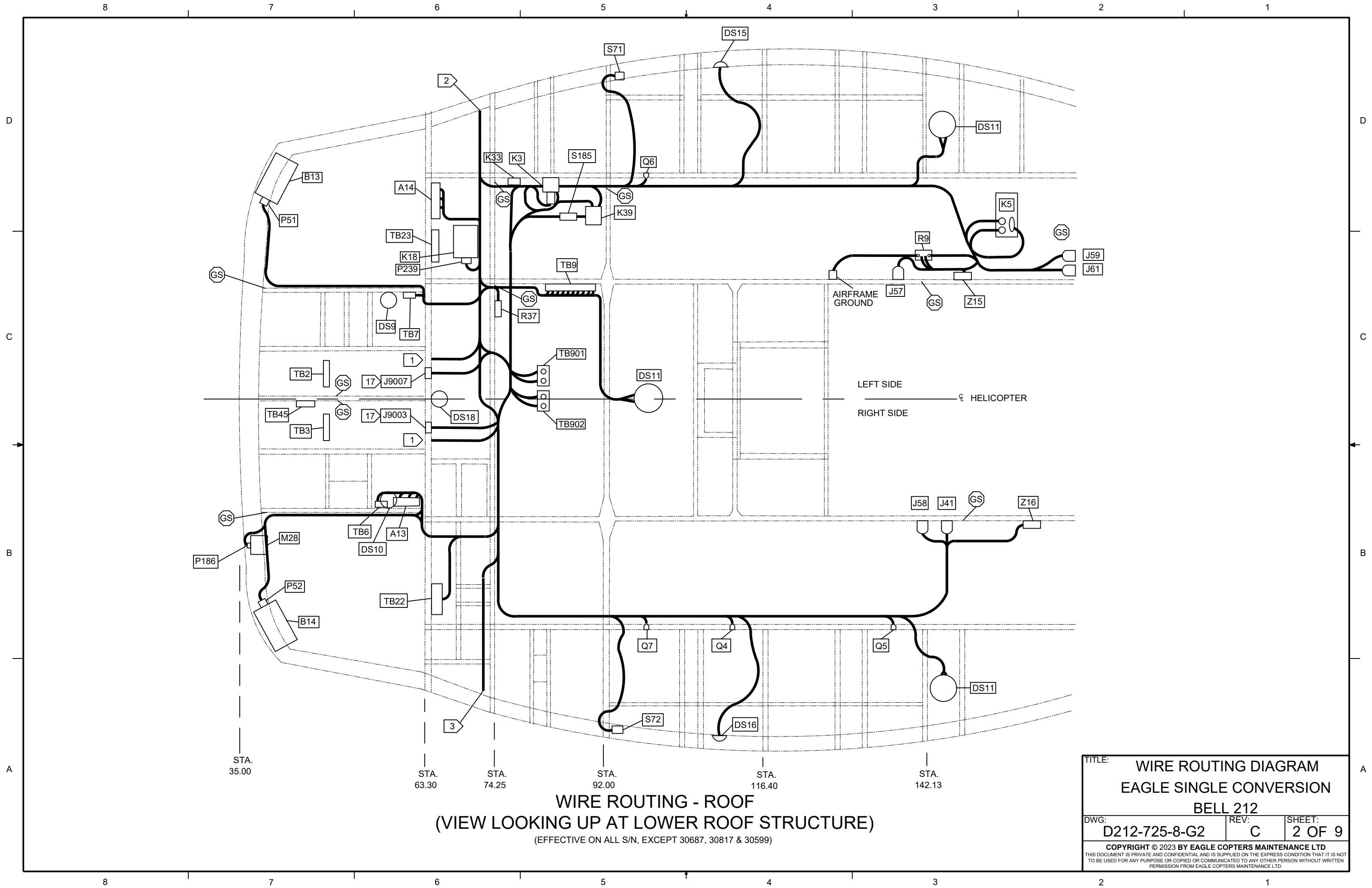
PREPARED	<i>NF</i>
REVIEWED	<i>MP</i>
RELEASED	<i>MP</i>
SCALE:	NTS



EAGLE
COPYRIGHT ©2023 BY EAGLE COPTERS MAINTENANCE LTD
 THIS DOCUMENT IS PRIVATE AND CONFIDENTIAL AND IS SUPPLIED ON THE EXPRESS CONDITION THAT IT IS NOT
 TO BE USED FOR ANY PURPOSE OR COPIED OR COMMUNICATED TO ANY OTHER PERSON WITHOUT WRITTEN
 PERMISSION FROM EAGLE COPTERS MAINTENANCE LTD.

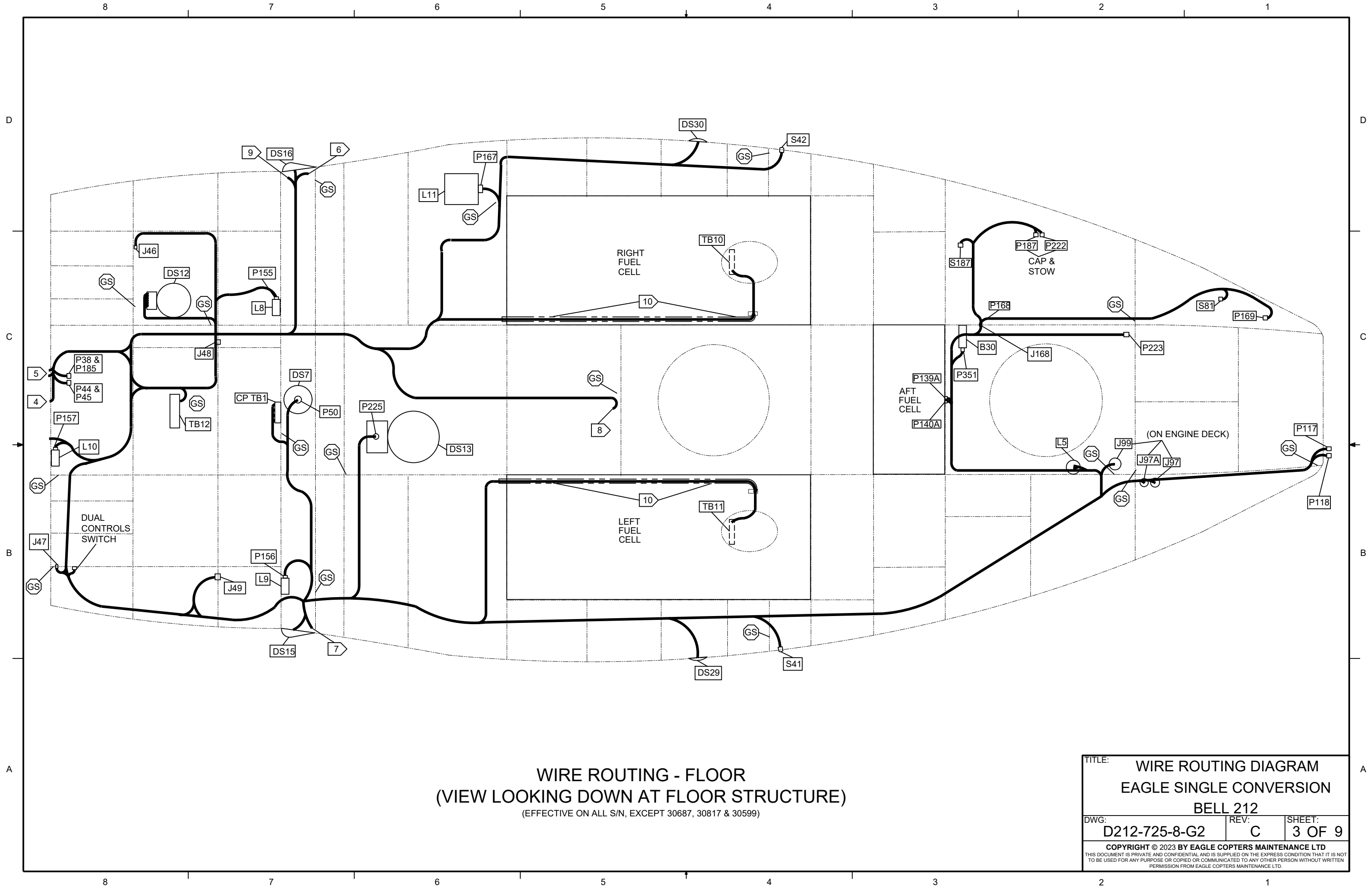
TITLE: WIRE ROUTING DIAGRAM EAGLE SINGLE CONVERSION BELL 212		DWG: D212-725-8-G2
REV: C	SHEET: 1 OF 9	

THIS DRAWING IS UNCONTROLLED UNLESS OPENED DIRECTLY FROM ECML'S CONTROLLED REPOSITORY



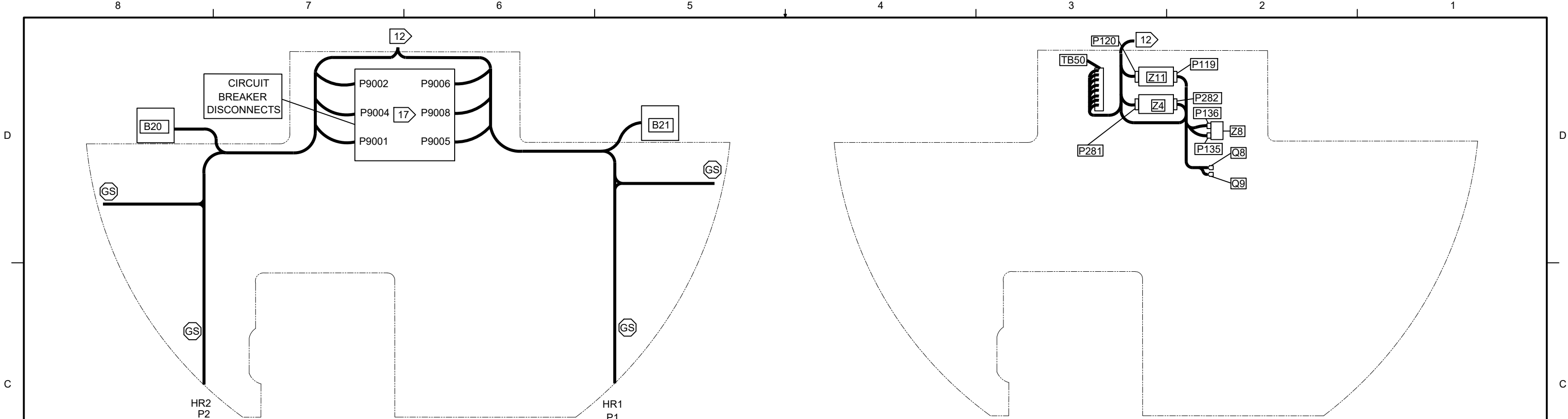
WIRE ROUTING - ROOF
(VIEW LOOKING UP AT LOWER ROOF STRUCTURE)
 (EFFECTIVE ON ALL S/N, EXCEPT 30687, 30817 & 30599)

TITLE: WIRE ROUTING DIAGRAM		
EAGLE SINGLE CONVERSION		
BELL 212		
DWG: D212-725-8-G2	REV: C	SHEET: 2 OF 9
<small> COPYRIGHT © 2023 BY EAGLE COPTERS MAINTENANCE LTD THIS DOCUMENT IS PRIVATE AND CONFIDENTIAL AND IS SUPPLIED ON THE EXPRESS CONDITION THAT IT IS NOT TO BE USED FOR ANY PURPOSE OR COPIED OR COMMUNICATED TO ANY OTHER PERSON WITHOUT WRITTEN PERMISSION FROM EAGLE COPTERS MAINTENANCE LTD. </small>		



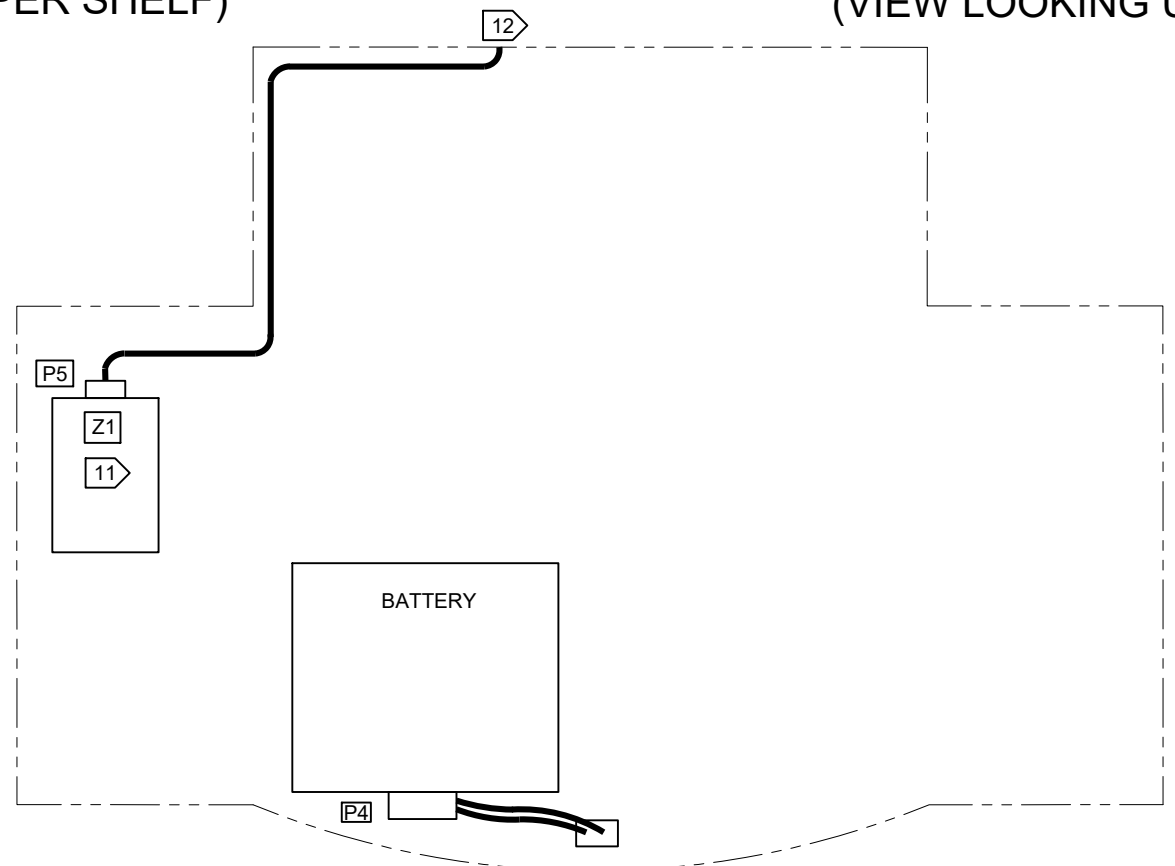
WIRE ROUTING - FLOOR
(VIEW LOOKING DOWN AT FLOOR STRUCTURE)
 (EFFECTIVE ON ALL S/N, EXCEPT 30687, 30817 & 30599)

TITLE: WIRE ROUTING DIAGRAM EAGLE SINGLE CONVERSION BELL 212		
DWG: D212-725-8-G2	REV: C	SHEET: 3 OF 9
COPYRIGHT © 2023 BY EAGLE COPTERS MAINTENANCE LTD THIS DOCUMENT IS PRIVATE AND CONFIDENTIAL AND IS SUPPLIED ON THE EXPRESS CONDITION THAT IT IS NOT TO BE USED FOR ANY PURPOSE OR COPIED OR COMMUNICATED TO ANY OTHER PERSON WITHOUT WRITTEN PERMISSION FROM EAGLE COPTERS MAINTENANCE LTD.		



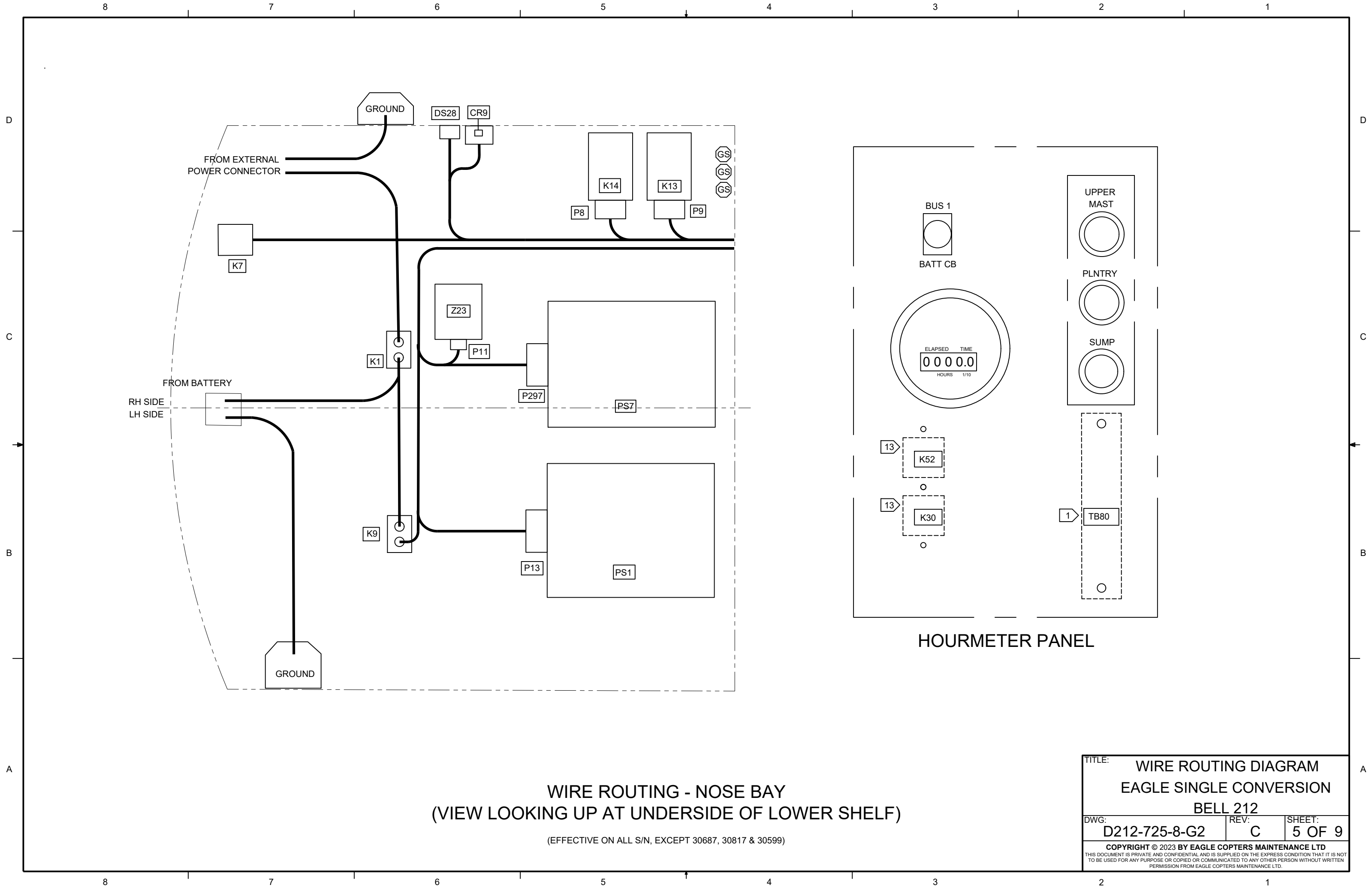
WIRE ROUTING - NOSE BAY
(VIEW LOOKING DOWN AT UPPER SHELF)

WIRE ROUTING - NOSE BAY
(VIEW LOOKING UP AT UNDERSIDE OF UPPER SHELF)



WIRE ROUTING - NOSE BAY
(VIEW LOOKING DOWN AT LOWER SHELF)
(EFFECTIVE ON ALL S/N, EXCEPT 30687, 30817 & 30599)

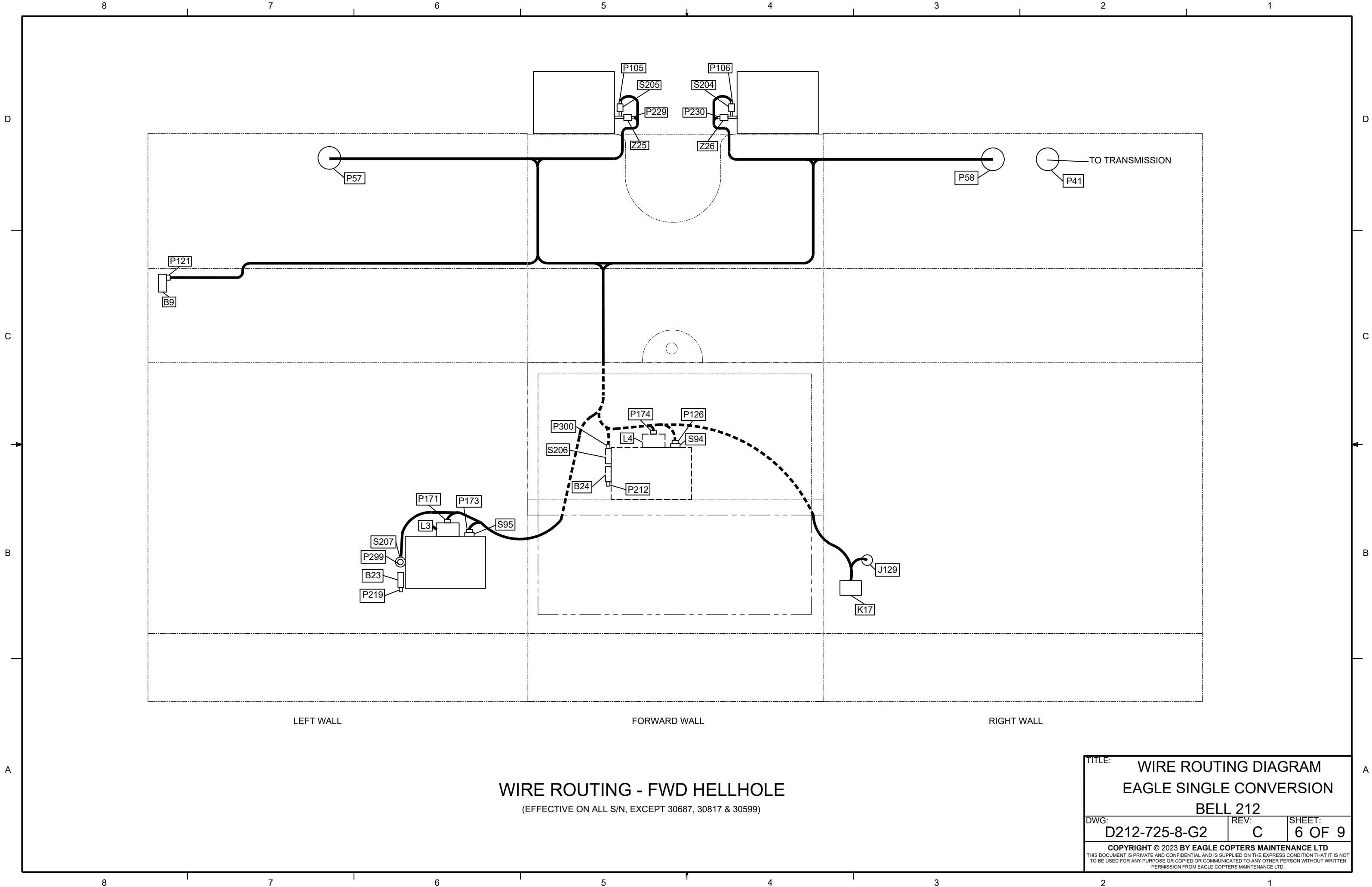
TITLE: WIRE ROUTING DIAGRAM EAGLE SINGLE CONVERSION BELL 212		
DWG: D212-725-8-G2	REV: C	SHEET: 4 OF 9
<small>COPYRIGHT © 2023 BY EAGLE COPTERS MAINTENANCE LTD THIS DOCUMENT IS PRIVATE AND CONFIDENTIAL AND IS SUPPLIED ON THE EXPRESS CONDITION THAT IT IS NOT TO BE USED FOR ANY PURPOSE OR COPIED OR COMMUNICATED TO ANY OTHER PERSON WITHOUT WRITTEN PERMISSION FROM EAGLE COPTERS MAINTENANCE LTD.</small>		



WIRE ROUTING - NOSE BAY
(VIEW LOOKING UP AT UNDERSIDE OF LOWER SHELF)

(EFFECTIVE ON ALL S/N, EXCEPT 30687, 30817 & 30599)

TITLE: WIRE ROUTING DIAGRAM		
EAGLE SINGLE CONVERSION		
BELL 212		
DWG: D212-725-8-G2	REV: C	SHEET: 5 OF 9
COPYRIGHT © 2023 BY EAGLE COPTERS MAINTENANCE LTD THIS DOCUMENT IS PRIVATE AND CONFIDENTIAL AND IS SUPPLIED ON THE EXPRESS CONDITION THAT IT IS NOT TO BE USED FOR ANY PURPOSE OR COPIED OR COMMUNICATED TO ANY OTHER PERSON WITHOUT WRITTEN PERMISSION FROM EAGLE COPTERS MAINTENANCE LTD.		



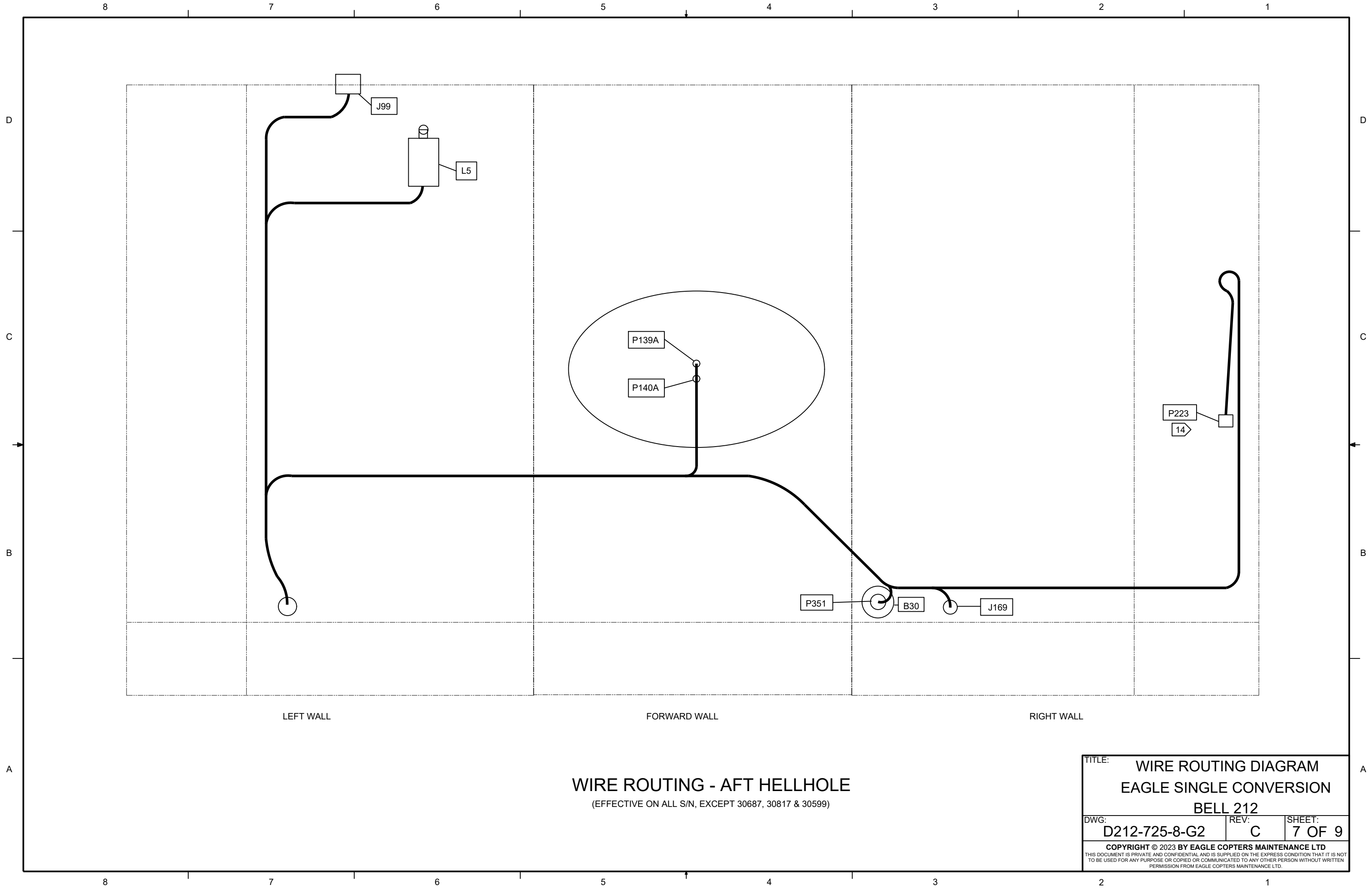
LEFT WALL

FORWARD WALL

RIGHT WALL

WIRE ROUTING - FWD HELLHOLE
 (EFFECTIVE ON ALL S/N, EXCEPT 30687, 30817 & 30599)

TITLE: WIRE ROUTING DIAGRAM		
EAGLE SINGLE CONVERSION		
BELL 212		
DWG: D212-725-8-G2	REV: C	SHEET: 6 OF 9
<small>COPYRIGHT © 2023 BY EAGLE COPTERS MAINTENANCE LTD THIS DOCUMENT IS PRIVATE AND CONFIDENTIAL AND IS SUPPLIED ON THE EXPRESS CONDITION THAT IT IS NOT TO BE USED FOR ANY PURPOSE OR COPIED OR COMMUNICATED TO ANY OTHER PERSON WITHOUT WRITTEN PERMISSION FROM EAGLE COPTERS MAINTENANCE LTD.</small>		



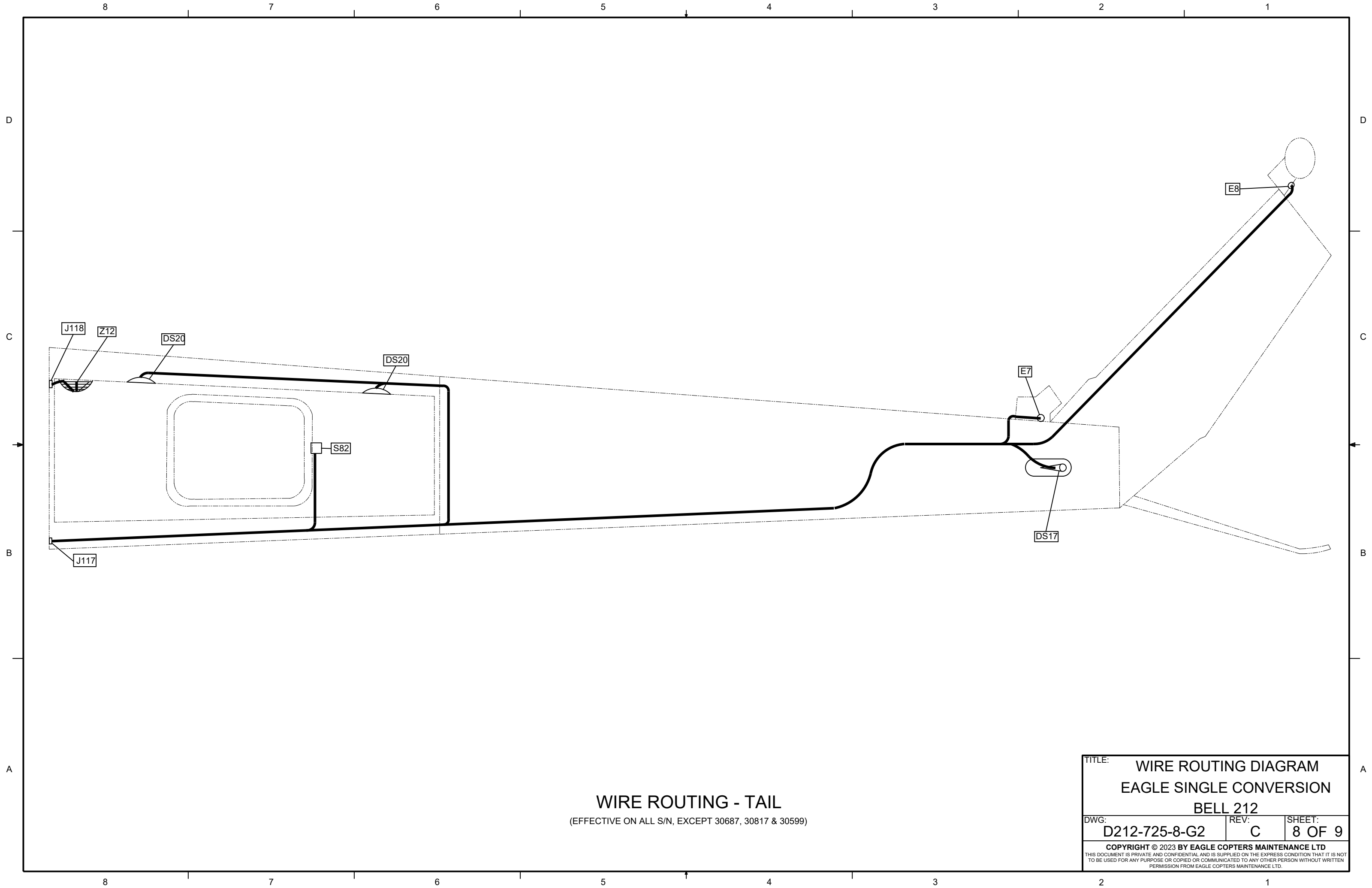
LEFT WALL

FORWARD WALL

RIGHT WALL

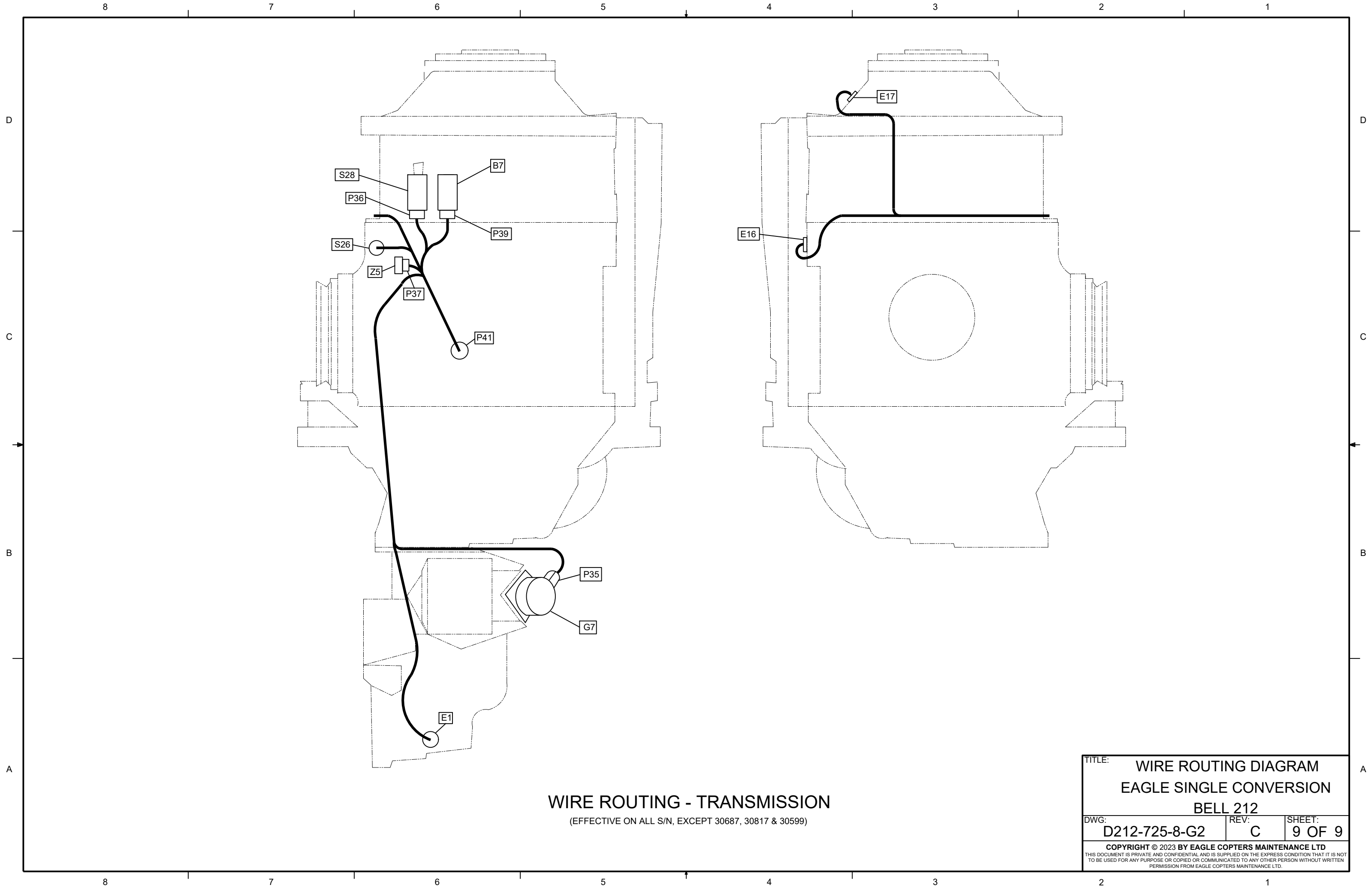
WIRE ROUTING - AFT HELLHOLE
 (EFFECTIVE ON ALL S/N, EXCEPT 30687, 30817 & 30599)

TITLE: WIRE ROUTING DIAGRAM		
EAGLE SINGLE CONVERSION		
BELL 212		
DWG: D212-725-8-G2	REV: C	SHEET: 7 OF 9
<small>COPYRIGHT © 2023 BY EAGLE COPTERS MAINTENANCE LTD THIS DOCUMENT IS PRIVATE AND CONFIDENTIAL AND IS SUPPLIED ON THE EXPRESS CONDITION THAT IT IS NOT TO BE USED FOR ANY PURPOSE OR COPIED OR COMMUNICATED TO ANY OTHER PERSON WITHOUT WRITTEN PERMISSION FROM EAGLE COPTERS MAINTENANCE LTD.</small>		



WIRE ROUTING - TAIL
 (EFFECTIVE ON ALL S/N, EXCEPT 30687, 30817 & 30599)

TITLE: WIRE ROUTING DIAGRAM		
EAGLE SINGLE CONVERSION		
BELL 212		
DWG: D212-725-8-G2	REV: C	SHEET: 8 OF 9
<small>COPYRIGHT © 2023 BY EAGLE COPTERS MAINTENANCE LTD THIS DOCUMENT IS PRIVATE AND CONFIDENTIAL AND IS SUPPLIED ON THE EXPRESS CONDITION THAT IT IS NOT TO BE USED FOR ANY PURPOSE OR COPIED OR COMMUNICATED TO ANY OTHER PERSON WITHOUT WRITTEN PERMISSION FROM EAGLE COPTERS MAINTENANCE LTD.</small>		



WIRE ROUTING - TRANSMISSION

(EFFECTIVE ON ALL S/N, EXCEPT 30687, 30817 & 30599)

TITLE:		
WIRE ROUTING DIAGRAM EAGLE SINGLE CONVERSION BELL 212		
DWG:	REV:	SHEET:
D212-725-8-G2	C	9 OF 9
<small>COPYRIGHT © 2023 BY EAGLE COPTERS MAINTENANCE LTD THIS DOCUMENT IS PRIVATE AND CONFIDENTIAL AND IS SUPPLIED ON THE EXPRESS CONDITION THAT IT IS NOT TO BE USED FOR ANY PURPOSE OR COPIED OR COMMUNICATED TO ANY OTHER PERSON WITHOUT WRITTEN PERMISSION FROM EAGLE COPTERS MAINTENANCE LTD.</small>		