

REV	DESCRIPTION	DATE
A	INITIAL RELEASE	09-09-2021
B	REVISED TO GSU 75H AND ITEM 13 P/N.	30-11-2021
C	CREATED -013 CONFIG WITHOUT DME AND WITH OAT PROBE DISCONNECT. UPDATED BOM.	16-12-2022
D	INCORPORATED ECN-212-005 REV A. ADDED -015 CONFIGURATION.	12-02-2024

QTY	QTY	QTY	ITEM	PART NUMBER	DESCRIPTION	REMARKS
2	2	--	46	011-04205-00	CONNECTOR KIT	GARMIN
2	2	--	45	011-04201-00	GMU 44B MAGNETOMETER	GARMIN
8	8	--	44	60617-1	SOCKETS 24/18 BRASS/TIN	EDMO
2	2	--	43	1-480424-0	MATE'N'LOCK 4 SOCKET CONNECTOR	EDMO
8	8	--	42	60618-1	PINS 24/18 BRASS/TIN	EDMO
2	2	--	41	1-480426-0	MATE'N'LOCK 4 PIN CONNECTOR	EDMO
1	1	1	40	010-01476-47	HSVT ENABLEMENT SD CARD	GARMIN
1	1	1	39	010-03716-4J	METRIC PFD ENABLEMENT SD CARD	GARMIN
1	1	1	38	010-01477-4A	RAD ALT ENABLEMENT SD CARD	GARMIN
1	1	1	37	010-03716-33	HELICOPTER ENABLEMENT SD CARD	GARMIN
1	1	1	36	010-00769-60	INSTALLER ENABLEMENT SD CARD	GARMIN
1	1	1	35	MS3476W12-10PW	CONNECTOR, PLUG	MIL SPEC
AR (20)	AR (20)	AR (20)	34	M39029/5-115	CONTACT, SOCKET	MIL SPEC
1	1	1	33	MS3474W12-10S	CONNECTOR, JACK	MIL SPEC
AR (20)	AR (20)	AR (20)	32	M39029/4-110	CONTACT, PIN	MIL SPEC
-015 QTY	-013 QTY	-011 QTY	ITEM	PART NUMBER	DESCRIPTION	REMARKS

BILL OF MATERIALS

1	1	1	31	MS3476W12-10P	CONNECTOR, PLUG	MIL SPEC
1	1	1	30	M39029/32-247	CONTACT, SOCKET	MIL SPEC
1	1	1	29	M39029/31-228	CONTACT, PIN	MIL SPEC
1	1	1	28	M39029/32-259	CONTACT, SOCKET	MIL SPEC
1	1	1	27	M39029/31-240	CONTACT, PIN	MIL SPEC
AR	AR	AR	26	392404	CABLE, ETHERNET	CARLISLE
2	2	2	25	010-03716-20	DATABASE SD CARD	GARMIN
2	2	2	24	011-00978-00	OAT PROBE, KIT	GARMIN
16	--	--	23	M39029/63-368	CONTACT, PIN	GARMIN
16	--	--	22	330-90005-01	BACKSHELL	GARMIN
16	--	--	21	330-00360-00	CONNECTOR, PLUG	GARMIN
1	1	1	20	MS3474W12-10SW	CONNECTOR, JACK	MIL SPEC
--	--	--	19	011-00870-10	GMU 44 MAGNETOMETER	GARMIN
2	2	2	18	011-00979-20	CONFIGURATION MODULE	GARMIN
15	2	2	17	011-01855-04	BACKSHELL	GARMIN
15	2	2	16	330-00776-78	CONNECTOR, PLUG	GARMIN
15	AR (154)	AR (154)	15	M39029/58-360	CONTACT, PIN	MIL SPEC
2	2	2	14	MS22073-3	CIRCUIT BREAKER, 3A	MIL SPEC
2	2	2	13	011-03094-20	GSU 75H	GARMIN
14	2	2	12	011-04038-00	CONFIGURATION MODULE	GARMIN
13	2	2	11	011-01855-04	BACKSHELL	GARMIN
13	2	2	10	011-01855-03	BACKSHELL	GARMIN
13	2	2	9	011-01855-02	BACKSHELL	GARMIN
13	2	2	8	011-01855-01	BACKSHELL	GARMIN
13	AR (250)	AR (250)	7	336-00021-00	CONTACT, PIN	GARMIN
13	2	2	6	330-00366-78	CONNECTOR, PLUG	GARMIN
13	2	2	5	330-00366-62	CONNECTOR, PLUG	GARMIN
13	2	2	4	330-00366-44	CONNECTOR, PLUG	GARMIN
13	2	2	3	330-00366-26	CONNECTOR, PLUG	GARMIN
2	2	2	2	MS22073-5	CIRCUIT BREAKER, 5A	MIL SPEC
2	2	2	1	011-03308-20	GDU 1060	GARMIN
				-015	CONFIGURATION	
				-013	CONFIGURATION	
				-011	CONFIGURATION	
-015 QTY	-013 QTY	-011 QTY	ITEM	PART NUMBER	DESCRIPTION	REMARKS

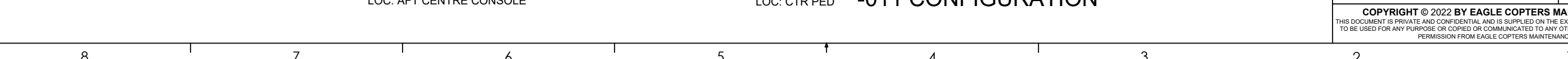
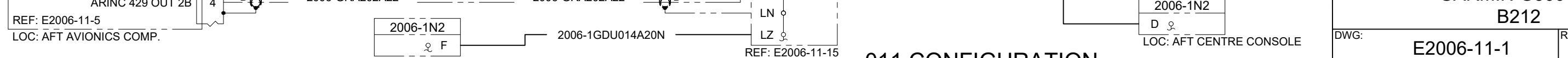
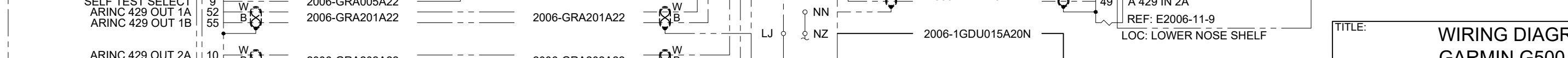
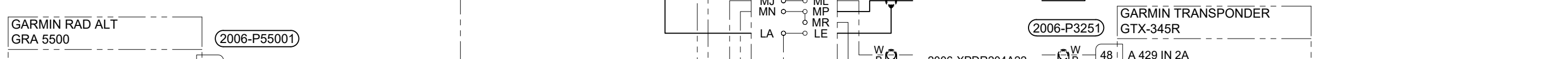
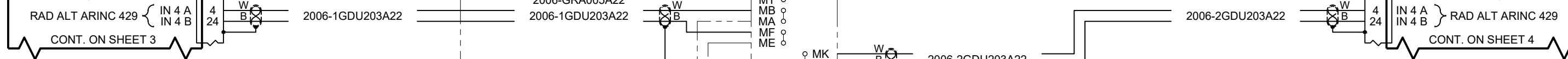
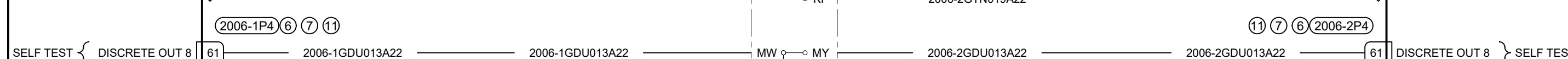
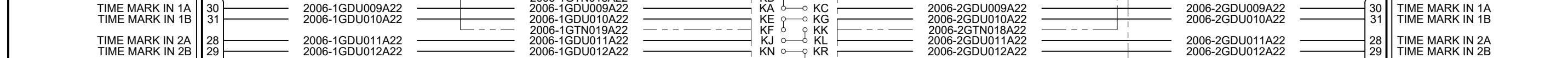
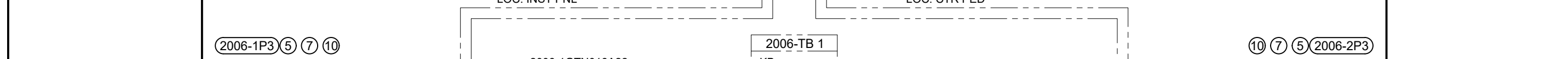
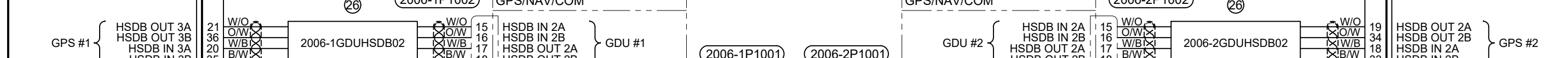
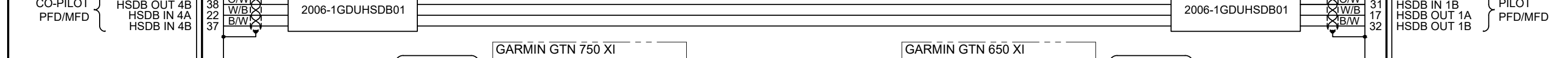
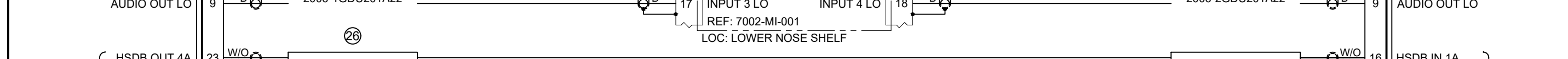
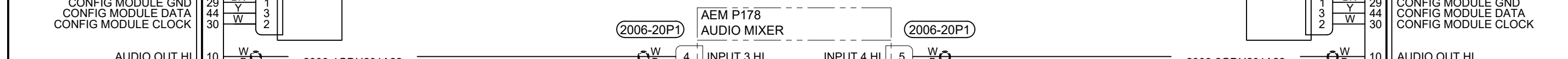
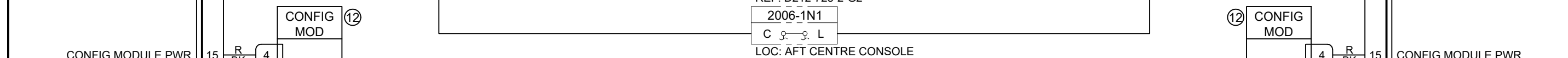
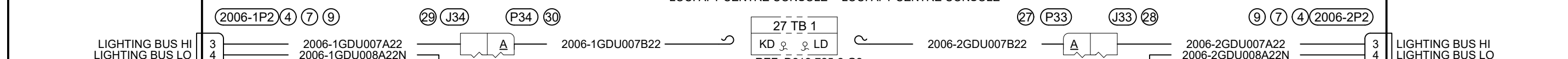
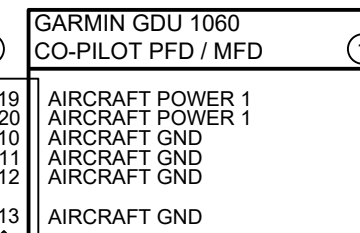
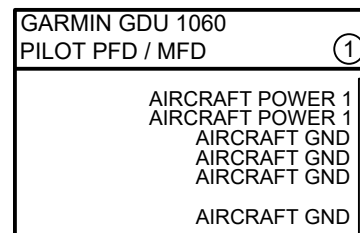
BILL OF MATERIALS

NOTES:
 _____ NEW WIRE / UNIT
 - - - - - EXISTING WIRE / UNIT

- PERFORM ALL WORK IN ACCORDANCE WITH BELL HELICOPTER STANDARD PRACTICES MANUAL BHT-ELEC-SPM.
- ALL NEW UNSHIELDED WIRE USE M22759/41-(XX)-9 OR EQUIVALENT TYPE WIRE. (M22759/41-(XX)-9 IS NOT INTENDED TO BE USED IN SOLDER APPLICATIONS, SOLDERABILITY CAN BE ACHIEVED WITH THE PROPER SOLDER. USE CRIMP SPLICES FOR REPAIR). ALL WIRES 22 AWG UNLESS OTHERWISE SPECIFIED BY WIRE CODE. ALL JUMPERS TO BE LESS THAN 6 INCHES.
- ALL NEW SHIELDED WIRE USE M27500-(XX)SM(X)N23 OR EQUIVALENT TYPE WIRE. (M27500-(XX)SM(X)N23 IS NOT INTENDED TO BE USED IN SOLDER APPLICATIONS, SOLDERABILITY CAN BE ACHIEVED WITH THE PROPER SOLDER. USE CRIMP SPLICES FOR REPAIR). SOLDER SLEEVES SHALL USE SN96 SOLDER, USE P/N S200-X-00 OR EQUIVALENT.
- ALL SHIELD TERMINATIONS SHALL BE INSTALLED PER MIL-S-83519 OR EQUIVALENT. SHIELD TERMINATIONS SHOWN AS "DAISY-CHAINED" ARE FOR DRAWING CLARITY ONLY. INDIVIDUAL SHIELD EXTENSIONS SHALL BE SPLICED AT A COMMON TIE POINT TO THE TERMINATING WIRES. THE BACK SHELL OR AIRFRAME GROUND MAY BE USED.
- ALL AIRFRAME GROUNDS SHALL BE VIA AMP LUG OR GROUNDING BLOCK AND PROVIDE SEPARATE GROUND STUD LOCATIONS FOR DC POWER GROUNDS, AC POWER GROUNDS, CHASSIS GROUNDS, SIGNAL GROUNDS AND SHIELD GROUNDS.
- ALL EQUIPMENT BONDING TO ADJACENT AIRFRAME STRUCTURE TO BE 0.003 OHM OR LESS. ALL ELECTRICAL GROUNDING AND BONDING TO BE INSTALLED IN ACCORDANCE WITH THE LATEST REVISION OF BHT-ELEC-SPM CHAPTER 8.
- ALL TERMINALS TO BE INSTALLED IN ACCORDANCE WITH THE LATEST REVISION OF BHT-ELEC-SPM CHAPTER 4 PARAGRAPH 4-9.
- ALL CONNECTORS TO BE INSTALLED IN ACCORDANCE WITH THE LATEST REVISION OF BHT-ELEC-SPM CHAPTER 5 AND / OR CIRCULAR CONNECTOR INSTALLATION INSTRUCTIONS (GARMIN DOCUMENT 190-00313-12). ENSURE ALL UNUSED CONNECTOR CONTACTS ARE FILLED WITH SPARE PINS/SOCKETS OR PLASTIC GROMMET SEALING PLUGS. ENSURE ALL BULKHEAD MOUNTED CONNECTORS ARE PROPERLY BONDED TO AIRFRAME.
- ENSURE ALL SWITCHES, CIRCUIT BREAKERS, AND REMOTE MOUNTED BOXES ARE LABELED WITH A CONSISTENT SIZE, FONT, COLOR, BACKGROUND AND ARE ILLUMINATED CONSISTENT AS EXISTING LABELS.
- ROUTE ALL WIRES AND CABLES WITH EXISTING WIRE ROUTES WHERE POSSIBLE AND CLAMP IN ACCORDANCE WITH THE LATEST REVISION OF BHT-ELEC-SPM CHAPTER 6. WIRES MUST BE ROUTED WITH A MINIMUM OF 7 INCHES OF SEPARATION FROM OXYGEN AND FLUID LINES (MIN 2 INCHES IF WIRES IN CONDUIT).
- INSTALL SYSTEM IN ACCORDANCE WITH THE LATEST REVISION OF THE MANUFACTURERS INSTALLATION MANUAL.
- LOWERCASE LETTER CONNECTOR PIN DESIGNATORS ARE SHOWN AS UNDERLINED UPPER CASE LETTERS.
- INCLUDED IN KIT PN: 011-03527-00.
- INCLUDED IN KIT PN: 011-04038-00.
- INCLUDED IN KIT PN: 011-03109-00.
- INCLUDED IN KIT PN: 011-00871-00.
- POWER WIRES NOT TO EXCEED 20 FT.
- POWER WIRES NOT TO EXCEED 30 FT.
- INCLUDED IN KIT PN 011-04201-00.

PREPARED	<i>NF</i>	 <p align="center">COPYRIGHT © 2022 BY EAGLE COPTERS MAINTENANCE LTD THIS DOCUMENT IS PRIVATE AND CONFIDENTIAL AND IS SUPPLIED ON THE EXPRESS CONDITION THAT IT IS NOT TO BE USED FOR ANY PURPOSE OR COPIED OR COMMUNICATED TO ANY OTHER PERSON WITHOUT WRITTEN PERMISSION FROM EAGLE COPTERS MAINTENANCE LTD.</p>
REVIEWED	<i>CP</i>	
RELEASED	<i>JP</i>	
SCALE:	NTS	
TITLE:	WIRING DIAGRAM GARMIN G500 TXI B212	
REV:	D	DWG: E2006-11-1
SHEET:	1 OF 12	

THIS DRAWING IS UNCONTROLLED UNLESS OPENED DIRECTLY FROM ECML'S CONTROLLED REPOSITORY



TITLE: **WIRING DIAGRAM
GARMIN G500 TXI
B212**

DWG: **E2006-11-1** REV: **D** SHEET: **2 OF 12**

COPYRIGHT © 2022 BY EAGLE COPTERS MAINTENANCE LTD
THIS DOCUMENT IS PRIVATE AND CONFIDENTIAL AND IS SUPPLIED ON THE EXPRESS CONDITION THAT IT IS NOT
TO BE USED FOR ANY PURPOSE OR COPIED OR COMMUNICATED TO ANY OTHER PERSON WITHOUT WRITTEN
PERMISSION FROM EAGLE COPTERS MAINTENANCE LTD.

-011 CONFIGURATION

GARMIN ADAHRS
PILOT GSU 75H (13)

(2006-1P751) (15) (16) (17)

(18) PILOT (14)

3A AVIONICS BUSS
ADAHRS REF: D212-725-2-G2

2006-1N3
G ♂
LOC: AFT CENTRE CONSOLE

(18) CONFIG MOD
BK 1
R 4
Y 3
W 2

AIRCRAFT POWER 1
AIRCRAFT POWER 2
POWER GROUND
POWER GROUND

CONFIG MODULE GROUND
CONFIG MODULE POWER OUT
CONFIG MODULE DATA
CONFIG MODULE CLOCK

RS-232 OUT AHRS 3
MAGNETOMETER POWER OUT
MAGNETOMETER GROUND

SYSTEM ID 1*
SIGNAL GROUND

OAT POWER
OAT HI
OAT LO

RS-232 OUT ADC 2
RS-232 ADC 2 GROUND

ARINC 429 OUT ADAHRS 1A
ARINC 429 OUT ADAHRS 1B

RS-232 OUT ADC 1
RS-232 IN ADC 1
RS-232 ADC 1 GROUND

RS-232 OUT AHRS 1
RS-232 IN AHRS 1
RS-232 AHRS 1 GROUND

ARINC 429 OUT 3A
ARINC 429 OUT 3B

ARINC 429 OUT ADAHRS 2A
ARINC 429 OUT ADAHRS 2B

LOC: UPPER NOSE SHELF

2006-1ADHRS001A20
2006-1ADHRS003A20N

74 BK 1
53 R 4
54 Y 3
55 W 2

10 W 1
11 B 2
12 W 1
13 B 2
33 O 1
33 O 2

6 W 1
5 B 2
4 O 1
4 O 2

17 W 1
37 B 2

27 W 1
7 B 2

69 W 1
70 B 2
68 O 1
68 O 2

51 W 1
52 B 2
32 O 1
32 O 2

8 W 1
9 B 2

49 W 1
50 B 2

(32) (35) 2006-8P1

2006-8J1 (20) (34)

A B C
D E F G
LOC: TAILBOOM

2006-1ADHRS302A22

2006-1ADHRS302A22

(2006-P3251)

GARMIN TRANSPONDER
GTX 345R
RS-232 IN 1
RS-232 GROUND 1
REF: E2006-11-9
LOC: LOWER NOSE SHELF

2006-XPDR202A22

2006-1GDU202A22

2006-1GDU202A22

2006-1GDU301A22

2006-1GDU301A22

2006-1GDU302A22

2006-1GDU302A22

2006-DME301A22

2006-DME301A22

(2006-P431)

GARMIN GAD 43E
DME INTERFACE
RS 232 IN
RS 232 OUT
RS 232 GROUND
ARINC 429 IN 3A
ARINC 429 IN 3B
REF: E2006-11-7
LOC: LOWER NOSE SHELF

2006-DME301A22

2006-DME202A22

2006-2SAM203A22

2006-2SAM203A22

(2006-1P4)

CONT. FROM SHEET 3
GARMIN GDU 1060
PILOT PFD / MFD
1 ARINC 429 IN 1A
21 ARINC 429 IN 1B
19 RS-232 IN 5
20 RS-232 OUT 5
18 RS-232 GND 5
16 RS-232 IN 6
17 RS-232 OUT 6
15 RS-232 GND 6
14 RS 232 OUT 7
13 RS 232 IN 7
12 RS 232 GROUND 7
LOC: INST PNL

(2006-6P1)

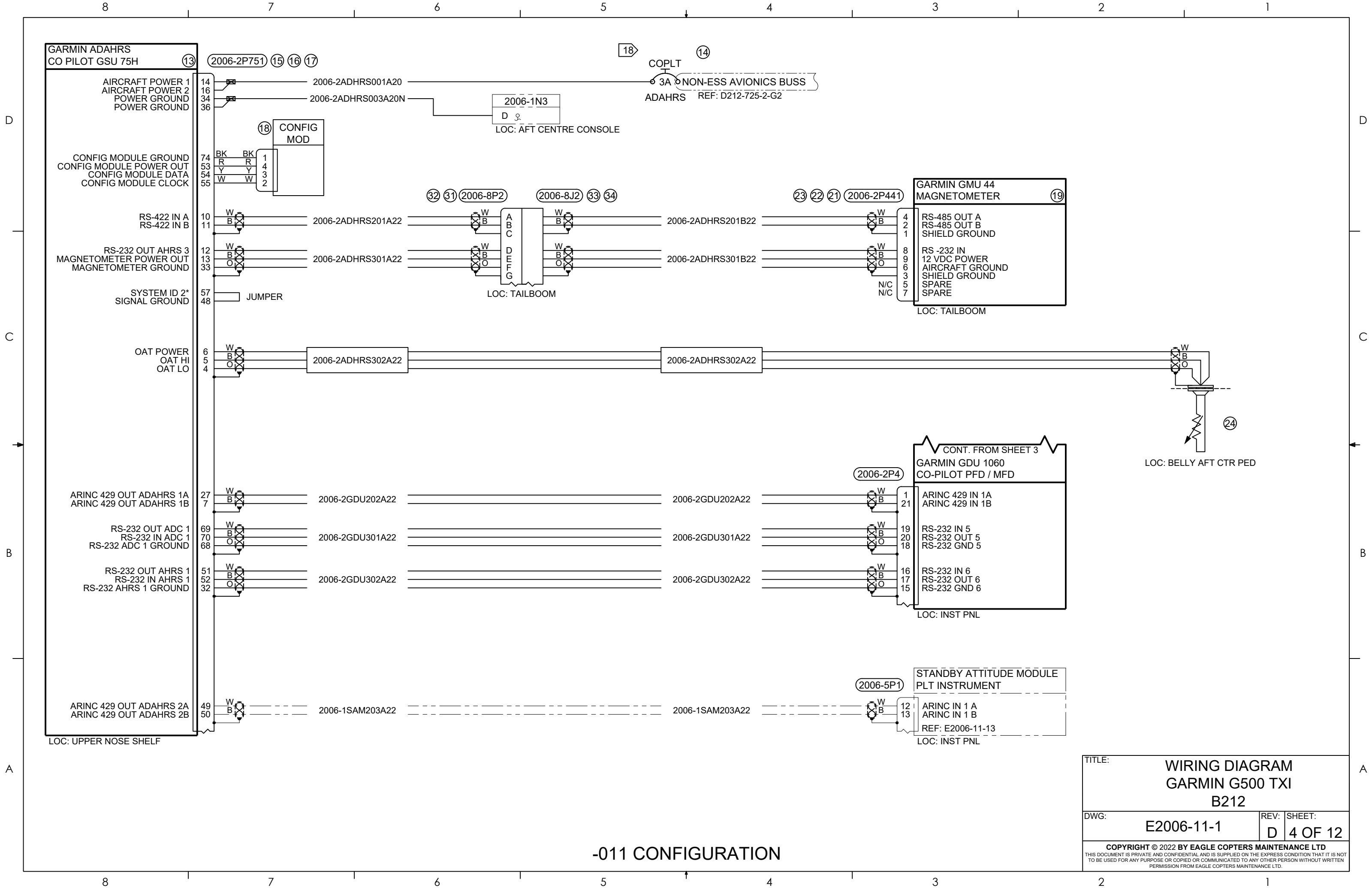
STANDBY ATTITUDE MODULE
COPILOT INSTRUMENT
12 ARINC IN 1 A
13 ARINC IN 1 B
REF: E2006-11-13
LOC: INST PNL

GARMIN GMU 44
MAGNETOMETER (19)
4 RS-485 OUT A
2 RS-485 OUT B
1 SHIELD GROUND
8 RS-232 IN
9 12 VDC POWER
6 AIRCRAFT GROUND
3 SHIELD GROUND
5 SPARE
7 SPARE
LOC: TAILBOOM

LOC: BELLY AFT CTR PED

-011 CONFIGURATION

TITLE:		WIRING DIAGRAM GARMIN G500 TXI B212	
DWG:	E2006-11-1	REV:	D
SHEET:		3 OF 12	
<small>COPYRIGHT © 2022 BY EAGLE COPTERS MAINTENANCE LTD THIS DOCUMENT IS PRIVATE AND CONFIDENTIAL AND IS SUPPLIED ON THE EXPRESS CONDITION THAT IT IS NOT TO BE USED FOR ANY PURPOSE OR COPIED OR COMMUNICATED TO ANY OTHER PERSON WITHOUT WRITTEN PERMISSION FROM EAGLE COPTERS MAINTENANCE LTD.</small>			



GARMIN ADAHRS
CO PILOT GSU 75H (13)

AIRCRAFT POWER 1
AIRCRAFT POWER 2
POWER GROUND
POWER GROUND

CONFIG MODULE GROUND
CONFIG MODULE POWER OUT
CONFIG MODULE DATA
CONFIG MODULE CLOCK

RS-422 IN A
RS-422 IN B

RS-232 OUT AHRS 3
MAGNETOMETER POWER OUT
MAGNETOMETER GROUND

SYSTEM ID 2*
SIGNAL GROUND

OAT POWER
OAT HI
OAT LO

ARINC 429 OUT ADAHRS 1A
ARINC 429 OUT ADAHRS 1B

RS-232 OUT ADC 1
RS-232 IN ADC 1
RS-232 ADC 1 GROUND

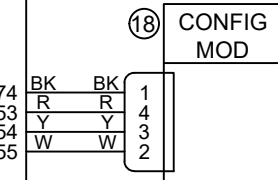
RS-232 OUT AHRS 1
RS-232 IN AHRS 1
RS-232 AHRS 1 GROUND

ARINC 429 OUT ADAHRS 2A
ARINC 429 OUT ADAHRS 2B

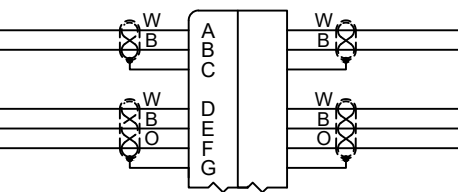
LOC: UPPER NOSE SHELF

2006-2P751 (15) (16) (17)

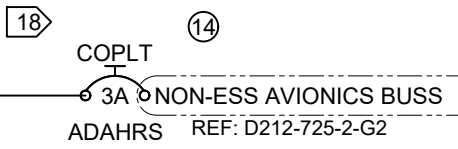
2006-2ADHRS001A20
2006-2ADHRS003A20N



2006-8P2 (32) (31)



LOC: TAILBOOM



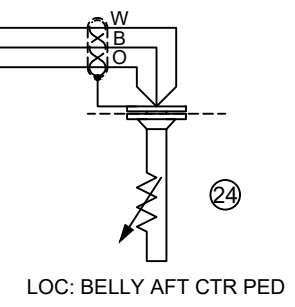
GARMIN GMU 44
MAGNETOMETER (19)

RS-485 OUT A
RS-485 OUT B
SHIELD GROUND
RS-232 IN
12 VDC POWER
AIRCRAFT GROUND
SHIELD GROUND
SPARE
SPARE

LOC: TAILBOOM

2006-2ADHRS302A22

2006-2ADHRS302A22



LOC: BELLY AFT CTR PED

CONT. FROM SHEET 3
GARMIN GDU 1060
CO-PILOT PFD / MFD

ARINC 429 IN 1A
ARINC 429 IN 1B
RS-232 IN 5
RS-232 OUT 5
RS-232 GND 5
RS-232 IN 6
RS-232 OUT 6
RS-232 GND 6

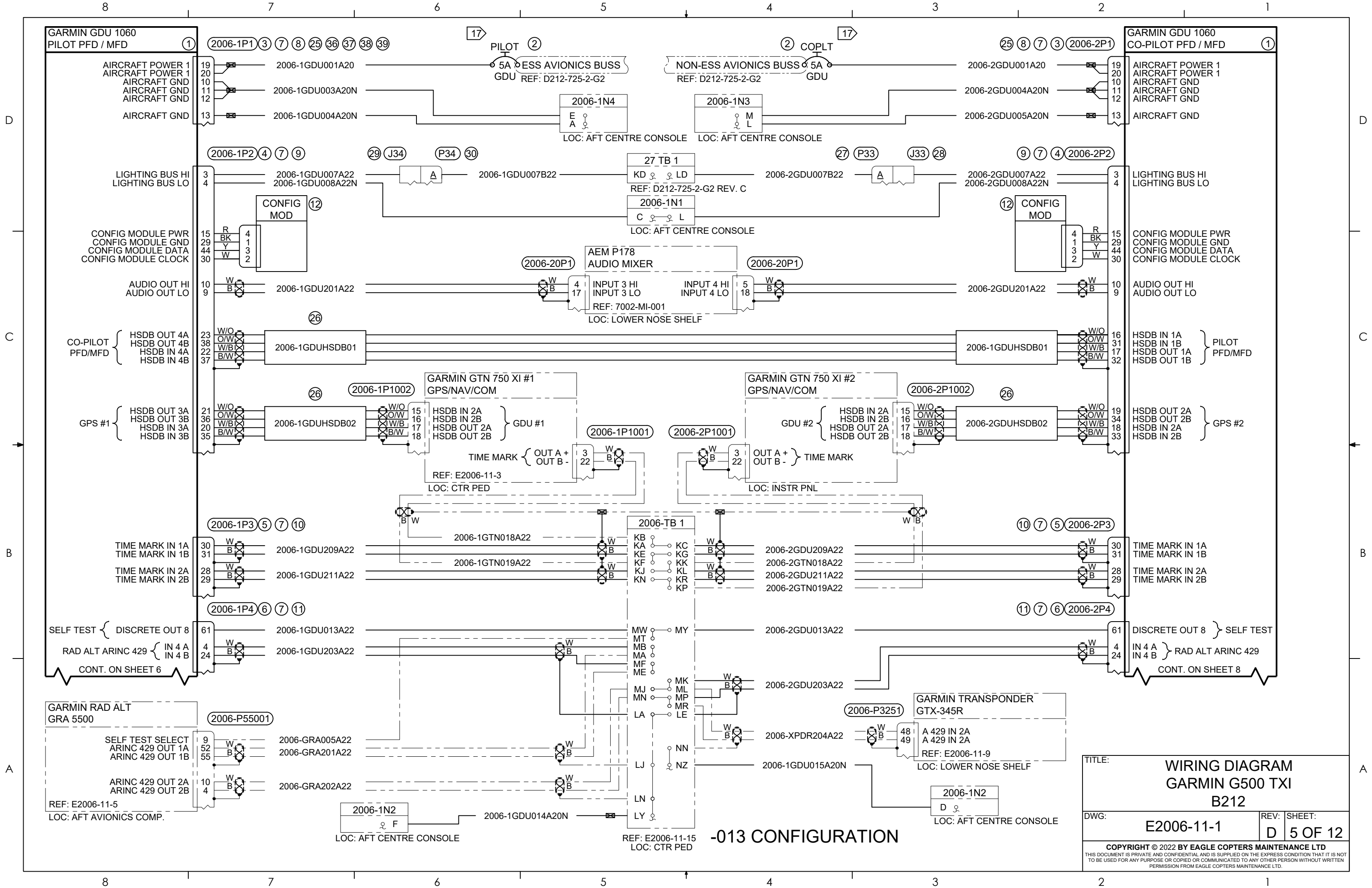
LOC: INST PNL

STANDBY ATTITUDE MODULE
PLT INSTRUMENT

ARINC IN 1 A
ARINC IN 1 B
REF: E2006-11-13
LOC: INST PNL

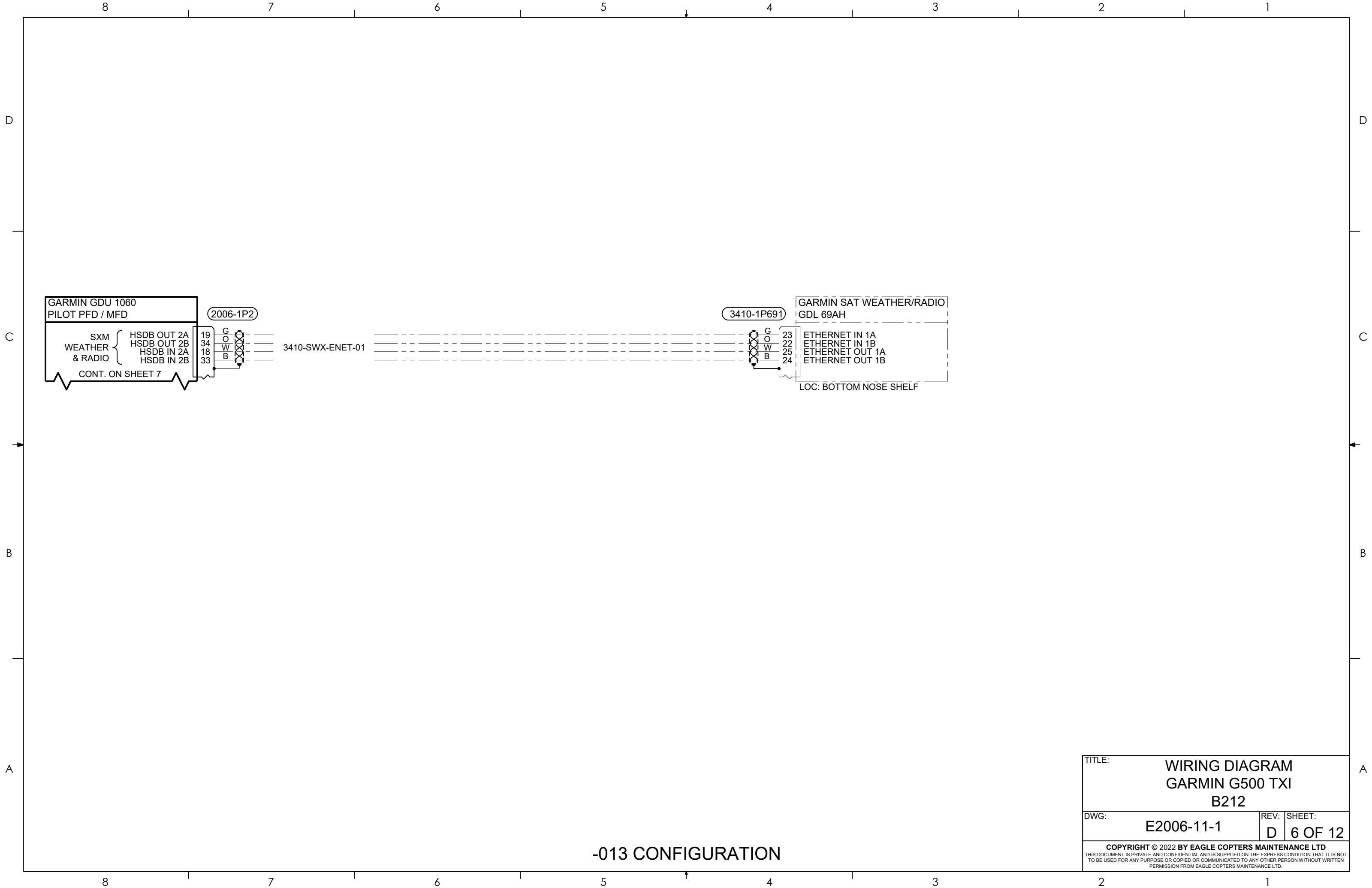
-011 CONFIGURATION

TITLE:		WIRING DIAGRAM GARMIN G500 TXI B212	
DWG:	E2006-11-1	REV:	D
SHEET:		4 OF 12	
<small>COPYRIGHT © 2022 BY EAGLE COPTERS MAINTENANCE LTD THIS DOCUMENT IS PRIVATE AND CONFIDENTIAL AND IS SUPPLIED ON THE EXPRESS CONDITION THAT IT IS NOT TO BE USED FOR ANY PURPOSE OR COPIED OR COMMUNICATED TO ANY OTHER PERSON WITHOUT WRITTEN PERMISSION FROM EAGLE COPTERS MAINTENANCE LTD.</small>			



-013 CONFIGURATION

TITLE:		WIRING DIAGRAM GARMIN G500 TXI B212	
DWG:	E2006-11-1	REV:	D
SHEET:		5 OF 12	
<small>COPYRIGHT © 2022 BY EAGLE COPTERS MAINTENANCE LTD THIS DOCUMENT IS PRIVATE AND CONFIDENTIAL AND IS SUPPLIED ON THE EXPRESS CONDITION THAT IT IS NOT TO BE USED FOR ANY PURPOSE OR COPIED OR COMMUNICATED TO ANY OTHER PERSON WITHOUT WRITTEN PERMISSION FROM EAGLE COPTERS MAINTENANCE LTD.</small>			



GARMIN GDU 1060
PILOT PFD / MFD

SXM
WEATHER
& RADIO

HSDB OUT 2A
HSDB OUT 2B
HSDB IN 2A
HSDB IN 2B

CONT. ON SHEET 7

2006-1P2

3410-SWX-ENET-01

3410-1P691

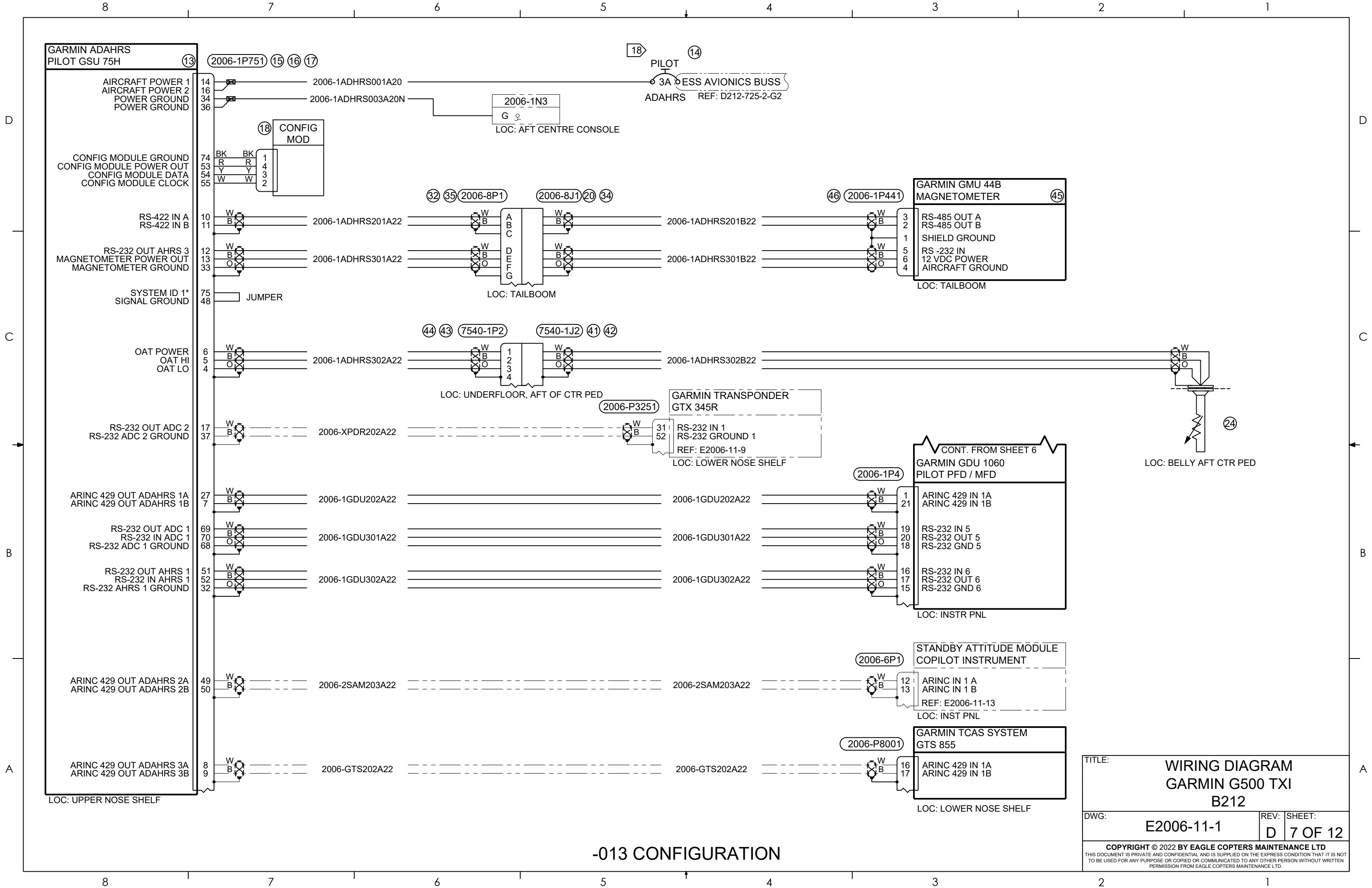
GARMIN SAT WEATHER/RADIO
GDL 69AH

ETHERNET IN 1A
ETHERNET IN 1B
ETHERNET OUT 1A
ETHERNET OUT 1B

LOC: BOTTOM NOSE SHELF

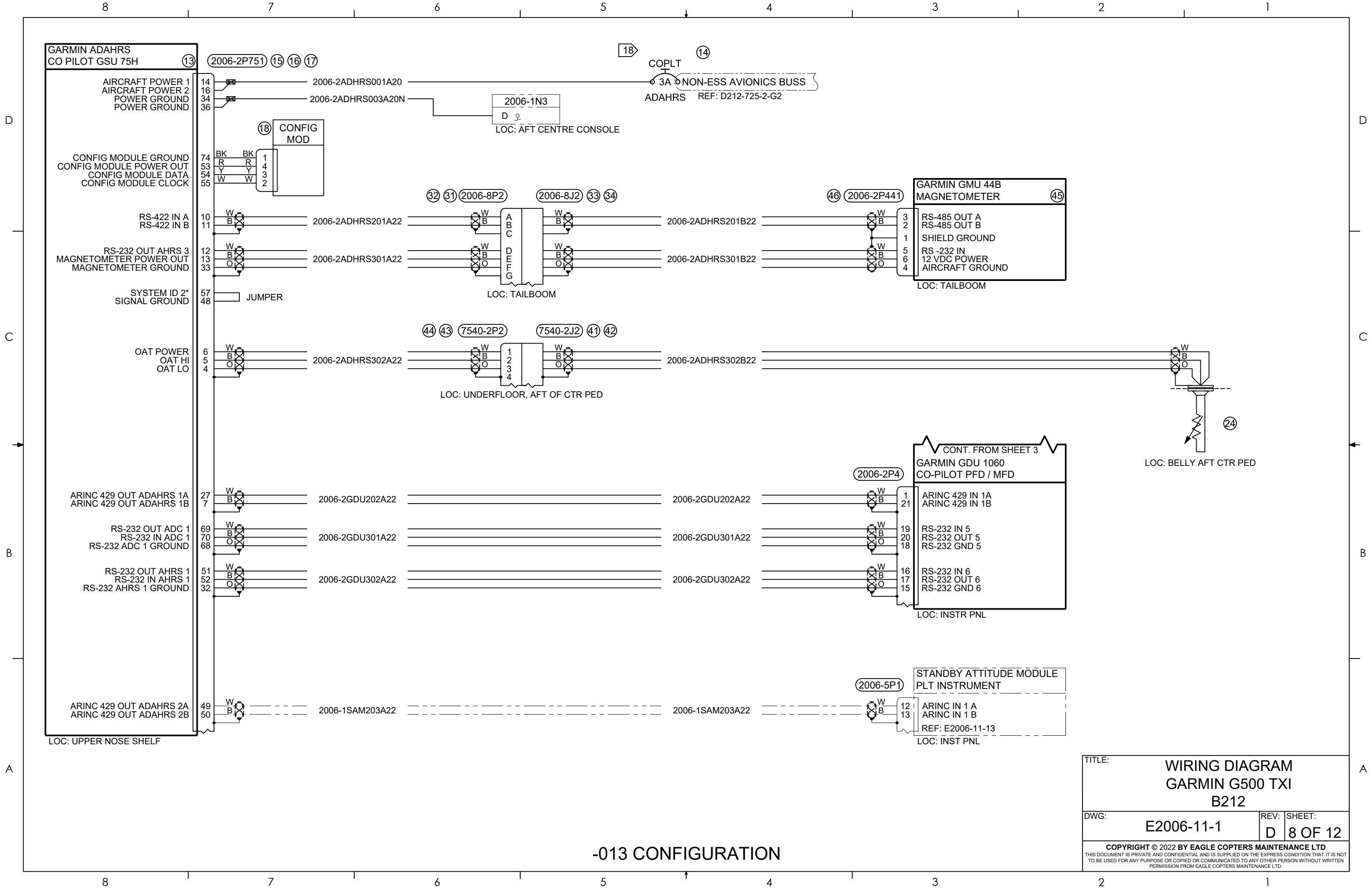
TITLE:			WIRING DIAGRAM GARMIN G500 TXI B212		
DWG:	E2006-11-1	REV:	D	SHEET:	6 OF 12
<small>COPYRIGHT © 2022 BY EAGLE COPTERS MAINTENANCE LTD THIS DOCUMENT IS PRIVATE AND CONFIDENTIAL AND IS SUPPLIED ON THE EXPRESS CONDITION THAT IT IS NOT TO BE USED FOR ANY PURPOSE OR COPIED OR COMMUNICATED TO ANY OTHER PERSON WITHOUT WRITTEN PERMISSION FROM EAGLE COPTERS MAINTENANCE LTD.</small>					

-013 CONFIGURATION



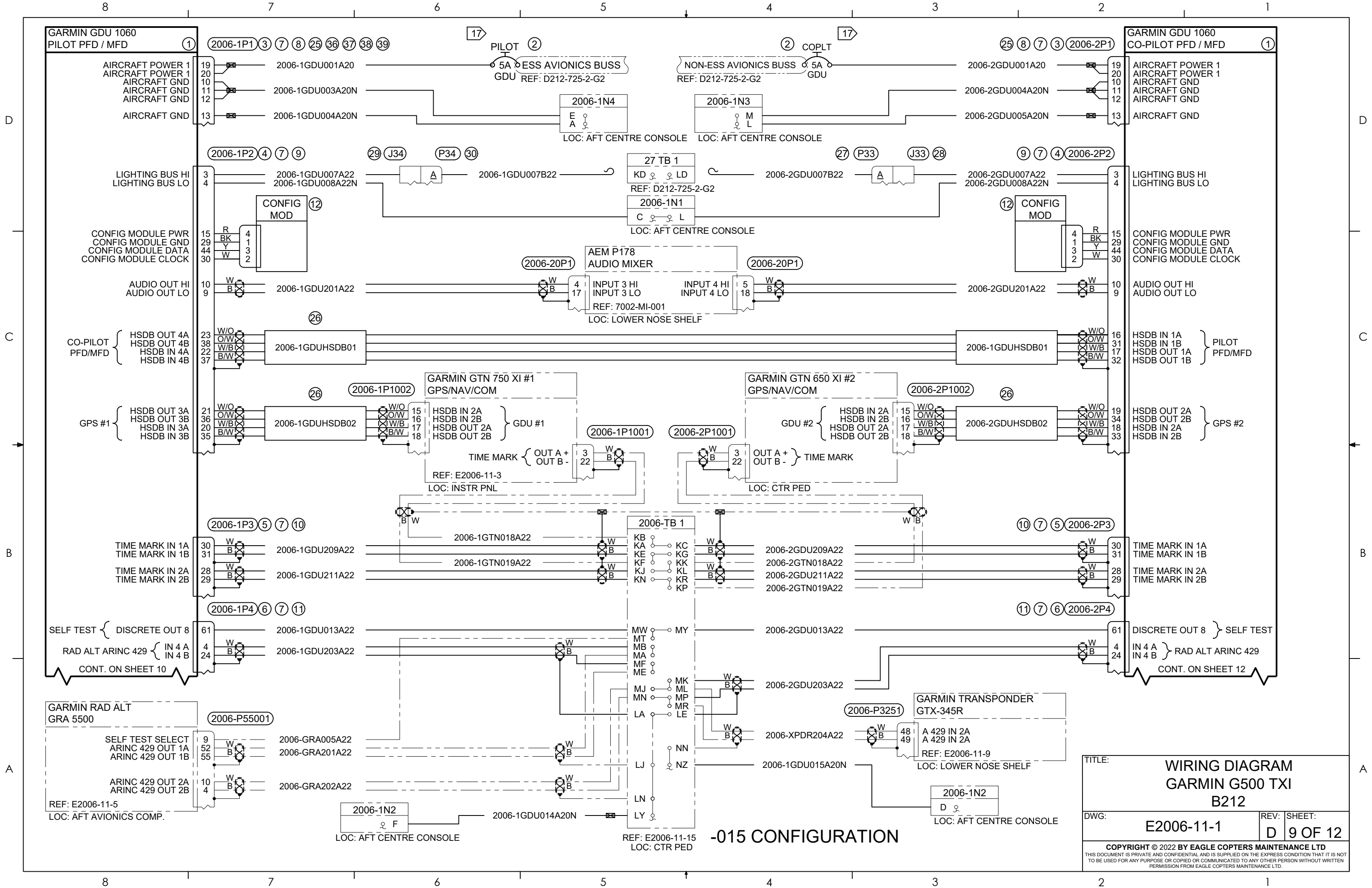
-013 CONFIGURATION

TITLE:		WIRING DIAGRAM GARMIN G500 TXI B212	
DWG:	E2006-11-1	REV:	D
SHEET:	7 OF 12		
<small>COPYRIGHT © 2022 BY EAGLE COPTERS MAINTENANCE LTD THIS DOCUMENT IS PRIVATE AND CONFIDENTIAL AND IS SUPPLIED ON THE EXPRESS CONDITION THAT IT IS NOT TO BE USED FOR ANY PURPOSE OR COPIED OR COMMUNICATED TO ANY OTHER PERSON WITHOUT WRITTEN PERMISSION FROM EAGLE COPTERS MAINTENANCE LTD.</small>			



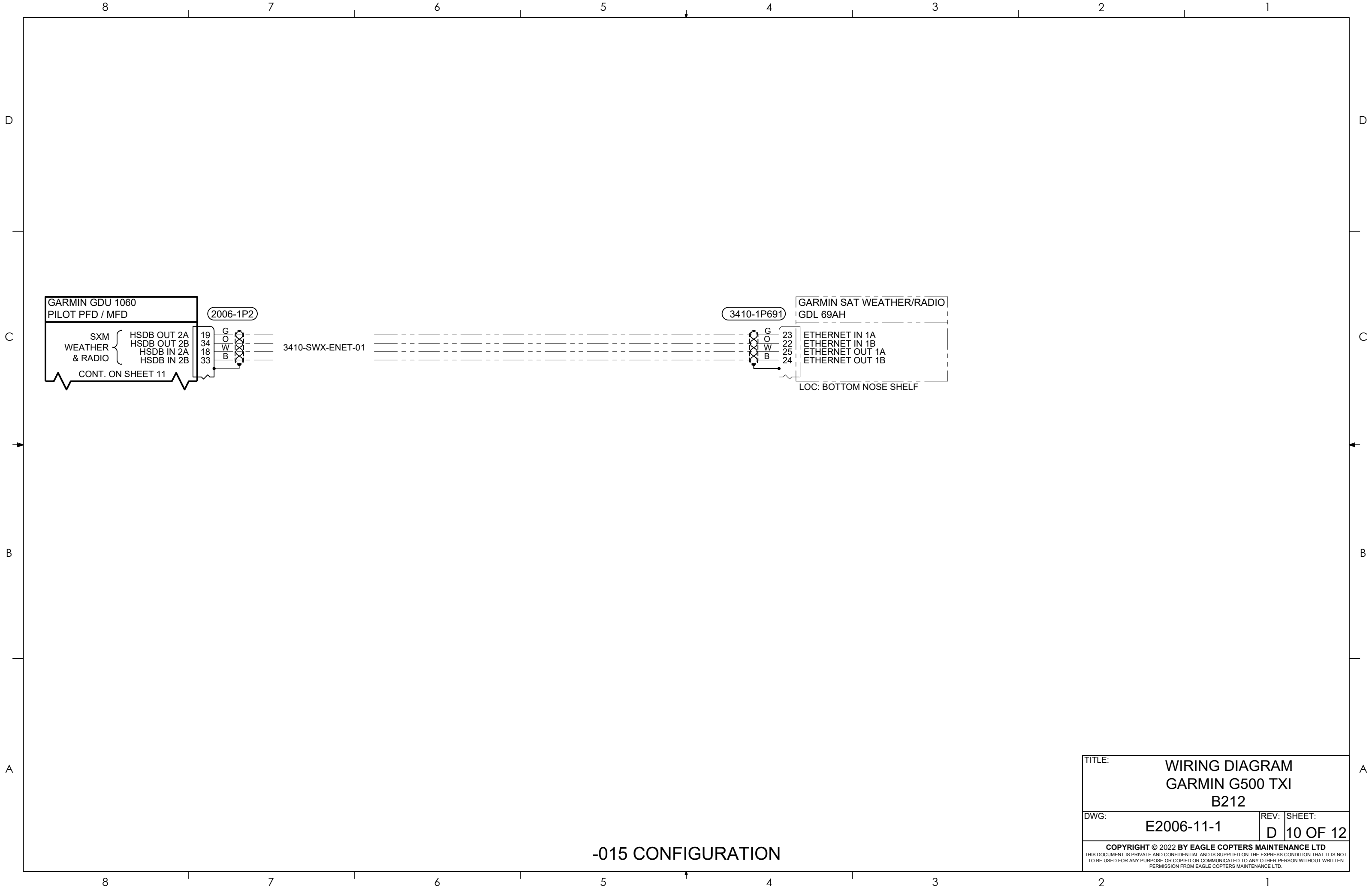
-013 CONFIGURATION

TITLE:		WIRING DIAGRAM GARMIN G500 TXI B212	
DWG:	E2006-11-1	REV:	D
SHEET:		8 OF 12	
<small>COPYRIGHT © 2022 BY EAGLE COPTERS MAINTENANCE LTD THIS DOCUMENT IS PRIVATE AND CONFIDENTIAL AND IS SUPPLIED ON THE EXPRESS CONDITION THAT IT IS NOT TO BE USED FOR ANY PURPOSE OR COPIED OR COMMUNICATED TO ANY OTHER PERSON WITHOUT WRITTEN PERMISSION FROM EAGLE COPTERS MAINTENANCE LTD.</small>			



-015 CONFIGURATION

TITLE:		WIRING DIAGRAM GARMIN G500 TXI B212	
DWG:	E2006-11-1	REV:	D
SHEET:		9 OF 12	
<small>COPYRIGHT © 2022 BY EAGLE COPTERS MAINTENANCE LTD THIS DOCUMENT IS PRIVATE AND CONFIDENTIAL AND IS SUPPLIED ON THE EXPRESS CONDITION THAT IT IS NOT TO BE USED FOR ANY PURPOSE OR COPIED OR COMMUNICATED TO ANY OTHER PERSON WITHOUT WRITTEN PERMISSION FROM EAGLE COPTERS MAINTENANCE LTD.</small>			



GARMIN GDU 1060
PILOT PFD / MFD

SXM
WEATHER
& RADIO

CONT. ON SHEET 11

2006-1P2

19 G
34 O
18 W
33 B

3410-SWX-ENET-01

3410-1P691

23 G
22 O
25 W
24 B

GARMIN SAT WEATHER/RADIO
GDL 69AH

ETHERNET IN 1A
ETHERNET IN 1B
ETHERNET OUT 1A
ETHERNET OUT 1B

LOC: BOTTOM NOSE SHELF

TITLE:			WIRING DIAGRAM GARMIN G500 TXI B212		
DWG:	E2006-11-1	REV:	D	SHEET:	10 OF 12
<small>COPYRIGHT © 2022 BY EAGLE COPTERS MAINTENANCE LTD THIS DOCUMENT IS PRIVATE AND CONFIDENTIAL AND IS SUPPLIED ON THE EXPRESS CONDITION THAT IT IS NOT TO BE USED FOR ANY PURPOSE OR COPIED OR COMMUNICATED TO ANY OTHER PERSON WITHOUT WRITTEN PERMISSION FROM EAGLE COPTERS MAINTENANCE LTD.</small>					

-015 CONFIGURATION

GARMIN ADAHRS PILOT GSU 75H (13)

AIRCRAFT POWER 1
AIRCRAFT POWER 2
POWER GROUND
POWER GROUND

CONFIG MODULE GROUND
CONFIG MODULE POWER OUT
CONFIG MODULE DATA
CONFIG MODULE CLOCK

RS-422 IN A
RS-422 IN B

RS-232 OUT AHRS 3
MAGNETOMETER POWER OUT
MAGNETOMETER GROUND

SYSTEM ID 1*
SIGNAL GROUND

OAT POWER
OAT HI
OAT LO

RS-232 OUT ADC 2
RS-232 ADC 2 GROUND

ARINC 429 OUT ADAHRS 1A
ARINC 429 OUT ADAHRS 1B

RS-232 OUT ADC 1
RS-232 IN ADC 1
RS-232 ADC 1 GROUND

RS-232 OUT AHRS 1
RS-232 IN AHRS 1
RS-232 AHRS 1 GROUND

ARINC 429 OUT ADAHRS 2A
ARINC 429 OUT ADAHRS 2B

ARINC 429 OUT ADAHRS 3A
ARINC 429 OUT ADAHRS 3B

LOC: UPPER NOSE SHELF

(2006-1P751) (15) (16) (17)

(18) **CONFIG MOD**

74 BK BK 1
R R 4
53 Y Y 3
54 W W 2
55

2006-1ADHRS001A20

2006-1ADHRS003A20N

2006-1N3
G ♀
LOC: AFT CENTRE CONSOLE

PILOT (14)

3A **ESS AVIONICS BUSS**

ADAHRS REF: D212-725-2-G2

(32) (35) (2006-8P1) (2006-8J1) (20) (34)

2006-1ADHRS201A22

2006-1ADHRS301A22

2006-1ADHRS201B22

2006-1ADHRS301B22

LOC: TAILBOOM

(44) (43) (7540-1P2) (7540-1J2) (41) (42)

2006-1ADHRS302A22

2006-1ADHRS302B22

LOC: UNDERFLOOR, AFT OF CTR PED

(2006-P3251)

GARMIN TRANSPONDER GTX 345R

RS-232 IN 1
RS-232 GROUND 1
REF: E2006-11-9
LOC: LOWER NOSE SHELF

(46) (2006-1P441)

GARMIN GMU 44B MAGNETOMETER (45)

RS-485 OUT A
RS-485 OUT B
SHIELD GROUND
RS-232 IN
12 VDC POWER
AIRCRAFT GROUND

LOC: TAILBOOM

(2006-1P4)

GARMIN GDU 1060 PILOT PFD / MFD

CONT. FROM SHEET 10

ARINC 429 IN 1A
ARINC 429 IN 1B

RS-232 IN 5
RS-232 OUT 5
RS-232 GND 5

RS-232 IN 6
RS-232 OUT 6
RS-232 GND 6

LOC: INSTR PNL

(2006-6P1)

STANDBY ATTITUDE MODULE COPILOT INSTRUMENT

ARINC IN 1 A
ARINC IN 1 B
REF: E2006-11-13
LOC: INST PNL

(2006-P8001)

GARMIN TCAS SYSTEM GTS 855

ARINC 429 IN 1A
ARINC 429 IN 1B

LOC: LOWER NOSE SHELF

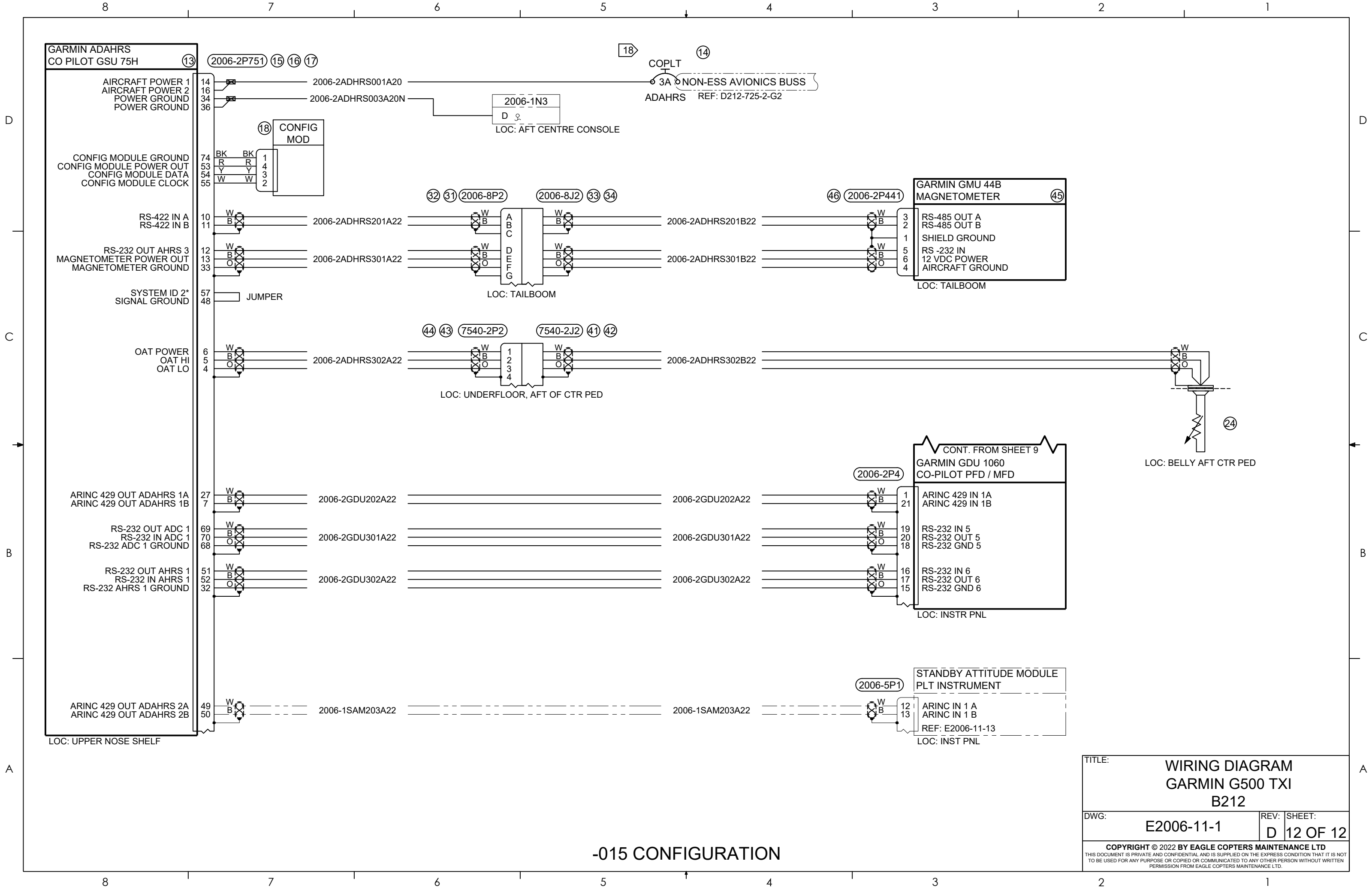
(24)

LOC: BELLY AFT CTR PED

TITLE: **WIRING DIAGRAM GARMIN G500 TXI B212**

DWG: **E2006-11-1** REV: **D** SHEET: **11 OF 12**

COPYRIGHT © 2022 BY EAGLE COPTERS MAINTENANCE LTD
THIS DOCUMENT IS PRIVATE AND CONFIDENTIAL AND IS SUPPLIED ON THE EXPRESS CONDITION THAT IT IS NOT TO BE USED FOR ANY PURPOSE OR COPIED OR COMMUNICATED TO ANY OTHER PERSON WITHOUT WRITTEN PERMISSION FROM EAGLE COPTERS MAINTENANCE LTD.



**GARMIN ADAHRS
CO PILOT GSU 75H** (13)

AIRCRAFT POWER 1
AIRCRAFT POWER 2
POWER GROUND
POWER GROUND

CONFIG MODULE GROUND
CONFIG MODULE POWER OUT
CONFIG MODULE DATA
CONFIG MODULE CLOCK

RS-422 IN A
RS-422 IN B

RS-232 OUT AHRS 3
MAGNETOMETER POWER OUT
MAGNETOMETER GROUND

SYSTEM ID 2*
SIGNAL GROUND

OAT POWER
OAT HI
OAT LO

ARINC 429 OUT ADAHRS 1A
ARINC 429 OUT ADAHRS 1B

RS-232 OUT ADC 1
RS-232 IN ADC 1
RS-232 ADC 1 GROUND

RS-232 OUT AHRS 1
RS-232 IN AHRS 1
RS-232 AHRS 1 GROUND

ARINC 429 OUT ADAHRS 2A
ARINC 429 OUT ADAHRS 2B

LOC: UPPER NOSE SHELF

2006-2P751 (15) (16) (17)

(18) CONFIG MOD

74 BK BK 1
R R 4
53 Y Y 3
54 W W 2
55

2006-2ADHRS001A20

2006-2ADHRS003A20N

2006-1N3
D ♀
LOC: AFT CENTRE CONSOLE

COPLT (14)

NON-ESS AVIONICS BUSS

ADAHRS REF: D212-725-2-G2

(32) (31) 2006-8P2 (2006-8J2) (33) (34)

2006-2ADHRS201A22

2006-2ADHRS301A22

LOC: TAILBOOM

(44) (43) 7540-2P2 (7540-2J2) (41) (42)

2006-2ADHRS302A22

2006-2ADHRS302B22

LOC: UNDERFLOOR, AFT OF CTR PED

(46) 2006-2P441

**GARMIN GMU 44B
MAGNETOMETER** (45)

3 RS-485 OUT A
2 RS-485 OUT B
1 SHIELD GROUND
5 RS-232 IN
6 12 VDC POWER
4 AIRCRAFT GROUND

LOC: TAILBOOM

CONT. FROM SHEET 9

**GARMIN GDU 1060
CO-PILOT PFD / MFD** (24)

2006-2P4

1 ARINC 429 IN 1A
21 ARINC 429 IN 1B

19 RS-232 IN 5
20 RS-232 OUT 5
18 RS-232 GND 5

16 RS-232 IN 6
17 RS-232 OUT 6
15 RS-232 GND 6

LOC: INSTR PNL

2006-5P1

STANDBY ATTITUDE MODULE
PLT INSTRUMENT

12 ARINC IN 1 A
13 ARINC IN 1 B

REF: E2006-11-13

LOC: INST PNL

TITLE:		WIRING DIAGRAM GARMIN G500 TXI B212	
DWG:	E2006-11-1	REV:	D
		SHEET:	12 OF 12
<small>COPYRIGHT © 2022 BY EAGLE COPTERS MAINTENANCE LTD THIS DOCUMENT IS PRIVATE AND CONFIDENTIAL AND IS SUPPLIED ON THE EXPRESS CONDITION THAT IT IS NOT TO BE USED FOR ANY PURPOSE OR COPIED OR COMMUNICATED TO ANY OTHER PERSON WITHOUT WRITTEN PERMISSION FROM EAGLE COPTERS MAINTENANCE LTD.</small>			

-015 CONFIGURATION