

REV	DESCRIPTION	DATE
A	NEW ISSUE	09-09-2021
B	TERMINAL BLOCK PINS REVISED	15-10-2021
C	CONFIG ADDED WITH NO DME AND DUAL GTN 750 XI	16-12-2022
D	ADDED -015 CONFIGURATION.	12-02-2024

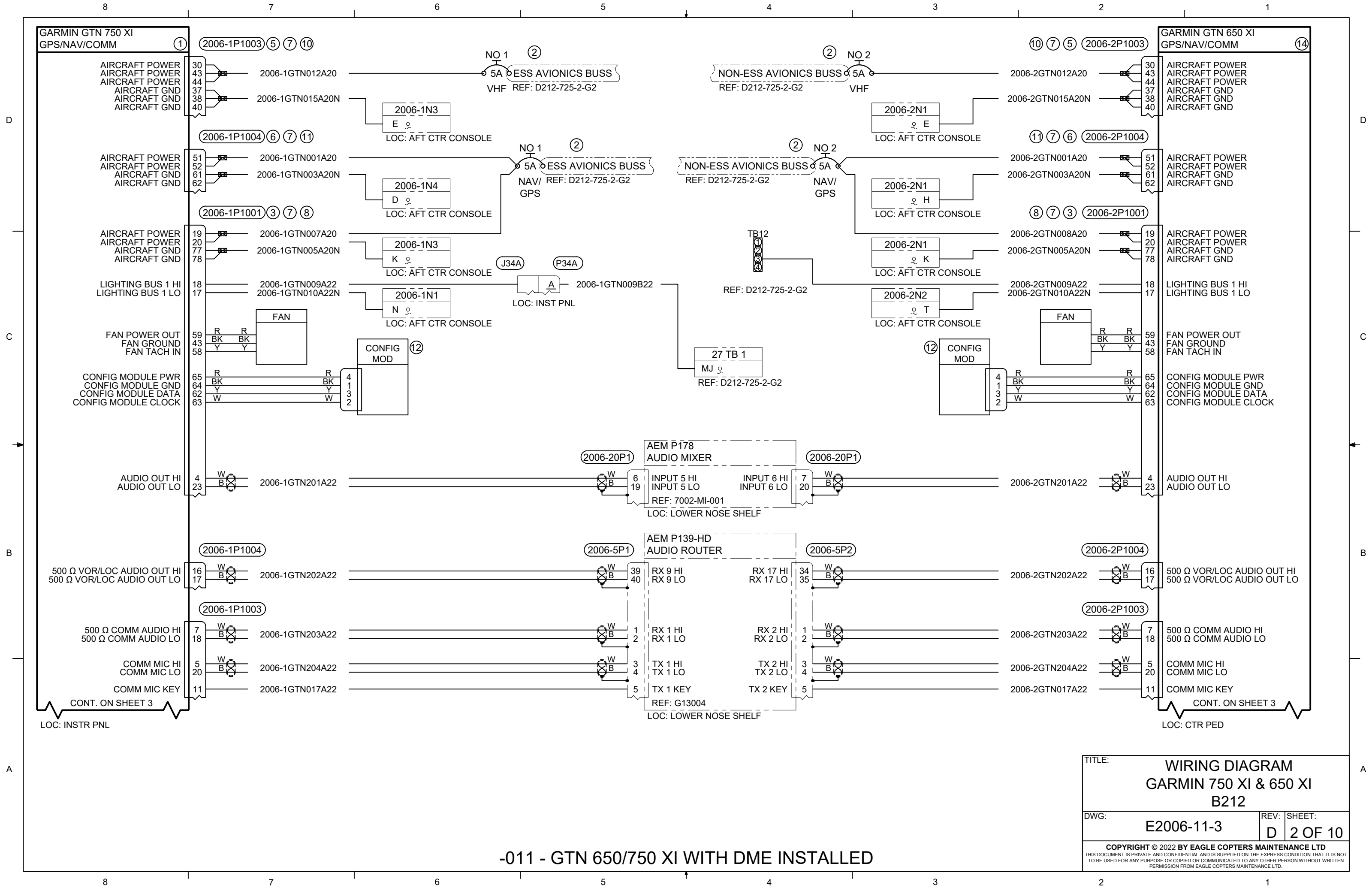
16	AR (260)	AR (260)	AR (260)	30	M17/60-RG142	CABLE, COAX	MIL SPEC
	1	1	1	29	PE9093	ADAPTER, BULKHEAD BNC	PASTERNAK
	1	1	1	28	011-02045-41	SD DATACARD W/ NAVIGATION	GARMIN
	1	1	1	27	011-00878-04	16 WATT COM ENABLEMENT CARD	GARMIN
	6	6	6	26	190108	CONNECTOR, TNC	PIC
	REF (1)	REF (1)	REF (1)	25	RGS10-48	ANTENNA, GLIDESLOPE	DAYTON-GRANGER
	1	1	1	24	RHT-615-0236	CONNECTOR, BULKHEAD TNC	AMPHENOL
	AR (20)	AR (20)	AR (20)	23	392404	CABLE, ETHERNET	CARLISLE
	16	16	16	22	190112	CONNECTOR, BNC	PIC
15	AR (40)	AR (40)	AR (40)	21	S44193	CABLE, COAX	PIC
	1	1	1	20	CI-292-2	ANTENNA, COMM	COMANT
	REF (1)	REF (1)	REF (1)	19	013-00235-00	ANTENNA, GPS	GARMIN
	REF (1)	REF (1)	REF (1)	18	DMN4-4	ANTENNA, VOR/LOC	DORNE AND MARGOLIN
	1	1	1	17	CI-292-1	ANTENNA, GPS/COMM	COMANT
	1	1	1	16	ZFSC-2-1B+	COXIAL POWER SPLITTER	MINI CIRCUITS
	1	1	1	15	CI 507	ANTENNA, DIPLEXER	COMANT
	1	-	1	14	011-04631-00	GTN 650 XI	GARMIN
	-	-	-	13	NOT REQUIRED	NOT REQUIRED	NOT REQUIRED
	2	2	2	12	011-00979-03	KIT, CONFIGURATION MODULE	GARMIN
13	14	2	2	11	125-00084-00	BACKSHELL	GARMIN
13	14	2	2	10	125-00083-00	BACKSHELL	GARMIN
13	14	2	2	9	125-00082-00	BACKSHELL	GARMIN
13	14	2	2	8	125-00085-00	BACKSHELL	GARMIN
13	14	AR (420)	AR (420)	AR (420)	7	336-00021-00	CONTACT, PIN
13	14	2	2	2	6	330-00185-62	CONNECTOR, PLUG
13	14	2	2	2	5	330-00185-44	CONNECTOR, PLUG
13	14	2	2	2	4	330-00185-26	CONNECTOR, PLUG
13	14	2	2	2	3	330-00185-78	CONNECTOR, PLUG
	4	4	4	2	MS22073-5	CIRCUIT BREAKER, 5A	MIL SPEC
	1	1	1	1	011-04634-00	GTN 750 XI	GARMIN
					-015	GTN 650/750 XI WITHOUT DME INSTALLED	
					-013	DUAL GTN 750 XI WITHOUT DME INSTALLED	
					-011	GTN 650/750 XI WITH DME INSTALLED	
	-015 QTY	-013 QTY	-011 QTY	ITEM	PART NUMBER	DESCRIPTION	REMARKS

NOTES:
 _____ NEW WIRE / UNIT
 - - - - - EXISTING WIRE / UNIT

- PERFORM ALL WORK IN ACCORDANCE WITH BELL HELICOPTER STANDARD PRACTICES MANUAL BHT-ELEC-SPM.
- ALL NEW UNSHIELDED WIRE USE M22759/41-(XX)-9 OR EQUIVALENT TYPE WIRE. (M22759/41-(XX)-9 IS NOT INTENDED TO BE USED IN SOLDER APPLICATIONS, SOLDERABILITY CAN BE ACHIEVED WITH THE PROPER SOLDER. USE CRIMP SPLICES FOR REPAIR). ALL WIRES 22 AWG UNLESS OTHERWISE SPECIFIED BY WIRE CODE. ALL JUMPERS TO BE LESS THAN 6 INCHES.
- ALL NEW SHIELDED WIRE USE M27500-(XX)SM(X)N23 OR EQUIVALENT TYPE WIRE. (M27500-(XX)SM(X)N23 IS NOT INTENDED TO BE USED IN SOLDER APPLICATIONS, SOLDERABILITY CAN BE ACHIEVED WITH THE PROPER SOLDER. USE CRIMP SPLICES FOR REPAIR). SOLDER SLEEVES SHALL USE SN96 SOLDER, USE P/N S200-X-00 OR EQUIVALENT.
- ALL SHIELD TERMINATIONS SHALL BE INSTALLED PER MIL-S-83519 OR EQUIVALENT. SHIELD TERMINATIONS SHOWN AS "DAISY-CHAINED" ARE FOR DRAWING CLARITY ONLY. INDIVIDUAL SHIELD EXTENSIONS SHALL BE SPLICED AT A COMMON TIE POINT TO THE TERMINATING WIRES. THE BACK SHELL OR AIRFRAME GROUND MAY BE USED.
- ALL AIRFRAME GROUNDS SHALL BE VIA AMP LUG OR GROUNDING BLOCK AND PROVIDE SEPARATE GROUND STUD LOCATIONS FOR DC POWER GROUNDS, AC POWER GROUNDS, CHASSIS GROUNDS, SIGNAL GROUNDS AND SHIELD GROUNDS.
- ALL EQUIPMENT BONDING TO ADJACENT AIRFRAME STRUCTURE TO BE 0.003 OHM OR LESS. ALL ELECTRICAL GROUNDING AND BONDING TO BE INSTALLED IN ACCORDANCE WITH THE LATEST REVISION OF BHT-ELEC-SPM CHAPTER 8.
- ALL TERMINALS TO BE INSTALLED IN ACCORDANCE WITH THE LATEST REVISION OF BHT-ELEC-SPM CHAPTER 4 PARAGRAPH 4-9.
- ALL CONNECTORS TO BE INSTALLED IN ACCORDANCE WITH THE LATEST REVISION OF BHT-ELEC-SPM CHAPTER 5 AND / OR CIRCULAR CONNECTOR INSTALLATION INSTRUCTIONS (GARMIN DOCUMENT 190-00313-12). ENSURE ALL UNUSED CONNECTOR CONTACTS ARE FILLED WITH SPARE PINS/SOCKETS OR PLASTIC GROMMET SEALING PLUGS. ENSURE ALL BULKHEAD MOUNTED CONNECTORS ARE PROPERLY BONDED TO AIRFRAME.
- ENSURE ALL SWITCHES, CIRCUIT BREAKERS, AND REMOTE MOUNTED BOXES ARE LABELED WITH A CONSISTENT SIZE, FONT, COLOR, BACKGROUND AND ARE ILLUMINATED CONSISTENT AS EXISTING LABELS.
- ROUTE ALL WIRES AND CABLES WITH EXISTING WIRE ROUTES WHERE POSSIBLE AND CLAMP IN ACCORDANCE WITH THE LATEST REVISION OF BHT-ELEC-SPM CHAPTER 6. WIRES MUST BE ROUTED WITH A MINIMUM OF 6 INCHES OF SEPARATION FROM OXYGEN AND FLUID LINES (MIN 2 INCHES IF WIRES IN CONDUIT).
- INSTALL SYSTEM IN ACCORDANCE WITH THE LATEST REVISION OF THE MANUFACTURERS INSTALLATION MANUAL.
- LOWERCASE LETTER CONNECTOR PIN DESIGNATORS ARE SHOWN AS UNDERLINED UPPER CASE LETTERS.
- INCLUDED IN KIT PN: 011-02325-02
- INCLUDED IN KIT PN: 011-02326-02
- THE CUMULATIVE COAX CABLE LENGTH BETWEEN LRU AND ANTENNA NOT TO EXCEED 50 FT WHEN USING P/N S44193 FOR GPS.
- THE CUMULATIVE COAX CABLE LENGTH BETWEEN LRU AND ANTENNA NOT TO EXCEED 35 FT WHEN USING P/N RG142B FOR GPS.
- POWER WIRES NOT TO EXCEED 20 FT FROM A 5A CIRCUIT BREAKER.

PREPARED	<i>NF</i>	 <p>COPYRIGHT ©2022 BY EAGLE COPTERS MAINTENANCE LTD THIS DOCUMENT IS PRIVATE AND CONFIDENTIAL AND IS SUPPLIED ON THE EXPRESS CONDITION THAT IT IS NOT TO BE USED FOR ANY PURPOSE OR COPIED OR COMMUNICATED TO ANY OTHER PERSON WITHOUT WRITTEN PERMISSION FROM EAGLE COPTERS MAINTENANCE LTD.</p>			
REVIEWED	<i>CP</i>				
RELEASED	<i>JP</i>				
SCALE:	NTS	TITLE:	WIRING DIAGRAM GARMIN 750 XI & 650 XI B212	DWG:	E2006-11-3
				REV:	D
				SHEET:	1 OF 10

THIS DRAWING IS UNCONTROLLED UNLESS OPENED DIRECTLY FROM ECML'S CONTROLLED REPOSITORY

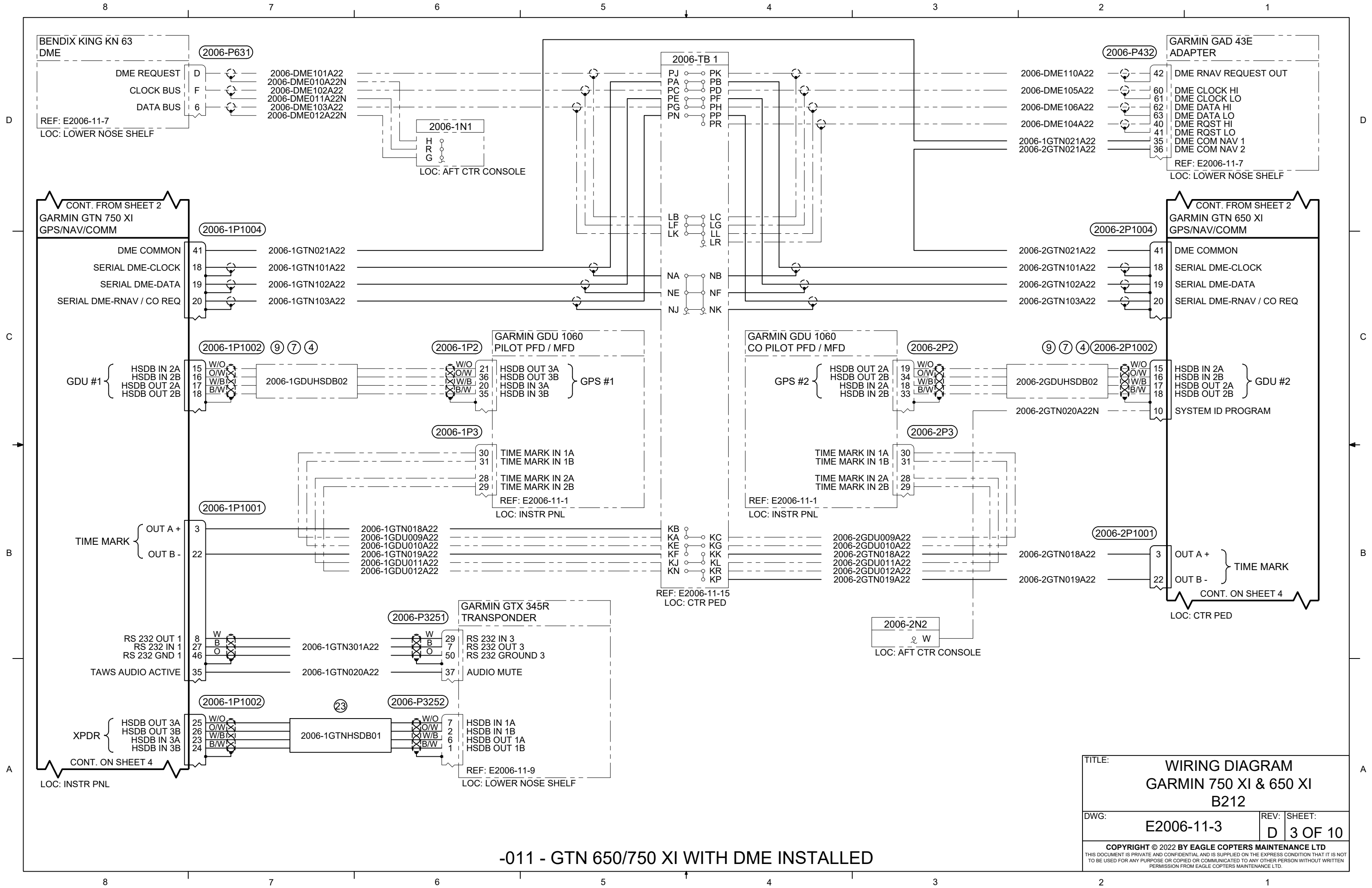


-011 - GTN 650/750 XI WITH DME INSTALLED

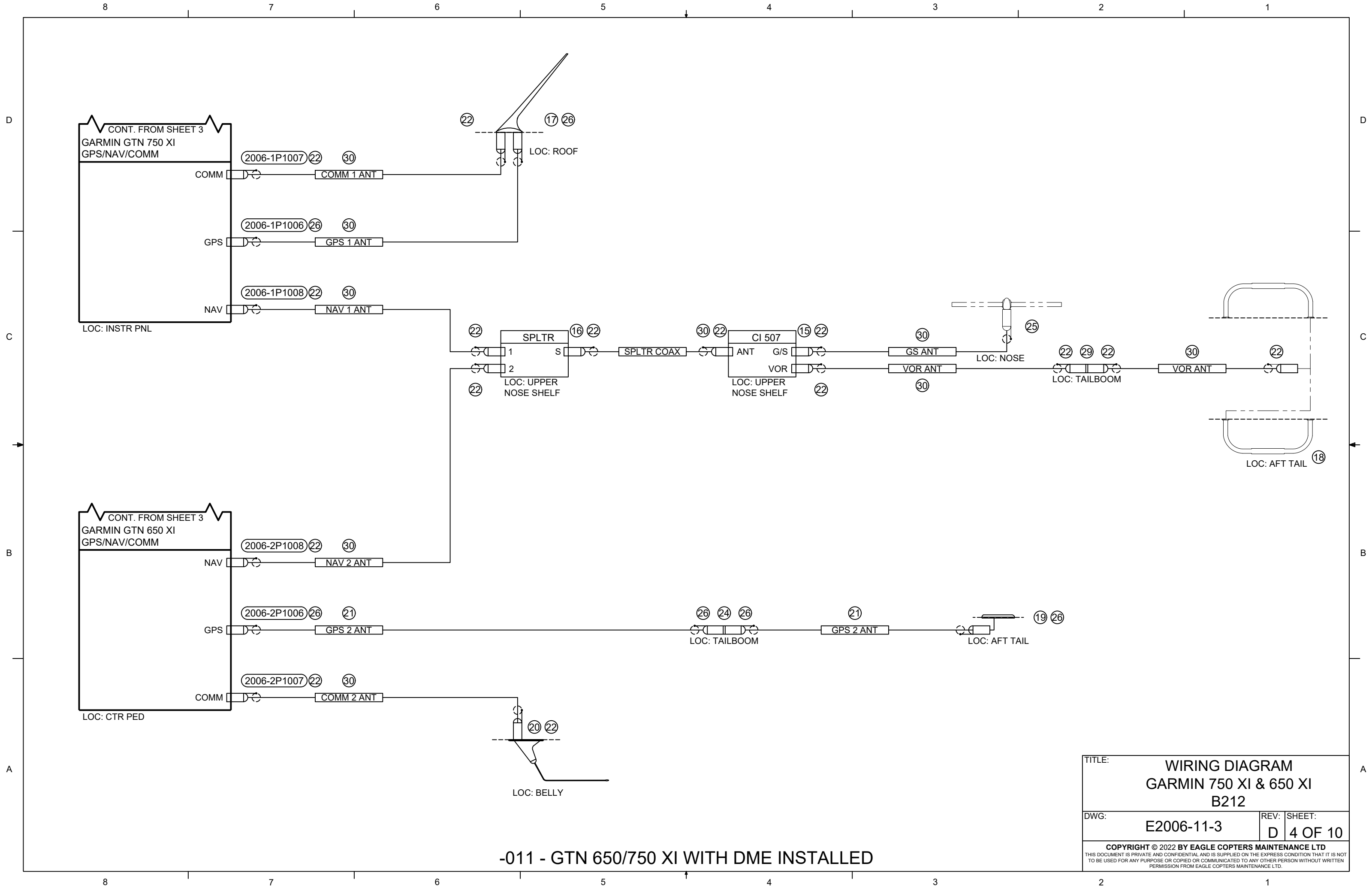
TITLE:		WIRING DIAGRAM GARMIN 750 XI & 650 XI B212	
DWG:	E2006-11-3	REV:	D
		SHEET:	2 OF 10
<small>COPYRIGHT © 2022 BY EAGLE COPTERS MAINTENANCE LTD THIS DOCUMENT IS PRIVATE AND CONFIDENTIAL AND IS SUPPLIED ON THE EXPRESS CONDITION THAT IT IS NOT TO BE USED FOR ANY PURPOSE OR COPIED OR COMMUNICATED TO ANY OTHER PERSON WITHOUT WRITTEN PERMISSION FROM EAGLE COPTERS MAINTENANCE LTD.</small>			

CONT. ON SHEET 3
LOC: INSTR PNL

CONT. ON SHEET 3
LOC: CTR PED

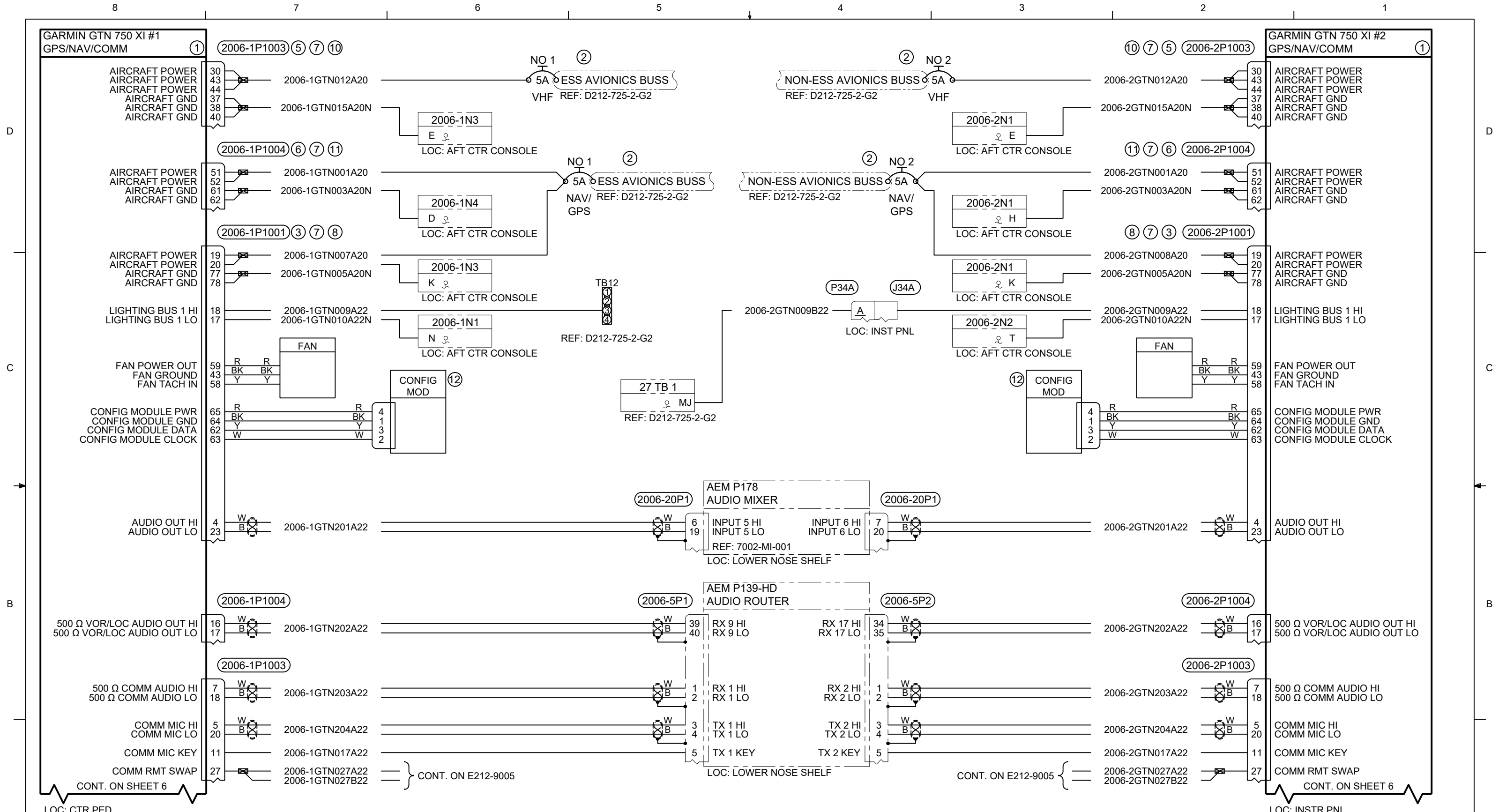


TITLE:		WIRING DIAGRAM GARMIN 750 XI & 650 XI B212	
DWG:	E2006-11-3	REV:	D
		SHEET:	3 OF 10
<small>COPYRIGHT © 2022 BY EAGLE COPTERS MAINTENANCE LTD THIS DOCUMENT IS PRIVATE AND CONFIDENTIAL AND IS SUPPLIED ON THE EXPRESS CONDITION THAT IT IS NOT TO BE USED FOR ANY PURPOSE OR COPIED OR COMMUNICATED TO ANY OTHER PERSON WITHOUT WRITTEN PERMISSION FROM EAGLE COPTERS MAINTENANCE LTD.</small>			



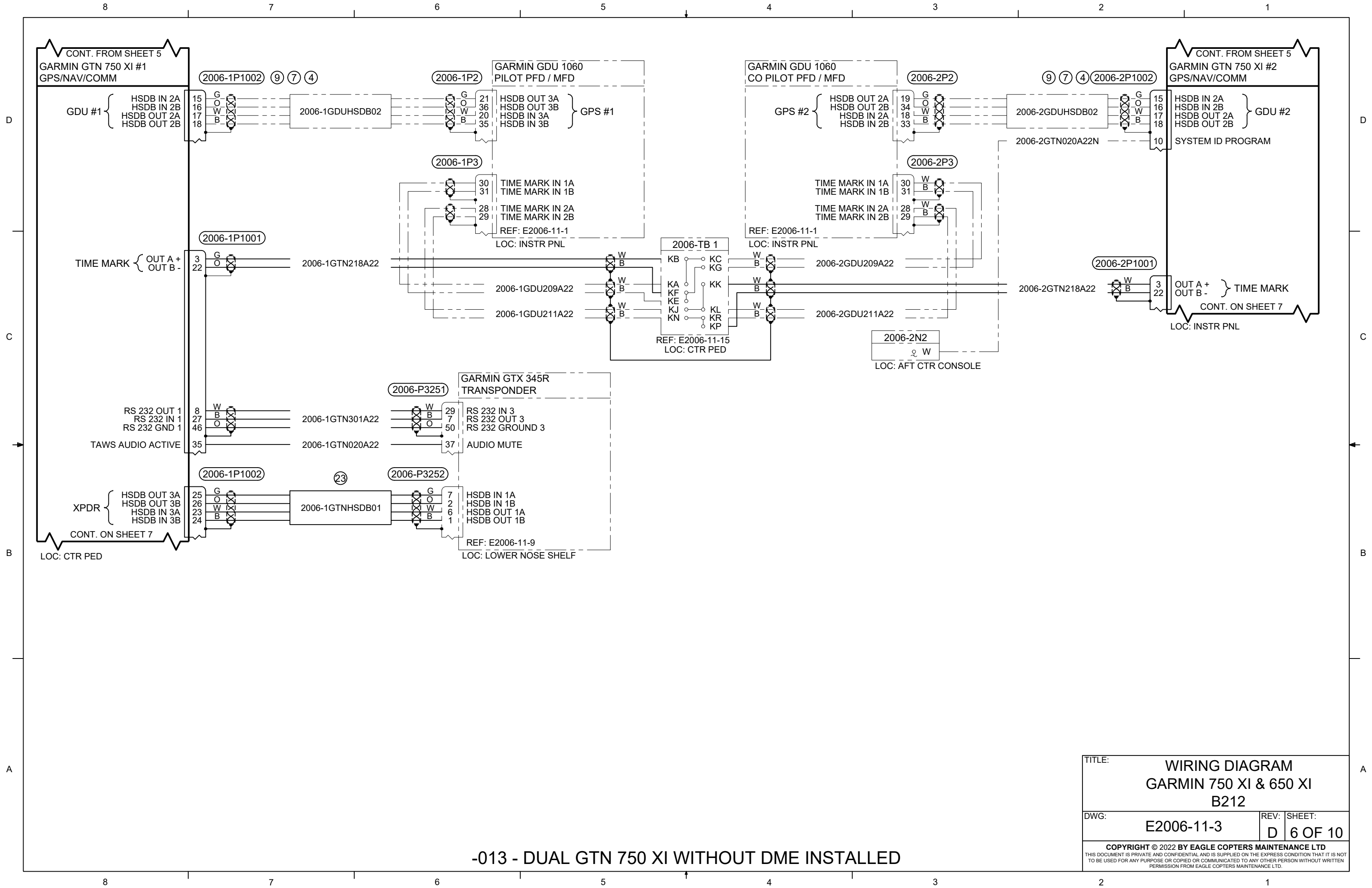
-011 - GTN 650/750 XI WITH DME INSTALLED

TITLE:			WIRING DIAGRAM GARMIN 750 XI & 650 XI B212		
DWG:		E2006-11-3		REV:	D
				SHEET:	4 OF 10
<small>COPYRIGHT © 2022 BY EAGLE COPTERS MAINTENANCE LTD THIS DOCUMENT IS PRIVATE AND CONFIDENTIAL AND IS SUPPLIED ON THE EXPRESS CONDITION THAT IT IS NOT TO BE USED FOR ANY PURPOSE OR COPIED OR COMMUNICATED TO ANY OTHER PERSON WITHOUT WRITTEN PERMISSION FROM EAGLE COPTERS MAINTENANCE LTD.</small>					

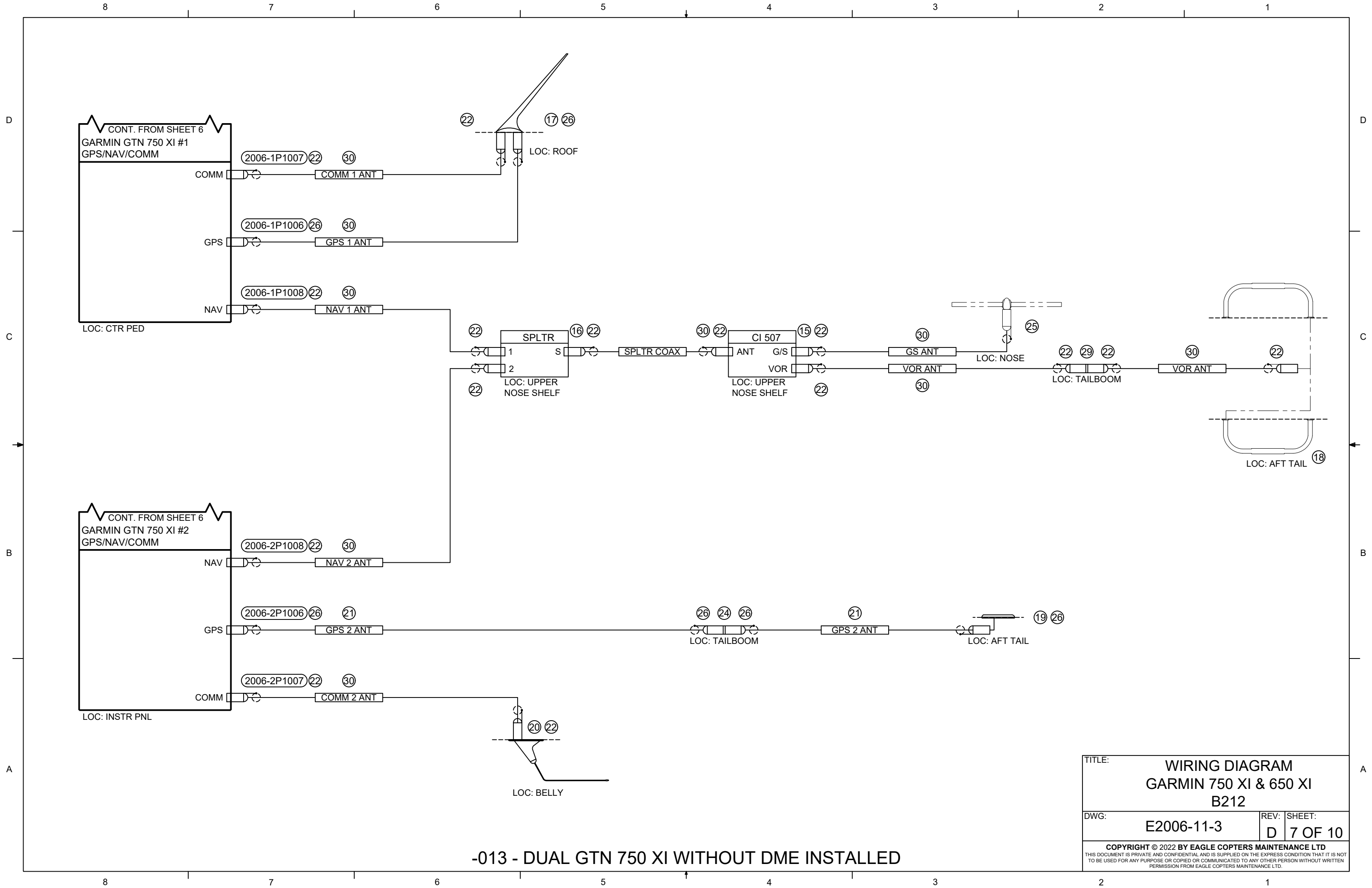


TITLE:		WIRING DIAGRAM	
		GARMIN 750 XI & 650 XI	
		B212	
DWG:	E2006-11-3	REV:	D
		SHEET:	5 OF 10
<small>COPYRIGHT © 2022 BY EAGLE COPTERS MAINTENANCE LTD THIS DOCUMENT IS PRIVATE AND CONFIDENTIAL AND IS SUPPLIED ON THE EXPRESS CONDITION THAT IT IS NOT TO BE USED FOR ANY PURPOSE OR COPIED OR COMMUNICATED TO ANY OTHER PERSON WITHOUT WRITTEN PERMISSION FROM EAGLE COPTERS MAINTENANCE LTD.</small>			

-013 - DUAL GTN 750 XI WITHOUT DME INSTALLED

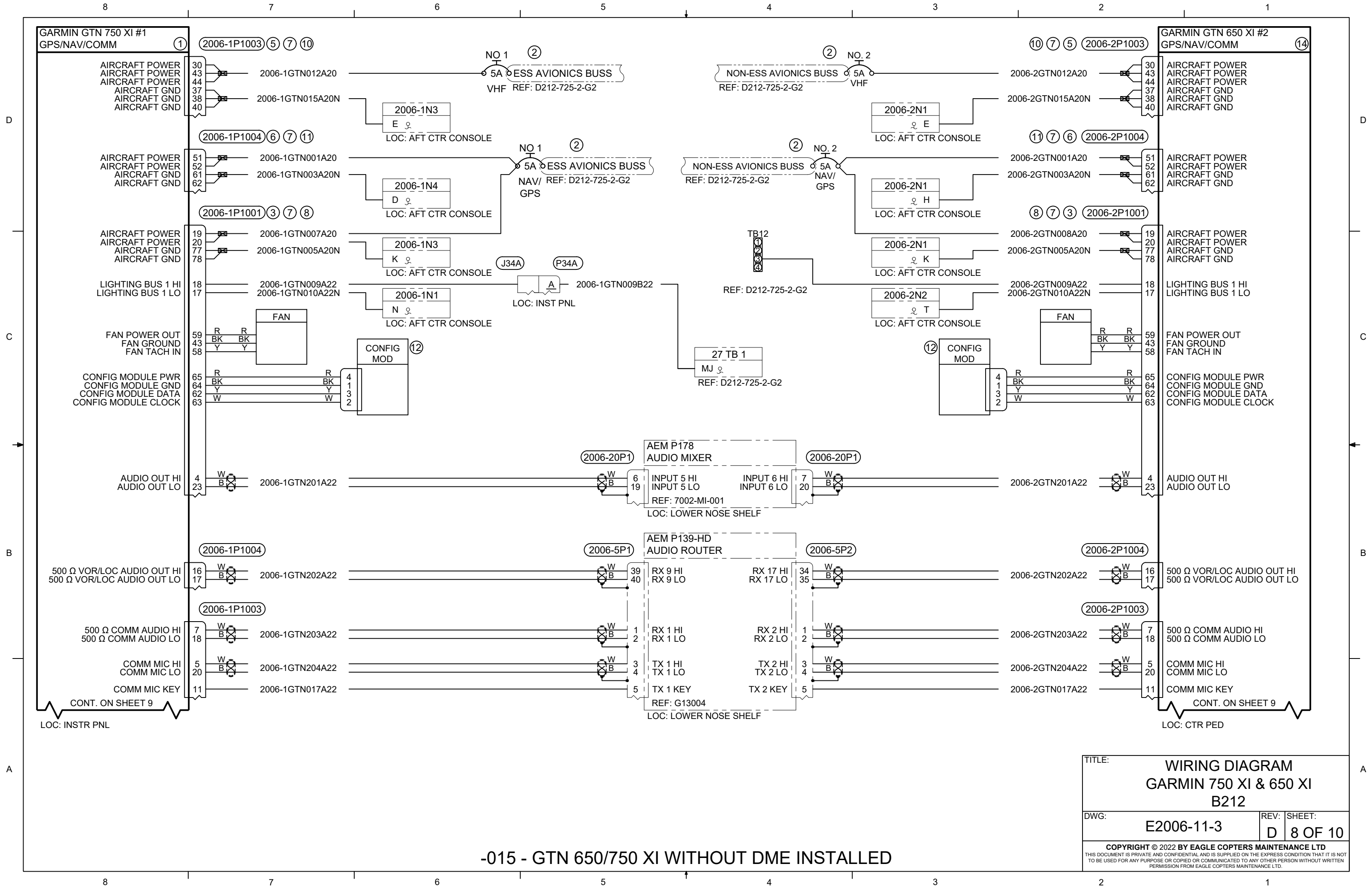


TITLE:		WIRING DIAGRAM GARMIN 750 XI & 650 XI B212	
DWG:	E2006-11-3	REV:	D
SHEET:		6 OF 10	
<small>COPYRIGHT © 2022 BY EAGLE COPTERS MAINTENANCE LTD THIS DOCUMENT IS PRIVATE AND CONFIDENTIAL AND IS SUPPLIED ON THE EXPRESS CONDITION THAT IT IS NOT TO BE USED FOR ANY PURPOSE OR COPIED OR COMMUNICATED TO ANY OTHER PERSON WITHOUT WRITTEN PERMISSION FROM EAGLE COPTERS MAINTENANCE LTD.</small>			



-013 - DUAL GTN 750 XI WITHOUT DME INSTALLED

TITLE:		WIRING DIAGRAM GARMIN 750 XI & 650 XI B212	
DWG:	E2006-11-3	REV:	D
SHEET:		7 OF 10	
<small>COPYRIGHT © 2022 BY EAGLE COPTERS MAINTENANCE LTD THIS DOCUMENT IS PRIVATE AND CONFIDENTIAL AND IS SUPPLIED ON THE EXPRESS CONDITION THAT IT IS NOT TO BE USED FOR ANY PURPOSE OR COPIED OR COMMUNICATED TO ANY OTHER PERSON WITHOUT WRITTEN PERMISSION FROM EAGLE COPTERS MAINTENANCE LTD.</small>			

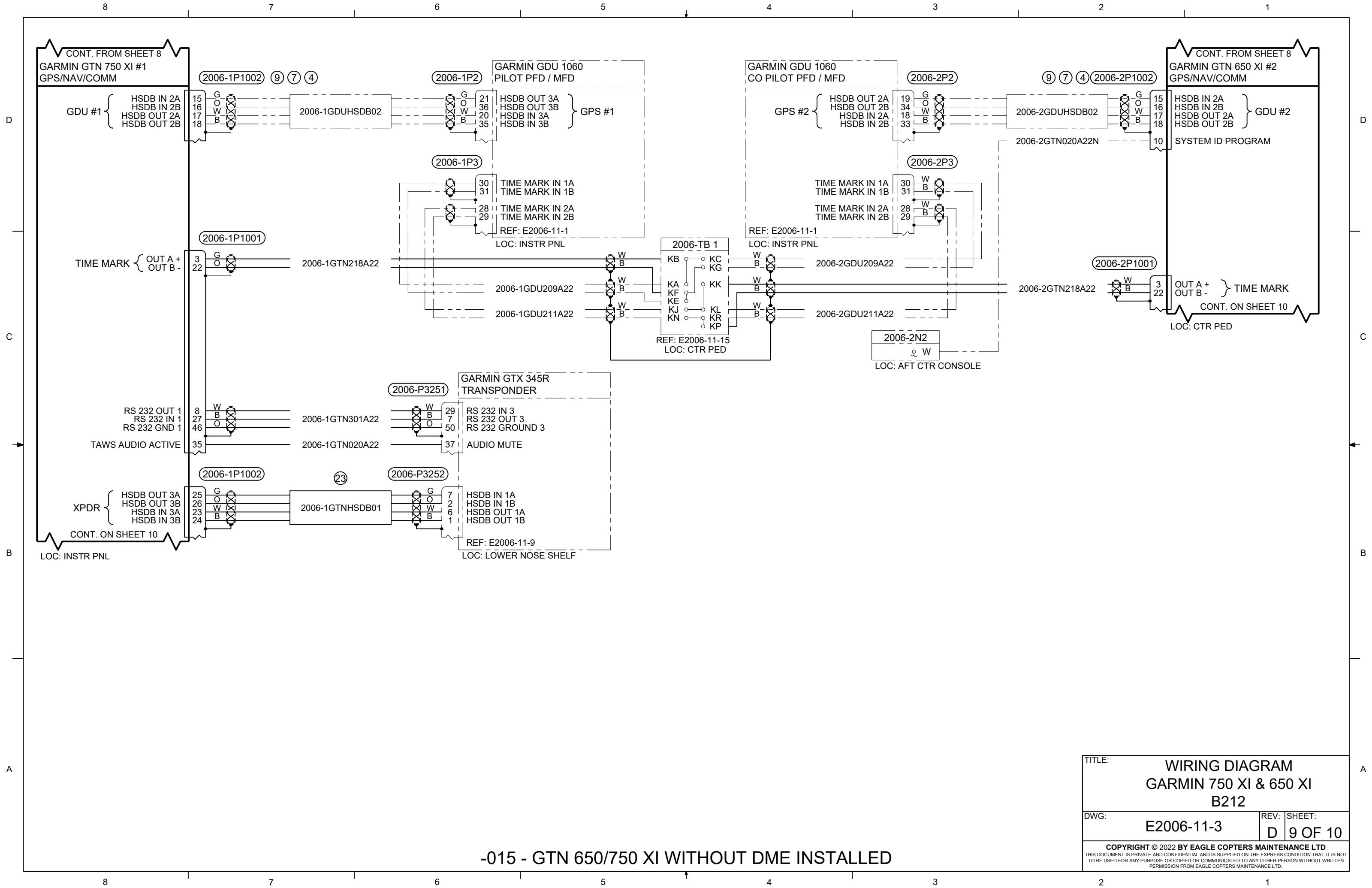


CONT. ON SHEET 9
LOC: INSTR PNL

CONT. ON SHEET 9
LOC: CTR PED

TITLE:		WIRING DIAGRAM GARMIN 750 XI & 650 XI B212	
DWG:	E2006-11-3	REV:	D
SHEET:	8 OF 10		
<small>COPYRIGHT © 2022 BY EAGLE COPTERS MAINTENANCE LTD THIS DOCUMENT IS PRIVATE AND CONFIDENTIAL AND IS SUPPLIED ON THE EXPRESS CONDITION THAT IT IS NOT TO BE USED FOR ANY PURPOSE OR COPIED OR COMMUNICATED TO ANY OTHER PERSON WITHOUT WRITTEN PERMISSION FROM EAGLE COPTERS MAINTENANCE LTD.</small>			

-015 - GTN 650/750 XI WITHOUT DME INSTALLED



CONT. FROM SHEET 8
GARMIN GTN 750 XI #1
GPS/NAV/COMM

CONT. FROM SHEET 8
GARMIN GTN 650 XI #2
GPS/NAV/COMM

GDU #1
HSDB IN 2A
HSDB IN 2B
HSDB OUT 2A
HSDB OUT 2B

GDU #2
HSDB IN 2A
HSDB IN 2B
HSDB OUT 2A
HSDB OUT 2B

TIME MARK
OUT A +
OUT B -

TIME MARK
OUT A +
OUT B -

RS 232 OUT 1
RS 232 IN 1
RS 232 GND 1
TAWS AUDIO ACTIVE

XPDR
HSDB OUT 3A
HSDB OUT 3B
HSDB IN 3A
HSDB IN 3B

CONT. ON SHEET 10
LOC: INSTR PNL

GARMIN GDU 1060
PILOT PFD / MFD
GPS #1
HSDB OUT 3A
HSDB OUT 3B
HSDB IN 3A
HSDB IN 3B

GARMIN GDU 1060
CO PILOT PFD / MFD
GPS #2
HSDB OUT 2A
HSDB OUT 2B
HSDB IN 2A
HSDB IN 2B

TIME MARK IN 1A
TIME MARK IN 1B
TIME MARK IN 2A
TIME MARK IN 2B
REF: E2006-11-1
LOC: INSTR PNL

TIME MARK IN 1A
TIME MARK IN 1B
TIME MARK IN 2A
TIME MARK IN 2B
REF: E2006-11-1
LOC: INSTR PNL

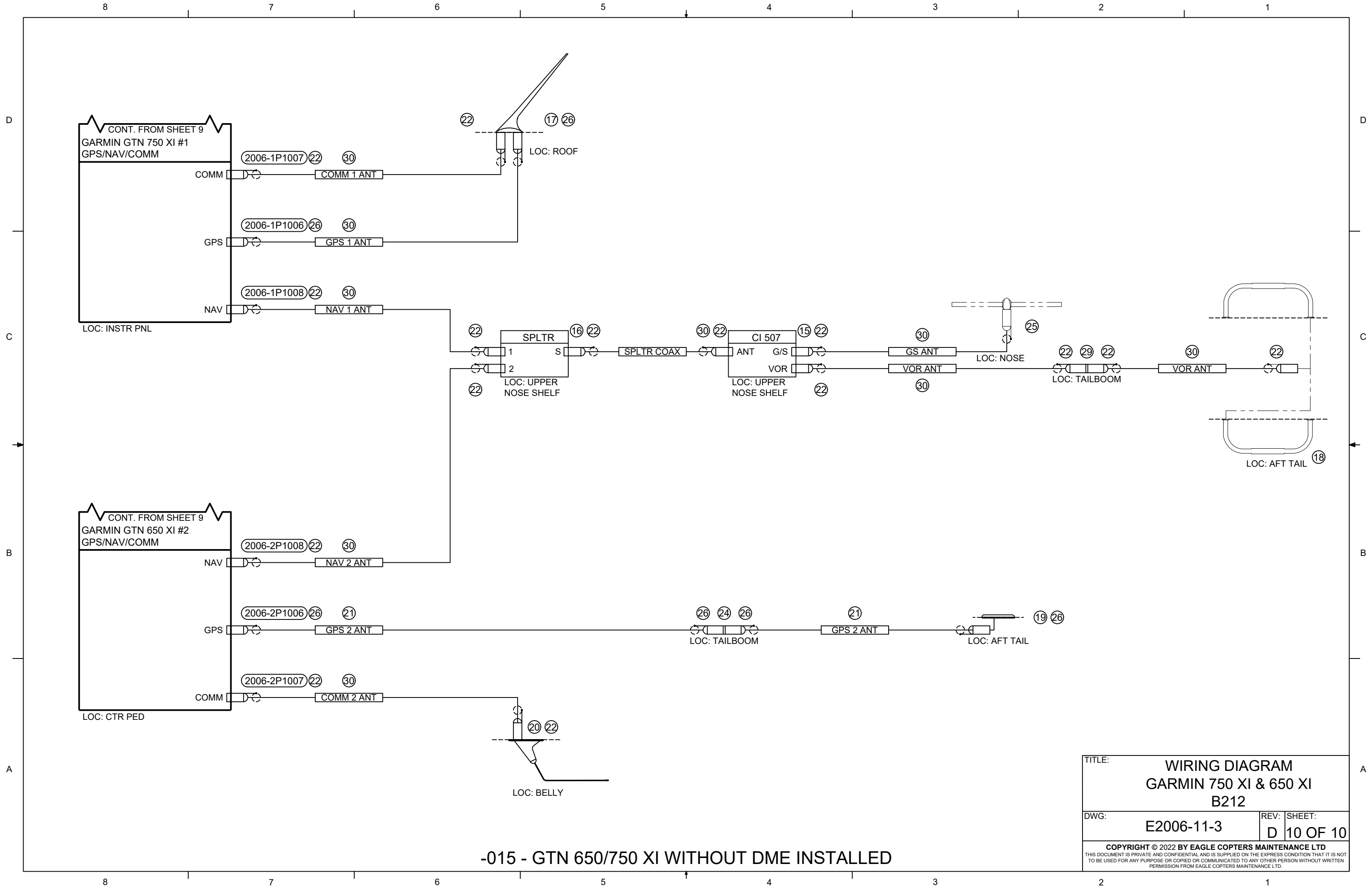
2006-TB 1
KB
KC
KF
KG
KK
KL
KR
KP
REF: E2006-11-15
LOC: CTR PED

2006-2N2
W
LOC: AFT CTR CONSOLE

GARMIN GTX 345R
TRANSPONDER
RS 232 IN 3
RS 232 OUT 3
RS 232 GROUND 3
AUDIO MUTE

HSDB IN 1A
HSDB IN 1B
HSDB OUT 1A
HSDB OUT 1B
REF: E2006-11-9
LOC: LOWER NOSE SHELF

TITLE:		WIRING DIAGRAM GARMIN 750 XI & 650 XI B212	
DWG:	E2006-11-3	REV:	D
SHEET:		9 OF 10	
<small>COPYRIGHT © 2022 BY EAGLE COPTERS MAINTENANCE LTD THIS DOCUMENT IS PRIVATE AND CONFIDENTIAL AND IS SUPPLIED ON THE EXPRESS CONDITION THAT IT IS NOT TO BE USED FOR ANY PURPOSE OR COPIED OR COMMUNICATED TO ANY OTHER PERSON WITHOUT WRITTEN PERMISSION FROM EAGLE COPTERS MAINTENANCE LTD.</small>			



-015 - GTN 650/750 XI WITHOUT DME INSTALLED

TITLE:		WIRING DIAGRAM GARMIN 750 XI & 650 XI B212	
DWG:	E2006-11-3	REV:	SHEET: D 10 OF 10
<small>COPYRIGHT © 2022 BY EAGLE COPTERS MAINTENANCE LTD THIS DOCUMENT IS PRIVATE AND CONFIDENTIAL AND IS SUPPLIED ON THE EXPRESS CONDITION THAT IT IS NOT TO BE USED FOR ANY PURPOSE OR COPIED OR COMMUNICATED TO ANY OTHER PERSON WITHOUT WRITTEN PERMISSION FROM EAGLE COPTERS MAINTENANCE LTD.</small>			