

REV	DESCRIPTION	DATE
A	INITIAL RELEASE	16-02-2024

NOTES:

- FIGURE ILLUSTRATES ALL POSSIBLE INSTALLATION OPTIONS. ONLY THE APPLICABLE OPTIONS ARE TO BE INSTALLED FOR EACH DEFINED CONFIGURATION PER THE BILL OF MATERIALS.
- LOCATION SHOWN ARE APPROXIMATE. SEE INSTALLATION DRAWINGS FOR SPECIFIC LOCATIONS.
- ITEM NOT ILLUSTRATED.

-023 QTY	-021 QTY	-019 QTY	ITEM	PART NUMBER	DESCRIPTION	REMARKS
			3	49	E212-9011-013 WIRING DIAGRAM, DUAL CAMERA PROVISIONS	
			3	48	E212-9011-011 WIRING DIAGRAM, SINGLE CAMERA PROVISIONS	
	1	1		47	E212-9007-011 WIRING DIAGRAM, GDL 69AH SXM RECEIVER	
	1			46	E2006-12-1-015 WIRING ROUTING DIAGRAM GTN 750/650 W/O DME	
		1		45	E2006-12-1-013 WIRING ROUTING DIAGRAM DUAL GTN 750 W/O DME	
			3	44	E2006-12-1-011 WIRING ROUTING DIAGRAM GTN 750/650 W/ DME	
	1	1		43	E2006-11-15-013 WIRING DIAGRAM, TERMINAL BLOCKS W/O DME	
		1		42	E2006-11-15-011 WIRING DIAGRAM, TERMINAL BLOCKS W/ DME	
	1	1		41	E2006-11-13-013 WIRING DIAGRAM, STANDBY ATTITUDE MOD PHOTOCELL DIMMING	
		1		40	E2006-11-13-011 WIRING DIAGRAM, STANDBY ATTITUDE MOD A/C DIMMING	
	1	1		39	E2006-11-11-013 WIRING DIAGRAM, GTS 855 TCAS I W/O DME	
		1		38	E2006-11-11-011 WIRING DIAGRAM, GTS 855 TCAS I W/ DME	
	1			37	E2006-11-9-015 WIRING DIAGRAM, GTX 345R TRANSPONDER GTN 750/650 W/O DME	
		1		36	E2006-11-9-013 WIRING DIAGRAM, GTX 345R TRANSPONDER DUAL GTN 750 W/O DME	
		1		35	E2006-11-9-011 WIRING DIAGRAM, GTX 345R TRANSPONDER GTN 750/650 W/ DME	
		1		34	E2006-11-7-1 WIRING DIAGRAM, KN63 DME	
	1	1	1	33	E2006-11-5-1 WIRING DIAGRAM, GRA 5500 RAD ALT	
	1			32	E2006-11-3-015 WIRING DIAGRAM, GTN 750XI AND 650XI GTN 750/650 W/O DME	
		1		31	E2006-11-3-013 WIRING DIAGRAM, GTN 750XI AND 650XI DUAL GTN 750 W/O DME	
		1		30	E2006-11-3-011 WIRING DIAGRAM, GTN 750XI AND 650XI GTN 750/650 W/ DME	
	1			29	E2006-11-1-015 WIRING DIAGRAM, GARMIN G500TXI GTN 750/650 W/O DME	
		1		28	E2006-11-1-013 WIRING DIAGRAM, GARMIN G500TXI DUAL GTN 750 W/O DME	
		1		27	E2006-11-1-011 WIRING DIAGRAM, GARMIN G500TXI GTN 750/650 W/ DME	
	1	1	1	26	E2006-01-17-1 INSTALLATION, PITOT STATIC SYSTEM	

BILL OF MATERIALS

	1		25	E212-5004-013	INSTALLATION, CAMERA PROVISIONS	SPLITTER 2
	1		24	E212-5004-011	INSTALLATION, CAMERA PROVISIONS	SPLITTER 1 AND CONVERTER
1	1		23	E212-5003-013	INSTALLATION, SXM ANTENNA	GA 55A
1	1		22	E212-5003-011	INSTALLATION, SXM RECEIVER	GDL 69AH
		1	21	E2006-01-16-1	INSTALLATION, ADAPTER	GAD 43
1	1	1	20	E2006-01-15-1	INSTALLATION, ANTENNA (DME / XPDR)	CI 105
		1	19	E2006-01-14-1	INSTALLATION, DME	KN 63
1	1	1	18	E2006-01-13-3	INSTALLATION, RAD ALT ANTENNA, FS 300.00	S67-2002
1	1	1	17	E2006-01-13-1	INSTALLATION, RAD ALT ANTENNA, FS 280.00	S67-2002
1	1	1	16	E2006-01-12-1	INSTALLATION, RAD ALT	GRA 5500
1	1	1	15	E2006-01-11-3	INSTALLATION, TCAS I ANTENNA, BOTTOM	GA58
1	1	1	14	E2006-01-11-1	INSTALLATION, TCAS I ANTENNA, TOP	GA58
1	1	1	13	E2006-01-10-1	INSTALLATION, TCAS I	GTS 855
		1	12	E2006-01-9-1	INSTALLATION, XPDR ANTENNA	CI 105
1	1	1	11	E2006-01-8-1	INSTALLATION, XPDR	GTX 345R
1	1	1	10	E2006-01-7-1	INSTALLATION, COMM 2 ANTENNA	CI 292-2
1	1	1	9	E2006-01-6-1	INSTALLATION, GPS/COMM 1 ANTENNA	CI 2480-200
1	1	1	8	E2006-01-5-1	INSTALLATION, OAT SENSORS	GTP 59
1	1	1	7	E2006-01-4-1	INSTALLATION, GPS 2 ANTENNA	GA35, TGB MOUNT
1	1	1	6	E2006-01-3-3	INSTALLATION, MAGNETOMETER, BS 164.23	GMU 44
1	1	1	5	E2006-01-3-1	INSTALLATION, MAGNETOMETER, BS 122.33	GMU 44
1	1	1	4	E2006-01-2-2	INSTALLATION, ADAHRS RH	GSU 75H
1	1	1	3	E2006-01-2-1	INSTALLATION, ADAHRS LH	GSU 75H
		1	2	E2006-01-1-3	INSTALLATION, INSTRUMENT PANEL	WITH ACP CUT-OUTS
1		1	1	E2006-01-1-1	INSTALLATION, INSTRUMENT PANEL	WITH KNEE CUT-OUT
				-023	AVIONICS UPGRADE, EAGLE SINGLE	MSN: 35034, 35048, 35060, 35088
				-021	AVIONICS UPGRADE, EAGLE SINGLE	MSN: 30759
				-019	AVIONICS UPGRADE, EAGLE SINGLE	MSN: 31265

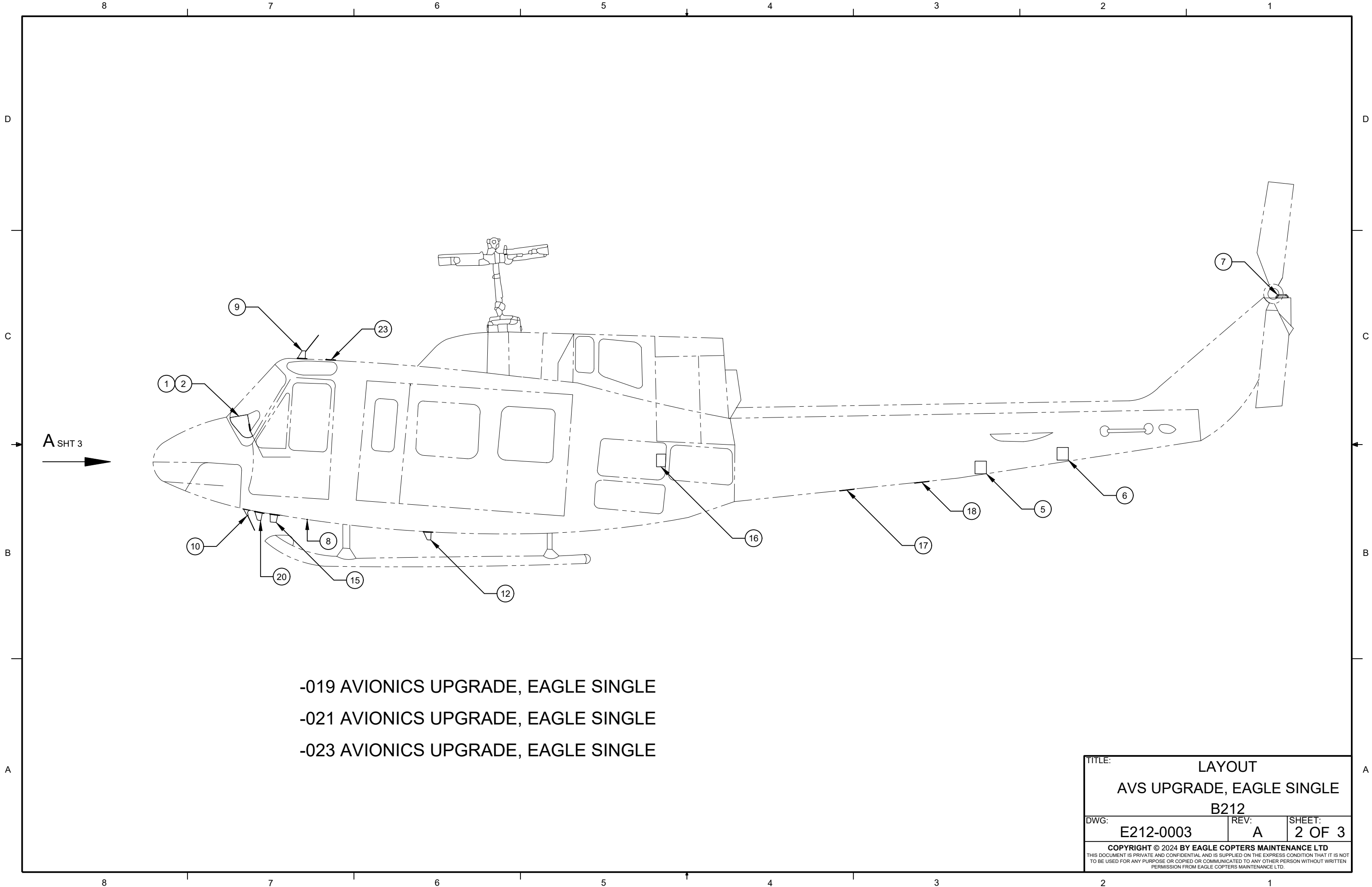
BILL OF MATERIALS

PREPARED	JP
REVIEWED	NF
RELEASED	JP
SCALE:	NTS



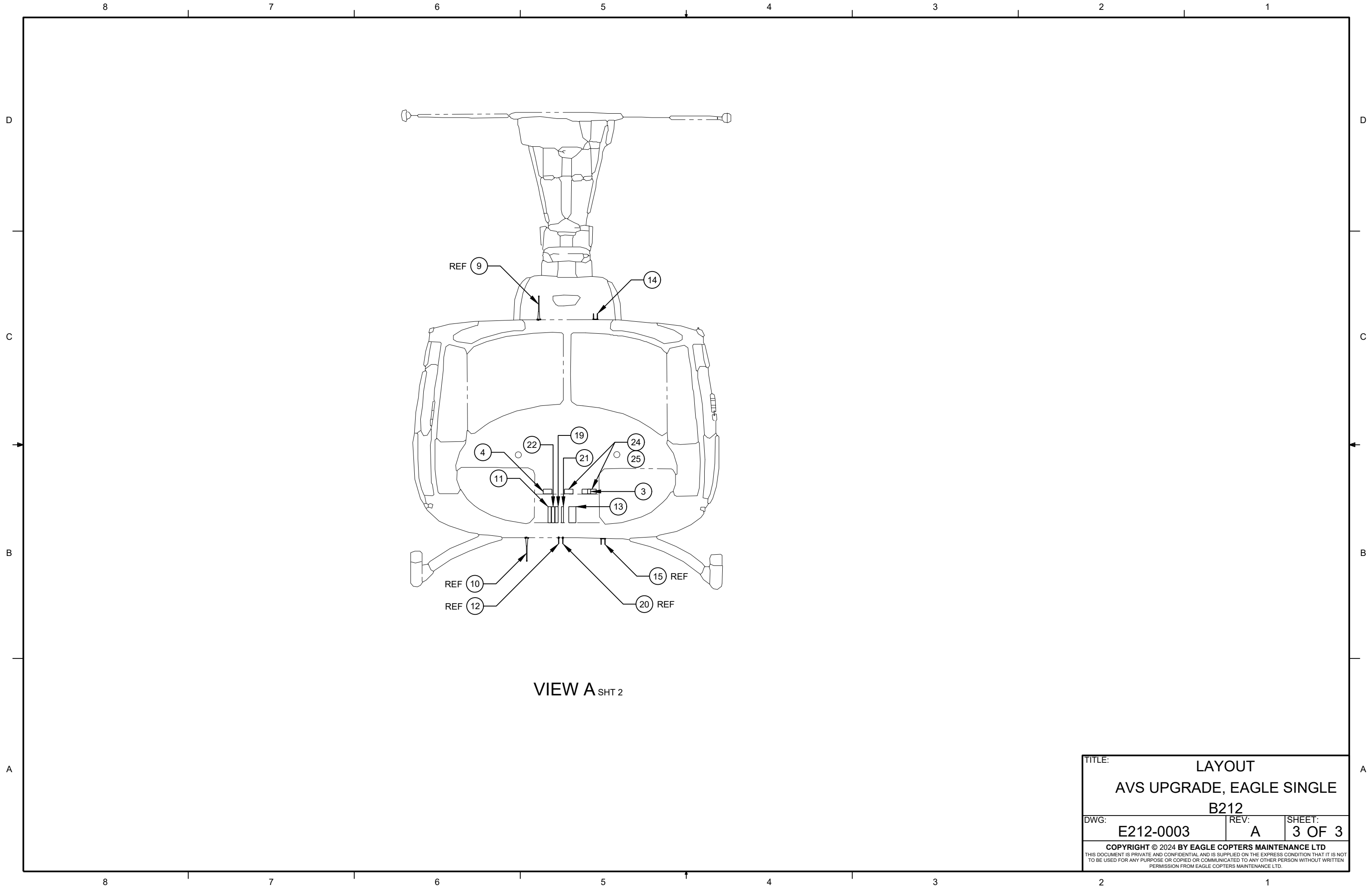
TITLE:	LAYOUT AVS UPGRADE, EAGLE SINGLE B212	DWG:	E212-0003
REV:	A	SHEET:	1 OF 3

THIS DRAWING IS UNCONTROLLED UNLESS OPENED DIRECTLY FROM ECML'S CONTROLLED REPOSITORY



-019 AVIONICS UPGRADE, EAGLE SINGLE
 -021 AVIONICS UPGRADE, EAGLE SINGLE
 -023 AVIONICS UPGRADE, EAGLE SINGLE

TITLE: LAYOUT		
AVS UPGRADE, EAGLE SINGLE		
B212		
DWG: E212-0003	REV: A	SHEET: 2 OF 3
<small>COPYRIGHT © 2024 BY EAGLE COPTERS MAINTENANCE LTD THIS DOCUMENT IS PRIVATE AND CONFIDENTIAL AND IS SUPPLIED ON THE EXPRESS CONDITION THAT IT IS NOT TO BE USED FOR ANY PURPOSE OR COPIED OR COMMUNICATED TO ANY OTHER PERSON WITHOUT WRITTEN PERMISSION FROM EAGLE COPTERS MAINTENANCE LTD.</small>		



VIEW A_{SHT 2}

TITLE:		
LAYOUT AVS UPGRADE, EAGLE SINGLE B212		
DWG:	REV:	SHEET:
E212-0003	A	3 OF 3
<small>COPYRIGHT © 2024 BY EAGLE COPTERS MAINTENANCE LTD THIS DOCUMENT IS PRIVATE AND CONFIDENTIAL AND IS SUPPLIED ON THE EXPRESS CONDITION THAT IT IS NOT TO BE USED FOR ANY PURPOSE OR COPIED OR COMMUNICATED TO ANY OTHER PERSON WITHOUT WRITTEN PERMISSION FROM EAGLE COPTERS MAINTENANCE LTD.</small>		