

REV	DESCRIPTION	DATE
A	INITIAL RELEASE	15-08-2024

\_\_\_\_\_ NEW WIRE / UNIT  
 - - - - - EXISTING WIRE / UNIT

NOTES:

- PERFORM ALL WORK IN ACCORDANCE WITH BELL HELICOPTERS STANDARD PRACTICES MANUAL BHT-ELEC-SPM.
- ALL NEW UNSHIELDED WIRE USE M22759/41-(XX)-9 OR EQUIVALENT TYPE WIRE. (M22759/41-(XX)-9 IS NOT INTENDED TO BE USED IN SOLDER APPLICATIONS, SOLDERABILITY CAN BE ACHIEVED WITH THE PROPER SOLDER. USE CRIMP SPLICES FOR REPAIR). ALL WIRES 22 AWG UNLESS OTHERWISE SPECIFIED BY WIRE CODE. ALL JUMPERS TO BE LESS THAN 6 INCHES.
- ALL NEW SHIELDED WIRE USE M27500-(XX)SM(X)N23 OR EQUIVALENT TYPE WIRE. (M27500-(XX)SM(X)N23 IS NOT INTENDED TO BE USED IN SOLDER APPLICATIONS, SOLDERABILITY CAN BE ACHIEVED WITH THE PROPER SOLDER. USE CRIMP SPLICES FOR REPAIR). SOLDER SLEEVES SHALL USE SN96 SOLDER, USE P/N S200-X-00 OR EQUIVALENT.
- ALL AIRFRAME GROUNDS SHALL BE VIA LUG OR GROUNDING BLOCK AND PROVIDE SEPARATE GROUND STUD LOCATIONS FOR DC POWER GROUNDS, AC POWER GROUNDS, CHASSIS GROUNDS, SIGNAL GROUNDS AND SHIELD GROUNDS.
- ALL EQUIPMENT BONDING TO ADJACENT AIRFRAME STRUCTURE TO BE 0.003 OHM OR LESS. ALL ELECTRICAL GROUNDING AND BONDING TO BE INSTALLED IN ACCORDANCE WITH THE LATEST REVISION OF BHT-ELEC-SPM CHAPTER 8.
- ALL TERMINALS TO BE INSTALLED IN ACCORDANCE WITH THE LATEST REVISION OF BHT-ELEC-SPM PARAGRAPH 4-9.
- ALL CONNECTORS TO BE INSTALLED IN ACCORDANCE WITH THE LATEST REVISION OF BHT-ELEC-SPM CHAPTER 5. ENSURE ALL UNUSED CONNECTOR CONTACTS ARE FILLED WITH SPARE PINS/SOCKETS OR PLASTIC GROMMET SEALING PLUGS. ENSURE ALL BULKHEAD MOUNTED CONNECTORS ARE PROPERLY BONDED TO AIRFRAME.
- ENSURE ALL SWITCHES, CIRCUIT BREAKERS, AND REMOTE MOUNTED BOXES ARE LABELED WITH A CONSISTENT SIZE, FONT, COLOR, BACKGROUND AND ARE ILLUMINATED CONSISTENT AS EXISTING LABELS.
- ROUTE ALL WIRES AND CABLES WITH EXISTING WIRE ROUTES WHERE POSSIBLE AND CLAMP IN ACCORDANCE WITH THE LATEST REVISION OF BHT-ELEC-SPM CHAPTER 6. WIRES MUST BE ROUTED WITH A MINIMUM OF 6 INCHES OF SEPARATION FROM OXYGEN AND FLUID LINES (MIN 2 INCHES IF WIRES IN CONDUIT).

10. INSTALLED IAW ONBOARD SYSTEM INTERNATIONAL CARGO HOOK KIT STC SR00713SE.

11. INSTALLED IAW BELL'S CARGO HOOK ASSEMBLY P/N: 204-072-103.

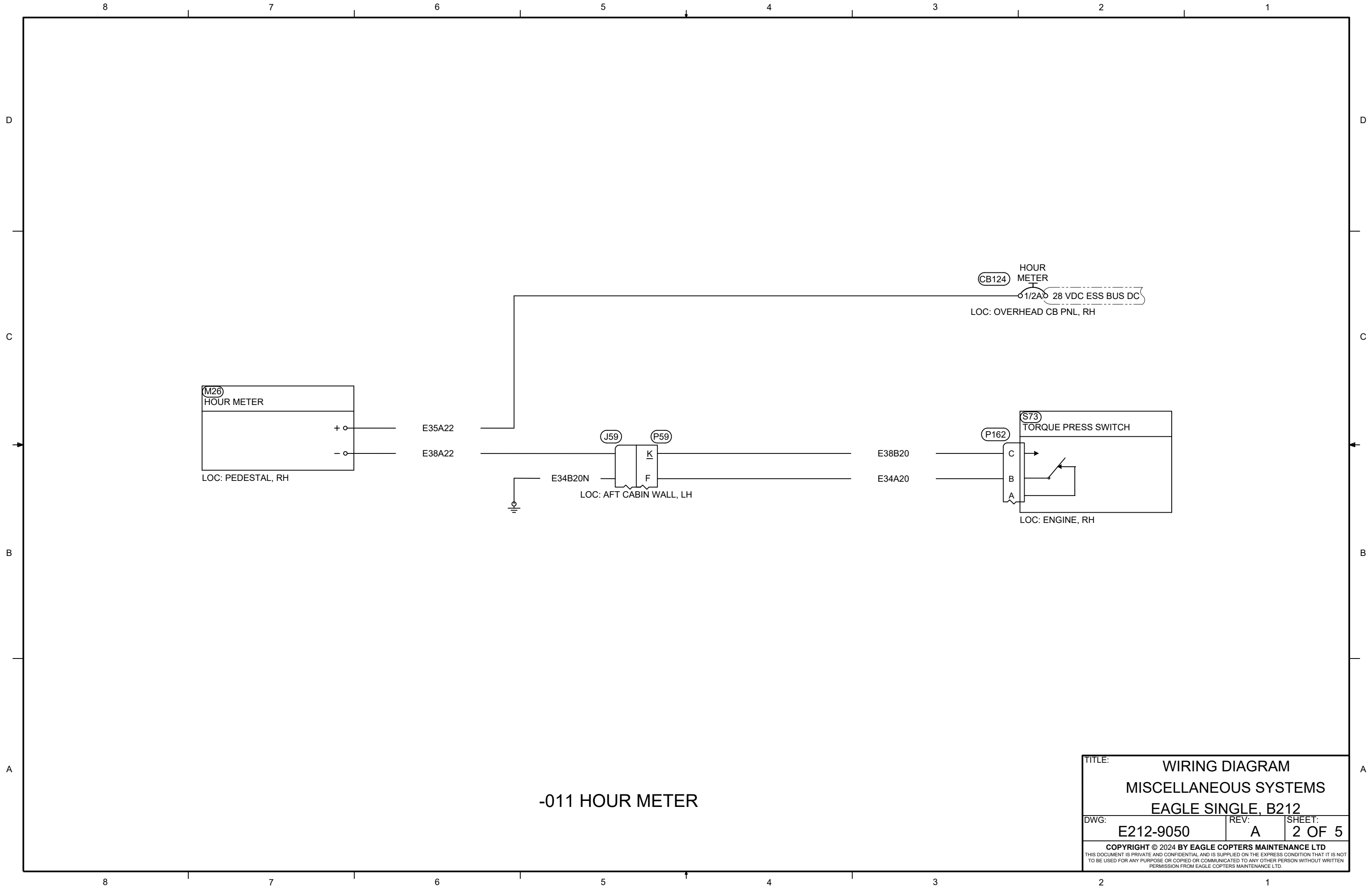
-017	DUAL SWITCH CARGO RELEASE	
-015	CARGO RELEASE	
-013	PILOT & CO PILOT CLOCKS	
-011	HOUR METER	
PART NUMBER	DESCRIPTION	REMARKS
BILL OF MATERIALS		

PREPARED	NF
REVIEWED	CP
RELEASED	JP
SCALE:	NTS



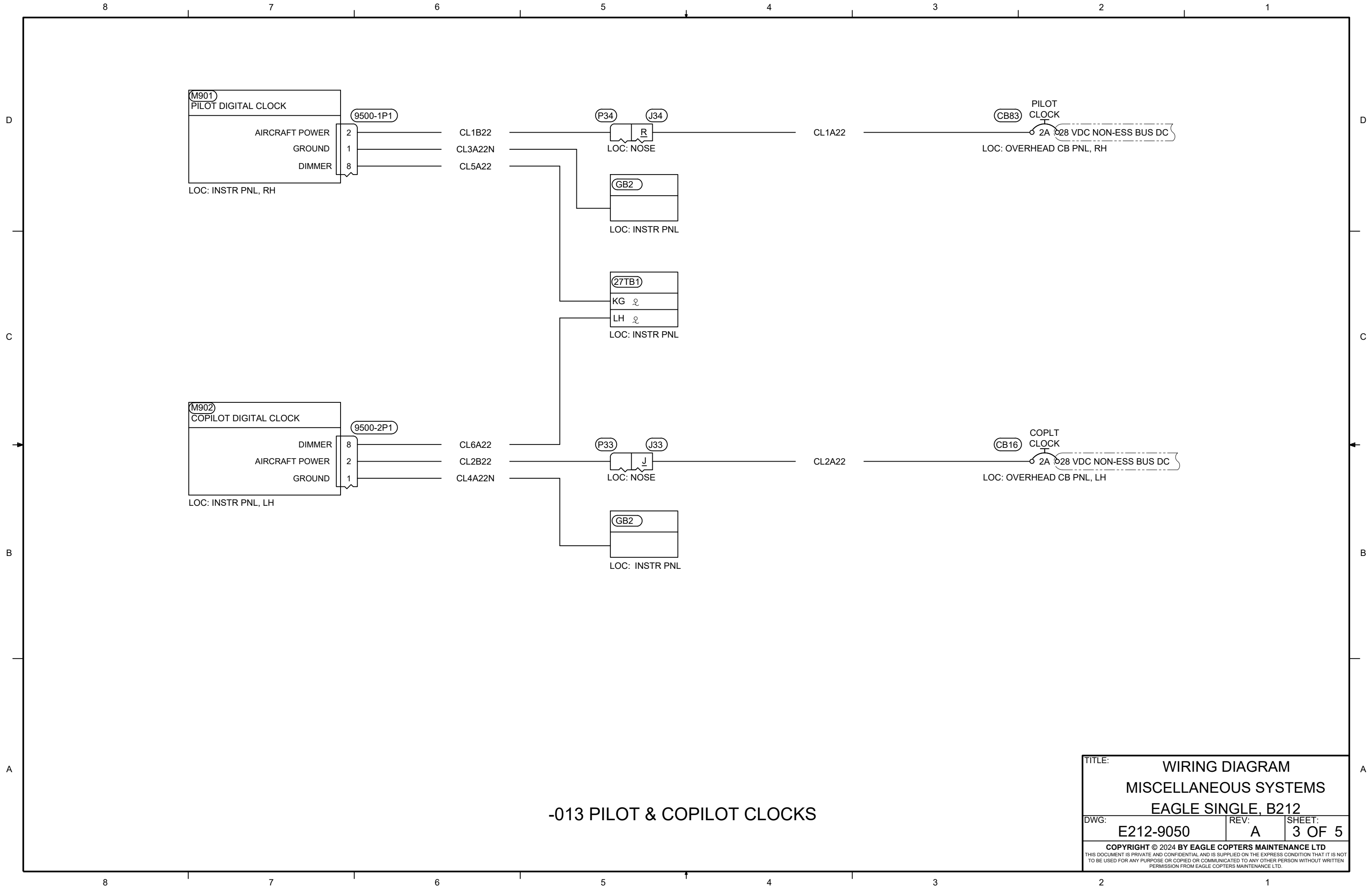
TITLE: WIRING DIAGRAM MISCELLANEOUS SYSTEMS EAGLE SINGLE, B212		DWG: E212-9050
REV: A	SHEET: 1 OF 5	

THIS DRAWING IS UNCONTROLLED UNLESS OPENED DIRECTLY FROM ECML'S CONTROLLED REPOSITORY



-011 HOUR METER

TITLE:		
WIRING DIAGRAM MISCELLANEOUS SYSTEMS EAGLE SINGLE, B212		
DWG:	REV:	SHEET:
E212-9050	A	2 OF 5
<small>COPYRIGHT © 2024 BY EAGLE COPTERS MAINTENANCE LTD THIS DOCUMENT IS PRIVATE AND CONFIDENTIAL AND IS SUPPLIED ON THE EXPRESS CONDITION THAT IT IS NOT TO BE USED FOR ANY PURPOSE OR COPIED OR COMMUNICATED TO ANY OTHER PERSON WITHOUT WRITTEN PERMISSION FROM EAGLE COPTERS MAINTENANCE LTD.</small>		



**M901**  
PILOT DIGITAL CLOCK

AIRCRAFT POWER 2  
GROUND 1  
DIMMER 8

9500-1P1

LOC: INSTR PNL, RH

**M902**  
COPILOT DIGITAL CLOCK

DIMMER 8  
AIRCRAFT POWER 2  
GROUND 1

9500-2P1

LOC: INSTR PNL, LH

CL1B22  
CL3A22N  
CL5A22

CL6A22  
CL2B22  
CL4A22N

P34 J34  
R  
LOC: NOSE

P33 J33  
J  
LOC: NOSE

GB2  
LOC: INSTR PNL

27TB1  
KG  
LH  
LOC: INSTR PNL

GB2  
LOC: INSTR PNL

CL1A22

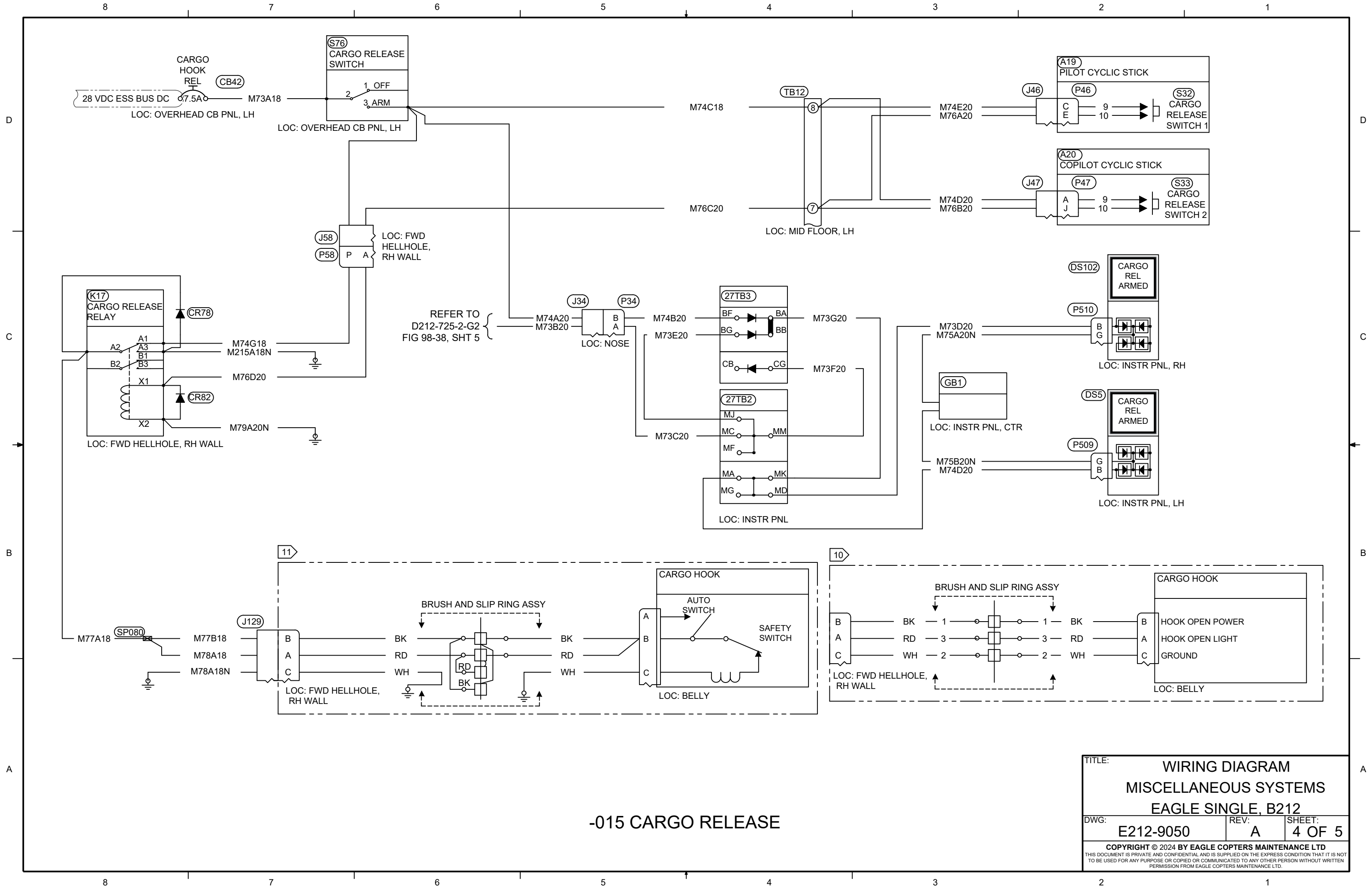
CL2A22

PILOT CLOCK  
CB83  
2A 28 VDC NON-ESS BUS DC  
LOC: OVERHEAD CB PNL, RH

COPLT CLOCK  
CB16  
2A 28 VDC NON-ESS BUS DC  
LOC: OVERHEAD CB PNL, LH

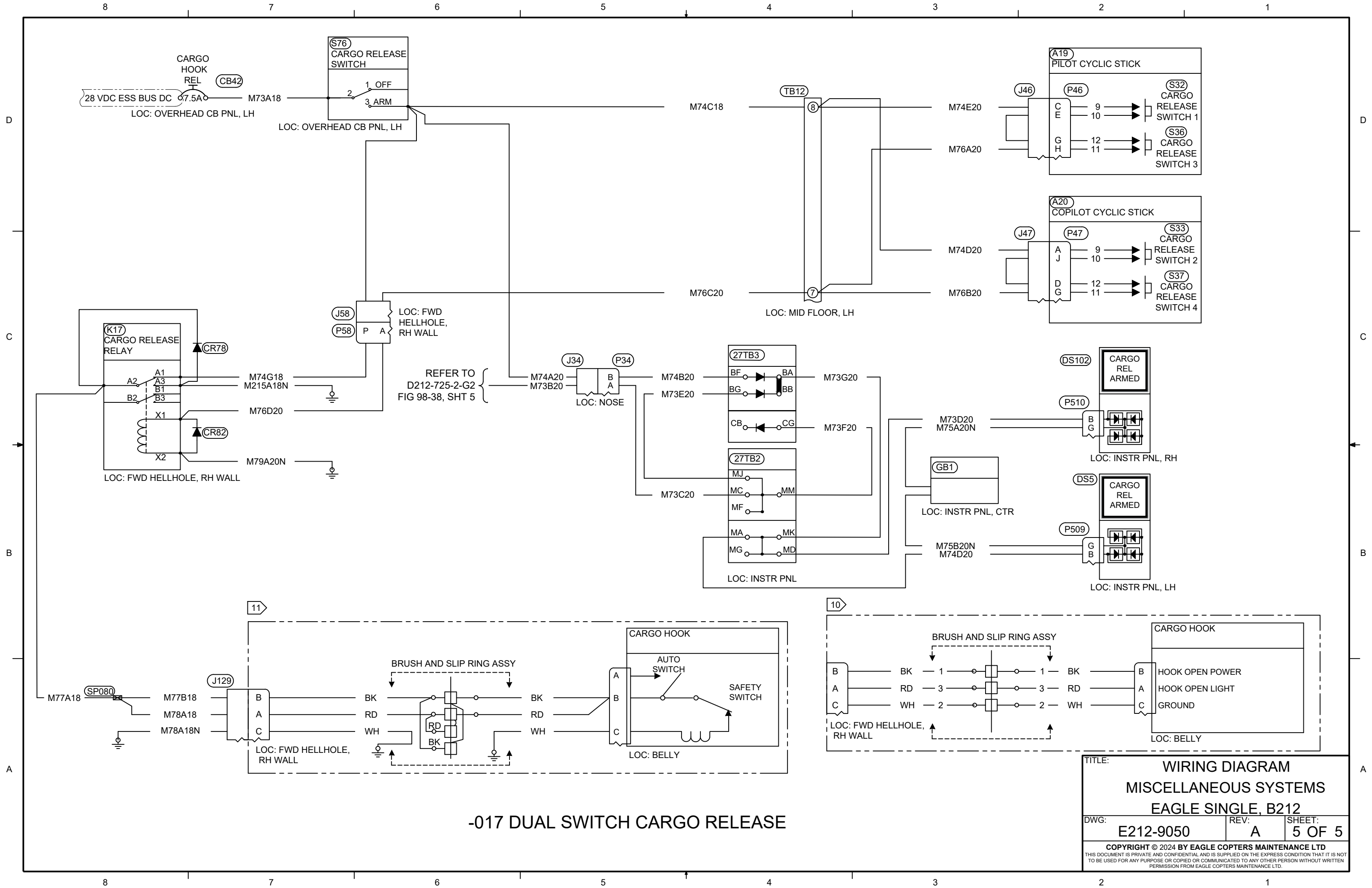
**-013 PILOT & COPILOT CLOCKS**

TITLE: WIRING DIAGRAM		
MISCELLANEOUS SYSTEMS		
EAGLE SINGLE, B212		
DWG: E212-9050	REV: A	SHEET: 3 OF 5
<small>COPYRIGHT © 2024 BY EAGLE COPTERS MAINTENANCE LTD THIS DOCUMENT IS PRIVATE AND CONFIDENTIAL AND IS SUPPLIED ON THE EXPRESS CONDITION THAT IT IS NOT TO BE USED FOR ANY PURPOSE OR COPIED OR COMMUNICATED TO ANY OTHER PERSON WITHOUT WRITTEN PERMISSION FROM EAGLE COPTERS MAINTENANCE LTD.</small>		



**-015 CARGO RELEASE**

TITLE:		
<b>WIRING DIAGRAM</b>		
<b>MISCELLANEOUS SYSTEMS</b>		
<b>EAGLE SINGLE, B212</b>		
DWG:	REV:	SHEET:
<b>E212-9050</b>	<b>A</b>	<b>4 OF 5</b>
<small>COPYRIGHT © 2024 BY EAGLE COPTERS MAINTENANCE LTD          THIS DOCUMENT IS PRIVATE AND CONFIDENTIAL AND IS SUPPLIED ON THE EXPRESS CONDITION THAT IT IS NOT          TO BE USED FOR ANY PURPOSE OR COPIED OR COMMUNICATED TO ANY OTHER PERSON WITHOUT WRITTEN          PERMISSION FROM EAGLE COPTERS MAINTENANCE LTD.</small>		



**-017 DUAL SWITCH CARGO RELEASE**

TITLE: **WIRING DIAGRAM**  
**MISCELLANEOUS SYSTEMS**  
**EAGLE SINGLE, B212**

DWG: **E212-9050**    REV: **A**    SHEET: **5 OF 5**

COPYRIGHT © 2024 BY EAGLE COPTERS MAINTENANCE LTD  
 THIS DOCUMENT IS PRIVATE AND CONFIDENTIAL AND IS SUPPLIED ON THE EXPRESS CONDITION THAT IT IS NOT  
 TO BE USED FOR ANY PURPOSE OR COPIED OR COMMUNICATED TO ANY OTHER PERSON WITHOUT WRITTEN  
 PERMISSION FROM EAGLE COPTERS MAINTENANCE LTD.