

D

C

B

A

8

7

6

5

4

3

2

1

REV	DESCRIPTION	DATE
A	INITIAL RELEASE	11-12-2022
B	ADDED -013 CONFIGURATION	24-09-2024
C	REVISED GA55 CONNECTOR AND ADDED ITEM 10	02-05-2025

NOTES:

1. THIS DRAWING IS INTENDED AS A REFERENCE ONLY. IT IS THE RESPONSIBILITY OF THE USER TO DETERMINE ACCEPTABILITY.
2. PERFORM ALL WORK IN ACCORDANCE WITH BELL HELICOPTER STANDARD PRACTICES MANUAL BHT-ELEC-SPM.
3. ALL NEW UNSHIELDED WIRE USE M22759/41-(XX)-9 OR EQUIVALENT TYPE WIRE. (M22759/41-(XX)-9 IS NOT INTENDED TO BE USED IN SOLDER APPLICATIONS, SOLDERABILITY CAN BE ACHIEVED WITH THE PROPER SOLDER. USE CRIMP SPLICES FOR REPAIR). ALL WIRES 22 AWG UNLESS OTHERWISE SPECIFIED BY WIRE CODE. ALL JUMPERS TO BE LESS THAN 6 INCHES.
4. ALL NEW SHIELDED WIRE USE M27500-(XX)SM(X)N23 OR EQUIVALENT TYPE WIRE. (M27500-(XX)SM(X)N23 IS NOT INTENDED TO BE USED IN SOLDER APPLICATIONS, SOLDERABILITY CAN BE ACHIEVED WITH THE PROPER SOLDER. USE CRIMP SPLICES FOR REPAIR). SOLDER SLEEVES SHALL USE SN96 SOLDER, USE P/N S200-X-00 OR EQUIVALENT.
5. ALL AIRFRAME GROUNDS SHALL BE VIA AMP LUG OR GROUNDING BLOCK AND PROVIDE SEPARATE GROUND STUD LOCATIONS FOR DC POWER GROUNDS, AC POWER GROUNDS, CHASSIS GROUNDS, SIGNAL GROUNDS AND SHIELD GROUNDS.
6. ALL EQUIPMENT BONDING TO ADJACENT AIRFRAME STRUCTURE TO BE 0.003 OHM OR LESS. ALL ELECTRICAL GROUNDING AND BONDING TO BE INSTALLED IN ACCORDANCE WITH THE LATEST REVISION OF BHT-ELEC-SPM CHAPTER 8.
7. ALL TERMINALS TO BE INSTALLED IN ACCORDANCE WITH THE LATEST REVISION OF BHT-ELEC-SPM PARAGRAPH 4-9.
8. ALL CONNECTORS TO BE INSTALLED IN ACCORDANCE WITH THE LATEST REVISION OF BHT-ELEC-SPM CHAPTER 5 AND / OR CIRCULAR CONNECTOR INSTALLATION INSTRUCTIONS (GARMIN DOCUMENT 190-00313-12). ENSURE ALL UNUSED CONNECTOR CONTACTS ARE FILLED WITH SPARE PINS/sockets OR PLASTIC GROMMET SEALING PLUGS. ENSURE ALL BULKHEAD MOUNTED CONNECTORS ARE PROPERLY BONDED TO AIRFRAME.
9. ENSURE ALL SWITCHES, CIRCUIT BREAKERS, AND REMOTE MOUNTED BOXES ARE LABELED WITH A CONSISTENT SIZE, FONT, COLOR, BACKGROUND AND ARE ILLUMINATED CONSISTENT AS EXISTING LABELS.
10. ROUTE ALL WIRES AND CABLES WITH EXISTING WIRE ROUTES WHERE POSSIBLE AND CLAMP IN ACCORDANCE WITH THE LATEST REVISION OF BHT-ELEC-SPM CHAPTER 6. WIRES MUST BE ROUTED WITH A MINIMUM OF 6 INCHES OF SEPARATION FROM OXYGEN AND FLUID LINES (MIN 2 INCHES IF WIRES IN CONDUIT).
11. INSTALL SYSTEM IN ACCORDANCE WITH THE LATEST REVISION OF THE MANUFACTURER INSTALLATION MANUAL.
12. LOWERCASE LETTER CONNECTOR PIN DESIGNATORS ARE SHOWN AS UNDERLINED UPPERCASE LETTERS.

THIS DRAWING IS UNCONTROLLED UNLESS OPENED DIRECTLY FROM ECML'S CONTROLLED REPOSITORY

8

7

6

5

4

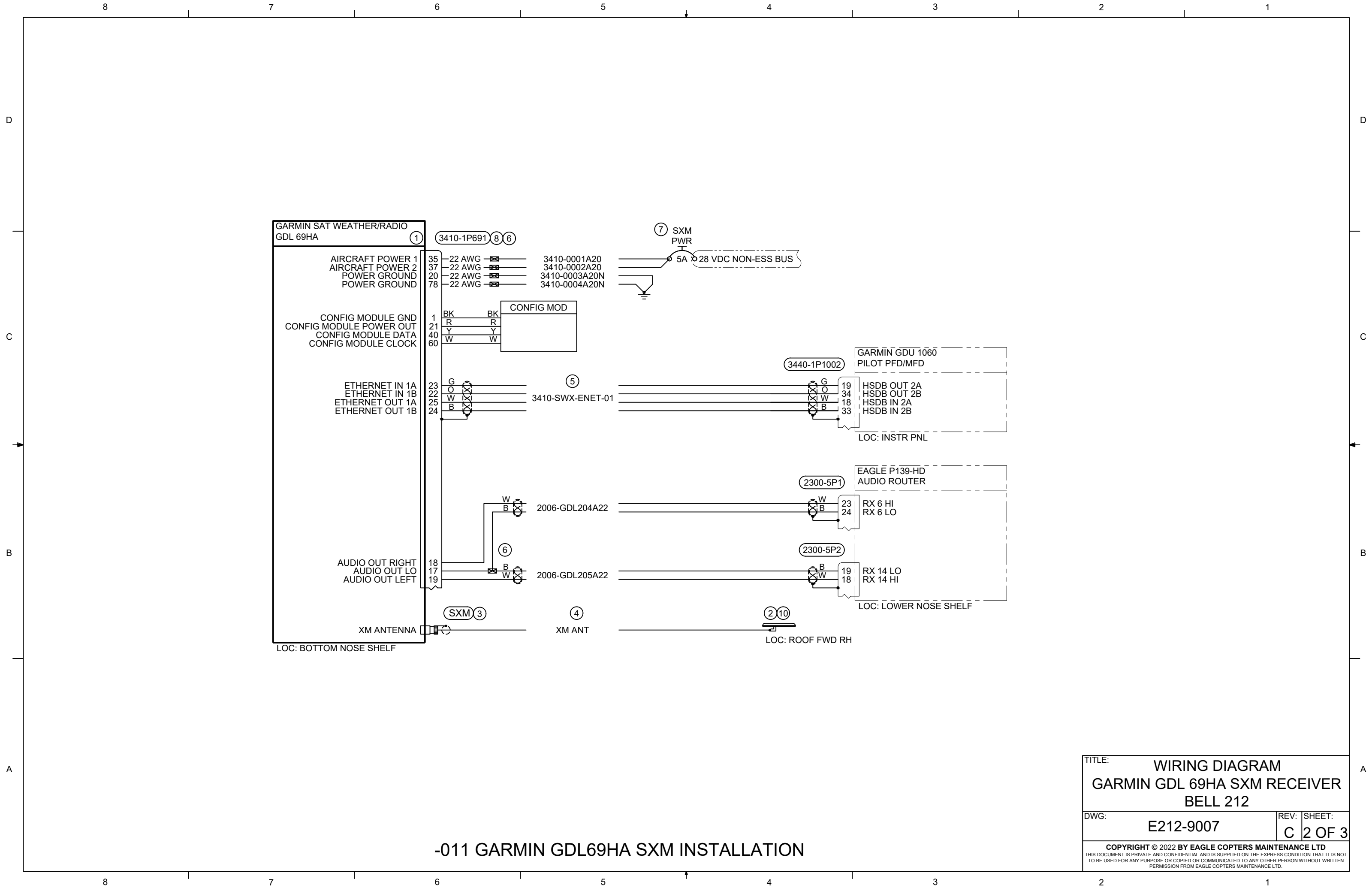
3

2

1

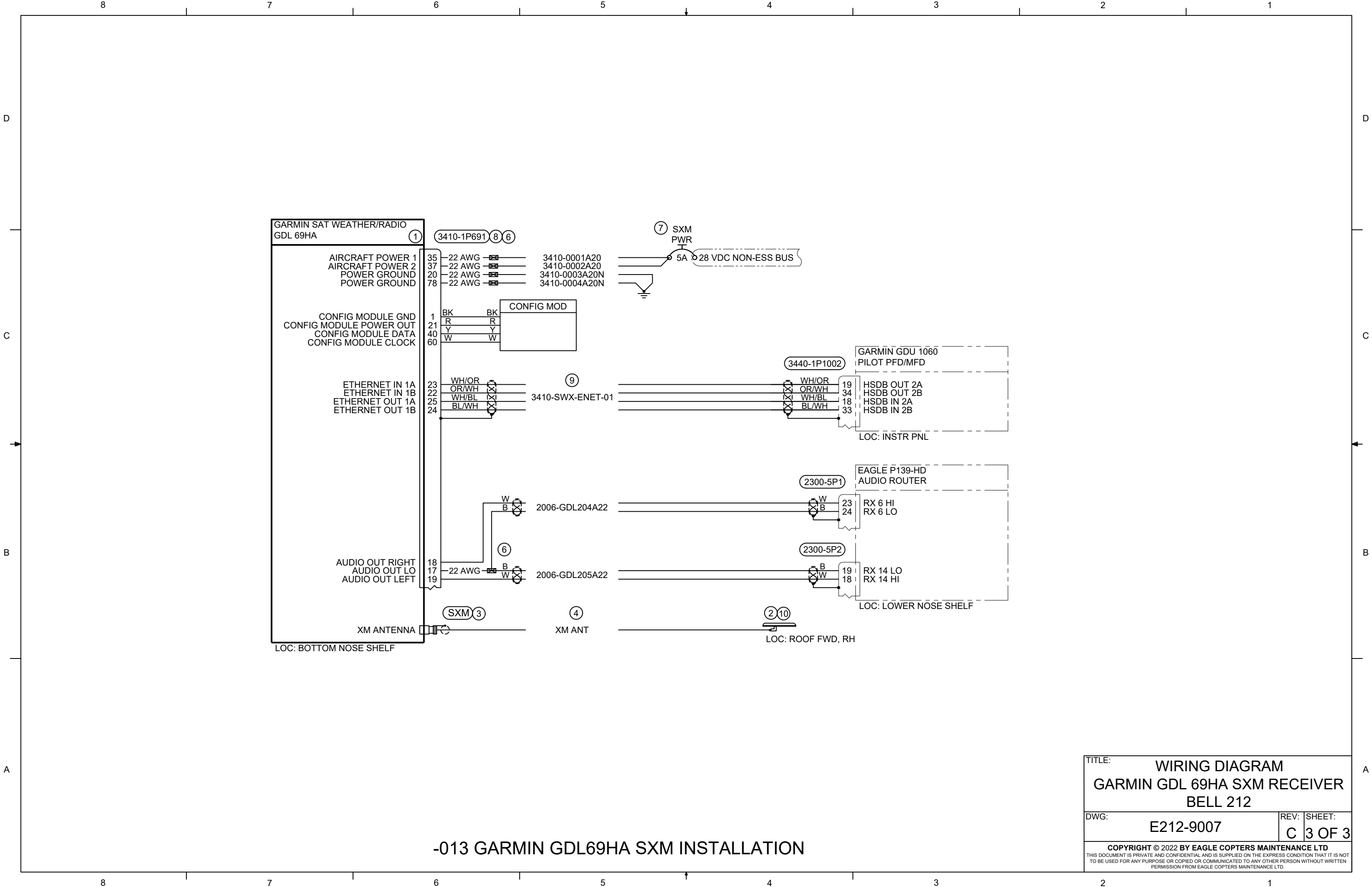
1	1	10	RFT-1218-C1	CONNECTOR, TNC, 90°	RF INDUSTRIES
AR	--	9	392404	CABLE, ETHERNET	CARLISLE
1	1	8	011-00997-10	CONNECTOR KIT	GARMIN
1	1	7	MS26574-5	CIRCUIT BREAKER, 5A	
5	5	6	D-436-83	SPLICE	RAYCHEM
--	AR	5	E40424	CABLE, ETHERNET	PIC
AR	AR	4	RG 142	CABLE, COAX	
1	1	3	122372	CONNECTOR, TNC, 90°	AMPHENOL
1 (REF)	1 (REF)	2	011-01153-00	ANTENNA GA55 XM	GARMIN
1 (REF)	1 (REF)	1	011-03177-35	GARMIN GDL 69AH SXM RECEIVER	GARMIN
<div></div>	<div></div>		-013	GARMIN GDL69HA SXM INSTALLATION	
			-011	GARMIN GDL69HA SXM INSTALLATION	
-013 QTY	-011 QTY	ITEM	PART NUMBER	DESCRIPTION	REMARKS
BILL OF MATERIALS					

PREPARED	DS	 COPYRIGHT ©2022 BY EAGLE COPTERS MAINTENANCE LTD THIS DOCUMENT IS PRIVATE AND CONFIDENTIAL AND IS SUPPLIED ON THE EXPRESS CONDITION THAT IT IS NOT TO BE USED FOR ANY PURPOSE OR COPIED OR COMMUNICATED TO ANY OTHER PERSON WITHOUT WRITTEN PERMISSION FROM EAGLE COPTERS MAINTENANCE LTD.
REVIEWED		
RELEASED		
SCALE:	NTS	
TITLE:		DWG:
WIRING DIAGRAM		E212-9007
GARMIN GDL 69AH SXM RECEIVER		REV:
BELL 212		C
		SHEET:
		1 OF 3



-011 GARMIN GDL69HA SXM INSTALLATION

TITLE: WIRING DIAGRAM GARMIN GDL 69HA SXM RECEIVER BELL 212		
DWG: E212-9007	REV: C	SHEET: 2 OF 3
COPYRIGHT © 2022 BY EAGLE COPTERS MAINTENANCE LTD <small>THIS DOCUMENT IS PRIVATE AND CONFIDENTIAL AND IS SUPPLIED ON THE EXPRESS CONDITION THAT IT IS NOT TO BE USED FOR ANY PURPOSE OR COPIED OR COMMUNICATED TO ANY OTHER PERSON WITHOUT WRITTEN PERMISSION FROM EAGLE COPTERS MAINTENANCE LTD.</small>		



-013 GARMIN GDL69HA SXM INSTALLATION

TITLE: WIRING DIAGRAM  
GARMIN GDL 69HA SXM RECEIVER  
BELL 212

DWG: E212-9007  
REV: C  
SHEET: 3 OF 3

COPYRIGHT © 2022 BY EAGLE COPTERS MAINTENANCE LTD  
THIS DOCUMENT IS PRIVATE AND CONFIDENTIAL AND IS SUPPLIED ON THE EXPRESS CONDITION THAT IT IS NOT  
TO BE USED FOR ANY PURPOSE OR COPIED OR COMMUNICATED TO ANY OTHER PERSON WITHOUT WRITTEN  
PERMISSION FROM EAGLE COPTERS MAINTENANCE LTD.