

REV	DESCRIPTION	DATE
A	NEW ISSUE	09-09-2021
B	ITEM 1 PN CHANGED, NOTE 17 REMOVED, TCAS COMPONENTS DESCRIPTION AND CB LABEL CHANGED FROM TAS TO TCAS. ADDED -013 NO DME INSTALLED CONFIGURATION	17-12-2022
C	MINOR EDITORIAL CHANGES AND REPLACED ETHERNET CABLE WITH E40424 FOR -013 CONFIGURATION AND ADDED -015 CONFIGURATION	20-08-2024
D	INCORPORATED ECN-212-040 REV A. ADDED ITEM 19 TO BOM	22-08-2025

\_\_\_\_\_ NEW WIRE / UNIT  
 - - - - - EXISTING WIRE / UNIT

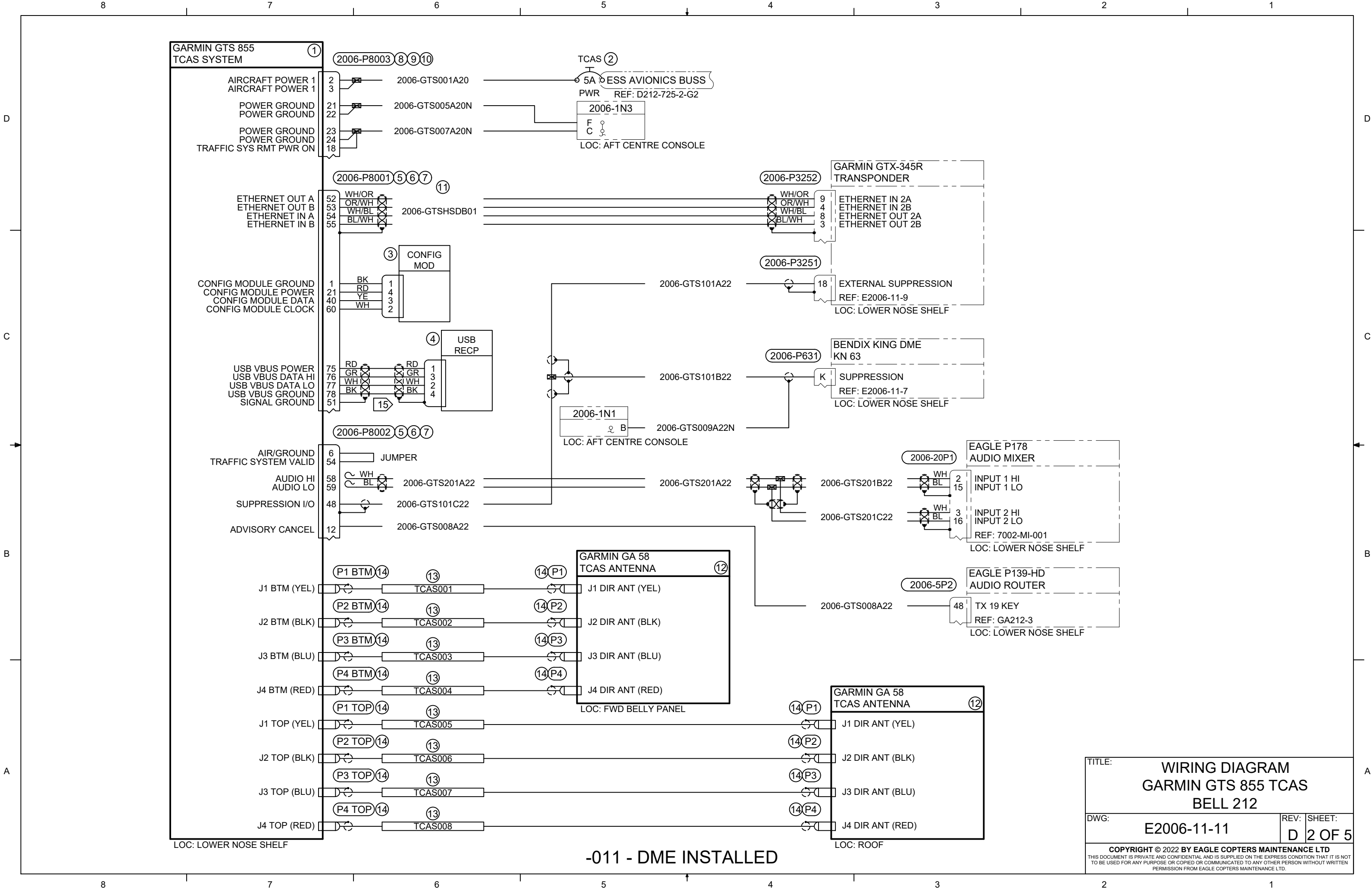
**NOTES:**

- PERFORM ALL WORK IN ACCORDANCE WITH BELL HELICOPTER STANDARD PRACTICES MANUAL BHT-ELEC-SPM.
- ALL NEW UNSHIELDED WIRE USE M22759/41-(XX)-9 OR EQUIVALENT TYPE WIRE. (M22759/41-(XX)-9 IS NOT INTENDED TO BE USED IN SOLDER APPLICATIONS, SOLDERABILITY CAN BE ACHIEVED WITH THE PROPER SOLDER. USE CRIMP SPLICES FOR REPAIR). ALL WIRES 22 AWG UNLESS OTHERWISE SPECIFIED BY WIRE CODE. ALL JUMPERS TO BE LESS THAN 6 INCHES.
- ALL NEW SHIELDED WIRE USE M27500-(XX)SM(X)N23 OR EQUIVALENT TYPE WIRE. (M27500-(XX)SM(X)N23 IS NOT INTENDED TO BE USED IN SOLDER APPLICATIONS, SOLDERABILITY CAN BE ACHIEVED WITH THE PROPER SOLDER. USE CRIMP SPLICES FOR REPAIR). SOLDER SLEEVES SHALL USE SN96 SOLDER, USE P/N S200-X-00 OR EQUIVALENT.
- ALL SHIELD TERMINATIONS SHALL BE INSTALLED PER MIL-S-83519 OR EQUIVALENT. SHIELD TERMINATIONS SHOWN AS "DAISY-CHAINED" ARE FOR DRAWING CLARITY ONLY. INDIVIDUAL SHIELD EXTENSIONS SHALL BE SPLICED AT A COMMON TIE POINT TO THE TERMINATING WIRES. THE BACK SHELL OR AIRFRAME GROUND MAY BE USED.
- ALL AIRFRAME GROUNDS SHALL BE VIA AMP LUG OR GROUNDING BLOCK AND PROVIDE SEPARATE GROUND STUD LOCATIONS FOR DC POWER GROUNDS, AC POWER GROUNDS, CHASSIS GROUNDS, SIGNAL GROUNDS AND SHIELD GROUNDS.
- ALL EQUIPMENT BONDING TO ADJACENT AIRFRAME STRUCTURE TO BE 0.0025 OHM OR LESS. ALL ELECTRICAL GROUNDING AND BONDING TO BE INSTALLED IN ACCORDANCE WITH THE LATEST REVISION OF BHT-ELEC-SPM CHAPTER 8.
- ALL TERMINALS TO BE INSTALLED IN ACCORDANCE WITH THE LATEST REVISION OF BHT-ELEC-SPM CHAPTER 4 PARAGRAPH 4-9.
- ALL CONNECTORS TO BE INSTALLED IN ACCORDANCE WITH THE LATEST REVISION OF BHT-ELEC-SPM CHAPTER 5. ENSURE ALL UNUSED CONNECTOR CONTACTS ARE FILLED WITH SPARE PINS/SOCKETS OR PLASTIC GROMMET SEALING PLUGS. ENSURE ALL BULKHEAD MOUNTED CONNECTORS ARE PROPERLY BONDED TO AIRFRAME.
- ENSURE ALL SWITCHES, CIRCUIT BREAKERS, AND REMOTE MOUNTED BOXES ARE LABELED WITH A CONSISTENT SIZE, FONT, COLOR, BACKGROUND AND ARE ILLUMINATED CONSISTENT AS EXISTING LABELS.
- ROUTE ALL WIRES AND CABLES WITH EXISTING WIRE ROUTES WHERE POSSIBLE AND CLAMP IN ACCORDANCE WITH THE LATEST REVISION OF BHT-ELEC-SPM CHAPTER 6. WIRES MUST BE ROUTED WITH A MINIMUM OF 6 INCHES OF SEPARATION FROM OXYGEN AND FLUID LINES (MIN 2 INCHES IF WIRES IN CONDUIT).
- INSTALL SYSTEM IN ACCORDANCE WITH THE LATEST REVISION OF THE MANUFACTURERS INSTALLATION MANUAL.
- LOWERCASE LETTER CONNECTOR PIN DESIGNATORS ARE SHOWN AS UNDERLINED UPPERCASE LETTERS.
- AS THE DRAIN WIRE IS UN-INSULATED, A TEFLON SLEEVE (18 AWG OR HIGHER) IS REQUIRED OVER THE EXPOSED AREA BACK TO THE OUTER INSULATION OF THE CABLE. REFERENCE GARMIN GTS 855 INSTALLATION MANUAL, PN: 190-00587-50 REV. M, APPENDIX B, PAGE B-6, NOTE 5.
- EACH SET OF COAX CABLE MUST BE A MATCHING SET WITH EACH INDIVIDUAL CABLE THE SAME LENGTH (WITHIN +/- 6 INCHES) AND THE LENGTH BETWEEN LRU AND ANTENNA NOT TO EXCEED 35 FT.
- INCLUDED IN KIT PN: 011-01360-01
- POWER WIRES NOT TO EXCEED 20 FT FROM A 5A CIRCUIT BREAKER.

5	--	--	19	D-436-85	SPLICE	RAYCHEM	
4	--	--	18	190109	CONNECTOR, 90° STRAIGHT, TNC MALE	PIC	
--	16	--	17	190508	CONNECTOR, STRAIGHT, TNC MALE	PIC	
--	AR	--	16	S67163	CABLE, COAX	PIC	
--	AR	--	15	E40424	CABLE, ETHERNET	PIC	
12	--	16	14	190108	CONNECTOR, STRAIGHT, TNC MALE	PIC	
AR	--	AR	13	S44193	CABLE, COAX	PIC	
REF	REF	REF	12	011-01346-02	GA 58 DIRECTIONAL ANTENNA	GARMIN	
AR	--	AR	11	392404	CABLE, ETHERNET	CARLISLE	
15	1	1	10	011-01855-03	BACKSHELL	GARMIN	
15	1	1	9	330-00853-37	CONNECTOR, PLUG (J8003)	GARMIN	
15	AR	AR	8	336-00022-00	CONTACT, SOCKET	ALT P/N: M39029/63-368	
15	2	2	7	011-01855-04	BACKSHELL	GARMIN	
15	2	2	6	330-00776-78	CONNECTOR, PLUG (J8001/J8002)	GARMIN	
15	AR	AR	5	336-00021-00	CONTACT, PIN	ALT: P/N M39029/58-360	
15	1	1	4	011-01782-00	USB-B PIGTAIL	GARMIN	
	1	1	3	011-00979-20	CONFIGURATION MODULE	GARMIN	
	1	1	2	MS26574-5	CIRCUIT BREAKER, 5A		
	1	1	1	010-00962-10	GTS 855	GARMIN	
				-015	NO DME INSTALLED	CARLISLE ETHERNET CABLE	
				-013	NO DME INSTALLED	PIC ETHERNET CABLE	
				-011	DME INSTALLED		
	-015 QTY-	-013 QTY-	-011 QTY-	ITEM	PART NUMBER	DESCRIPTION	REMARKS

**BILL OF MATERIALS**

PREPARED	gs	 <p>COPYRIGHT ©2022 BY EAGLE COPTERS MAINTENANCE LTD THIS DOCUMENT IS PRIVATE AND CONFIDENTIAL AND IS SUPPLIED ON THE EXPRESS CONDITION THAT IT IS NOT TO BE USED FOR ANY PURPOSE OR COPIED OR COMMUNICATED TO ANY OTHER PERSON WITHOUT WRITTEN PERMISSION FROM EAGLE COPTERS MAINTENANCE LTD.</p>		
REVIEWED	ds			
RELEASED	MP			
SCALE:	NTS			
TITLE:	<b>WIRING DIAGRAM GARMIN GTS 855 TCAS BELL 212</b>		DWG:	E2006-11-11
			REV:	D
			SHEET:	1 OF 5



**GARMIN GTS 855 TCAS SYSTEM** (1)

AIRCRAFT POWER 1  
AIRCRAFT POWER 1

POWER GROUND  
POWER GROUND

POWER GROUND  
POWER GROUND  
TRAFFIC SYS RMT PWR ON

ETHERNET OUT A  
ETHERNET OUT B  
ETHERNET IN A  
ETHERNET IN B

CONFIG MODULE GROUND  
CONFIG MODULE POWER  
CONFIG MODULE DATA  
CONFIG MODULE CLOCK

USB VBUS POWER  
USB VBUS DATA HI  
USB VBUS DATA LO  
USB VBUS GROUND  
SIGNAL GROUND

AIR/GROUND  
TRAFFIC SYSTEM VALID

AUDIO HI  
AUDIO LO

SUPPRESSION I/O

ADVISORY CANCEL

J1 BTM (YEL)  
J2 BTM (BLK)  
J3 BTM (BLU)  
J4 BTM (RED)  
J1 TOP (YEL)  
J2 TOP (BLK)  
J3 TOP (BLU)  
J4 TOP (RED)

LOC: LOWER NOSE SHELF

(2006-P8003) (8) (9) (10)

2006-GTS001A20

2006-GTS005A20N

2006-GTS007A20N

(2006-P8001) (5) (6) (7) (11)

2006-GTSHSDB01

(3) CONFIG MOD

(4) USB RECP

(2006-P8002) (5) (6) (7)

JUMPER

2006-GTS201A22

2006-GTS101C22

2006-GTS008A22

(P1 BTM) (14) (13) (14) (P1)

(P2 BTM) (14) (13) (14) (P2)

(P3 BTM) (14) (13) (14) (P3)

(P4 BTM) (14) (13) (14) (P4)

(P1 TOP) (14) (13) (14) (P1)

(P2 TOP) (14) (13) (14) (P2)

(P3 TOP) (14) (13) (14) (P3)

(P4 TOP) (14) (13) (14) (P4)

TCAS001

TCAS002

TCAS003

TCAS004

TCAS005

TCAS006

TCAS007

TCAS008

TCAS (2)

5A

ESS AVIONICS BUSS

PWR REF: D212-725-2-G2

2006-1N3

F

C

LOC: AFT CENTRE CONSOLE

(2006-P3252)

GARMIN GTX-345R  
TRANSPONDER

ETHERNET IN 2A  
ETHERNET IN 2B  
ETHERNET OUT 2A  
ETHERNET OUT 2B

(2006-P3251)

EXTERNAL SUPPRESSION

REF: E2006-11-9

LOC: LOWER NOSE SHELF

(2006-P631)

BENDIX KING DME  
KN 63

SUPPRESSION

REF: E2006-11-7

LOC: LOWER NOSE SHELF

(2006-20P1)

EAGLE P178  
AUDIO MIXER

INPUT 1 HI  
INPUT 1 LO

INPUT 2 HI  
INPUT 2 LO

REF: 7002-MI-001

LOC: LOWER NOSE SHELF

(2006-5P2)

EAGLE P139-HD  
AUDIO ROUTER

TX 19 KEY

REF: GA212-3

LOC: LOWER NOSE SHELF

2006-1N1

B

2006-GTS009A22N

LOC: AFT CENTRE CONSOLE

GARMIN GA 58  
TCAS ANTENNA (12)

J1 DIR ANT (YEL)  
J2 DIR ANT (BLK)  
J3 DIR ANT (BLU)  
J4 DIR ANT (RED)

LOC: FWD BELLY PANEL

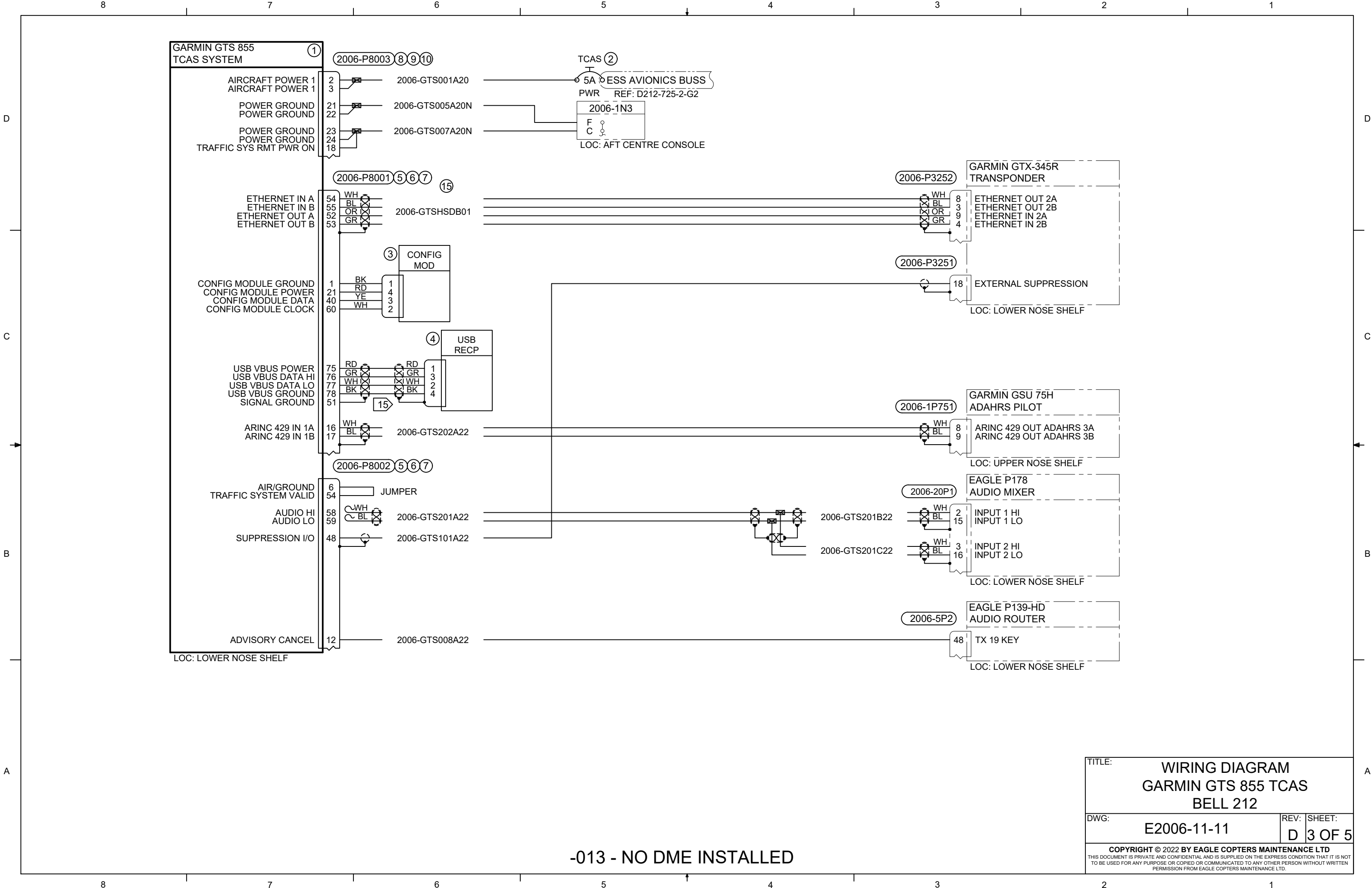
GARMIN GA 58  
TCAS ANTENNA (12)

J1 DIR ANT (YEL)  
J2 DIR ANT (BLK)  
J3 DIR ANT (BLU)  
J4 DIR ANT (RED)

LOC: ROOF

-011 - DME INSTALLED

TITLE:		WIRING DIAGRAM GARMIN GTS 855 TCAS BELL 212	
DWG:	E2006-11-11	REV:	SHEET: D 2 OF 5
<small>COPYRIGHT © 2022 BY EAGLE COPTERS MAINTENANCE LTD THIS DOCUMENT IS PRIVATE AND CONFIDENTIAL AND IS SUPPLIED ON THE EXPRESS CONDITION THAT IT IS NOT TO BE USED FOR ANY PURPOSE OR COPIED OR COMMUNICATED TO ANY OTHER PERSON WITHOUT WRITTEN PERMISSION FROM EAGLE COPTERS MAINTENANCE LTD.</small>			



**GARMIN GTS 855 TCAS SYSTEM** (1)

AIRCRAFT POWER 1  
AIRCRAFT POWER 1

POWER GROUND  
POWER GROUND

POWER GROUND  
POWER GROUND  
TRAFFIC SYS RMT PWR ON

ETHERNET IN A  
ETHERNET IN B  
ETHERNET OUT A  
ETHERNET OUT B

CONFIG MODULE GROUND  
CONFIG MODULE POWER  
CONFIG MODULE DATA  
CONFIG MODULE CLOCK

USB VBUS POWER  
USB VBUS DATA HI  
USB VBUS DATA LO  
USB VBUS GROUND  
SIGNAL GROUND

ARINC 429 IN 1A  
ARINC 429 IN 1B

AIR/GROUND TRAFFIC SYSTEM VALID

AUDIO HI  
AUDIO LO

SUPPRESSION I/O

ADVISORY CANCEL

(206-P8003) (8) (9) (10)

206-GTS001A20

206-GTS005A20N

206-GTS007A20N

(206-P8001) (5) (6) (7) (15)

206-GTSHSDB01

(3) CONFIG MOD

(4) USB RECP

(206-P8002) (5) (6) (7)

JUMPER

206-GTS201A22

206-GTS101A22

206-GTS008A22

TCAS (2)

5A AVIONICS BUSS

PWR REF: D212-725-2-G2

206-1N3

F  
C

LOC: AFT CENTRE CONSOLE

(206-P3252) GARMIN GTX-345R TRANSPONDER

ETHERNET OUT 2A  
ETHERNET OUT 2B  
ETHERNET IN 2A  
ETHERNET IN 2B

(206-P3251) EXTERNAL SUPPRESSION

LOC: LOWER NOSE SHELF

(206-1P751) GARMIN GSU 75H ADAHRS PILOT

ARINC 429 OUT ADAHRS 3A  
ARINC 429 OUT ADAHRS 3B

LOC: UPPER NOSE SHELF

(206-20P1) EAGLE P178 AUDIO MIXER

INPUT 1 HI  
INPUT 1 LO  
INPUT 2 HI  
INPUT 2 LO

LOC: LOWER NOSE SHELF

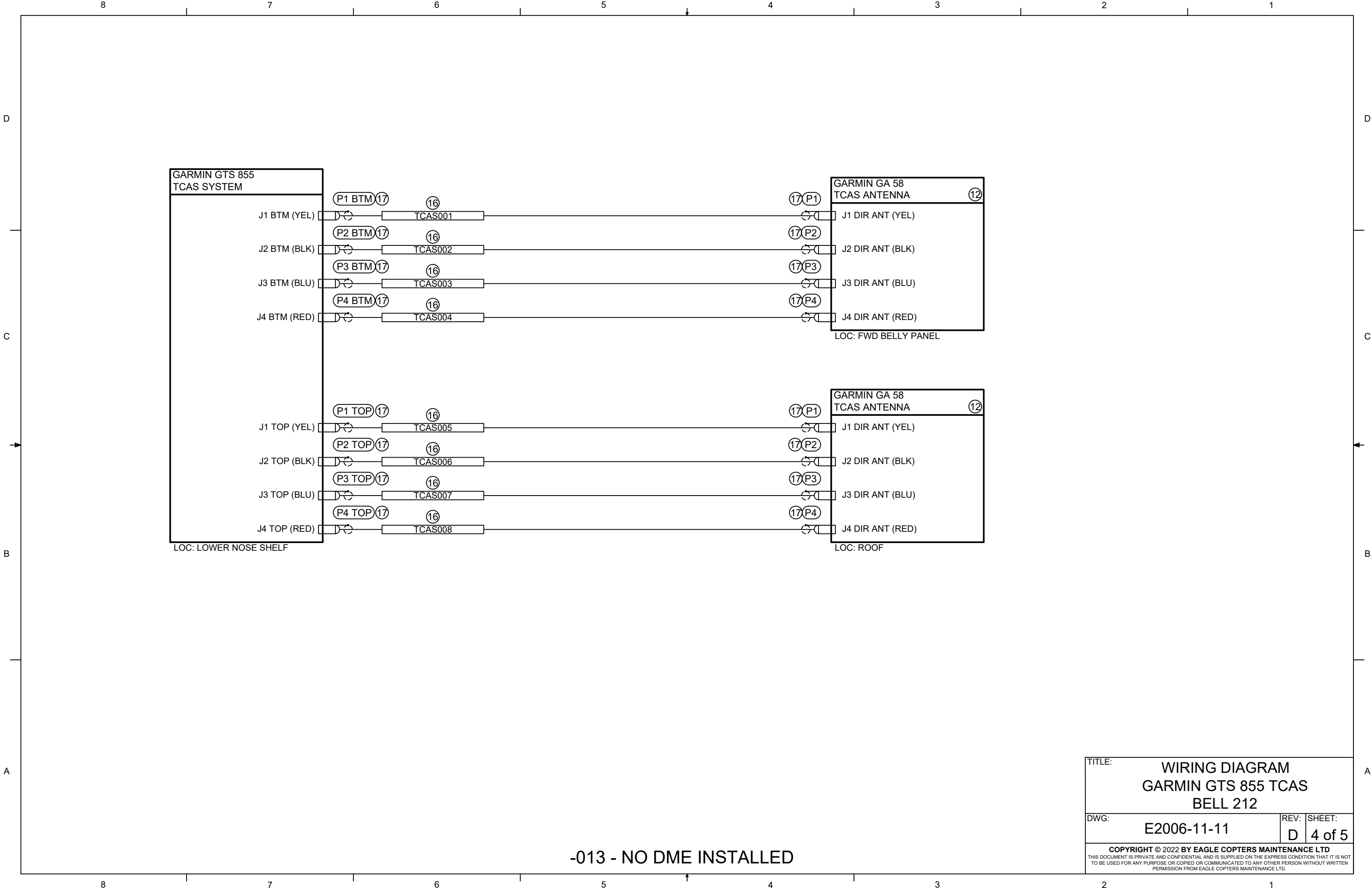
(206-5P2) EAGLE P139-HD AUDIO ROUTER

TX 19 KEY

LOC: LOWER NOSE SHELF

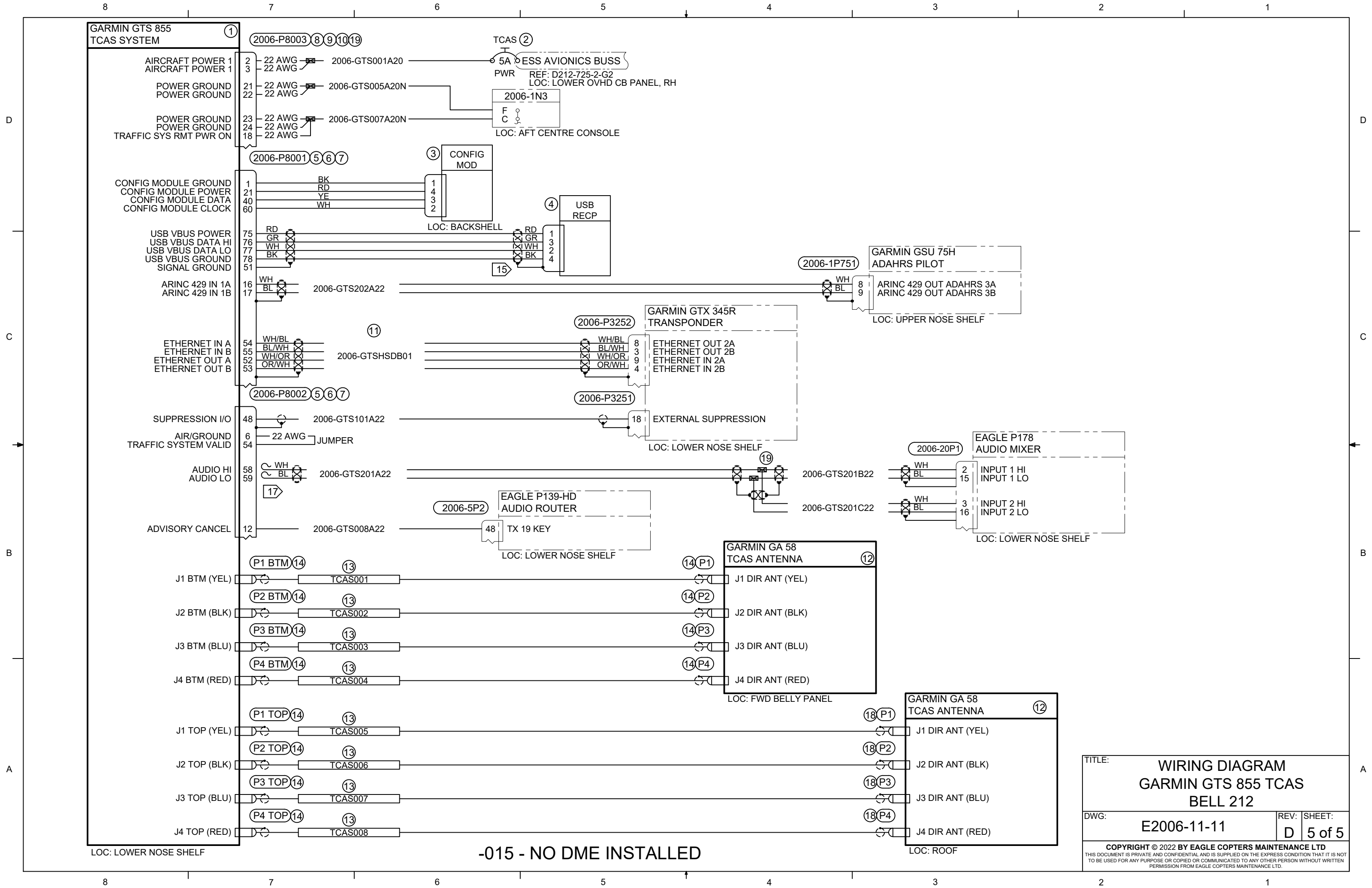
TITLE:		WIRING DIAGRAM GARMIN GTS 855 TCAS BELL 212	
DWG:	E2006-11-11	REV:	SHEET: D 3 OF 5
<small>COPYRIGHT © 2022 BY EAGLE COPTERS MAINTENANCE LTD THIS DOCUMENT IS PRIVATE AND CONFIDENTIAL AND IS SUPPLIED ON THE EXPRESS CONDITION THAT IT IS NOT TO BE USED FOR ANY PURPOSE OR COPIED OR COMMUNICATED TO ANY OTHER PERSON WITHOUT WRITTEN PERMISSION FROM EAGLE COPTERS MAINTENANCE LTD.</small>			

-013 - NO DME INSTALLED



-013 - NO DME INSTALLED

TITLE:			WIRING DIAGRAM GARMIN GTS 855 TCAS BELL 212		
DWG:		E2006-11-11		REV:	D
				SHEET:	4 of 5
<small>COPYRIGHT © 2022 BY EAGLE COPTERS MAINTENANCE LTD THIS DOCUMENT IS PRIVATE AND CONFIDENTIAL AND IS SUPPLIED ON THE EXPRESS CONDITION THAT IT IS NOT TO BE USED FOR ANY PURPOSE OR COPIED OR COMMUNICATED TO ANY OTHER PERSON WITHOUT WRITTEN PERMISSION FROM EAGLE COPTERS MAINTENANCE LTD.</small>					



**GARMIN GTS 855 TCAS SYSTEM**

2006-P8003 (8)(9)(10)(19)

TCAS (2)  
5A 5A  
PWR REF: D212-725-2-G2  
LOC: LOWER OVHD CB PANEL, RH

2006-P8001 (5)(6)(7)

3 CONFIG MOD  
LOC: BACKSHELL

4 USB RECP  
LOC: BACKSHELL

2006-1P751

GARMIN GSU 75H  
ADAHRS PILOT  
ARINC 429 OUT ADAHRS 3A  
ARINC 429 OUT ADAHRS 3B  
LOC: UPPER NOSE SHELF

2006-P3252

GARMIN GTX 345R  
TRANSPONDER  
ETHERNET OUT 2A  
ETHERNET OUT 2B  
ETHERNET IN 2A  
ETHERNET IN 2B

2006-P3251

EXTERNAL SUPPRESSION  
LOC: LOWER NOSE SHELF

2006-20P1

EAGLE P178  
AUDIO MIXER  
INPUT 1 HI  
INPUT 1 LO  
INPUT 2 HI  
INPUT 2 LO  
LOC: LOWER NOSE SHELF

2006-5P2

EAGLE P139-HD  
AUDIO ROUTER  
TX 19 KEY  
LOC: LOWER NOSE SHELF

GARMIN GA 58  
TCAS ANTENNA (12)

J1 DIR ANT (YEL)  
J2 DIR ANT (BLK)  
J3 DIR ANT (BLU)  
J4 DIR ANT (RED)  
LOC: FWD BELLY PANEL

GARMIN GA 58  
TCAS ANTENNA (12)

J1 DIR ANT (YEL)  
J2 DIR ANT (BLK)  
J3 DIR ANT (BLU)  
J4 DIR ANT (RED)  
LOC: ROOF

LOC: LOWER NOSE SHELF

**-015 - NO DME INSTALLED**

TITLE:		<b>WIRING DIAGRAM GARMIN GTS 855 TCAS BELL 212</b>	
DWG:	<b>E2006-11-11</b>	REV:	<b>D</b>
SHEET:		<b>5 of 5</b>	
<small>COPYRIGHT © 2022 BY EAGLE COPTERS MAINTENANCE LTD THIS DOCUMENT IS PRIVATE AND CONFIDENTIAL AND IS SUPPLIED ON THE EXPRESS CONDITION THAT IT IS NOT TO BE USED FOR ANY PURPOSE OR COPIED OR COMMUNICATED TO ANY OTHER PERSON WITHOUT WRITTEN PERMISSION FROM EAGLE COPTERS MAINTENANCE LTD.</small>			