

REV	DESCRIPTION	DATE
A	INITIAL RELEASE	09-09-2021
B	REVISED TO GSU 75H AND ITEM 13 P/N.	30-11-2021
C	CREATED -013 CONFIG WITHOUT DME AND WITH OAT PROBE DISCONNECT. UPDATED BOM.	16-12-2022
D	INCORPORATED ECN-212-005 REV A. ADDED -015 CONFIGURATION.	12-02-2024
E	UPDATED PIN LABELS FOR GMU 44B, AND REPLACED ETHERNET CABLE WITH P/N: E40424 FOR -013 CONFIGURATION. ADDED GDU 1060 ALTERNATE PN. CONNECTED LIGHTING BUS HI WIRE FOR PILOT AND CO-PILOT GDU 1060 TO 27TB1 FOR -015 CONFIGURATION.	19-08-2024
F	INCORPORATED ECN-212-036 REV A. UPDATED WIRE CODES IN -011 CONFIG AND -013 CONFIG	22-08-2025

CONTINUED ON SHEET 2

	QTY	QTY	QTY	ITEM	PART NUMBER	DESCRIPTION	REMARKS
16	2	2	2	24	011-00978-00	OAT PROBE, KIT	GARMIN
16	--	--	2	23	M39029/63-368	CONTACT, PIN	GARMIN
16	--	--	2	22	330-90005-01	BACKSHELL	GARMIN
	--	--	2	21	330-00360-00	CONNECTOR, PLUG	GARMIN
	1	1	1	20	MS3474W12-10SW	CONNECTOR, JACK	
	--	--	2	19	011-00870-10	GMU 44 MAGNETOMETER	GARMIN
15	2	2	2	18	011-00979-20	CONFIGURATION MODULE	GARMIN
15	2	2	2	17	011-01855-04	BACKSHELL	GARMIN
15	2	2	2	16	330-00776-78	CONNECTOR, PLUG	GARMIN
	AR	AR	AR	15	M39029/58-360	CONTACT, PIN	
	2	2	2	14	MS22073-3	CIRCUIT BREAKER, 3A	
	2	2	2	13	011-03094-20 ALT 011-03094-21	GSU 75H	GARMIN
14	2	2	2	12	011-04038-00	CONFIGURATION MODULE	GARMIN
13	2	2	2	11	011-01855-04	BACKSHELL	GARMIN
13	2	2	2	10	011-01855-03	BACKSHELL	GARMIN
13	2	2	2	9	011-01855-02	BACKSHELL	GARMIN
13	2	2	2	8	011-01855-01	BACKSHELL	GARMIN
13	AR	AR	AR	7	336-00021-00	CONTACT, PIN	GARMIN
13	2	2	2	6	330-00366-78	CONNECTOR, PLUG	GARMIN
13	2	2	2	5	330-00366-62	CONNECTOR, PLUG	GARMIN
13	2	2	2	4	330-00366-44	CONNECTOR, PLUG	GARMIN
13	2	2	2	3	330-00366-26	CONNECTOR, PLUG	GARMIN
	2	2	2	2	MS22073-5	CIRCUIT BREAKER, 5A	
	2	2	2	1	011-03308-20 ALT: 011-03308-22	GDU 1060	GARMIN
					-015	CONFIGURATION	
					-013	CONFIGURATION	
					-011	CONFIGURATION	

NOTES:

- PERFORM ALL WORK IN ACCORDANCE WITH BELL HELICOPTER STANDARD PRACTICES MANUAL BHT-ELEC-SPM.
- ALL NEW UNSHIELDED WIRE USE M22759/41-(XX)-9 OR EQUIVALENT TYPE WIRE. (M22759/41-(XX)-9 IS NOT INTENDED TO BE USED IN SOLDER APPLICATIONS, SOLDERABILITY CAN BE ACHIEVED WITH THE PROPER SOLDER. USE CRIMP SPLICES FOR REPAIR). ALL WIRES 22 AWG UNLESS OTHERWISE SPECIFIED BY WIRE CODE. ALL JUMPERS TO BE LESS THAN 6 INCHES.
- ALL NEW SHIELDED WIRE USE M27500-(XX)SM(X)N23 OR EQUIVALENT TYPE WIRE. (M27500-(XX)SM(X)N23 IS NOT INTENDED TO BE USED IN SOLDER APPLICATIONS, SOLDERABILITY CAN BE ACHIEVED WITH THE PROPER SOLDER. USE CRIMP SPLICES FOR REPAIR). SOLDER SLEEVES SHALL USE SN96 SOLDER, USE P/N S200-X-00 OR EQUIVALENT.
- ALL SHIELD TERMINATIONS SHALL BE INSTALLED PER MIL-S-83519 OR EQUIVALENT. SHIELD TERMINATIONS SHOWN AS "DAISY-CHAINED" ARE FOR DRAWING CLARITY ONLY. INDIVIDUAL SHIELD EXTENSIONS SHALL BE SPLICED AT A COMMON TIE POINT TO THE TERMINATING WIRES. THE BACK SHELL OR AIRFRAME GROUND MAY BE USED.
- ALL AIRFRAME GROUNDS SHALL BE VIA AMP LUG OR GROUNDING BLOCK AND PROVIDE SEPARATE GROUND STUD LOCATIONS FOR DC POWER GROUNDS, AC POWER GROUNDS, CHASSIS GROUNDS, SIGNAL GROUNDS AND SHIELD GROUNDS.
- ALL EQUIPMENT BONDING TO ADJACENT AIRFRAME STRUCTURE TO BE 0.0025 OHM OR LESS. ALL ELECTRICAL GROUNDING AND BONDING TO BE INSTALLED IN ACCORDANCE WITH THE LATEST REVISION OF BHT-ELEC-SPM CHAPTER 8.
- ALL TERMINALS TO BE INSTALLED IN ACCORDANCE WITH THE LATEST REVISION OF BHT-ELEC-SPM CHAPTER 4 PARAGRAPH 4-9.
- ALL CONNECTORS TO BE INSTALLED IN ACCORDANCE WITH THE LATEST REVISION OF BHT-ELEC-SPM CHAPTER 5 AND / OR CIRCULAR CONNECTOR INSTALLATION INSTRUCTIONS (GARMIN DOCUMENT 190-00313-12). ENSURE ALL UNUSED CONNECTOR CONTACTS ARE FILLED WITH SPARE PINS/sockets OR PLASTIC GROMMET SEALING PLUGS. ENSURE ALL BULKHEAD MOUNTED CONNECTORS ARE PROPERLY BONDED TO AIRFRAME.
- ENSURE ALL SWITCHES, CIRCUIT BREAKERS, AND REMOTE MOUNTED BOXES ARE LABELED WITH A CONSISTENT SIZE, FONT, COLOR, BACKGROUND AND ARE ILLUMINATED CONSISTENT AS EXISTING LABELS.
- ROUTE ALL WIRES AND CABLES WITH EXISTING WIRE ROUTES WHERE POSSIBLE AND CLAMP IN ACCORDANCE WITH THE LATEST REVISION OF BHT-ELEC-SPM CHAPTER 6. WIRES MUST BE ROUTED WITH A MINIMUM OF 7 INCHES OF SEPARATION FROM OXYGEN AND FLUID LINES (MIN 2 INCHES IF WIRES IN CONDUIT).
- INSTALL SYSTEM IN ACCORDANCE WITH THE LATEST REVISION OF THE MANUFACTURERS INSTALLATION MANUAL.
- LOWERCASE LETTER CONNECTOR PIN DESIGNATORS ARE SHOWN AS UNDERLINED UPPERCASE LETTERS.
- 13 INCLUDED IN KIT PN: 011-03527-00.
- 14 INCLUDED IN KIT PN: 011-04038-00.
- 15 INCLUDED IN KIT PN: 011-03109-00.
- 16 INCLUDED IN KIT PN: 011-00871-00.
- 17 POWER WIRES NOT TO EXCEED 20 FT.
- 18 POWER WIRES NOT TO EXCEED 30 FT.
- 19 INCLUDED IN KIT PN 011-04201-00.
- 20 INSTALL METRIC PFD ENABLEMENT AS REQUIRED TO SUIT THE AIRCRAFT'S OPERATING REGION.

PREPARED	gs
REVIEWED	ds
RELEASED	
SCALE:	NTS



TITLE:		WIRING DIAGRAM GARMIN G500 TXI B212		DWG: E2006-11-1	
REV:		F		SHEET: 1 OF 13	

THIS DRAWING IS UNCONTROLLED UNLESS OPENED DIRECTLY FROM ECML'S CONTROLLED REPOSITORY

8

7

6

5

4

3

2

1

D

D

C

C

B

B

A

A

4	--	--	48	M85049/31-12W	BACKSHELL		
--	AR	--	47	E40424	CABLE, ETHERNET	PIC	
19	2	2	--	46	011-04205-00	CONNECTOR KIT	GARMIN
2	2	--	45	011-04201-00	GMU 44B MAGNETOMETER		GARMIN
8	8	--	44	60617-1	SOCKETS 24/18 BRASS/TIN		EDMO
2	2	--	43	1-480424-0	MATE'N'LOCK 4 SOCKET CONNECTOR		EDMO
8	8	--	42	60618-1	PINS 24/18 BRASS/TIN		EDMO
2	2	--	41	1-480426-0	MATE'N'LOCK 4 PIN CONNECTOR		EDMO
1	1	1	40	010-01476-47	HSVT ENABLEMENT SD CARD		GARMIN
20	1	1	1	39	010-03716-4J	METRIC PFD ENABLEMENT SD CARD	GARMIN
1	1	1	38	010-01477-4A	RAD ALT ENABLEMENT SD CARD		GARMIN
1	1	1	37	010-03716-33	HELICOPTER ENABLEMENT SD CARD		GARMIN
1	1	1	36	010-00769-60	INSTALLER ENABLEMENT SD CARD		GARMIN
1	1	1	35	MS3476W12-10PW	CONNECTOR, PLUG		
AR (20)	AR (20)	AR (20)	34	M39029/5-115	CONTACT, SOCKET		
1	1	1	33	MS3474W12-10S	CONNECTOR, JACK		
AR (20)	AR (20)	AR (20)	32	M39029/4-110	CONTACT, PIN		
1	1	1	31	MS3476W12-10P	CONNECTOR, PLUG		
1	1	1	30	M39029/32-247	CONTACT, SOCKET		
1	1	1	29	M39029/31-228	CONTACT, PIN		
1	1	1	28	M39029/32-259	CONTACT, SOCKET		
1	1	1	27	M39029/31-240	CONTACT, PIN		
AR	--	AR	26	392404	CABLE, ETHERNET		CARLISLE
2	2	2	25	010-03716-20	DATABASE SD CARD TXI, HELO		GARMIN
-015 QTY	-013 QTY	-011 QTY	ITEM	PART NUMBER	DESCRIPTION		REMARKS

BILL OF MATERIALS

TITLE: **WIRING DIAGRAM
GARMIN G500 TXI
B212**

DWG: E2006-11-1	REV: F	SHEET: 2 OF 13
------------------------	---------------	-----------------------

COPYRIGHT © 2022 BY EAGLE COPTERS MAINTENANCE LTD
THIS DOCUMENT IS PRIVATE AND CONFIDENTIAL AND IS SUPPLIED ON THE EXPRESS CONDITION THAT IT IS NOT TO BE USED FOR ANY PURPOSE OR COPIED OR COMMUNICATED TO ANY OTHER PERSON WITHOUT WRITTEN PERMISSION FROM EAGLE COPTERS MAINTENANCE LTD.

8

7

6

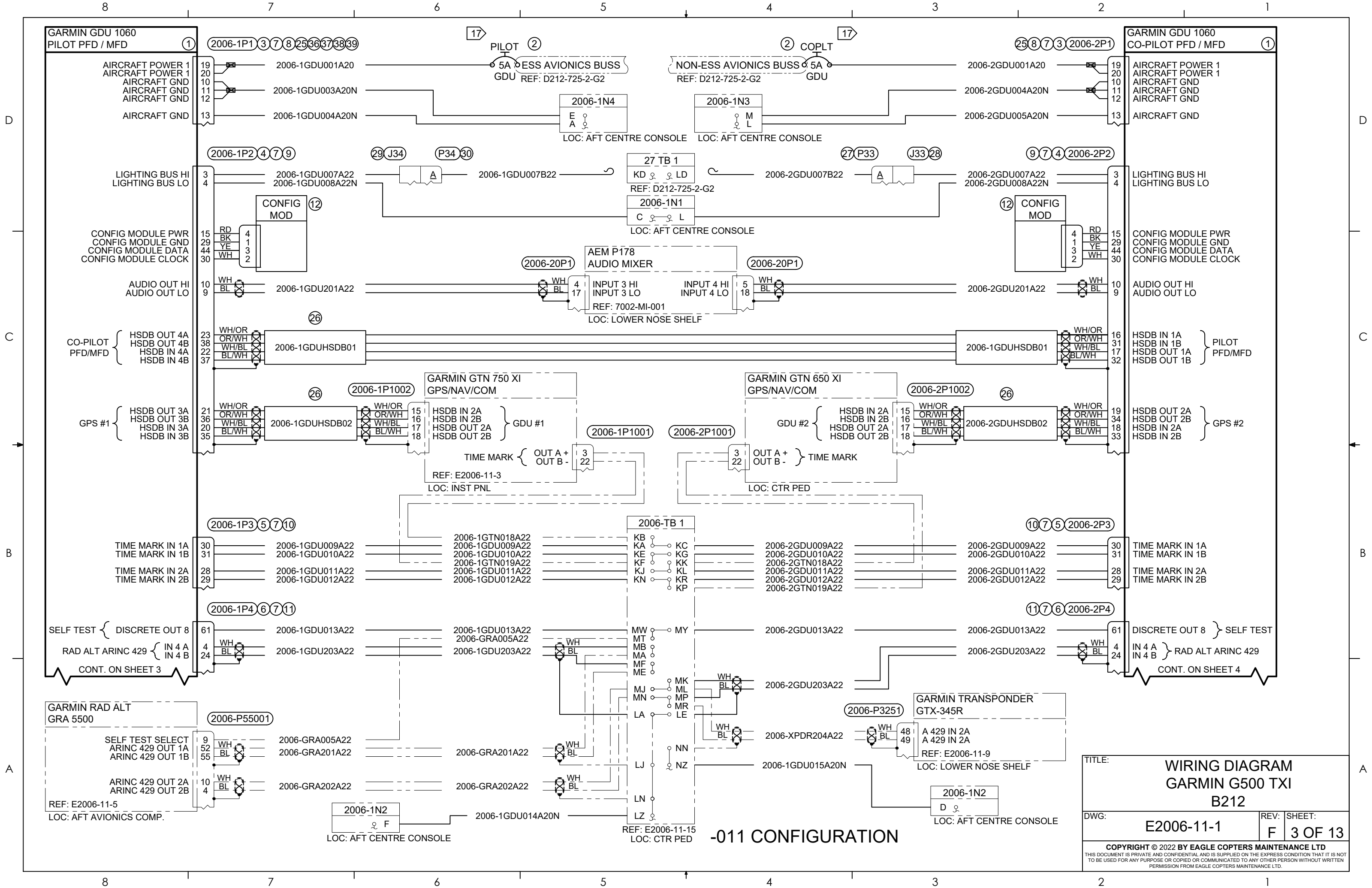
5

4

3

2

1



TITLE:		WIRING DIAGRAM GARMIN G500 TXI B212	
DWG:	E2006-11-1	REV:	F
SHEET:	3 OF 13		
<small>COPYRIGHT © 2022 BY EAGLE COPTERS MAINTENANCE LTD THIS DOCUMENT IS PRIVATE AND CONFIDENTIAL AND IS SUPPLIED ON THE EXPRESS CONDITION THAT IT IS NOT TO BE USED FOR ANY PURPOSE OR COPIED OR COMMUNICATED TO ANY OTHER PERSON WITHOUT WRITTEN PERMISSION FROM EAGLE COPTERS MAINTENANCE LTD.</small>			

-011 CONFIGURATION

**GARMIN GDU 1060
PILOT PFD / MFD** ①

2006-1P1 ③ ⑦ ⑧ ⑨ ⑩ ⑪ ⑫ ⑬ ⑭ ⑮ ⑯ ⑰ ⑱ ⑲ ⑳ ㉑ ㉒ ㉓ ㉔ ㉕ ㉖ ㉗ ㉘ ㉙ ㉚ ㉛ ㉜ ㉝ ㉞ ㉟ ㊱ ㊲ ㊳ ㊴ ㊵ ㊶ ㊷ ㊸ ㊹ ㊺ ㊻ ㊼ ㊽ ㊾ ㊿

AIRCRAFT POWER 1
AIRCRAFT POWER 1
AIRCRAFT GND
AIRCRAFT GND
AIRCRAFT GND
AIRCRAFT GND

LIGHTING BUS HI
LIGHTING BUS LO

CONFIG MODULE PWR
CONFIG MODULE GND
CONFIG MODULE DATA
CONFIG MODULE CLOCK

AUDIO OUT HI
AUDIO OUT LO

CO-PILOT PFD/MFD {
HSDB OUT 4A
HSDB OUT 4B
HSDB IN 4A
HSDB IN 4B

GPS #1 {
HSDB OUT 3A
HSDB OUT 3B
HSDB IN 3A
HSDB IN 3B

TIME MARK IN 1A
TIME MARK IN 1B
TIME MARK IN 2A
TIME MARK IN 2B

SELF TEST { DISCRETE OUT 8
RAD ALT ARINC 429 { IN 4 A
IN 4 B
CONT. ON SHEET 3

GARMIN RAD ALT
GRA 5500

SELF TEST SELECT
ARINC 429 OUT 1A
ARINC 429 OUT 1B

ARINC 429 OUT 2A
ARINC 429 OUT 2B

REF: E2006-11-5
LOC: AFT AVIONICS COMP.

2006-1GDU001A20
2006-1GDU003A20N
2006-1GDU004A20N

2006-1GDU007A22
2006-1GDU008A22N

2006-1GDU201A22

2006-1GDUHSDB01

2006-1GDUHSDB02

2006-1GDU009A22
2006-1GDU010A22
2006-1GDU011A22
2006-1GDU012A22

2006-1GDU013A22
2006-1GDU203A22

2006-1GDU014A20N

PILOT ②

5A ① ② ③ ④ ⑤ ⑥ ⑦ ⑧ ⑨ ⑩ ⑪ ⑫ ⑬ ⑭ ⑮ ⑯ ⑰ ⑱ ⑲ ⑳ ㉑ ㉒ ㉓ ㉔ ㉕ ㉖ ㉗ ㉘ ㉙ ㉚ ㉛ ㉜ ㉝ ㉞ ㉟ ㊱ ㊲ ㊳ ㊴ ㊵ ㊶ ㊷ ㊸ ㊹ ㊺ ㊻ ㊼ ㊽ ㊾ ㊿

ESS AVIONICS BUSS
GDU REF: D212-725-2-G2

NON-ESS AVIONICS BUSS
REF: D212-725-2-G2

2006-1N4
E
A

2006-1N3
M
L

27 TB 1
KD ♂ ♀ LD
REF: D212-725-2-G2

2006-1N1
C ♀ ♀ L
LOC: AFT CENTRE CONSOLE

AEM P178
AUDIO MIXER
REF: 7002-MI-001
LOC: LOWER NOSE SHELF

GARMIN GTN 750 XI
GPS/NAV/COM

GARMIN GTN 650 XI
GPS/NAV/COM

2006-1P1002

2006-1P1001

2006-1P1000

2006-1P3 ⑤ ⑦ ⑩

2006-1P4 ⑥ ⑦ ⑪

2006-P55001

2006-1N2
D ♀
LOC: AFT CENTRE CONSOLE

REF: E2006-11-15
LOC: CTR PED

COPLT ②

2006-2GDU001A20
2006-2GDU004A20N
2006-2GDU005A20N

2006-2GDU007B22

2006-2GDU201A22

2006-2GDUHSDB01

2006-2GDUHSDB02

2006-2GDU009A22
2006-2GDU010A22
2006-2GDU011A22
2006-2GDU012A22
2006-2GDU013A22
2006-2GDU203A22

2006-2GDU014A20N

2006-1N2
D ♀
LOC: AFT CENTRE CONSOLE

**GARMIN GDU 1060
CO-PILOT PFD / MFD** ①

2006-2P1 ②⑤ ⑧ ⑦ ③

AIRCRAFT POWER 1
AIRCRAFT POWER 1
AIRCRAFT GND
AIRCRAFT GND
AIRCRAFT GND

LIGHTING BUS HI
LIGHTING BUS LO

CONFIG MODULE PWR
CONFIG MODULE GND
CONFIG MODULE DATA
CONFIG MODULE CLOCK

AUDIO OUT HI
AUDIO OUT LO

PILOT PFD/MFD {
HSDB IN 1A
HSDB IN 1B
HSDB OUT 1A
HSDB OUT 1B

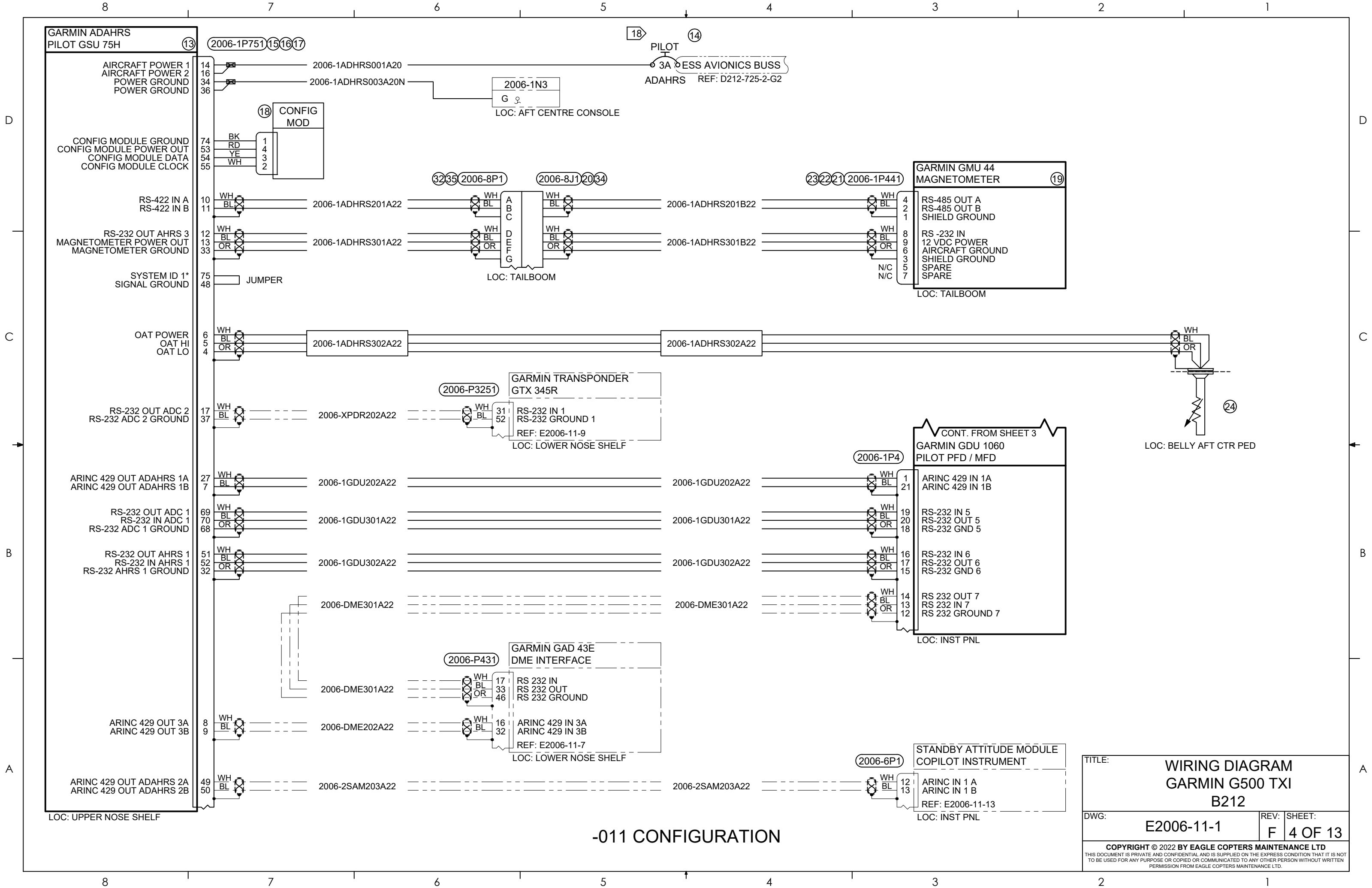
GPS #2 {
HSDB OUT 2A
HSDB OUT 2B
HSDB IN 2A
HSDB IN 2B

TIME MARK IN 1A
TIME MARK IN 1B
TIME MARK IN 2A
TIME MARK IN 2B

DISCRETE OUT 8 } SELF TEST
IN 4 A }
IN 4 B }
CONT. ON SHEET 4

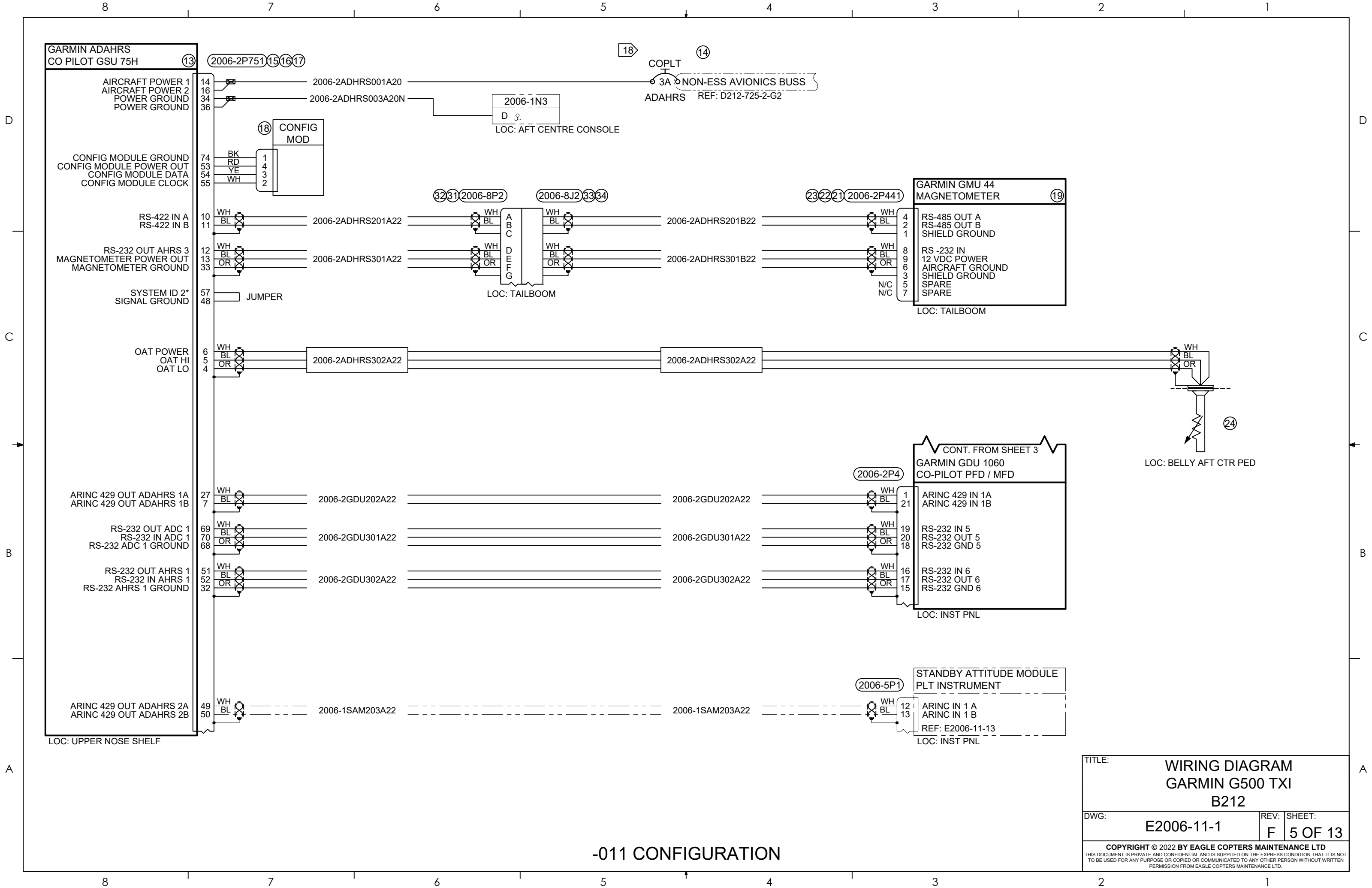
GARMIN TRANSPONDER
GTX-345R
REF: E2006-11-9
LOC: LOWER NOSE SHELF

2006-1N2
D ♀
LOC: AFT CENTRE CONSOLE



-011 CONFIGURATION

TITLE:		WIRING DIAGRAM GARMIN G500 TXI B212	
DWG:	E2006-11-1	REV:	F
SHEET:		4 OF 13	
<small>COPYRIGHT © 2022 BY EAGLE COPTERS MAINTENANCE LTD THIS DOCUMENT IS PRIVATE AND CONFIDENTIAL AND IS SUPPLIED ON THE EXPRESS CONDITION THAT IT IS NOT TO BE USED FOR ANY PURPOSE OR COPIED OR COMMUNICATED TO ANY OTHER PERSON WITHOUT WRITTEN PERMISSION FROM EAGLE COPTERS MAINTENANCE LTD.</small>			



GARMIN ADAHRS
CO PILOT GSU 75H (13)

AIRCRAFT POWER 1
AIRCRAFT POWER 2
POWER GROUND
POWER GROUND

CONFIG MODULE GROUND
CONFIG MODULE POWER OUT
CONFIG MODULE DATA
CONFIG MODULE CLOCK

RS-422 IN A
RS-422 IN B

RS-232 OUT AHRS 3
MAGNETOMETER POWER OUT
MAGNETOMETER GROUND

SYSTEM ID 2*
SIGNAL GROUND

OAT POWER
OAT HI
OAT LO

ARINC 429 OUT ADAHRS 1A
ARINC 429 OUT ADAHRS 1B

RS-232 OUT ADC 1
RS-232 IN ADC 1
RS-232 ADC 1 GROUND

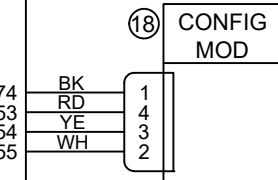
RS-232 OUT AHRS 1
RS-232 IN AHRS 1
RS-232 AHRS 1 GROUND

ARINC 429 OUT ADAHRS 2A
ARINC 429 OUT ADAHRS 2B

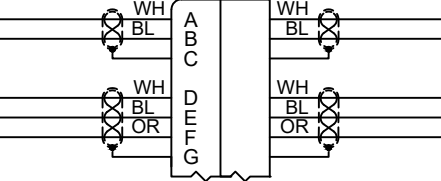
LOC: UPPER NOSE SHELF

2006-2P751 (15)(16)(17)

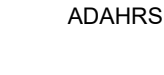
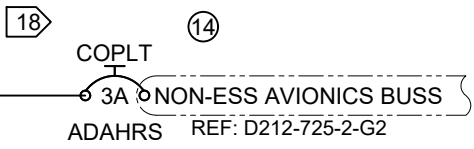
2006-2ADHRS001A20
2006-2ADHRS003A20N



(32)(31) 2006-8P2 (2006-8J2) (33)(34)

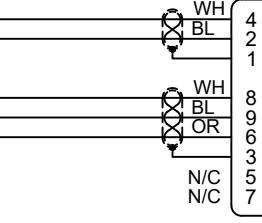


LOC: TAILBOOM



LOC: AFT CENTRE CONSOLE

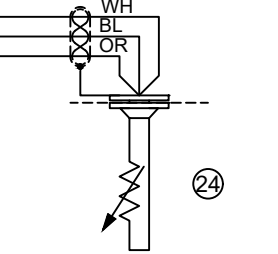
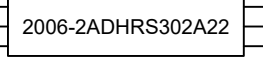
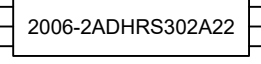
(23)(22)(21) 2006-2P441



GARMIN GMU 44
MAGNETOMETER (19)

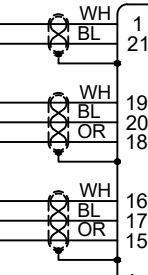
RS-485 OUT A
RS-485 OUT B
SHIELD GROUND
RS-232 IN
12 VDC POWER
AIRCRAFT GROUND
SHIELD GROUND
SPARE
SPARE

LOC: TAILBOOM



LOC: BELLY AFT CTR PED

(2006-2P4)

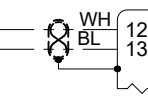


CONT. FROM SHEET 3
GARMIN GDU 1060
CO-PILOT PFD / MFD

ARINC 429 IN 1A
ARINC 429 IN 1B
RS-232 IN 5
RS-232 OUT 5
RS-232 GND 5
RS-232 IN 6
RS-232 OUT 6
RS-232 GND 6

LOC: INST PNL

(2006-5P1)



STANDBY ATTITUDE MODULE
PLT INSTRUMENT

ARINC IN 1 A
ARINC IN 1 B
REF: E2006-11-13

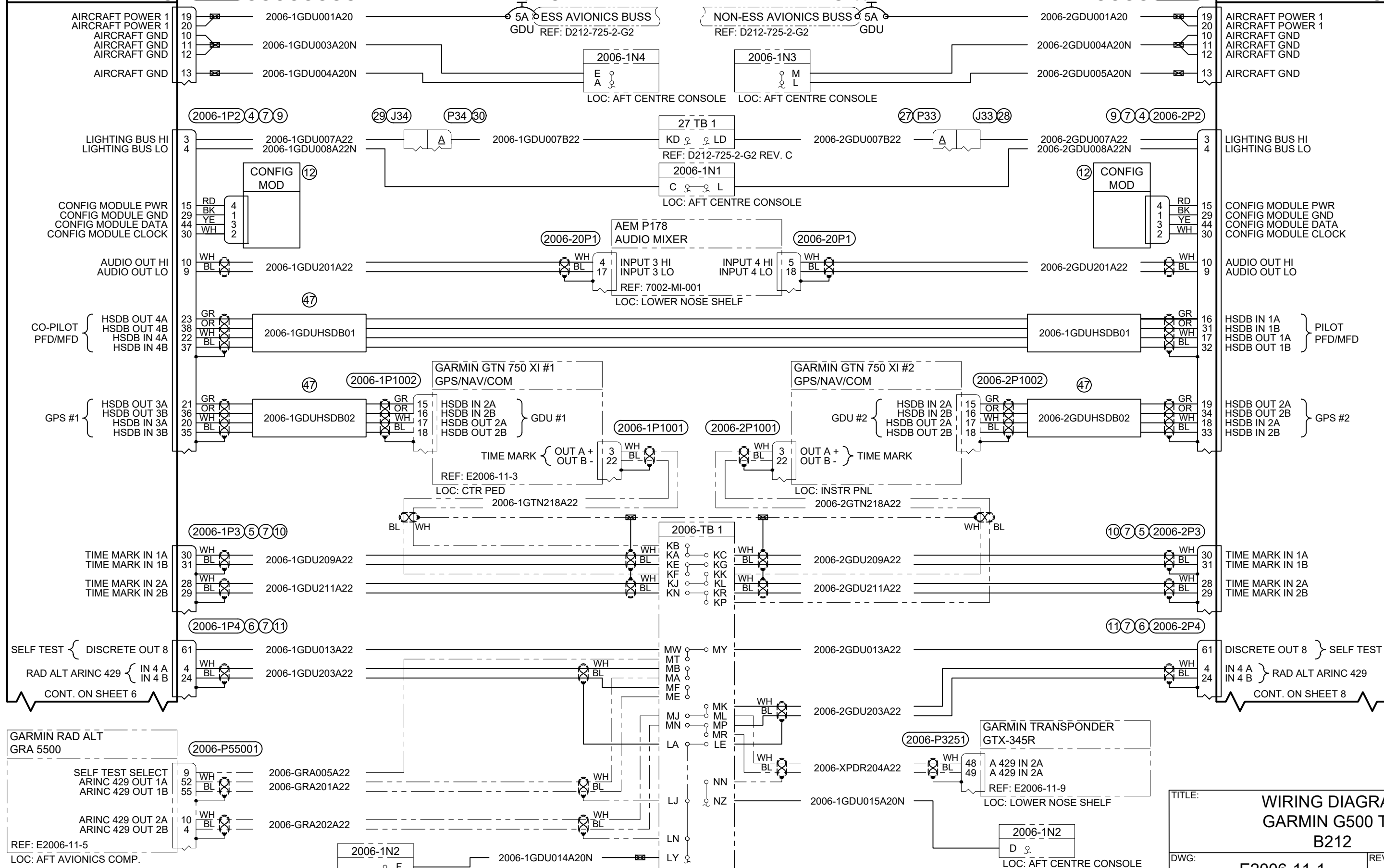
LOC: INST PNL

TITLE:		WIRING DIAGRAM GARMIN G500 TXI B212	
DWG:	E2006-11-1	REV:	F
SHEET:	5 OF 13		
<small>COPYRIGHT © 2022 BY EAGLE COPTERS MAINTENANCE LTD THIS DOCUMENT IS PRIVATE AND CONFIDENTIAL AND IS SUPPLIED ON THE EXPRESS CONDITION THAT IT IS NOT TO BE USED FOR ANY PURPOSE OR COPIED OR COMMUNICATED TO ANY OTHER PERSON WITHOUT WRITTEN PERMISSION FROM EAGLE COPTERS MAINTENANCE LTD.</small>			

-011 CONFIGURATION

GARMIN GDU 1060
PILOT PFD / MFD

GARMIN GDU 1060
CO-PILOT PFD / MFD

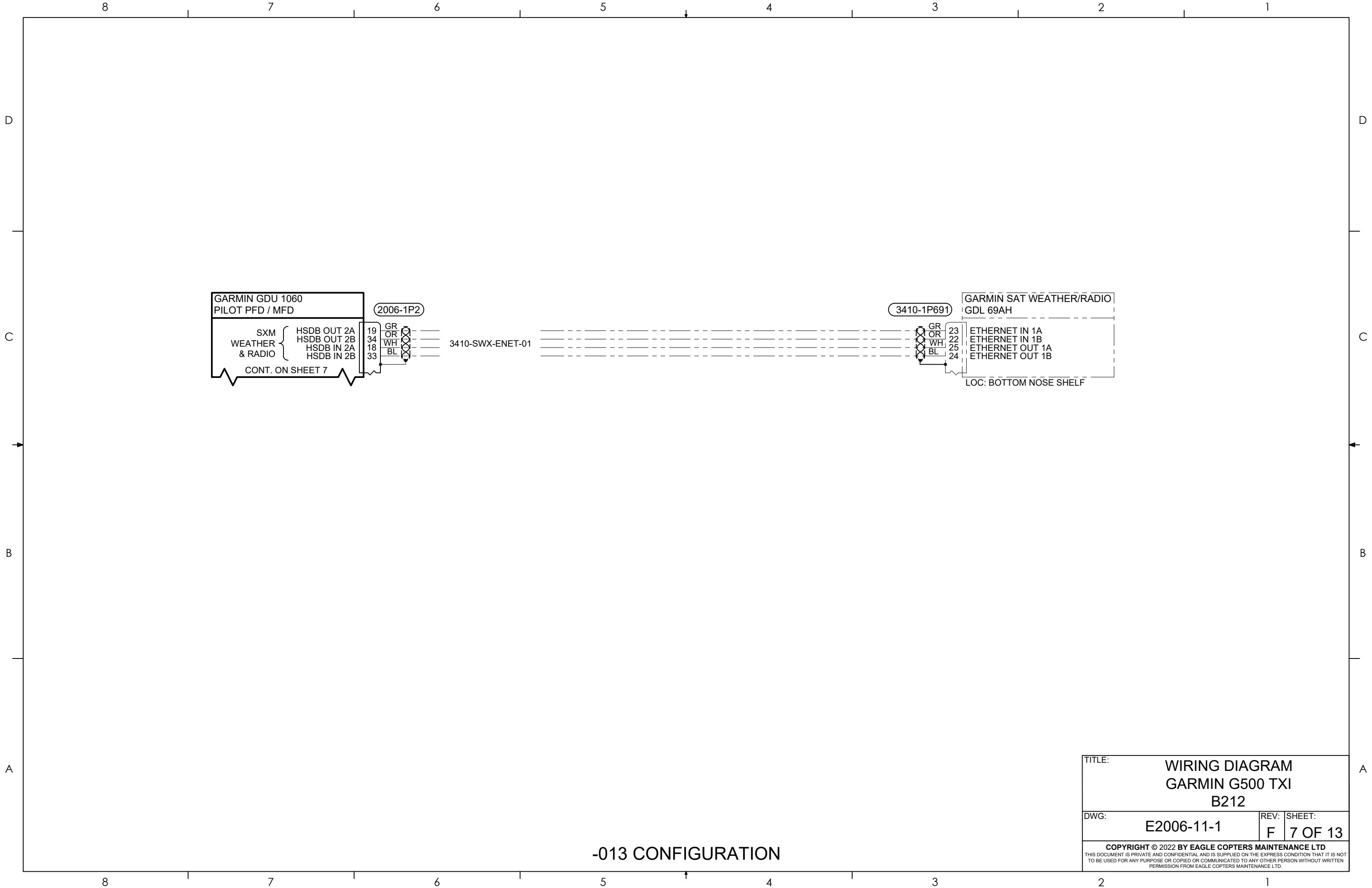


-013 CONFIGURATION

TITLE: **WIRING DIAGRAM
GARMIN G500 TXI
B212**

DWG: **E2006-11-1** REV: **F** SHEET: **6 OF 13**

COPYRIGHT © 2022 BY EAGLE COPTERS MAINTENANCE LTD
THIS DOCUMENT IS PRIVATE AND CONFIDENTIAL AND IS SUPPLIED ON THE EXPRESS CONDITION THAT IT IS NOT
TO BE USED FOR ANY PURPOSE OR COPIED OR COMMUNICATED TO ANY OTHER PERSON WITHOUT WRITTEN
PERMISSION FROM EAGLE COPTERS MAINTENANCE LTD.



-013 CONFIGURATION

TITLE:			WIRING DIAGRAM GARMIN G500 TXI B212		
DWG:		E2006-11-1		REV:	F
				SHEET:	7 OF 13
<small>COPYRIGHT © 2022 BY EAGLE COPTERS MAINTENANCE LTD THIS DOCUMENT IS PRIVATE AND CONFIDENTIAL AND IS SUPPLIED ON THE EXPRESS CONDITION THAT IT IS NOT TO BE USED FOR ANY PURPOSE OR COPIED OR COMMUNICATED TO ANY OTHER PERSON WITHOUT WRITTEN PERMISSION FROM EAGLE COPTERS MAINTENANCE LTD.</small>					

GARMIN ADAHRS PILOT GSU 75H (13)

AIRCRAFT POWER 1
AIRCRAFT POWER 2
POWER GROUND
POWER GROUND

CONFIG MODULE GROUND
CONFIG MODULE POWER OUT
CONFIG MODULE DATA
CONFIG MODULE CLOCK

RS-422 IN A
RS-422 IN B

RS-232 OUT AHRS 3
MAGNETOMETER POWER OUT
MAGNETOMETER GROUND

SYSTEM ID 1*
SIGNAL GROUND

OAT POWER
OAT HI
OAT LO

RS-232 OUT ADC 2
RS-232 ADC 2 GROUND

ARINC 429 OUT ADAHRS 1A
ARINC 429 OUT ADAHRS 1B

RS-232 OUT ADC 1
RS-232 IN ADC 1
RS-232 ADC 1 GROUND

RS-232 OUT AHRS 1
RS-232 IN AHRS 1
RS-232 AHRS 1 GROUND

ARINC 429 OUT ADAHRS 2A
ARINC 429 OUT ADAHRS 2B

ARINC 429 OUT ADAHRS 3A
ARINC 429 OUT ADAHRS 3B

LOC: UPPER NOSE SHELF

(2006-1P751) (15) (16) (17)

(18) CONFIG MOD

74 BK 1
74 RD 4
53 YE 3
54 WH 2
55

10 WH
11 BL

12 WH
13 BL
33 OR

75 JUMPER
48

6 WH
5 BL
4 OR

17 WH
37 BL

27 WH
7 BL

69 WH
70 BL
68 OR

51 WH
52 BL
32 OR

49 WH
50 BL

8 WH
9 BL

2006-1ADHRS001A20

2006-1ADHRS003A20N

2006-1ADHRS201A22

2006-1ADHRS301A22

2006-1ADHRS302A22

2006-XPDR202A22

2006-1GDU202A22

2006-1GDU301A22

2006-1GDU302A22

2006-2SAM203A22

2006-GTS202A22

2006-1N3
G ♀
LOC: AFT CENTRE CONSOLE

(32) (35) (2006-8P1) (20) (34)
A B C
D E F G
LOC: TAILBOOM

(44) (43) (7540-1P2) (7540-1J2) (41) (42)
1 2 3 4
WH BL OR
LOC: UNDERFLOOR, AFT OF CTR PED

(2006-P3251)
31 WH
52 BL
LOC: LOWER NOSE SHELF

(18) PILOT (14)

3A 3A 3A
ESS AVIONICS BUSS
ADAHRS REF: D212-725-2-G2

2006-1ADHRS201B22

2006-1ADHRS301B22

2006-1ADHRS302B22

2006-1GDU202A22

2006-1GDU301A22

2006-1GDU302A22

2006-2SAM203A22

2006-GTS202A22

(46) (2006-1P441)

(45) GARMIN GMU 44B MAGNETOMETER

3 WH
2 BL
1
5 WH
6 BL
4 OR

LOC: TAILBOOM

(24)

LOC: BELLY AFT CTR PED

(2006-1P4)

1 WH
21 BL

19 WH
20 BL
18 OR

16 WH
17 BL
15 OR

LOC: INSTR PNL

(2006-6P1)

12 WH
13 BL

REF: E2006-11-13
LOC: INST PNL

(2006-P8001)

16 WH
17 BL

LOC: LOWER NOSE SHELF

GARMIN GDU 1060 PILOT PFD / MFD

ARINC 429 IN 1A
ARINC 429 IN 1B

RS-232 IN 5
RS-232 OUT 5
RS-232 GND 5

RS-232 IN 6
RS-232 OUT 6
RS-232 GND 6

LOC: INSTR PNL

STANDBY ATTITUDE MODULE COPILOT INSTRUMENT

ARINC IN 1 A
ARINC IN 1 B

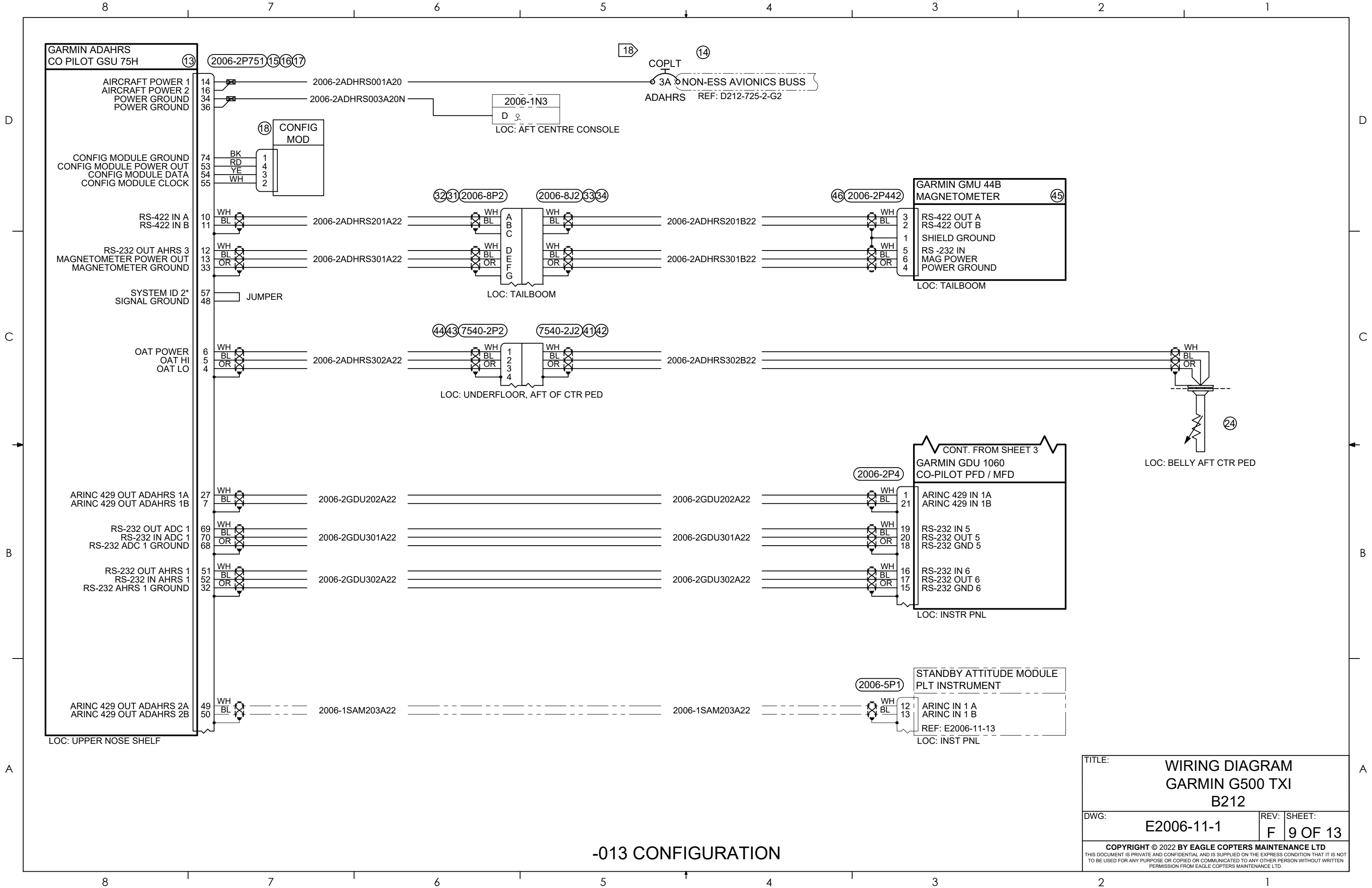
REF: E2006-11-13
LOC: INST PNL

GARMIN TCAS SYSTEM GTS 855

ARINC 429 IN 1A
ARINC 429 IN 1B

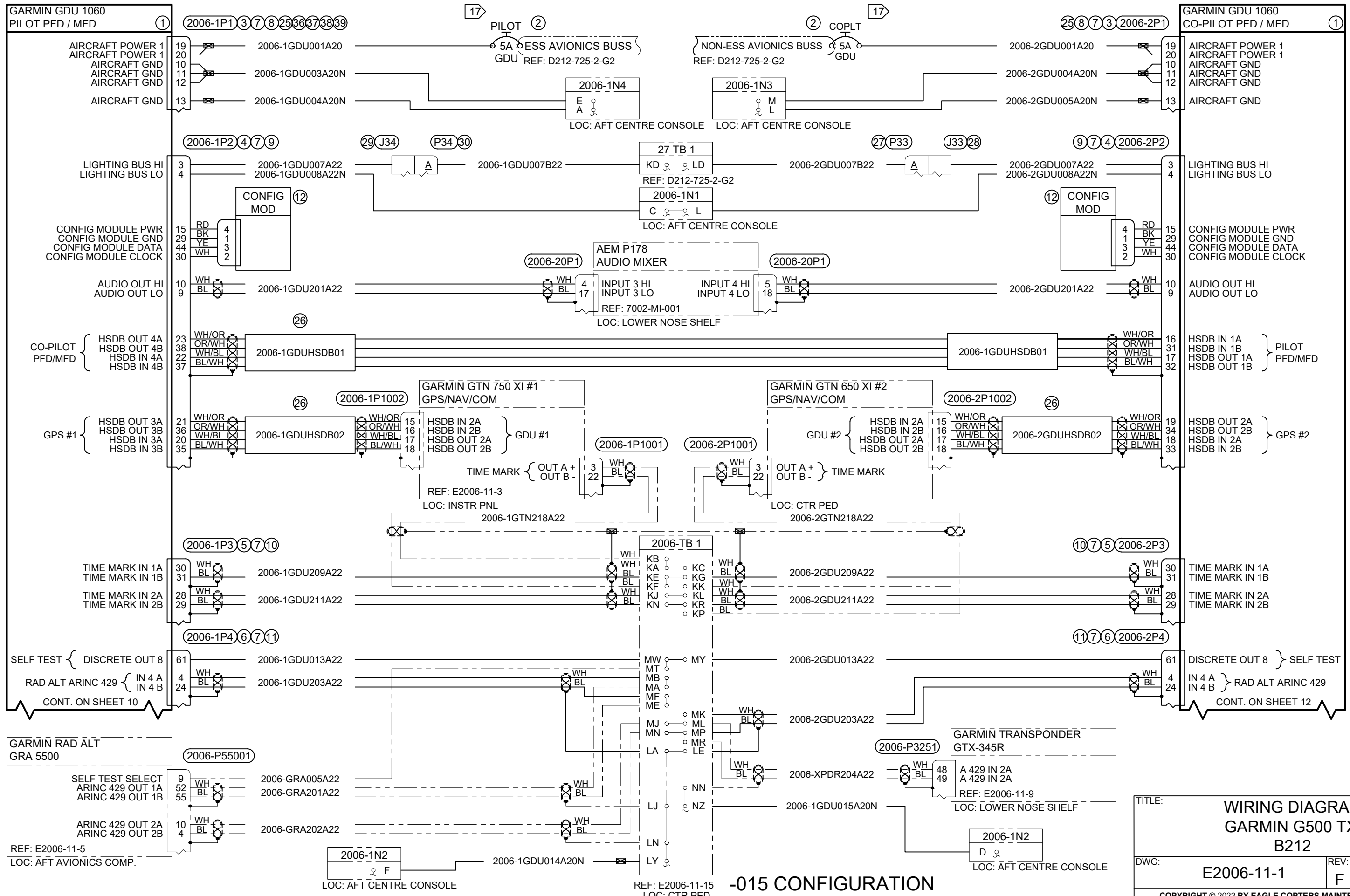
LOC: LOWER NOSE SHELF

TITLE:		WIRING DIAGRAM GARMIN G500 TXI B212	
DWG:	E2006-11-1	REV:	F
SHEET:	8 OF 13		
<small>COPYRIGHT © 2022 BY EAGLE COPTERS MAINTENANCE LTD THIS DOCUMENT IS PRIVATE AND CONFIDENTIAL AND IS SUPPLIED ON THE EXPRESS CONDITION THAT IT IS NOT TO BE USED FOR ANY PURPOSE OR COPIED OR COMMUNICATED TO ANY OTHER PERSON WITHOUT WRITTEN PERMISSION FROM EAGLE COPTERS MAINTENANCE LTD.</small>			



-013 CONFIGURATION

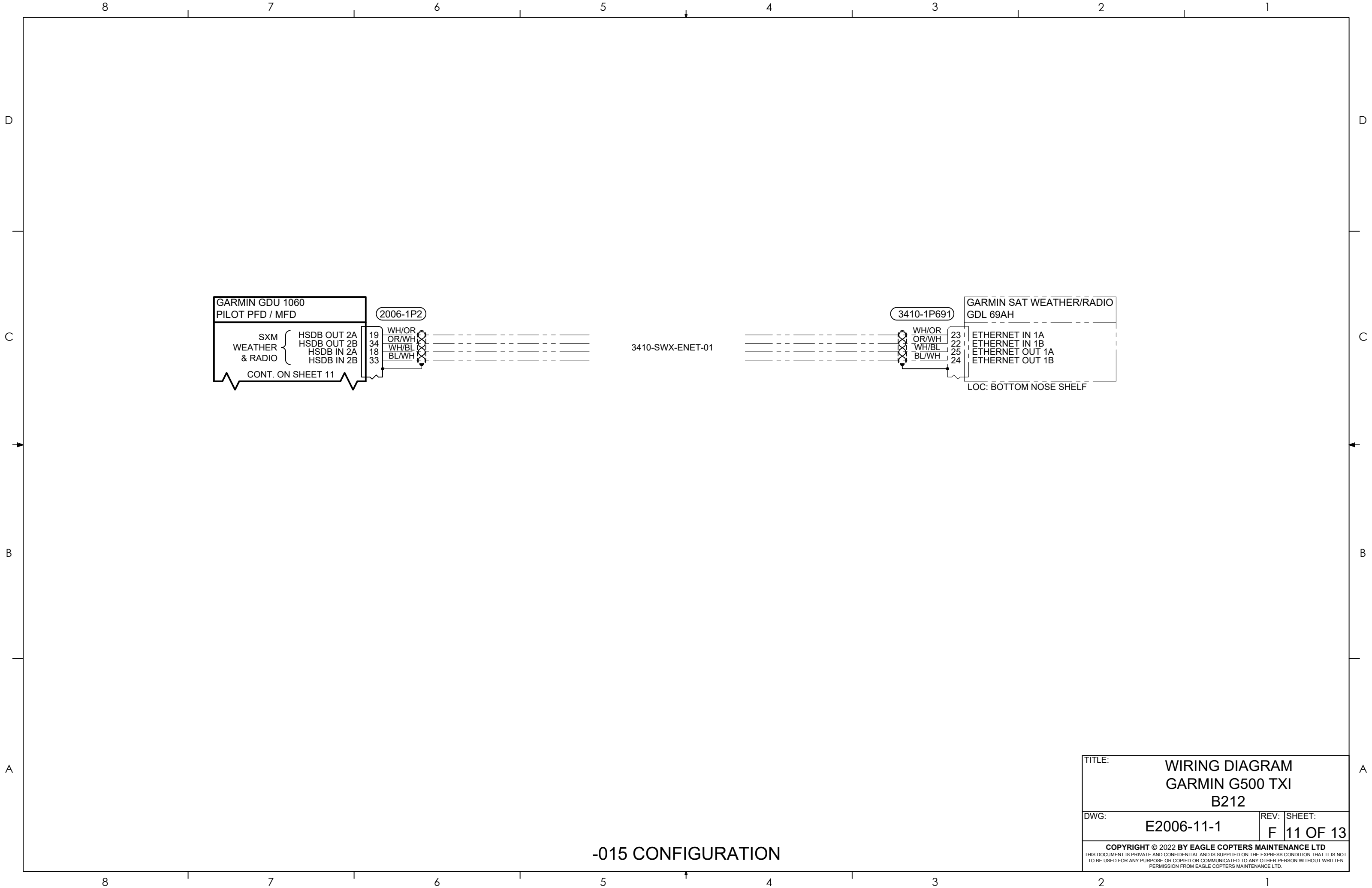
TITLE:		WIRING DIAGRAM GARMIN G500 TXI B212	
DWG:	E2006-11-1	REV:	F
		SHEET:	9 OF 13
<small>COPYRIGHT © 2022 BY EAGLE COPTERS MAINTENANCE LTD THIS DOCUMENT IS PRIVATE AND CONFIDENTIAL AND IS SUPPLIED ON THE EXPRESS CONDITION THAT IT IS NOT TO BE USED FOR ANY PURPOSE OR COPIED OR COMMUNICATED TO ANY OTHER PERSON WITHOUT WRITTEN PERMISSION FROM EAGLE COPTERS MAINTENANCE LTD.</small>			



-015 CONFIGURATION

TITLE:		WIRING DIAGRAM GARMIN G500 TXI B212	
DWG:	E2006-11-1	REV:	F
SHEET:		10 OF 13	

COPYRIGHT © 2022 BY EAGLE COPTERS MAINTENANCE LTD
THIS DOCUMENT IS PRIVATE AND CONFIDENTIAL AND IS SUPPLIED ON THE EXPRESS CONDITION THAT IT IS NOT TO BE USED FOR ANY PURPOSE OR COPIED OR COMMUNICATED TO ANY OTHER PERSON WITHOUT WRITTEN PERMISSION FROM EAGLE COPTERS MAINTENANCE LTD.



GARMIN GDU 1060
PILOT PFD / MFD

SXM
WEATHER
& RADIO

HSDB OUT 2A
HSDB OUT 2B
HSDB IN 2A
HSDB IN 2B

CONT. ON SHEET 11

(2006-1P2)

19 WH/OR
34 OR/WH
18 WH/BL
33 BL/WH

3410-SWX-ENET-01

(3410-1P691)

23 WH/OR
22 OR/WH
25 WH/BL
24 BL/WH

GARMIN SAT WEATHER/RADIO
GDL 69AH

ETHERNET IN 1A
ETHERNET IN 1B
ETHERNET OUT 1A
ETHERNET OUT 1B

LOC: BOTTOM NOSE SHELF

TITLE:			WIRING DIAGRAM GARMIN G500 TXI B212		
DWG:	E2006-11-1	REV:	F	SHEET:	11 OF 13
<small>COPYRIGHT © 2022 BY EAGLE COPTERS MAINTENANCE LTD THIS DOCUMENT IS PRIVATE AND CONFIDENTIAL AND IS SUPPLIED ON THE EXPRESS CONDITION THAT IT IS NOT TO BE USED FOR ANY PURPOSE OR COPIED OR COMMUNICATED TO ANY OTHER PERSON WITHOUT WRITTEN PERMISSION FROM EAGLE COPTERS MAINTENANCE LTD.</small>					

-015 CONFIGURATION

GARMIN ADAHRS PILOT GSU 75H (13)

AIRCRAFT POWER 1
AIRCRAFT POWER 2
POWER GROUND
POWER GROUND

CONFIG MODULE GROUND
CONFIG MODULE POWER OUT
CONFIG MODULE DATA
CONFIG MODULE CLOCK

RS-422 IN A
RS-422 IN B

RS-232 OUT AHRS 3
MAGNETOMETER POWER OUT
MAGNETOMETER GROUND

SYSTEM ID 1*
SIGNAL GROUND

OAT POWER
OAT HI
OAT LO

RS-232 OUT ADC 2
RS-232 ADC 2 GROUND

ARINC 429 OUT ADAHRS 1A
ARINC 429 OUT ADAHRS 1B

RS-232 OUT ADC 1
RS-232 IN ADC 1
RS-232 ADC 1 GROUND

RS-232 OUT AHRS 1
RS-232 IN AHRS 1
RS-232 AHRS 1 GROUND

ARINC 429 OUT ADAHRS 2A
ARINC 429 OUT ADAHRS 2B

ARINC 429 OUT ADAHRS 3A
ARINC 429 OUT ADAHRS 3B

LOC: UPPER NOSE SHELF

2006-1P751 (15)(16)(17)

2006-1ADHRS001A20

2006-1ADHRS003A20N

2006-1ADHRS201A22

2006-1ADHRS301A22

2006-1ADHRS302A22

2006-XPDR202A22

2006-1GDU202A22

2006-1GDU301A22

2006-1GDU302A22

2006-2SAM203A22

2006-GTS202A22

2006-1N3
G ♀
LOC: AFT CENTRE CONSOLE

2006-8P1 (32)(35)(48)
A B C
D E F G
LOC: TAILBOOM

2006-8J1 (20)(34)(48)

7540-1P2 (44)(43)
1 2 3 4
LOC: UNDERFLOOR, AFT OF CTR PED

7540-1J2 (41)(42)

PILOT (14)

3A
ESS AVIONICS BUSS
ADAHRS REF: D212-725-2-G2

2006-1P441 (46)

2006-1P4

2006-6P1 (2006-6P1)

2006-P8001 (2006-P8001)

GARMIN GMU 44B MAGNETOMETER (45)

RS-422 OUT A
RS-422 OUT B
SHIELD GROUND
RS-232 IN
MAG POWER IN
POWER GROUND

LOC: TAILBOOM

GARMIN TRANSPONDER GTX 345R

RS-232 IN 1
RS-232 GROUND 1
REF: E2006-11-9
LOC: LOWER NOSE SHELF

GARMIN GDU 1060 PILOT PFD / MFD

ARINC 429 IN 1A
ARINC 429 IN 1B
RS-232 IN 5
RS-232 OUT 5
RS-232 GND 5
RS-232 IN 6
RS-232 OUT 6
RS-232 GND 6

LOC: INSTR PNL

STANDBY ATTITUDE MODULE COPILOT INSTRUMENT

ARINC IN 1 A
ARINC IN 1 B
REF: E2006-11-13
LOC: INST PNL

GARMIN TCAS SYSTEM GTS 855

ARINC 429 IN 1A
ARINC 429 IN 1B

LOC: LOWER NOSE SHELF

(18) CONFIG MOD

1 BK
4 RD
3 YE
2 WH

(24)

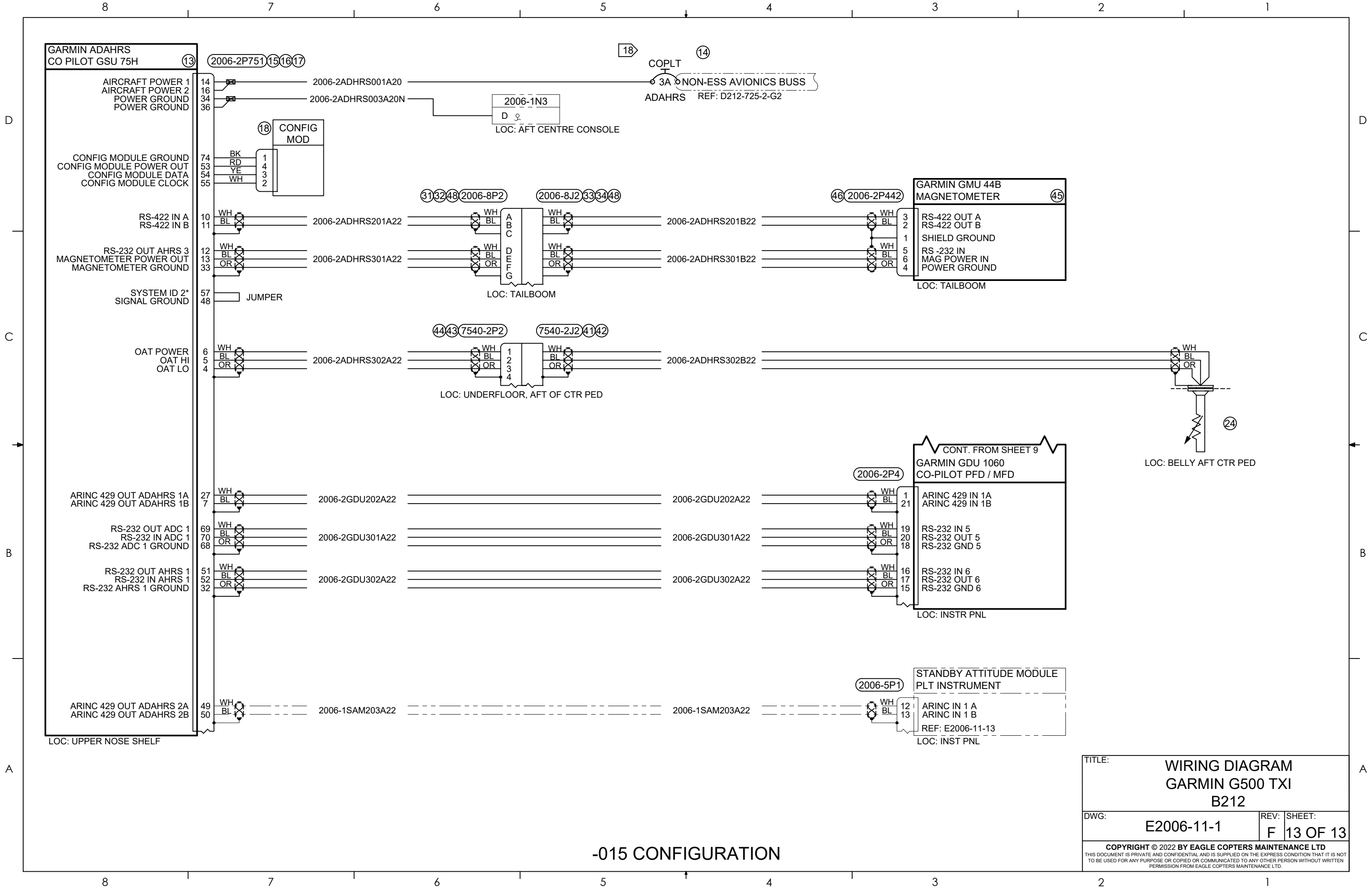
LOC: BELLY AFT CTR PED

-015 CONFIGURATION

TITLE: **WIRING DIAGRAM GARMIN G500 TXI B212**

DWG: **E2006-11-1** REV: **F** SHEET: **12 OF 13**

COPYRIGHT © 2022 BY EAGLE COPTERS MAINTENANCE LTD
THIS DOCUMENT IS PRIVATE AND CONFIDENTIAL AND IS SUPPLIED ON THE EXPRESS CONDITION THAT IT IS NOT TO BE USED FOR ANY PURPOSE OR COPIED OR COMMUNICATED TO ANY OTHER PERSON WITHOUT WRITTEN PERMISSION FROM EAGLE COPTERS MAINTENANCE LTD.



-015 CONFIGURATION

TITLE:		WIRING DIAGRAM GARMIN G500 TXI B212	
DWG:	E2006-11-1	REV:	F
		SHEET:	13 OF 13
<small>COPYRIGHT © 2022 BY EAGLE COPTERS MAINTENANCE LTD THIS DOCUMENT IS PRIVATE AND CONFIDENTIAL AND IS SUPPLIED ON THE EXPRESS CONDITION THAT IT IS NOT TO BE USED FOR ANY PURPOSE OR COPIED OR COMMUNICATED TO ANY OTHER PERSON WITHOUT WRITTEN PERMISSION FROM EAGLE COPTERS MAINTENANCE LTD.</small>			