

REV	DESCRIPTION	DATE
A	NEW ISSUE	09-09-2021
B	TERMINAL BLOCK PINS REVISED	15-10-2021
C	CONFIG ADDED WITH NO DME AND DUAL GTN 750 XI	16-12-2022
D	ADDED -015 CONFIGURATION	12-02-2024
E	REPLACED ETHERNET CABLE WITH E40424 FOR -013	19-08-2024
F	REVISED ITEMS 17 & 24 P/N, UPDATED COAX CONNECTORS FOR -015 INSTL	12-05-2025
G	INCORPORATED ECN-212-039. ADDED -017 CONFIGURATION. ADDED ITEM 37 TO BOM	15-08-2025

CONTINUED ON SHEET 2

REF	REF	REF	REF	25	RGS10-48	ANTENNA, GLIDESLOPE	DAYTON-GRANGER
1	1	1	1	24	PE9154	CONNECTOR, BULKHEAD TNC	PASTERNAK
AR	AR	-	AR	23	392404	CABLE, ETHERNET	CARLISLE
-	-	16	16	22	190112	CONNECTOR, BNC	PIC
15	AR	AR	AR	21	S44193	CABLE, COAX	PIC
1	1	1	1	20	CI-292-2	ANTENNA, COMM	COMANT
REF	REF	REF	REF	19	013-00235-00	ANTENNA, GPS	GARMIN
REF	REF	REF	REF	18	DMN4-4	ANTENNA, VOR/LOC	DORNE AND MARGOLIN
1	1	1	1	17	CI 2480-200	ANTENNA, GPS/COMM	COMANT
1	1	1	1	16	ZFSC-2-1B+	COXIAL POWER SPLITTER	MINI CIRCUITS
1	1	1	1	15	CI 507	ANTENNA, DIPLEXER	COMANT
13	1	1	-	14	011-04631-00 ALT. 011-04631-01	GTN 650 XI	GARMIN
18	1	1	1	13	DMN4-4-2	CABLE ASSY, VOR/LOC	DRONE AND MARGOLIN
2	2	2	2	12	011-00979-03	KIT, CONFIGURATION MODULE	GARMIN
13	14	2	2	11	125-00084-00	BACKSHELL	GARMIN
13	14	2	2	10	125-00083-00	BACKSHELL	GARMIN
13	14	2	2	9	125-00082-00	BACKSHELL	GARMIN
13	14	2	2	8	125-00085-00	BACKSHELL	GARMIN
13	14	AR	AR	7	336-00021-00	CONTACT, PIN	GARMIN
13	14	2	2	6	330-00185-62	CONNECTOR, PLUG	GARMIN
13	14	2	2	5	330-00185-44	CONNECTOR, PLUG	GARMIN
13	14	2	2	4	330-00185-26	CONNECTOR, PLUG	GARMIN
13	14	2	2	3	330-00185-78	CONNECTOR, PLUG	GARMIN
4	4	4	4	2	MS22073-5	CIRCUIT BREAKER, 5A	
14	1	1	2	1	011-04634-00 ALT. 011-04634-01	GTN 750 XI	GARMIN
					-017	GTN 650/750 XI WITH GI 275 INSTALLED	
					-015	GTN 650/750 XI WITHOUT DME INSTALLED	
					-013	DUAL GTN 750 XI WITHOUT DME INSTALLED	
					-011	GTN 650/750 XI WITH DME INSTALLED	
-017 QTY	-015 QTY	-013 QTY	-011 QTY	ITEM	PART NUMBER	DESCRIPTION	REMARKS

NOTES:

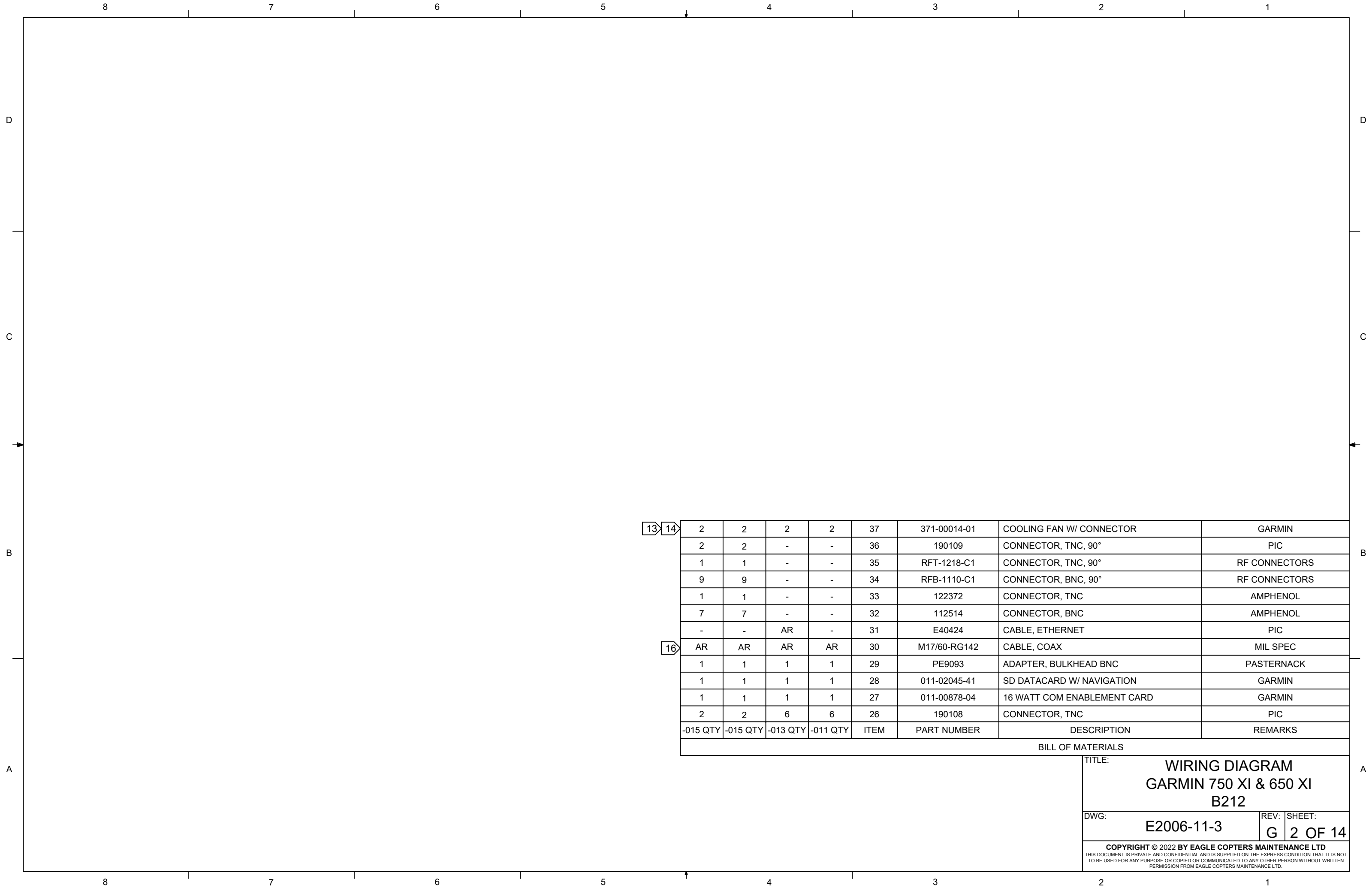
- PERFORM ALL WORK IN ACCORDANCE WITH BELL HELICOPTERS STANDARD PRACTICES MANUAL BHT-ELEC-SPM.
- ALL NEW UNSHIELDED WIRE USE M22759/41-(XX)-9 OR EQUIVALENT TYPE WIRE. (M22759/41-(XX)-9 IS NOT INTENDED TO BE USED IN SOLDER APPLICATIONS, SOLDERABILITY CAN BE ACHIEVED WITH THE PROPER SOLDER. USE CRIMP SPLICES FOR REPAIR). ALL WIRES 22 AWG UNLESS OTHERWISE SPECIFIED BY WIRE CODE. ALL JUMPERS TO BE LESS THAN 6 INCHES.
- ALL NEW SHIELDED WIRE USE M27500-(XX)SM(X)N23 OR EQUIVALENT TYPE WIRE. (M27500-(XX)SM(X)N23 IS NOT INTENDED TO BE USED IN SOLDER APPLICATIONS, SOLDERABILITY CAN BE ACHIEVED WITH THE PROPER SOLDER. USE CRIMP SPLICES FOR REPAIR). SOLDER SLEEVES SHALL USE SN96 SOLDER, USE P/N S200-X-00 OR EQUIVALENT.
- ALL SHIELD TERMINATIONS SHALL BE INSTALLED PER MIL-S-83519 OR EQUIVALENT. SHIELD TERMINATIONS SHOWN AS "DAISY-CHAINED" ARE FOR DRAWING CLARITY ONLY. INDIVIDUAL SHIELD EXTENSIONS SHALL BE SPLICED AT A COMMON TIE POINT TO THE TERMINATING WIRES. THE BACK SHELL OR AIRFRAME GROUND MAY BE USED.
- ALL AIRFRAME GROUNDS SHALL BE VIA LUG OR GROUNDING BLOCK AND PROVIDE SEPARATE GROUND STUD LOCATIONS FOR DC POWER GROUNDS, AC POWER GROUNDS, CHASSIS GROUNDS, SIGNAL GROUNDS AND SHIELD GROUNDS.
- ALL EQUIPMENT BONDING TO ADJACENT AIRFRAME STRUCTURE TO BE 0.0025 OHM OR LESS. ALL ELECTRICAL GROUNDING AND BONDING TO BE INSTALLED IN ACCORDANCE WITH THE LATEST REVISION OF BHT-ELEC-SPM CHAPTER 8.
- ALL TERMINALS TO BE INSTALLED IN ACCORDANCE WITH THE LATEST REVISION OF BHT-ELEC-SPM PARAGRAPH 4-9.
- ALL CONNECTORS TO BE INSTALLED IN ACCORDANCE WITH THE LATEST REVISION OF BHT-ELEC-SPM CHAPTER 5. ENSURE ALL UNUSED CONNECTOR CONTACTS ARE FILLED WITH SPARE PINS/SOCKETS OR PLASTIC GROMMET SEALING PLUGS. ENSURE ALL BULKHEAD MOUNTED CONNECTORS ARE PROPERLY BONDED TO AIRFRAME.
- ENSURE ALL SWITCHES, CIRCUIT BREAKERS, AND REMOTE MOUNTED BOXES ARE LABELED WITH A CONSISTENT SIZE, FONT, COLOR, BACKGROUND AND ARE ILLUMINATED CONSISTENT AS EXISTING LABELS.
- ROUTE ALL WIRES AND CABLES WITH EXISTING WIRE ROUTES WHERE POSSIBLE AND CLAMP IN ACCORDANCE WITH THE LATEST REVISION OF BHT-ELEC-SPM CHAPTER 6. WIRES MUST BE ROUTED WITH A MINIMUM OF 6 INCHES OF SEPARATION FROM OXYGEN AND FLUID LINES (MIN 2 INCHES IF WIRES IN CONDUIT).
- INSTALL SYSTEM IN ACCORDANCE WITH THE LATEST REVISION OF THE MANUFACTURERS INSTALLATION MANUAL.
- LOWERCASE LETTER CONNECTOR PIN DESIGNATORS ARE SHOWN AS UNDERLINED UPPERCASE LETTERS.
13. INCLUDED IN GTN 650 UNIT AND INSTALLATION KIT 010-01999-02 (ALT. 010-01999-06), WHICH INCLUDES CONNECTOR KIT 011-02325-02 AND BACKPLATE KIT 011-02245-02.
14. INCLUDED IN GTN 750 UNIT AND INSTALLATION KIT 010-02002-02 (ALT. 010-02002-06), WHICH INCLUDES CONNECTOR KIT 011-02326-02 AND BACKPLATE KIT 011-02246-02.
15. THE CUMULATIVE COAX CABLE LENGTH BETWEEN LRU AND ANTENNA NOT TO EXCEED 50 FT WHEN USING P/N S44193 FOR GPS.
16. THE CUMULATIVE COAX CABLE LENGTH BETWEEN LRU AND ANTENNA NOT TO EXCEED 35 FT WHEN USING P/N RG142B FOR GPS.
- POWER WIRES NOT TO EXCEED 20 FT FROM A 5A CIRCUIT BREAKER.
18. COMES WITH ITEM 18, ANTENNA, VOR/LOC, CAN BE ORDERED SEPARATELY, IF REQUIRED.
19. CAP AND STOW UNUSED WIRES IN ACCORDANCE WITH THE LATEST REVISION OF BHT-ELEC-SPM.

PREPARED	gs
REVIEWED	ds
RELEASED	
SCALE:	NTS



TITLE: <b>WIRING DIAGRAM GARMIN 750 XI &amp; 650 XI B212</b>		DWG: <b>E2006-11-3</b>
REV: <b>G</b>	SHEET: <b>1 OF 14</b>	

THIS DRAWING IS UNCONTROLLED UNLESS OPENED DIRECTLY FROM ECML'S CONTROLLED REPOSITORY



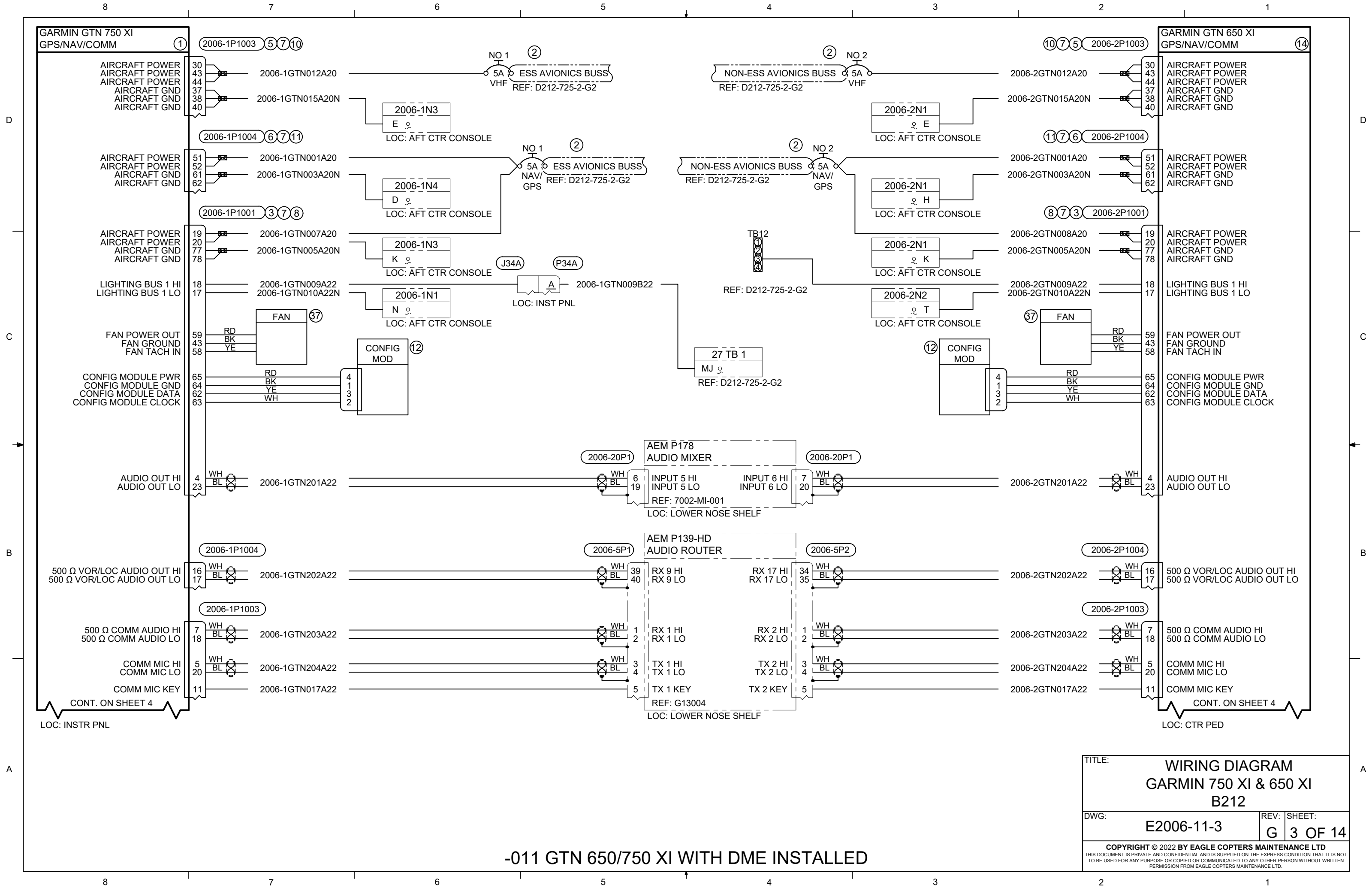
13	14	2	2	2	2	37	371-00014-01	COOLING FAN W/ CONNECTOR	GARMIN
		2	2	-	-	36	190109	CONNECTOR, TNC, 90°	PIC
		1	1	-	-	35	RFT-1218-C1	CONNECTOR, TNC, 90°	RF CONNECTORS
		9	9	-	-	34	RFB-1110-C1	CONNECTOR, BNC, 90°	RF CONNECTORS
		1	1	-	-	33	122372	CONNECTOR, TNC	AMPHENOL
		7	7	-	-	32	112514	CONNECTOR, BNC	AMPHENOL
		-	-	AR	-	31	E40424	CABLE, ETHERNET	PIC
16		AR	AR	AR	AR	30	M17/60-RG142	CABLE, COAX	MIL SPEC
		1	1	1	1	29	PE9093	ADAPTER, BULKHEAD BNC	PASTERNAK
		1	1	1	1	28	011-02045-41	SD DATACARD W/ NAVIGATION	GARMIN
		1	1	1	1	27	011-00878-04	16 WATT COM ENABLEMENT CARD	GARMIN
		2	2	6	6	26	190108	CONNECTOR, TNC	PIC
		-015 QTY	-015 QTY	-013 QTY	-011 QTY	ITEM	PART NUMBER	DESCRIPTION	REMARKS

BILL OF MATERIALS

TITLE:  
**WIRING DIAGRAM  
GARMIN 750 XI & 650 XI  
B212**

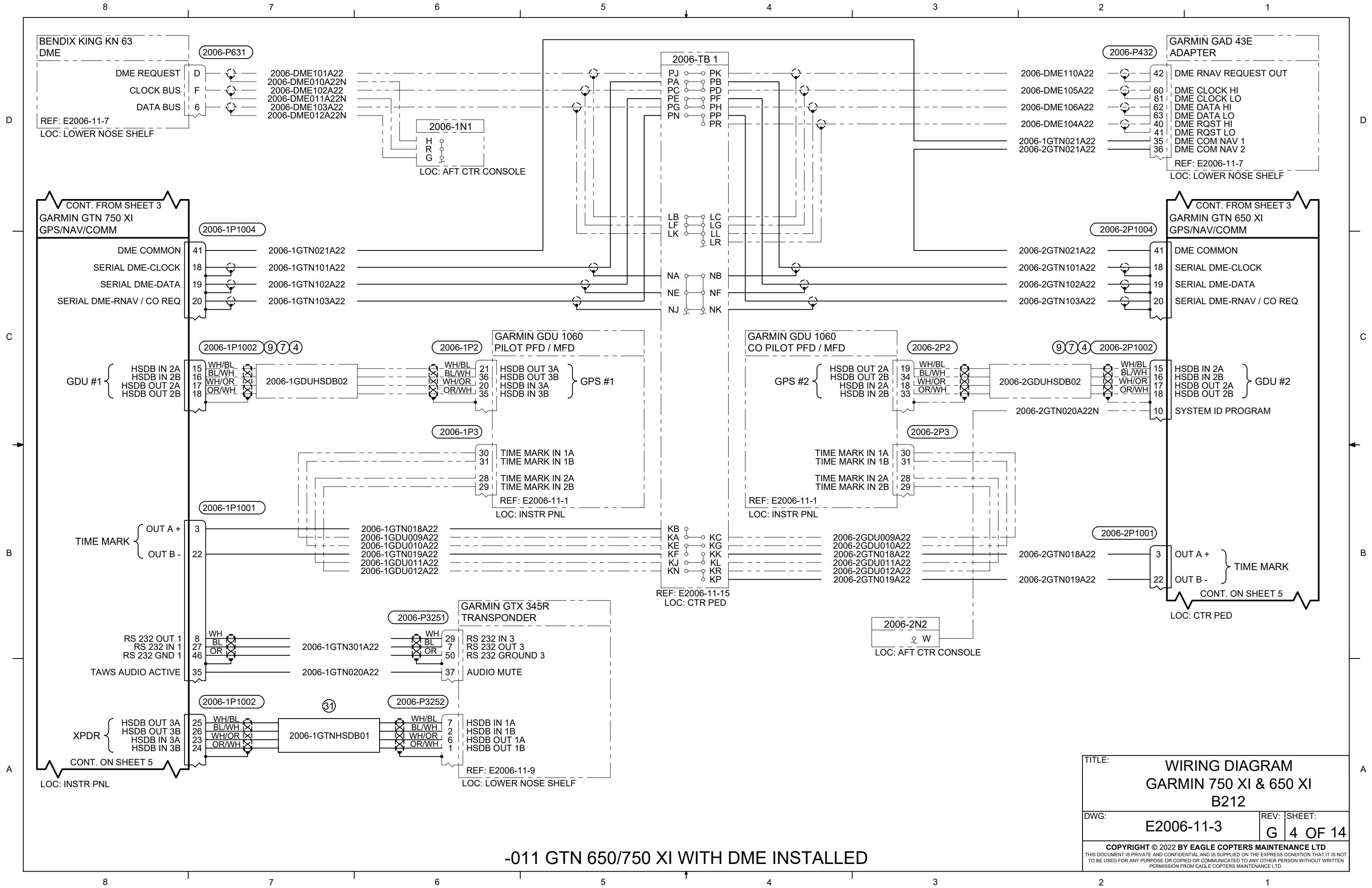
DWG: <b>E2006-11-3</b>	REV: <b>G</b>	SHEET: <b>2 OF 14</b>
---------------------------	------------------	--------------------------

COPYRIGHT © 2022 BY EAGLE COPTERS MAINTENANCE LTD  
THIS DOCUMENT IS PRIVATE AND CONFIDENTIAL AND IS SUPPLIED ON THE EXPRESS CONDITION THAT IT IS NOT  
TO BE USED FOR ANY PURPOSE OR COPIED OR COMMUNICATED TO ANY OTHER PERSON WITHOUT WRITTEN  
PERMISSION FROM EAGLE COPTERS MAINTENANCE LTD.



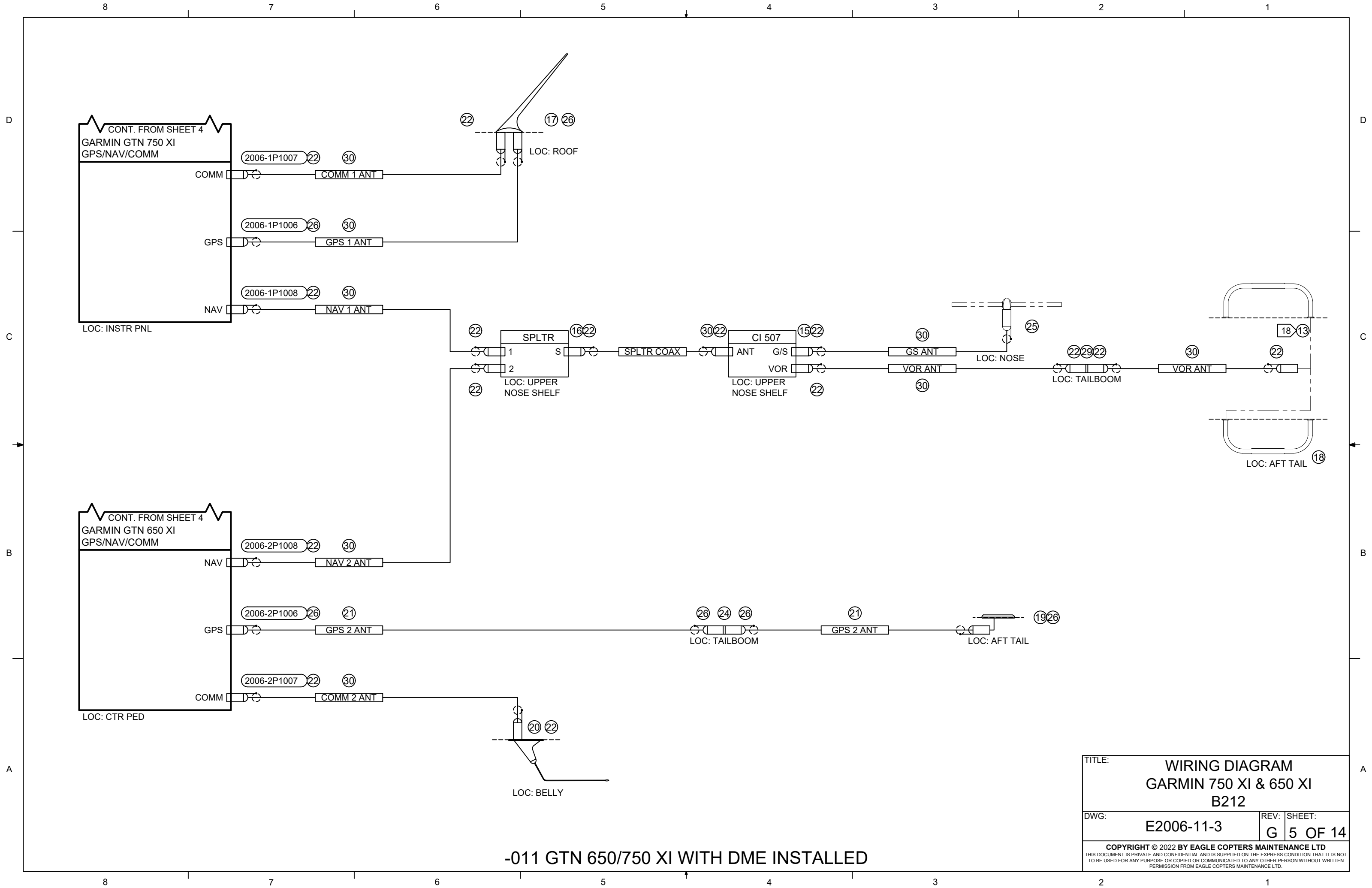
-011 GTN 650/750 XI WITH DME INSTALLED

TITLE:		WIRING DIAGRAM GARMIN 750 XI & 650 XI B212	
DWG:	E2006-11-3	REV:	G
SHEET:		3 OF 14	
<small>COPYRIGHT © 2022 BY EAGLE COPTERS MAINTENANCE LTD THIS DOCUMENT IS PRIVATE AND CONFIDENTIAL AND IS SUPPLIED ON THE EXPRESS CONDITION THAT IT IS NOT TO BE USED FOR ANY PURPOSE OR COPIED OR COMMUNICATED TO ANY OTHER PERSON WITHOUT WRITTEN PERMISSION FROM EAGLE COPTERS MAINTENANCE LTD.</small>			



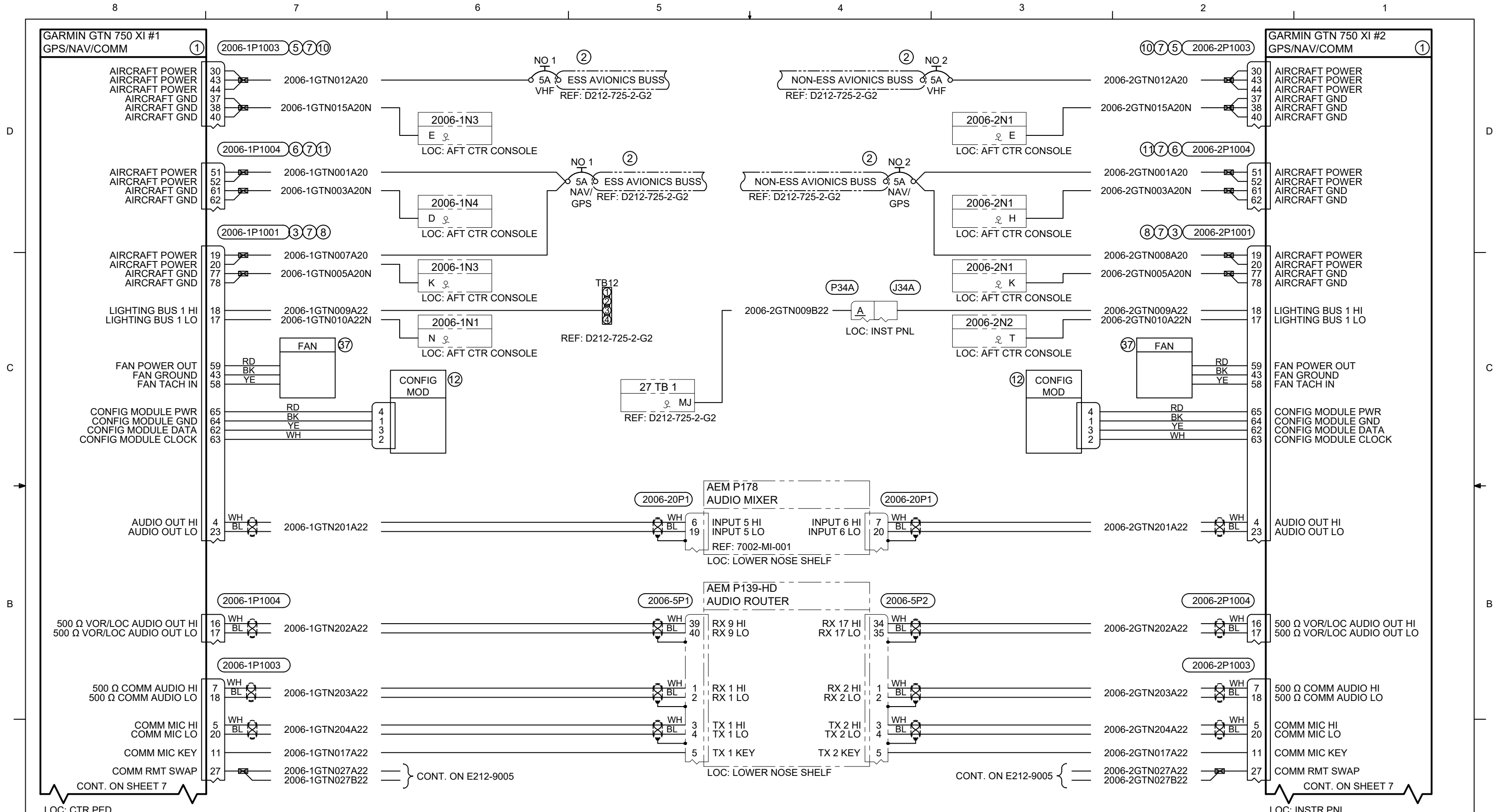
TITLE:		<b>WIRING DIAGRAM GARMIN 750 XI &amp; 650 XI B212</b>	
DWG:	<b>E2006-11-3</b>	REV:	<b>G</b>
		SHEET:	<b>4 OF 14</b>
<small>COPYRIGHT © 2022 BY EAGLE COPTERS MAINTENANCE LTD THIS DOCUMENT IS PRIVATE AND CONFIDENTIAL AND IS SUPPLIED ON THE EXPRESS CONDITION THAT IT IS NOT TO BE USED FOR ANY PURPOSE OR COPIED OR COMMUNICATED TO ANY OTHER PERSON WITHOUT WRITTEN PERMISSION FROM EAGLE COPTERS MAINTENANCE LTD.</small>			

**-011 GTN 650/750 XI WITH DME INSTALLED**



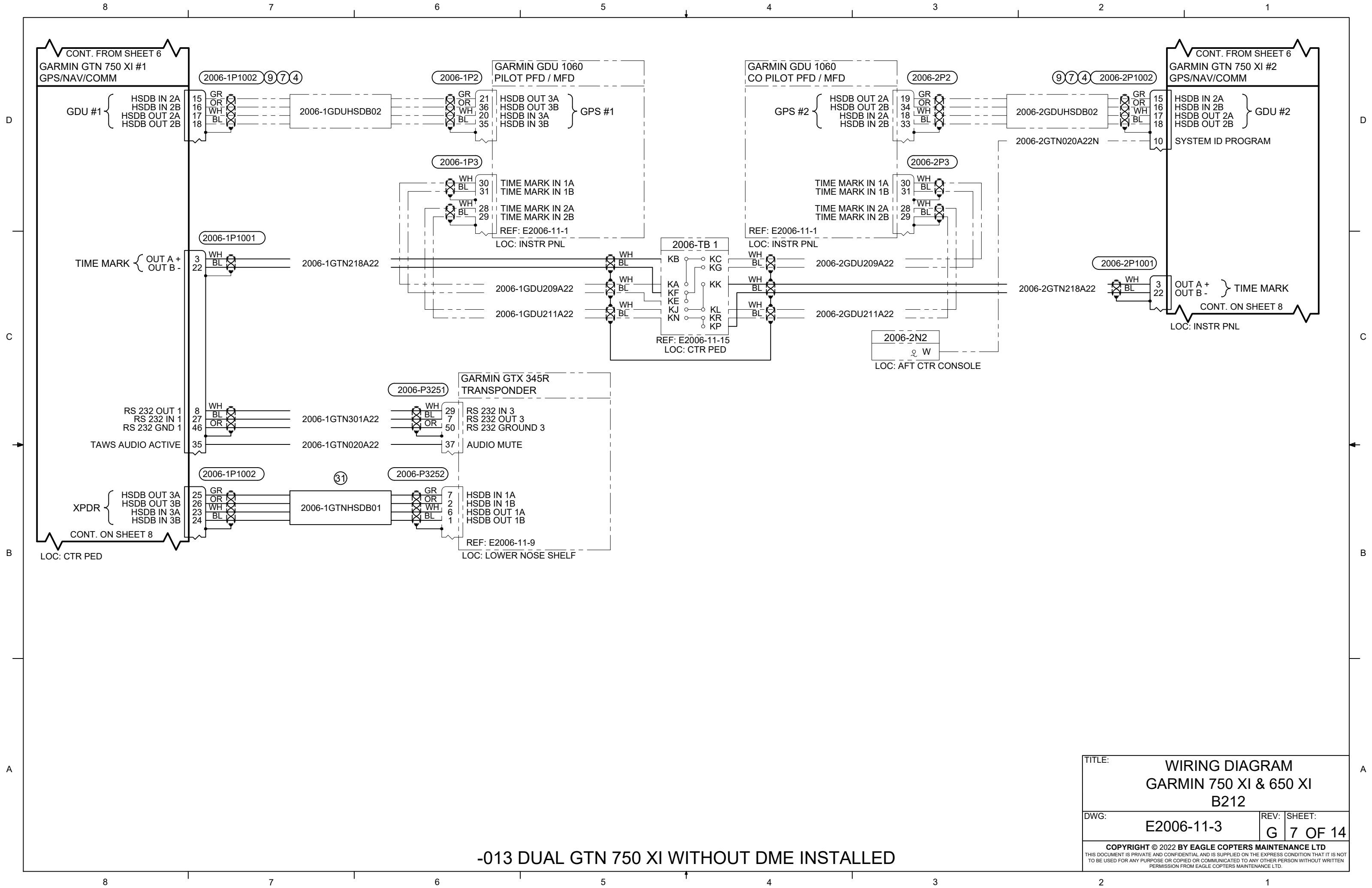
-011 GTN 650/750 XI WITH DME INSTALLED

TITLE:		WIRING DIAGRAM GARMIN 750 XI & 650 XI B212	
DWG:	E2006-11-3	REV:	G
SHEET:		5 OF 14	
<small>COPYRIGHT © 2022 BY EAGLE COPTERS MAINTENANCE LTD THIS DOCUMENT IS PRIVATE AND CONFIDENTIAL AND IS SUPPLIED ON THE EXPRESS CONDITION THAT IT IS NOT TO BE USED FOR ANY PURPOSE OR COPIED OR COMMUNICATED TO ANY OTHER PERSON WITHOUT WRITTEN PERMISSION FROM EAGLE COPTERS MAINTENANCE LTD.</small>			



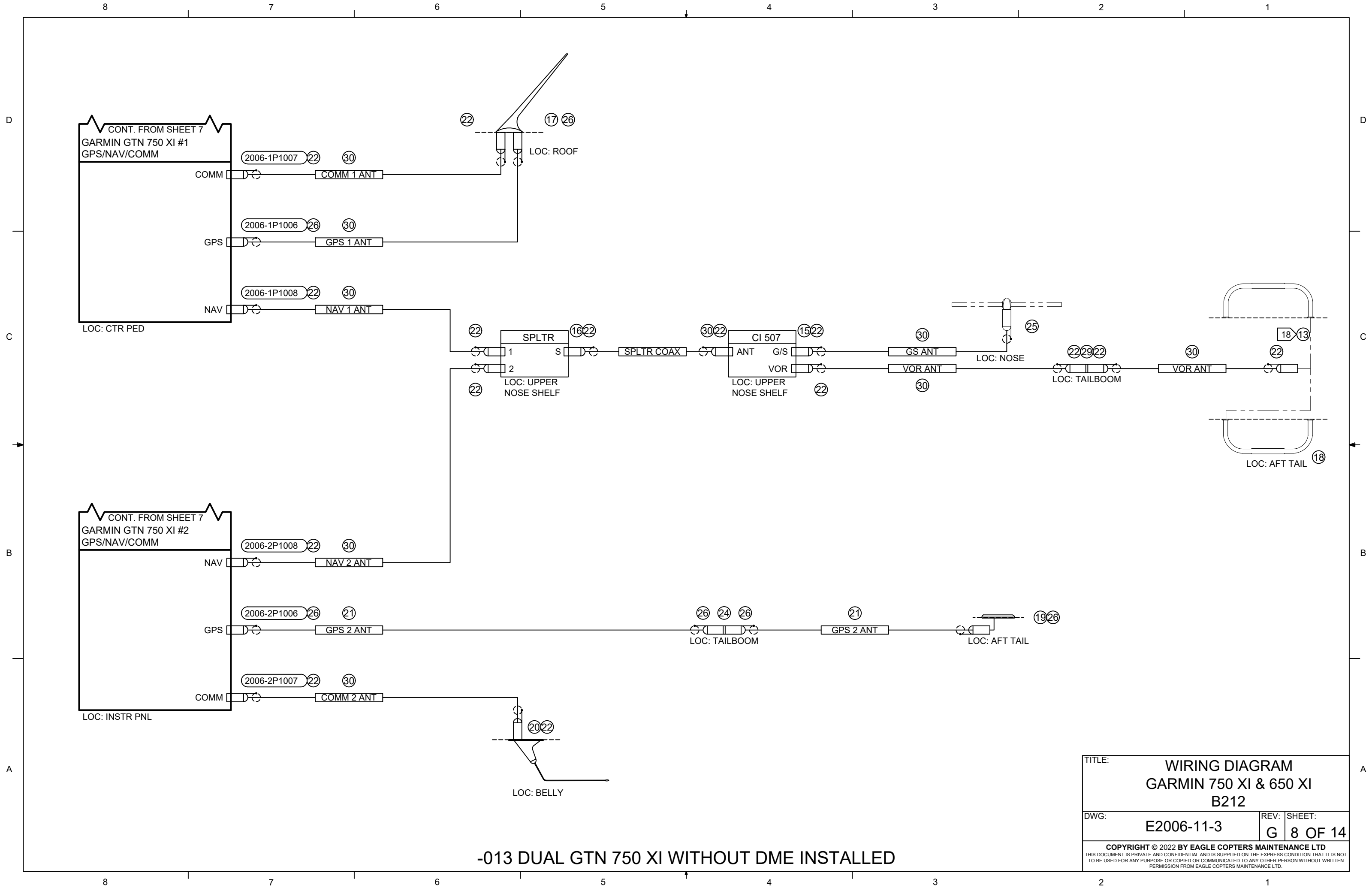
**-013 DUAL GTN 750 XI WITHOUT DME INSTALLED**

TITLE:		<b>WIRING DIAGRAM GARMIN 750 XI &amp; 650 XI B212</b>	
DWG:	<b>E2006-11-3</b>	REV:	<b>G</b>
		SHEET:	<b>6 OF 14</b>
<small>COPYRIGHT © 2022 BY EAGLE COPTERS MAINTENANCE LTD THIS DOCUMENT IS PRIVATE AND CONFIDENTIAL AND IS SUPPLIED ON THE EXPRESS CONDITION THAT IT IS NOT TO BE USED FOR ANY PURPOSE OR COPIED OR COMMUNICATED TO ANY OTHER PERSON WITHOUT WRITTEN PERMISSION FROM EAGLE COPTERS MAINTENANCE LTD.</small>			



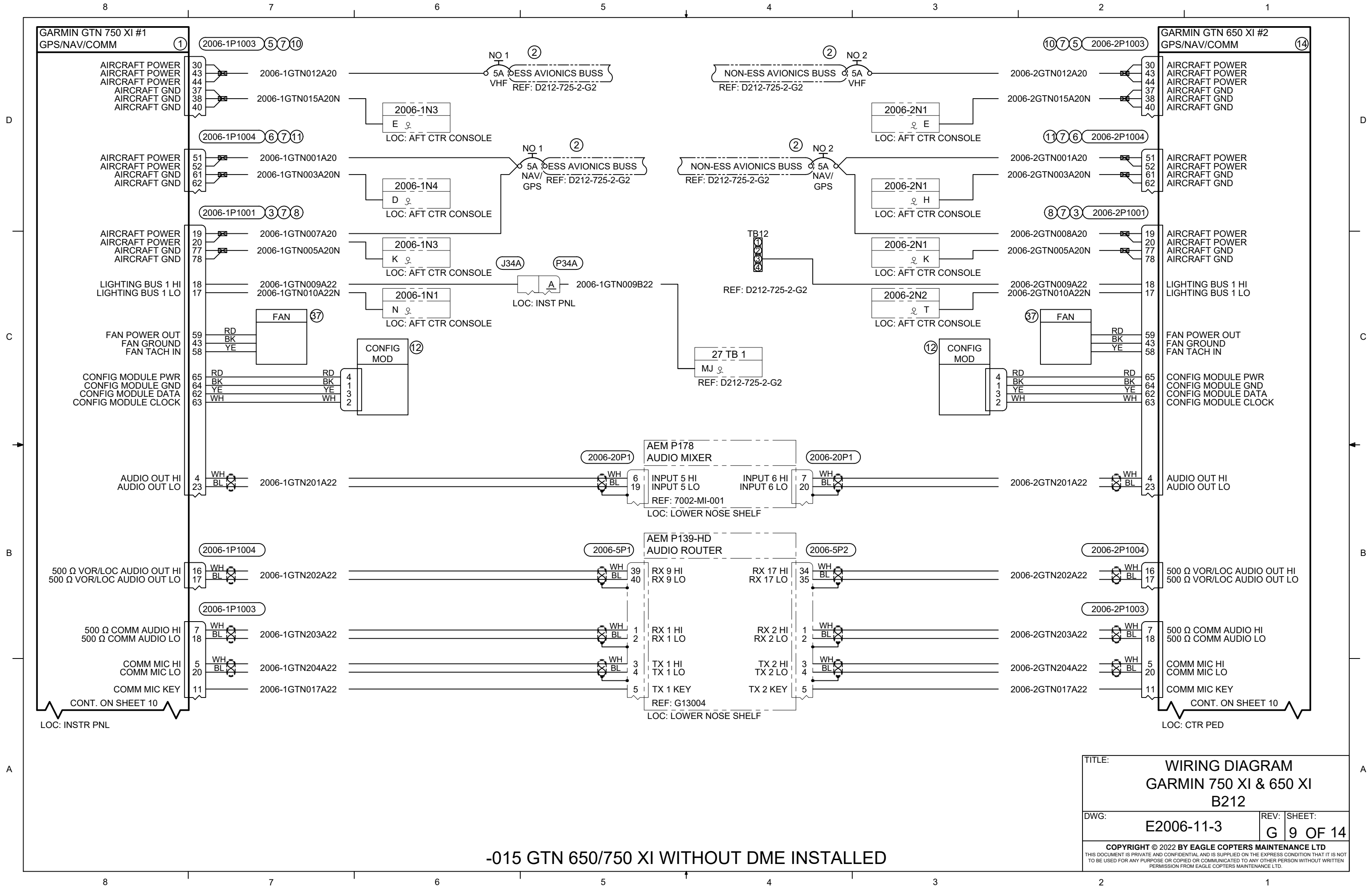
**-013 DUAL GTN 750 XI WITHOUT DME INSTALLED**

TITLE:		<b>WIRING DIAGRAM GARMIN 750 XI &amp; 650 XI B212</b>	
DWG:	<b>E2006-11-3</b>	REV:	<b>G 7 OF 14</b>
<small>COPYRIGHT © 2022 BY EAGLE COPTERS MAINTENANCE LTD THIS DOCUMENT IS PRIVATE AND CONFIDENTIAL AND IS SUPPLIED ON THE EXPRESS CONDITION THAT IT IS NOT TO BE USED FOR ANY PURPOSE OR COPIED OR COMMUNICATED TO ANY OTHER PERSON WITHOUT WRITTEN PERMISSION FROM EAGLE COPTERS MAINTENANCE LTD.</small>			



-013 DUAL GTN 750 XI WITHOUT DME INSTALLED

TITLE:		WIRING DIAGRAM GARMIN 750 XI & 650 XI B212	
DWG:	E2006-11-3	REV:	G
SHEET:		8 OF 14	
<small>COPYRIGHT © 2022 BY EAGLE COPTERS MAINTENANCE LTD THIS DOCUMENT IS PRIVATE AND CONFIDENTIAL AND IS SUPPLIED ON THE EXPRESS CONDITION THAT IT IS NOT TO BE USED FOR ANY PURPOSE OR COPIED OR COMMUNICATED TO ANY OTHER PERSON WITHOUT WRITTEN PERMISSION FROM EAGLE COPTERS MAINTENANCE LTD.</small>			

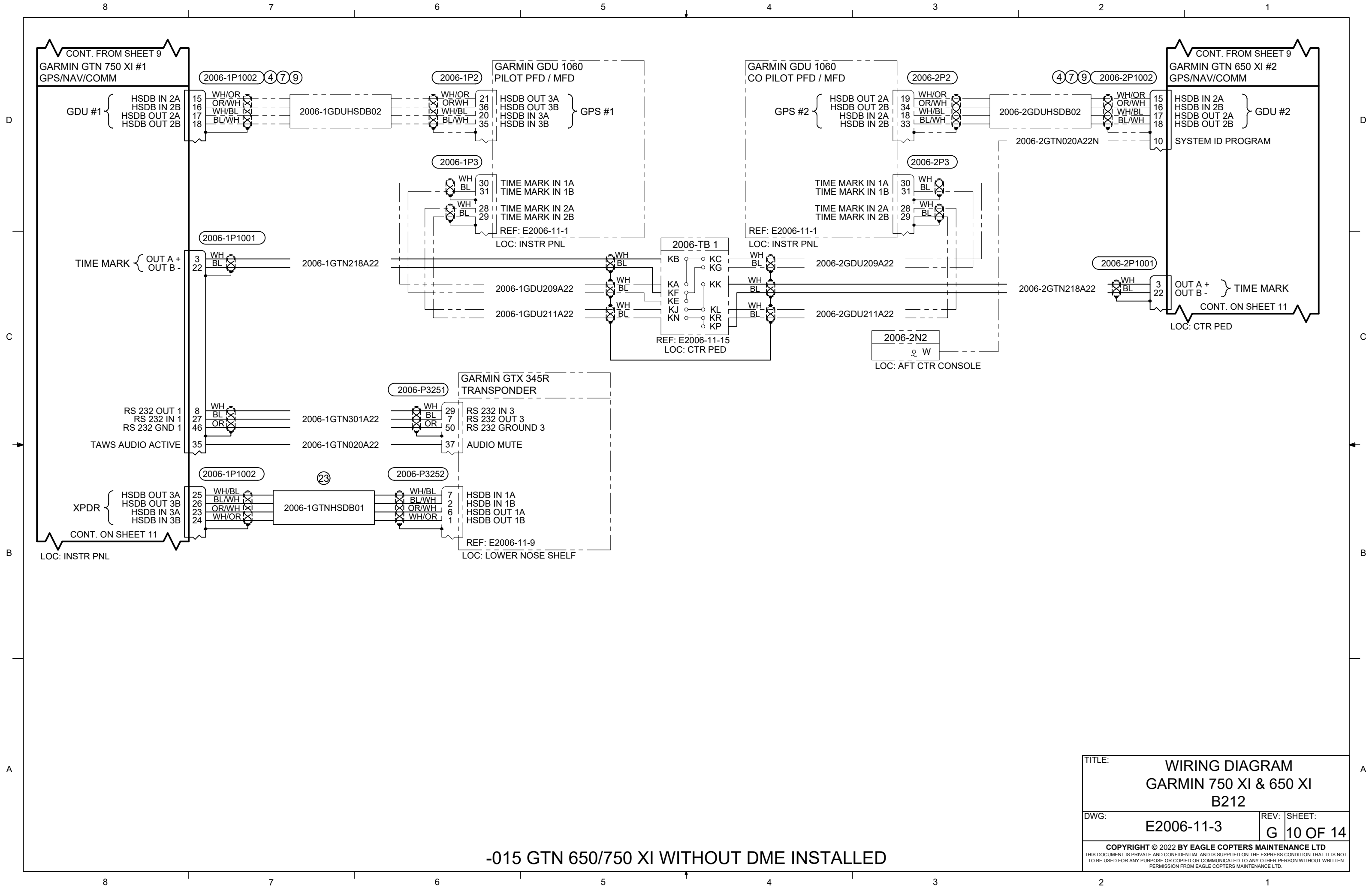


CONT. ON SHEET 10  
LOC: INSTR PNL

CONT. ON SHEET 10  
LOC: CTR PED

TITLE:		<b>WIRING DIAGRAM GARMIN 750 XI &amp; 650 XI B212</b>	
DWG:	<b>E2006-11-3</b>	REV:	<b>G</b>
		SHEET:	<b>9 OF 14</b>
<small>COPYRIGHT © 2022 BY EAGLE COPTERS MAINTENANCE LTD THIS DOCUMENT IS PRIVATE AND CONFIDENTIAL AND IS SUPPLIED ON THE EXPRESS CONDITION THAT IT IS NOT TO BE USED FOR ANY PURPOSE OR COPIED OR COMMUNICATED TO ANY OTHER PERSON WITHOUT WRITTEN PERMISSION FROM EAGLE COPTERS MAINTENANCE LTD.</small>			

**-015 GTN 650/750 XI WITHOUT DME INSTALLED**



CONT. FROM SHEET 9  
 GARMIN GTN 750 XI #1  
 GPS/NAV/COMM

CONT. FROM SHEET 9  
 GARMIN GTN 650 XI #2  
 GPS/NAV/COMM

GDU #1  
 HSDB IN 2A  
 HSDB IN 2B  
 HSDB OUT 2A  
 HSDB OUT 2B

GDU #2  
 HSDB IN 2A  
 HSDB IN 2B  
 HSDB OUT 2A  
 HSDB OUT 2B

TIME MARK  
 OUT A +  
 OUT B -

TIME MARK  
 OUT A +  
 OUT B -

XPDR  
 HSDB OUT 3A  
 HSDB OUT 3B  
 HSDB IN 3A  
 HSDB IN 3B

CONT. ON SHEET 11  
 LOC: INSTR PNL

GARMIN GTX 345R  
 TRANSPONDER

REF: E2006-11-9  
 LOC: LOWER NOSE SHELF

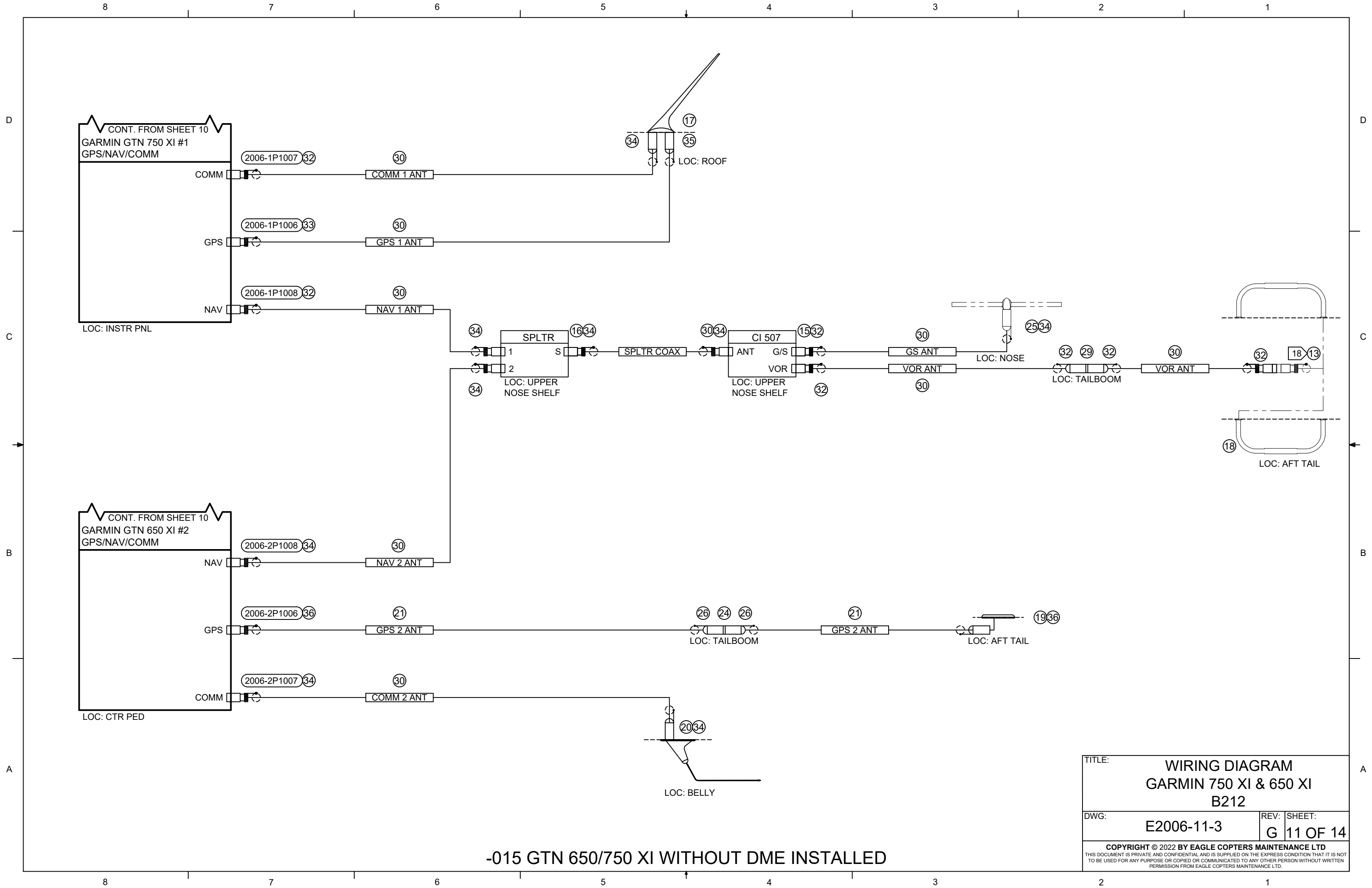
GARMIN GDU 1060  
 CO PILOT PFD / MFD

REF: E2006-11-1  
 LOC: INSTR PNL

2006-2N2  
 W  
 LOC: AFT CTR CONSOLE

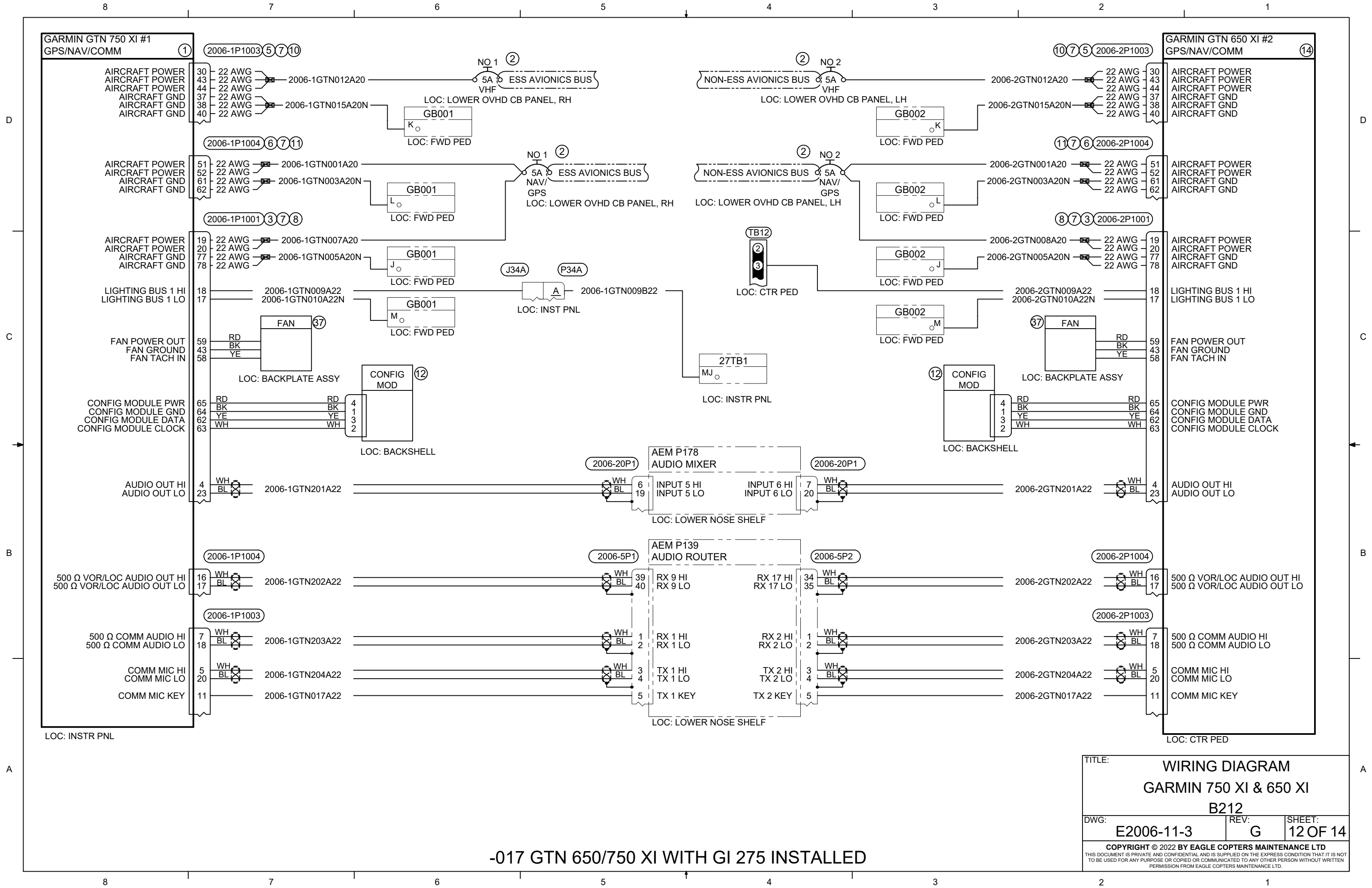
TITLE:		WIRING DIAGRAM GARMIN 750 XI & 650 XI B212	
DWG:	E2006-11-3	REV:	SHEET:
		G	10 OF 14
<small>COPYRIGHT © 2022 BY EAGLE COPTERS MAINTENANCE LTD        THIS DOCUMENT IS PRIVATE AND CONFIDENTIAL AND IS SUPPLIED ON THE EXPRESS CONDITION THAT IT IS NOT        TO BE USED FOR ANY PURPOSE OR COPIED OR COMMUNICATED TO ANY OTHER PERSON WITHOUT WRITTEN        PERMISSION FROM EAGLE COPTERS MAINTENANCE LTD.</small>			

-015 GTN 650/750 XI WITHOUT DME INSTALLED



-015 GTN 650/750 XI WITHOUT DME INSTALLED

TITLE:		WIRING DIAGRAM GARMIN 750 XI & 650 XI B212	
DWG:	E2006-11-3	REV:	SHEET: G 11 OF 14
<small>COPYRIGHT © 2022 BY EAGLE COPTERS MAINTENANCE LTD THIS DOCUMENT IS PRIVATE AND CONFIDENTIAL AND IS SUPPLIED ON THE EXPRESS CONDITION THAT IT IS NOT TO BE USED FOR ANY PURPOSE OR COPIED OR COMMUNICATED TO ANY OTHER PERSON WITHOUT WRITTEN PERMISSION FROM EAGLE COPTERS MAINTENANCE LTD.</small>			



**GARMIN GTN 750 XI #1**  
GPS/NAV/COMM

AIRCRAFT POWER 30  
AIRCRAFT POWER 43  
AIRCRAFT POWER 44  
AIRCRAFT GND 37  
AIRCRAFT GND 38  
AIRCRAFT GND 40

AIRCRAFT POWER 51  
AIRCRAFT POWER 52  
AIRCRAFT GND 61  
AIRCRAFT GND 62

AIRCRAFT POWER 19  
AIRCRAFT POWER 20  
AIRCRAFT GND 77  
AIRCRAFT GND 78

LIGHTING BUS 1 HI 18  
LIGHTING BUS 1 LO 17

FAN POWER OUT 59  
FAN GROUND 43  
FAN TACH IN 58

CONFIG MODULE PWR 65  
CONFIG MODULE GND 64  
CONFIG MODULE DATA 62  
CONFIG MODULE CLOCK 63

AUDIO OUT HI 4  
AUDIO OUT LO 23

500 Ω VOR/LOC AUDIO OUT HI 16  
500 Ω VOR/LOC AUDIO OUT LO 17

500 Ω COMM AUDIO HI 7  
500 Ω COMM AUDIO LO 18

COMM MIC HI 5  
COMM MIC LO 20

COMM MIC KEY 11

**GARMIN GTN 650 XI #2**  
GPS/NAV/COMM

AIRCRAFT POWER 30  
AIRCRAFT POWER 43  
AIRCRAFT POWER 44  
AIRCRAFT GND 37  
AIRCRAFT GND 38  
AIRCRAFT GND 40

AIRCRAFT POWER 51  
AIRCRAFT POWER 52  
AIRCRAFT GND 61  
AIRCRAFT GND 62

AIRCRAFT POWER 19  
AIRCRAFT POWER 20  
AIRCRAFT GND 77  
AIRCRAFT GND 78

LIGHTING BUS 1 HI 18  
LIGHTING BUS 1 LO 17

FAN POWER OUT 59  
FAN GROUND 43  
FAN TACH IN 58

CONFIG MODULE PWR 65  
CONFIG MODULE GND 64  
CONFIG MODULE DATA 62  
CONFIG MODULE CLOCK 63

AUDIO OUT HI 4  
AUDIO OUT LO 23

500 Ω VOR/LOC AUDIO OUT HI 16  
500 Ω VOR/LOC AUDIO OUT LO 17

500 Ω COMM AUDIO HI 7  
500 Ω COMM AUDIO LO 18

COMM MIC HI 5  
COMM MIC LO 20

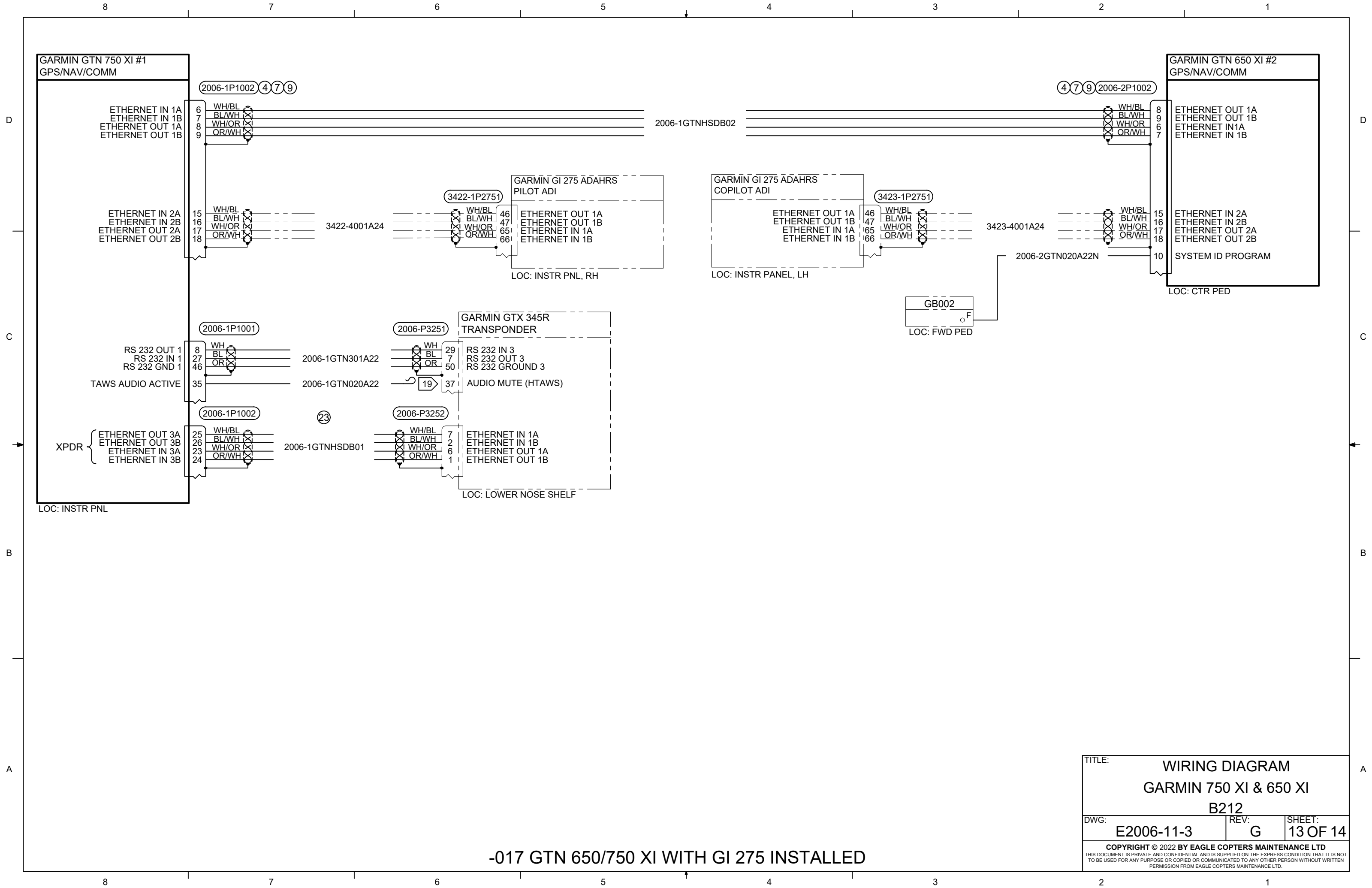
COMM MIC KEY 11

TITLE: **WIRING DIAGRAM**  
**GARMIN 750 XI & 650 XI**  
**B212**

DWG: <b>E2006-11-3</b>	REV: <b>G</b>	SHEET: <b>12 OF 14</b>
------------------------	---------------	------------------------

COPYRIGHT © 2022 BY EAGLE COPTERS MAINTENANCE LTD  
THIS DOCUMENT IS PRIVATE AND CONFIDENTIAL AND IS SUPPLIED ON THE EXPRESS CONDITION THAT IT IS NOT TO BE USED FOR ANY PURPOSE OR COPIED OR COMMUNICATED TO ANY OTHER PERSON WITHOUT WRITTEN PERMISSION FROM EAGLE COPTERS MAINTENANCE LTD.

**-017 GTN 650/750 XI WITH GI 275 INSTALLED**



**GARMIN GTN 750 XI #1**  
GPS/NAV/COMM

ETHERNET IN 1A  
ETHERNET IN 1B  
ETHERNET OUT 1A  
ETHERNET OUT 1B

ETHERNET IN 2A  
ETHERNET IN 2B  
ETHERNET OUT 2A  
ETHERNET OUT 2B

RS 232 OUT 1  
RS 232 IN 1  
RS 232 GND 1

TAWS AUDIO ACTIVE

XPDR {  
ETHERNET OUT 3A  
ETHERNET OUT 3B  
ETHERNET IN 3A  
ETHERNET IN 3B

LOC: INSTR PNL

2006-1P1002 (4 7 9)

WH/BL  
BL/WH  
WH/OR  
OR/WH

2006-1GTNHSDB2

3422-1P2751

WH/BL  
BL/WH  
WH/OR  
OR/WH

3422-4001A24

WH/BL  
BL/WH  
WH/OR  
OR/WH

46  
47  
65  
66

ETHERNET OUT 1A  
ETHERNET OUT 1B  
ETHERNET IN 1A  
ETHERNET IN 1B

LOC: INSTR PNL, RH

2006-1P1001

WH  
BL  
OR

2006-1GTN301A22

WH  
BL  
OR

29  
7  
50

RS 232 IN 3  
RS 232 OUT 3  
RS 232 GROUND 3

AUDIO MUTE (HTAWS)

2006-1P1002 (23)

WH/BL  
BL/WH  
WH/OR  
OR/WH

2006-1GTNHSDB01

WH/BL  
BL/WH  
WH/OR  
OR/WH

7  
2  
6  
1

ETHERNET IN 1A  
ETHERNET IN 1B  
ETHERNET OUT 1A  
ETHERNET OUT 1B

LOC: LOWER NOSE SHELF

2006-1GTNHSDB2

WH/BL  
BL/WH  
WH/OR  
OR/WH

2006-1GTNHSDB02

WH/BL  
BL/WH  
WH/OR  
OR/WH

2006-1GTNHSDB02

WH/BL  
BL/WH  
WH/OR  
OR/WH

3423-1P2751

WH/BL  
BL/WH  
WH/OR  
OR/WH

3423-4001A24

WH/BL  
BL/WH  
WH/OR  
OR/WH

46  
47  
65  
66

ETHERNET OUT 1A  
ETHERNET OUT 1B  
ETHERNET IN 1A  
ETHERNET IN 1B

LOC: INSTR PANEL, LH

2006-2GTN020A22N

WH/BL  
BL/WH  
WH/OR  
OR/WH

15  
16  
17  
18

ETHERNET IN 2A  
ETHERNET IN 2B  
ETHERNET OUT 2A  
ETHERNET OUT 2B

SYSTEM ID PROGRAM

LOC: CTR PED

GB002

LOC: FWD PED

2006-2P1002 (4 7 9)

WH/BL  
BL/WH  
WH/OR  
OR/WH

2006-2P1002

WH/BL  
BL/WH  
WH/OR  
OR/WH

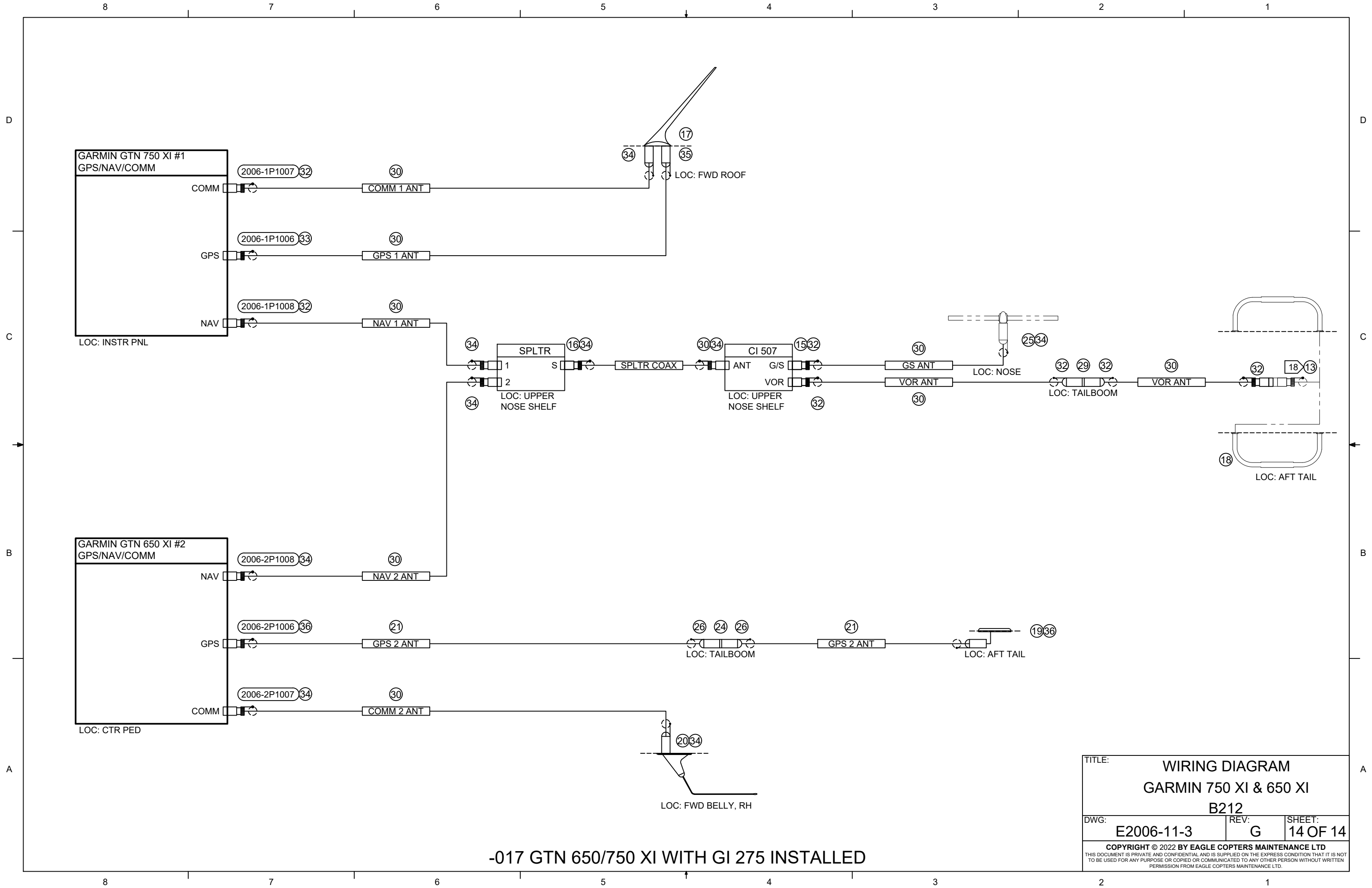
8  
9  
6  
7

ETHERNET OUT 1A  
ETHERNET OUT 1B  
ETHERNET IN 1A  
ETHERNET IN 1B

LOC: CTR PED

TITLE:		
<b>WIRING DIAGRAM</b>		
<b>GARMIN 750 XI &amp; 650 XI</b>		
<b>B212</b>		
DWG:	REV:	SHEET:
<b>E2006-11-3</b>	<b>G</b>	<b>13 OF 14</b>
<small>COPYRIGHT © 2022 BY EAGLE COPTERS MAINTENANCE LTD THIS DOCUMENT IS PRIVATE AND CONFIDENTIAL AND IS SUPPLIED ON THE EXPRESS CONDITION THAT IT IS NOT TO BE USED FOR ANY PURPOSE OR COPIED OR COMMUNICATED TO ANY OTHER PERSON WITHOUT WRITTEN PERMISSION FROM EAGLE COPTERS MAINTENANCE LTD.</small>		

**-017 GTN 650/750 XI WITH GI 275 INSTALLED**



-017 GTN 650/750 XI WITH GI 275 INSTALLED

TITLE:		
<b>WIRING DIAGRAM</b> <b>GARMIN 750 XI &amp; 650 XI</b> <b>B212</b>		
DWG:	REV:	SHEET:
E2006-11-3	G	14 OF 14
<small>COPYRIGHT © 2022 BY EAGLE COPTERS MAINTENANCE LTD          THIS DOCUMENT IS PRIVATE AND CONFIDENTIAL AND IS SUPPLIED ON THE EXPRESS CONDITION THAT IT IS NOT TO BE USED FOR ANY PURPOSE OR COPIED OR COMMUNICATED TO ANY OTHER PERSON WITHOUT WRITTEN PERMISSION FROM EAGLE COPTERS MAINTENANCE LTD.</small>		