

REV	DESCRIPTION	DATE
A	INITIAL RELEASE	16-02-2024
B	ADDED ITEMS 50, 51, 52, 53, 54 & 55 AND UPDATED -021 AND -023 CONFIGS	08-10-2024
C	ADDED ITEMS 56 THROUGH 63 AND NOTES 4 & 5. UPDATED LINE 33	27-01-2025
D	ADDED -027 CONFIGURATION. ADDED NOTE 6 AND ITEMS 62, 63, 64, 65, 66, & 67 TO BOM.	03-03-2026

CONTINUED ON SHEET 2

-027 QTY	-025 QTY	-023 QTY	-021 QTY	-019 QTY	ITEM	PART NUMBER	DESCRIPTION	REMARKS
			1		28	E2006-11-1-013	WIRING DIAGRAM, GARMIN G500TXI	DUAL GTN 750 W/O DME
				1	27	E2006-11-1-011	WIRING DIAGRAM, GARMIN G500TXI	GTN 750/650 W/ DME
	1	1	1	1	26	E2006-01-17-1	INSTALLATION, PITOT STATIC SYSTEM	WITH ADARHS & SAM
			1		25	E212-5004-013	INSTALLATION, CAMERA PROVISIONS	SPLITTER 2
			1		24	E212-5004-011	INSTALLATION, CAMERA PROVISIONS	SPLITTER 1 AND CONVERTER
1	1	1	1		23	E212-5003-013	INSTALLATION, SXM ANTENNA	GA 55A
1	1	1	1		22	E212-5003-011	INSTALLATION, SXM RECEIVER	GDL 69AH
				1	21	E2006-01-16-1	INSTALLATION, ADAPTER	GAD 43
1	1	1	1	1	20	E2006-01-15-1	INSTALLATION, ANTENNA (DME / XPDR)	CI 105
				1	19	E2006-01-14-1	INSTALLATION, DME	KN 63
		1	1	1	18	E2006-01-13-3	INSTALLATION, RAD ALT ANTENNA, FS 300.00	S67-2002
		1	1	1	17	E2006-01-13-1	INSTALLATION, RAD ALT ANTENNA, FS 280.00	S67-2002
1	1	1	1	1	16	E2006-01-12-1	INSTALLATION, RAD ALT	GRA 5500
1	1	1	1	1	15	E2006-01-11-3	INSTALLATION, TCAS I ANTENNA, BOTTOM	GA58
1	1	1	1	1	14	E2006-01-11-1	INSTALLATION, TCAS I ANTENNA, TOP	GA58
1	1	1	1	1	13	E2006-01-10-1	INSTALLATION, TCAS I	GTS 855
				1	12	E2006-01-9-1	INSTALLATION, XPDR ANTENNA	CI 105
1	1	1	1	1	11	E2006-01-8-1	INSTALLATION, XPDR	GTX 345R
1	1	1	1	1	10	E2006-01-7-1	INSTALLATION, COMM 2 ANTENNA	CI 292-2
1	1	1	1	1	9	E2006-01-6-1	INSTALLATION, GPS/COMM 1 ANTENNA	CI 2480-200
1	1	1	1	1	8	E2006-01-5-1	INSTALLATION, OAT SENSORS	GTP 59
1	1	1	1	1	7	E2006-01-4-1	INSTALLATION, GPS 2 ANTENNA	GA35, TGB MOUNT
				1	6	E2006-01-3-3	INSTALLATION, MAGNETOMETER, BS 164.23	GMU 44
				1	5	E2006-01-3-1	INSTALLATION, MAGNETOMETER, BS 122.33	GMU 44
1	1	1	1	1	4	E2006-01-2-2	INSTALLATION, ADAHRS RH	GSU 75H
1	1	1	1	1	3	E2006-01-2-1	INSTALLATION, ADAHRS LH	GSU 75H
			1		2	E2006-01-1-3	INSTALLATION, INSTRUMENT PANEL	WITH ACP CUT-OUTS
1	1			1	1	E2006-01-1-1	INSTALLATION, INSTRUMENT PANEL	WITH KNEE CUT-OUT
						-027	AVIONICS UPGRADE, EAGLE SINGLE	MSN: 31105
						-025	AVIONICS UPGRADE, EAGLE SINGLE	MSN: 30826
						-023	AVIONICS UPGRADE, EAGLE SINGLE	MSN: 35034, 35048, 35060, 35088
						-021	AVIONICS UPGRADE, EAGLE SINGLE	MSN: 30759
						-019	AVIONICS UPGRADE, EAGLE SINGLE	MSN: 31265

NOTES:

- FIGURE ILLUSTRATES ALL POSSIBLE INSTALLATION OPTIONS. ONLY THE APPLICABLE OPTIONS ARE TO BE INSTALLED FOR EACH DEFINED CONFIGURATION PER THE BILL OF MATERIALS.
- LOCATIONS SHOWN ARE APPROXIMATE. SEE INSTALLATION DRAWINGS FOR SPECIFIC LOCATIONS.
- ITEM NOT ILLUSTRATED.
- SELECTED OPTIONAL INSTALLATIONS (TECHNICAL BULLETINS) VARY BY AIRCRAFT, SEE AIRCRAFT RECORD SET FOR APPLICABILITY.
- WHEN THE TBN-212-006 OPTIONS ARE SELECTED THE E2006-11-5-1 BASELINE GRA 5500 RAD ALT INSTALLATION IS NOT APPLICABLE TO THAT AIRCRAFT.
- THIS CONFIGURATION DOES NOT INCLUDE REVERSIONARY BACKUP OF THE GI 275 ADIS AND REQUIRES THE MANDATORY INSTALLATION OF THE SH07-28 ALTIMETER, AIRSPEED INDICATOR, VERTICAL SPEED INDICATOR AND TURN & BANK INDICATOR FOR EACH PILOT IN THE POSITIONS SHOWN.

BILL OF MATERIALS

PREPARED	<i>AP</i>	 <p>COPYRIGHT © 2024 BY EAGLE COPTERS MAINTENANCE LTD THIS DOCUMENT IS PRIVATE AND CONFIDENTIAL AND IS SUPPLIED ON THE EXPRESS CONDITION THAT IT IS NOT TO BE USED FOR ANY PURPOSE OR COPIED OR COMMUNICATED TO ANY OTHER PERSON WITHOUT WRITTEN PERMISSION FROM EAGLE COPTERS MAINTENANCE LTD.</p>
REVIEWED	<i>DS</i>	
RELEASED	<i>AP</i>	
SCALE:	NTS	
TITLE:		DWG:
LAYOUT		E212-0003
AVS UPGRADE, EAGLE SINGLE		REV: D
B212		SHEET: 1 OF 5

THIS DRAWING IS UNCONTROLLED UNLESS OPENED DIRECTLY FROM ECML'S CONTROLLED REPOSITORY

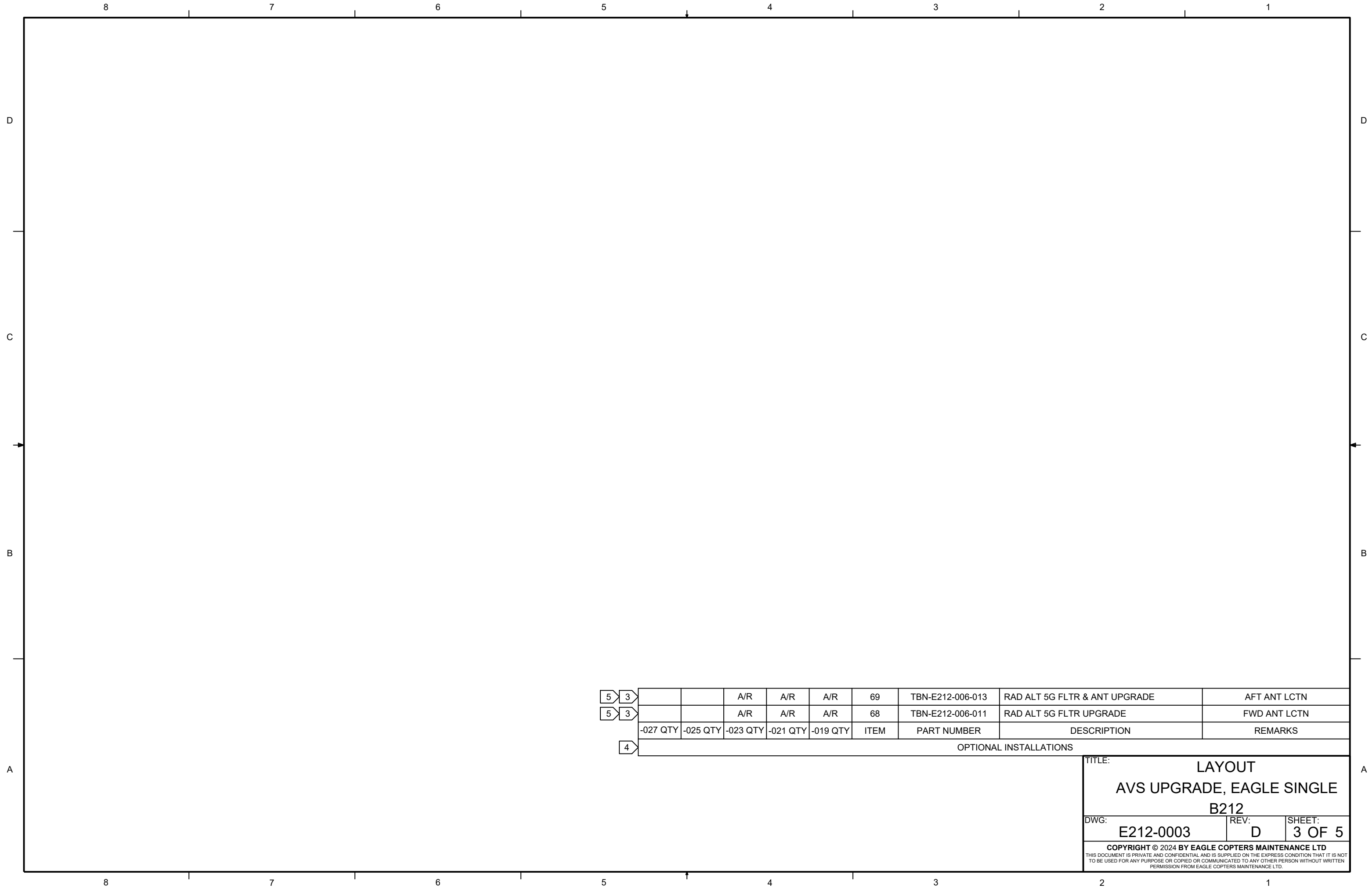
CONTINUED ON SHEET 3

3	1					67	E212-9503-011	WIRE ROUTING, GI 275 SYSTEM INSTALL	WITH GI 275
6	3	1				66	E212-9022-011	WIRING DIAGRAM, GARMIN GI 275 ADI/HSI	WITH GI 275
3	1					65	E2006-11-9-017	WIRING DIAGRAM, GARMIN GTX 345R XPDR	GI 275 & GTN 750
3	1					64	E2006-11-3-017	WIRING DIAGRAM, GTN 750 XI & 650 XI	GTN 650/750 W/ GI 275
3	1					63	E2006-01-17-3	INSTALLATION, PITOT STATIC SYSTEM	WITH GI 275
6	1					62	E2006-01-1-5	INSTALLATION, INSTRUMENT PANEL	WITH GI 275
3		1				61	E2006-12-1-017	WIRING ROUTING DIAGRAM	W/ 5G FILTER
		1				60	E2006-01-13-7	INSTALLATION, RAD ALT ANTENNA, FS 392.98	S67-2002
		1				59	E2006-01-13-5	INSTALLATION, RAD ALT ANTENNA, FS 354.98	S67-2002
		1				58	E2006-01-12-3	INSTALLATION, EXTERNAL FILTER	GRA 5500 5G FLTR
3		1				57	E2006-11-5-5	WIRING DIAGRAM, GRA 5500 RAD ALT	W/ 5G FLTR, AFT ANT
3						56	E2006-11-5-3	WIRING DIAGRAM, GRA 5500 RAD ALT	W/ 5G FLTR, FWD ANT
3		1	1			55	E2006-11-13-015	WIRING DIAGRAM, STANDBY ATTITUDE MOD	A/C DIMMING
3		1	1			54	E212-9007-013	WIRING DIAGRAM, GDL 69AH SXM RECEIVER	CARLISLE ETHERNET
	1	1	1			53	E212-1021-011	INSTALLATION, CENTRE PEDESTAL MOD	RISER PANEL
	1	1	1	1		52	E212-5014-013	INSTALLATION, MAGNETOMETER, BS 164.23	GMU 44B
	1	1	1	1		51	E212-5014-011	INSTALLATION, MAGNETOMETER, BS 122.33	GMU 44B
3		1	1			50	E2006-11-11-015	WIRING DIAGRAM, GTS 855 TCAS I	W/O DME
3				1		49	E212-9011-013	WIRING DIAGRAM, DUAL CAMERA	PROVISIONS
3						48	E212-9011-011	WIRING DIAGRAM, SINGLE CAMERA	PROVISIONS
3				1		47	E212-9007-011	WIRING DIAGRAM, GDL 69AH SXM RECEIVER	PIC ETHERNET
3			1			46	E2006-12-1-015	WIRING ROUTING DIAGRAM	GTN 750/650 W/O DME
3				1		45	E2006-12-1-013	WIRING ROUTING DIAGRAM	DUAL GTN 750 W/O DME
3					1	44	E2006-12-1-011	WIRING ROUTING DIAGRAM	GTN 750/650 W/ DME
3		1	1	1		43	E2006-11-15-013	WIRING DIAGRAM, TERMINAL BLOCKS	W/O DME
3					1	42	E2006-11-15-011	WIRING DIAGRAM, TERMINAL BLOCKS	W/ DME
3					1	41	E2006-11-13-013	WIRING DIAGRAM, STANDBY ATTITUDE MOD	PHOTOCELL DIMMING
3				1		40	E2006-11-13-011	WIRING DIAGRAM, STANDBY ATTITUDE MOD	A/C DIMMING
3				1		39	E2006-11-11-013	WIRING DIAGRAM, GTS 855 TCAS I	W/O DME
3					1	38	E2006-11-11-011	WIRING DIAGRAM, GTS 855 TCAS I	W/ DME
3		1	1			37	E2006-11-9-015	WIRING DIAGRAM, GTX 345R TRANSPONDER	GTN 750/650 W/O DME
3				1		36	E2006-11-9-013	WIRING DIAGRAM, GTX 345R TRANSPONDER	DUAL GTN 750 W/O DME
3					1	35	E2006-11-9-011	WIRING DIAGRAM, GTX 345R TRANSPONDER	GTN 750/650 W/ DME
3					1	34	E2006-11-7-1	WIRING DIAGRAM, KN63 DME	KN-63
5	3		1	1	1	33	E2006-11-5-1	WIRING DIAGRAM, GRA 5500 RAD ALT	W/O 5G FLTR, FWD ANT
3		1	1			32	E2006-11-3-015	WIRING DIAGRAM, GTN 750 XI & 650 XI	GTN 750/650 W/O DME
3				1		31	E2006-11-3-013	WIRING DIAGRAM, GTN 750 XI & 650 XI	DUAL GTN 750 W/O DME
3					1	30	E2006-11-3-011	WIRING DIAGRAM, GTN 750 XI & 650 XI	GTN 750/650 W/ DME
3		1	1			29	E2006-11-1-015	WIRING DIAGRAM, GARMIN G500TXI	GTN 750/650 W/O DME
-027 QTY	-025 QTY	-023 QTY	-021 QTY	-019 QTY	ITEM	PART NUMBER	DESCRIPTION	REMARKS	

BILL OF MATERIALS

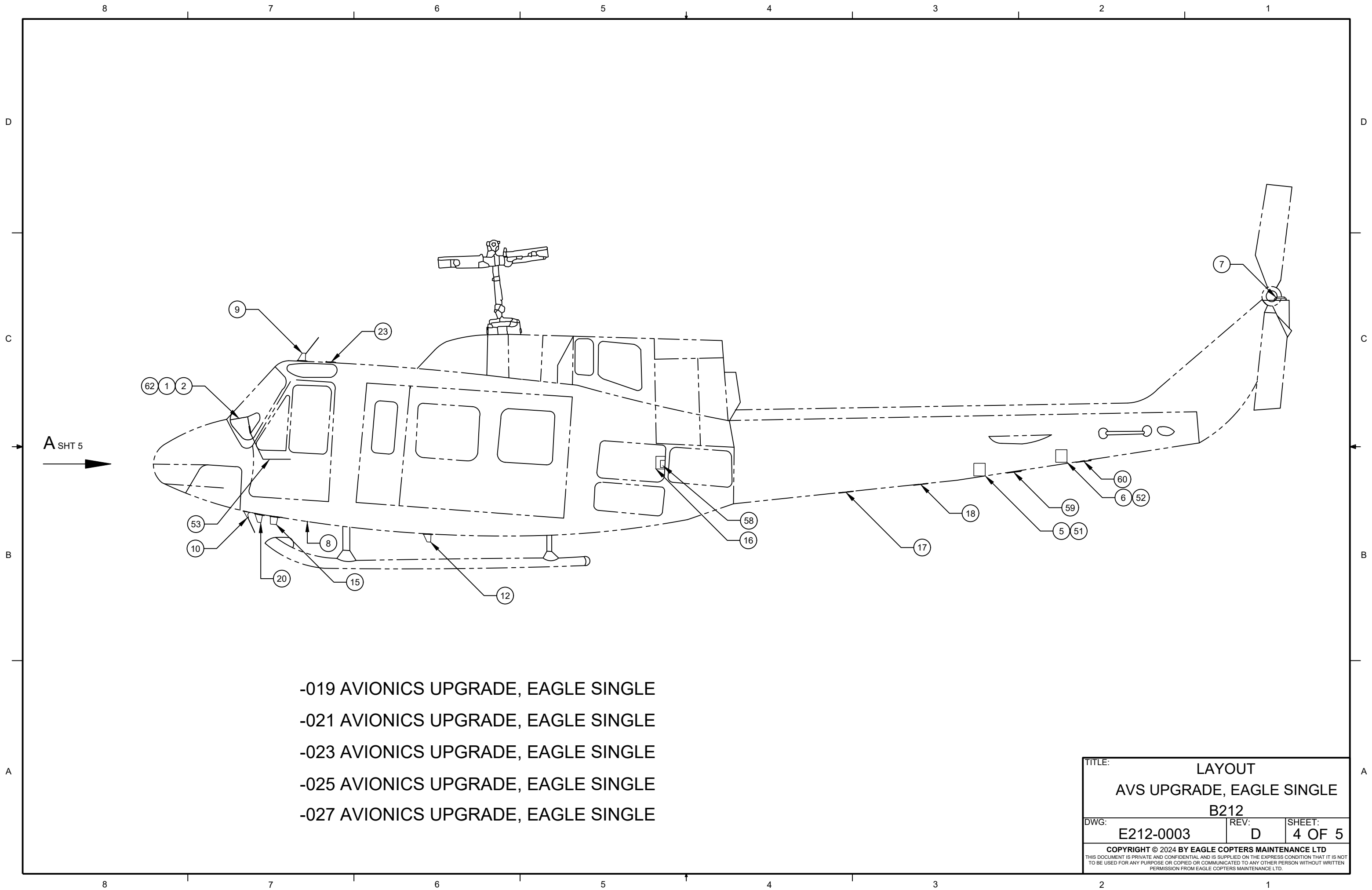
TITLE: LAYOUT		
AVS UPGRADE, EAGLE SINGLE		
B212		
DWG: E212-0003	REV: D	SHEET: 2 OF 5

COPYRIGHT © 2024 BY EAGLE COPTERS MAINTENANCE LTD
THIS DOCUMENT IS PRIVATE AND CONFIDENTIAL AND IS SUPPLIED ON THE EXPRESS CONDITION THAT IT IS NOT TO BE USED FOR ANY PURPOSE OR COPIED OR COMMUNICATED TO ANY OTHER PERSON WITHOUT WRITTEN PERMISSION FROM EAGLE COPTERS MAINTENANCE LTD.



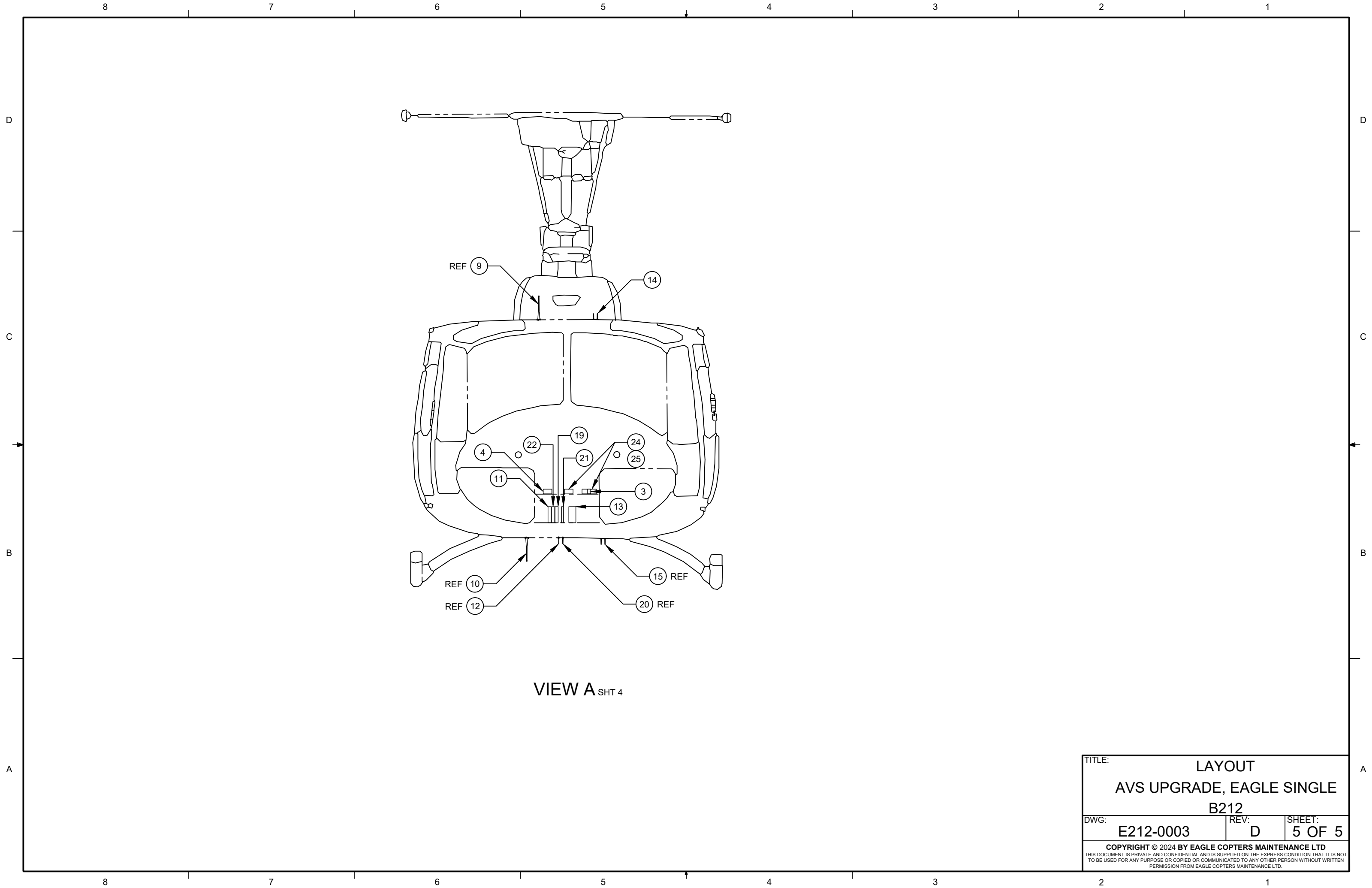
5	3			A/R	A/R	A/R	69	TBN-E212-006-013	RAD ALT 5G FLTR & ANT UPGRADE	AFT ANT LCTN
5	3			A/R	A/R	A/R	68	TBN-E212-006-011	RAD ALT 5G FLTR UPGRADE	FWD ANT LCTN
		-027 QTY	-025 QTY	-023 QTY	-021 QTY	-019 QTY	ITEM	PART NUMBER	DESCRIPTION	REMARKS
4	OPTIONAL INSTALLATIONS									

TITLE:		
LAYOUT AVS UPGRADE, EAGLE SINGLE B212		
DWG:	REV:	SHEET:
E212-0003	D	3 OF 5
<small>COPYRIGHT © 2024 BY EAGLE COPTERS MAINTENANCE LTD THIS DOCUMENT IS PRIVATE AND CONFIDENTIAL AND IS SUPPLIED ON THE EXPRESS CONDITION THAT IT IS NOT TO BE USED FOR ANY PURPOSE OR COPIED OR COMMUNICATED TO ANY OTHER PERSON WITHOUT WRITTEN PERMISSION FROM EAGLE COPTERS MAINTENANCE LTD.</small>		



- 019 AVIONICS UPGRADE, EAGLE SINGLE
- 021 AVIONICS UPGRADE, EAGLE SINGLE
- 023 AVIONICS UPGRADE, EAGLE SINGLE
- 025 AVIONICS UPGRADE, EAGLE SINGLE
- 027 AVIONICS UPGRADE, EAGLE SINGLE

TITLE: LAYOUT		
AVS UPGRADE, EAGLE SINGLE		
B212		
DWG: E212-0003	REV: D	SHEET: 4 OF 5
<small>COPYRIGHT © 2024 BY EAGLE COPTERS MAINTENANCE LTD THIS DOCUMENT IS PRIVATE AND CONFIDENTIAL AND IS SUPPLIED ON THE EXPRESS CONDITION THAT IT IS NOT TO BE USED FOR ANY PURPOSE OR COPIED OR COMMUNICATED TO ANY OTHER PERSON WITHOUT WRITTEN PERMISSION FROM EAGLE COPTERS MAINTENANCE LTD.</small>		



VIEW A_{SHT 4}

TITLE:		
LAYOUT AVS UPGRADE, EAGLE SINGLE B212		
DWG:	REV:	SHEET:
E212-0003	D	5 OF 5
<small>COPYRIGHT © 2024 BY EAGLE COPTERS MAINTENANCE LTD THIS DOCUMENT IS PRIVATE AND CONFIDENTIAL AND IS SUPPLIED ON THE EXPRESS CONDITION THAT IT IS NOT TO BE USED FOR ANY PURPOSE OR COPIED OR COMMUNICATED TO ANY OTHER PERSON WITHOUT WRITTEN PERMISSION FROM EAGLE COPTERS MAINTENANCE LTD.</small>		